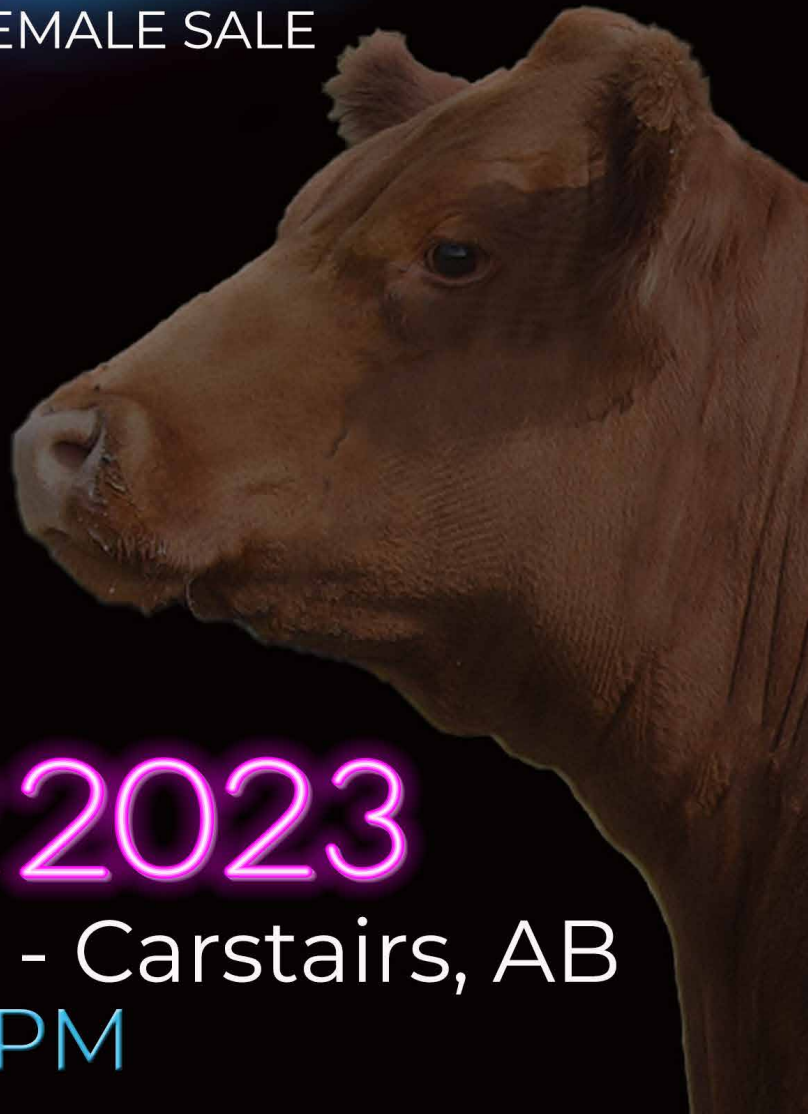


2023 EDITION

MADER
Ranches

Ladies
NIGHT

BRED FEMALE SALE



10.19.2023

On The Ranch - Carstairs, AB

5 PM

WELCOME 2023 EDITION

Welcome to our 2023 Edition of Mader Ranches Ladies Night! As I sit down to write this, most of the cereal harvest is starting across prairie provinces, with yields and prices holding solid and the weather allowing people to get straw baled up, cattle shuffled onto fall pasture, calves sold, and get caught up on the "To Do Lists!" The optimism in the cattle market is very rewarding seeing high prices on cull cows and bulls, a very strong yearling market, and calf prices that are setting records! Although a drier start to the summer, late moisture has helped the feed inventory replenish in many areas, with average hay yields, but some decent to strong greenfeed and silage crops that will help hugely. It is rewarding to see farmers and ranchers getting compensated for their efforts and hard work, it is too bad we are so reliant of what mother nature gives us for weather, but some way or another, we always pull through!

We have selected a group of our very best bred females for this sale, offering a broad range of genetic combinations and matings, while still trying to focus our program being built around dominant and lucrative cow families. With breeding over 90 heifers this spring, this is what allows us to offer such an elite group, as we had a great selection to retain and sell from. The embryo matings we are offering are amongst our most exciting breeding pieces we have ever offered, and matings that we have confidently implanted ourselves already, and ones we feel will be very profitable to the respected buyers. This will be the largest selection of embryos ever offered on the legendary IRCC Darlin' 613D female, a cow that has made a huge impact on the breed in a short time, including being the dam of Mader Walk The Line 92J, the \$280,000 herdbull, who is going to have a huge impact on our program and the breed for years to come. The use of AI and embryo work throughout our program has allowed us to build a cowherd based around top donors that excel in production, foot and udder quality, and easy fleshing ability. We incorporate sires that have proven themselves within the industry, but are also not afraid to try something new that has the genetic potential and proven history in their blood!

An October sale works so well for our program, and we believe it is beneficial for our customer when it comes to trucking of these live cattle well in advance to calving, it allows most of the growth of these females to be done on green grass forage, it gives a more realistic picture of what these heifers are in their working clothes and to what they are going to mature into, and is more beneficial for their longevity in the long run. We do not pamper or cowherd, and these females are expected to lay down and give you a live calf, will thrive off of green grass and stubble, and are genetically bred to be easy fleshing and problem free cattle even within the harshest of winters we can see if this country. These females are included in our total herd health program receiving the appropriate vaccines such as Bovashield Gold, 8 way, and Ivomec. They have all been vaccinated 2 times with the following, and our fall vaccinations on bred females will not happen until early November, so you are able to get them home shortly after the sale and get them onto your own protocols. All have been ultrasounded and the most accurate breeding dates we can offer, are noted within their individual lots.

As you analyze the offering, you will see we didn't hold anything back! From opportunities such as our prestigious Lot 1 embryo lot, opening up the chance to be a part of one of the most talked about cows in the industry right now, through what we feel are bred heifers that will "add" to your program, not just multiply your numbers. These females were hand selected based on phenotype, their genetic makeup, and their exciting matings! We take pride in breeding these heifers to top AI sires, but we also feel the importance to walk heifer bulls with superb pedigrees and cow families backing them! The Rebel Yell bull is backed by \$25,000 Reload dam purchased through FNL, and the Kiss This bull is backed by the Violet 49H donor, a cow that demanded \$92,000 for half interest in our past Ladies Night Sale!

We hope we can host you, at the ranch, Thursday, October 19th! Cattle are available for viewing anytime that day or the day before, the sale will start at 5pm with a steak supper to follow. We also ask that if you are able to attend the sale, that you plan to stick around afterwards for refreshments and live music, to help us celebrate a few special anniversaries this year, Randy and Ronda at 46 years, and Ryley and Jill at 16 years! If you cannot make the sale, please feel free to tour the farm ahead of time, make arrangements to bid online, or please contact anyone of us from Mader Ranches or our trusted sale staff at Bohrsen Marketing to assist you with questions or bidding. This night we celebrate the Ladies of our operation, please make sure to bring the ladies of yours!

Sincerely,

Ryley

THE PEOPLE OF MADER RANCHES



RYLEY & JILL

STELLA & HAWKIN MADER

maderranches@gmail.com

Ryley's Cell: 403.807.8140

Jill's Cell: 403.990.9187

Ryley has been a part of the family operation from a young child and was joined by Jill in 2007. Everyone is hands on in the business activities and look forward to many years in the cattle industry.



RANDY & RONDA MADER

rrmader13@gmail.com

Randy's Cell: 403.660.1123

Randy & Ronda started Mader Ranches in 1974. They have worked hard in the cattle industry for 49 years and see all aspects of the operation from day-to-day, management & mentorship.



CONNER JOHNSTONE

Conner joined the team this summer. He will manage the feed wagon, mechanics, and assists with daily cattle tasks and that will make him a huge asset to our operation.

SALE DAY INFORMATION

SCHEDULE

October 18th Viewing All Day
October 19th Viewing All Day
5 PM : SALE TIME

Followed by Steak Supper & Live Music

SALE STAFF

Auctioneer: Ryan Dorran 403.507.6483
Ringmen: Mark Stock 403.357.8104
Rod Mcleod 403.540.7986

SALE MANAGEMENT

Bohrson Marketing Services Ltd.

Scott Bohrson 403.370.3010
Taylor Richards 306.821.4169
Jaxon Payne 306.830.0456
Cody Haney 403.845.8806
Riley Bohrson 639.213.7777

www.bohrson.com



ACCOMODATIONS

Ramada - Olds 403.507.8349
Best Western Inn - Olds 403.556.5900
Didsbury Country Inn - Didsbury 403.335.8088
Golden West Motor Inn - Carstairs 403.337.3333

INCENTIVES

- **Payment due 1/2 down Sale Day & 1/2 Due Dec 31st.**
To allow customers to sell their own products before full payment is due.

- **5 % Junior Discount - 21 years of age or under**

WATCH, BID & BUY ONLINE

Internet Bidding Available

DLMS
www.dlms.ca

For more information call DLMS:
Mark Shologan 780.699.5082 or
DLMS Purebred Team 780.991.3025

ON OFFER

29 Red & Black Simmental Bred Females
12 Embryos

SUPPLEMENTARY INFO

A supplementary sheet will be available on sale day.
This will include any updated information.

PHOTOS & VIDEOS

- Taken in house by Mader Ranches
- Can be viewed online at www.maderranches.com
- Pictures taken Aug 2023 & videos taken Oct 2023

TERMS & CONDITIONS

Cattle will sell under the standard terms and conditions put forward from the Canadian Simmental Association and from Mader Ranches. These are available upon request.

DISCLAIMER

While every effort has been taken to ensure that all details are correct, the descriptions contained in this catalogue are often opinion only. We cannot be responsible for the consequences of any actions taken or not taken as a result of these opinions.

HOW TO FIND US?

Directions From Carstairs:

Go North on Main Street (10th Ave) out of town, Road automatically turns west(Twp Rd 303).
Go West 15 kms to Range Road 32.
Turn South. Farm is on your right.

Directions From Hwy 22:

Go East 11 kms on Twp Rd 303 (Carstairs Blind Line) to Range Road 32.

Turn South. Farm is on your right.

FIND US ON GOOGLE MAPS - Mader Ranches



THE MADER RANCHES DIFFERENCE



HAND PICKED HERD

Our genetics are carefully chosen by us and some trusted advisors, and we make all the mating decisions ourselves. We travel around to source only the best animals or frozen genetics, increasingly realizing the value in raising your own breed leaders.



FAMILY OPERATION WITH LONG TIME COMMITMENT

The Mader Family has been in the cattle business for 49 years. We have had 34 bull sales and plan on an extensive future with our 2nd and 3rd generation. We work hard to ensure our customers are happy with their investment. We are committed to helping our customers achieve their goals and back our animals.



HEART OF OUR HERD

We have a large nucleus of foundation females and pride ourselves in the cow families that extend down from that base. These females on offer are picked from 150 replacement heifers. They are the best of the best.



DEPTH OF PEDIGREE

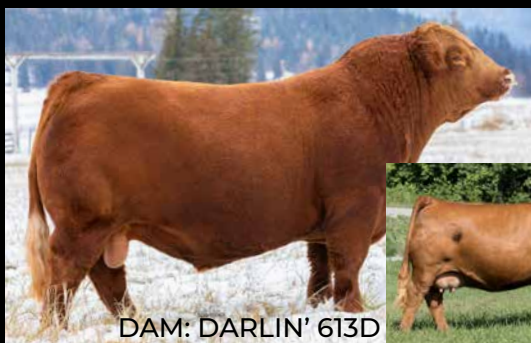
We utilize Embryo Transfer and AI extensively to multiply the consistency in our herd. We find that by reproducing multiple daughters and sons from our donor cows and breed leading sires, we can offer consistency to our customers.



ACCURATE DATA

We have invested into cattle record keeping and management so that all of our data is as accurate as possible. We have our herd on the HerdTrax program as it integrates well with the Total Herd Enrollment with the Canadian Simmental Association. All data is available.

2024 UP & COMING SIRES



MADER WALK THE LINE 92J

NCB COBRA 47Y

17 January 2021 • PTG1358996

SIRE: MADER WALK THIS WAY 224B

Homo Polled

MADER P IRON SUGAR 7X

MR HOC BROKER

DAM: IRCC DARLIN' 613D

DESTINY ODIN SHEA

EPDs						
CE	BW	WW	YW	Milk	MCE	MWW
11.1	1.5	101.2	145.7	29.9	7.9	80.5
% RK	20	15	1	2	40	10 3

Sold to KT Ranches & Canadian Sire at Friday Night Lights 2021 for \$280,000. One of the most widely used Red Simmental sires born right here at Mader Ranches.



MADER NIGHT SHIFT 63K

NGDB STRUCTURE 34D

12 January 2022 • BPG1398065

SIRE: RF SHAKEDOWN 074H

Homo Polled

IPI MS. COWBOY CUT 135D

WHEATLAND HIGH OCTANE169Y

DAM: MADER SUGAR CANE 48C

MADER P IRON SUGAR 7X

EPDs						
CE	BW	WW	YW	Milk	MCE	MWW
6.7	4.4	100.2	140.3	26.2	3.5	76.3
% RK	60	65	1	5	60	60 15

A \$100,000 high seller in our 2023 Bull Sale to Canadian Sire and Sjogren Farms. We walked him in our spring program as well as use him heavily in our AI program.

GREAT BULLS ARE BACKED BY ELITE COWS



DAM: VIOLET 49H

MADER KISS THIS 93K

CCR COWBOY CUT 5048Z

15 January 2022 • BPTG1398400

SIRE: WS PROCLAMATION E202

WS MISS SUGAR C4

Homo Polled, Homo Black

TJSC BOONE PICKENS 46C

EPDs

DAM: MADER VIOLET 49H

LFE BS VIOLET 641A

CE	BW	WW	YW	Milk	MCE	MWW
14.0	0.3	87.6	134.1	28.5	9.2	72.3
% RK	4	10	15	10	45	3 25

A service to "Kiss This" should be very lucrative, he sold for \$18,000 this spring in our sale, and is backed by the curve bending Proclamation sire, and the Mader Violet 49H female that sold for \$92,000 for half interest



DAM: IRON SUGAR 7X

MADER WALK THIS WAY 224B

LFE VIPER 455U

27 July 2014 • BPTG1139930

SIRE: NCB COBRA 47Y

NCB MISS DREAM 22T

Homo Polled

MADER P BLACK IRONMAN 22U

EPDs

DAM: MADER P IRON SUGAR 7X

LFE FAMOUS 632T

CE	BW	WW	YW	Milk	MCE	MWW
11.3	0.6	93.9	144.4	31.8	9.1	78.8
% RK	15	10	3	2	30	4 5

Born and raised at Mader Ranches and a high seller in 2016 to Sunny Valley Simmentals, Walk This Way has gone onto do great things for the Simmental breed.



DAM: SHEILA 82A

MADER SON OF ANARCHY 144H

REMINGTON LOCK N LOAD 54U

6 February 2020 • BPTG1318606

SIRE: TJSC BOONE PICKENS 46C

TJSC KNOCKOUT 121Y

Homo Polled, Homo Black

LFE THE DARK NIGHT 350U

EPDs

DAM: LFE BS SHEILA 82A

LFE BS SHEILA 136T

CE	BW	WW	YW	Milk	MCE	MWW
8.0	3.7	91.9	140.6	16.9	2.3	62.9
% RK	40	50	4	3	100	75 70

A \$50,000 high seller in our 2020 Bull Sale, going to Harvie Crest and Mader Ranches will walk him in our summer program



DAM: ULTRA CAREY 77H

MADER REBEL YELL 7K

CROSSROAD BLACK REBEL 4F

1 January 2022 • PG1424351

SIRE: BLACK GOLD REBEL 175H

BLACK GOLD MS SODA 111F

Homo Polled

R PLUS RELOAD 2006Z

EPDs

DAM: ULTRA 30B CAREY 77H

ULTRA MISS CAREY 30B

CE	BW	WW	YW	Milk	MCE	MWW
9.0	3.4	76.0	114.1	19.8	5.2	57.8
% RK	35	45	55	45	95	35 90

This service sire is cherry red, big hipped, very sound, and is backed by a tremendous Reload daughter that we purchased from Ultra Livestock for \$25,000 at Friday Night Lights 2021.



DAM: FAE 343E

WLB TOP TIER 456G

TNT BOOTLEGGER Z268

21 February 2019 • PG1288193

SIRE: MAR MAC UTAH WHISKY 52E

MAR MAC UTAH'S DREAM 79U

Homo Polled

SUNNY VALLEY FORCE 47Y

EPDs

DAM: WLB 47Y FAE 343E

WLB 756T TRESSIE 3556B

CE	BW	WW	YW	Milk	MCE	MWW
15.0	0.6	69.2	96.0	25.3	7.4	59.9
% RK	2	10	80	90	65	10 85

We bred a couple this way, but the calves we have seen from Top Tier so far are ones that are at the top end of pens! That nice blaze with strong calving ease numbers!



Lot **1A**

DARLIN' X MANDATE

26 January 2021 • LRPS 1044J • BPG1344163 • BW 88

Sire EPD's

EPDs						
CE	BW	WW	YW	Milk	MC	MWW
7.4	3.2	88.4	145.6	21.7	1.9	65.9

Homo Polled, Hetero Black

R PLUS YUMA 9087G

MR HOC BROKER

SIRE: R PLUS MANDATE 1044J

DAM: IRCC DARLIN' 613D

MISS R PLUS 4193B

DESTINY ODIN SHEA

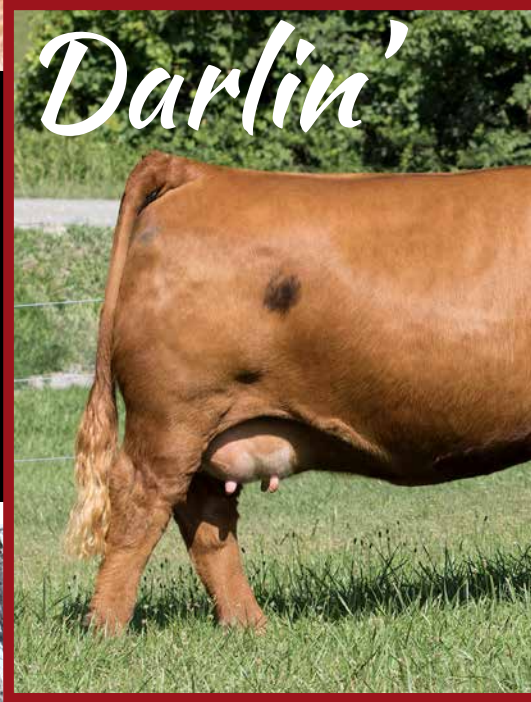
3 EMBRYOS SELLING
 GUARANTEEING 1 PREGNANCY PER 3 IMPLANTS.
 EMBRYOS QUALIFIED FOR CAN, USA, EU, UK, AND AUZ



Son of IRCC Darlin' 613D



Daughter of IRCC Darlin' 613D



Lot **1B**

DARLIN' X NO LIMITS

20 January 2021 • GNR 1112J • BPG1365097 • BW 90

Homo Polled, Hetero Black

Sire EPD's

EPDs						
CE	BW	WW	YW	Milk	MC	MWW
5.6	4.5	100.1	154.0	29.2	-0.3	79.3

R PLUS YUMA 9087G

MR HOC BROKER

SIRE: RF NO LIMITS 1112J

DAM: IRCC DARLIN' 613D

RUST MISS 6217D

DESTINY ODIN SHEA

3 EMBRYOS SELLING
 GUARANTEEING 1 PREGNANCY PER 3 IMPLANTS. EMBRYOS QUALIFIED FOR CAN, USA, EU, UK, AND AUZ



Daughter of IRCC Darlin' 613D



Daughter of IRCC Darlin' 613D



Son of IRCC Darlin' 613D



Daughter of IRCC Darlin' 613D



Lot **1C**

DARLIN' X BETTS

4 January 2018 • SVS 808F • PTC1235797 • BW 93

Sire EPD's

EPDs						
CE	BW	WW	YW	Milk	MC	MWW
8.9	4.8	91.0	135.9	20.3	9.0	65.8

Homo Polled

BGS/BM CAPTAIN SCREAM 63D

MR HOC BROKER

SIRE: SVS BETTS 808F

DAM: IRCC DARLIN' 613D

WFL RED SAGE 506C

DESTINY ODIN SHEA

3 EMBRYOS SELLING
 GUARANTEEING 1 PREGNANCY PER 3 IMPLANTS.
 EMBRYOS QUALIFIED FOR CAN, USA, EU, UK, AND AUZ



Daughter of IRCC Darlin' 613D



Daughter of IRCC Darlin' 613D



Lot **1D**

DARLIN' X BOND

15 February 2019 • TLAS 973G • PG1275495 • BW 96

Homo Polled

Sire EPD's

EPDs						
CE	BW	WW	YW	Milk	MC	MWW
12.4	0.8	77.5	123.0	26.1	8.0	64.9

MADER WALK THIS WAY 224B

MR HOC BROKER

SIRE: SVS BOND 973G

DAM: IRCC DARLIN' 613D

CMS SODA POP 410B

DESTINY ODIN SHEA

3 EMBRYOS SELLING
 GUARANTEEING 1 PREGNANCY PER 3 IMPLANTS. EMBRYOS QUALIFIED FOR CAN, USA, EU, UK, AND AUZ



Lot 2

MADER COVER GIRL 33K



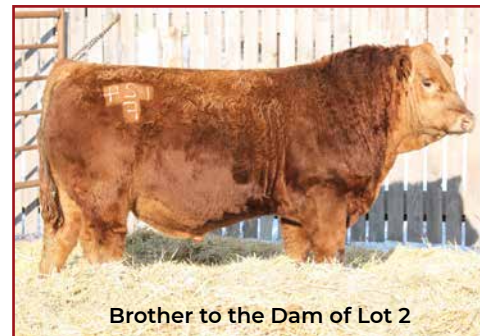
Sire of Lot 2



Dam of Lot 2



Grandsire of Lot 2



Brother to the Dam of Lot 2

6 January 2022 • MDR 33K • PG1411250 • BW 80

Homo Polled

EPDs						
CE	BW	WW	YW	Milk	MC	MWW
7.7	4.3	80.7	124.1	22.9	4.7	63.3

SIRE: MADER MILESTONE 69H
SVS BETTS 808F
WHS MISS HANNAH 69B

DAM: MADER COVER GIRL 22G
RUST RIO GRANDE 7022 ET
MADER COVER GIRL 130Z

- AI BRED to WLB TOP TIER 456G ON MARCH 22. DUE JANUARY 1ST

- The lead off heifer very deserving of this spot in the catalogue
- Sired by a lead of Betts son we sold for \$22,000 to Downhill Simmentals, backed by one of our top producing cows
- Betts, Crosby, and Rio Grande are all sires backed by tremendous donor dams and producing brood cows
- This female is hard to fault, with her sound feet and legs, terrific udder attachment, easy fleshing ability, while still maintaining lots of neck extension and femininity
- She is halterbroke as well, as our niece Harper, did a great job showcasing her this past spring



Lot **3**

MADER TARA 28K



Sire of Lot 3



Dam of Lot 3



Paternal Granddam



Maternal Grandsire of Lot 3

6 January 2022 • MDR 28K • PG1411247 • BW 84

Homo Polled

EPDs						
CE	BW	WW	YW	Milk	MC	MWW
6.4	3.5	98.4	147.8	26.3	4.3	75.5

SIRE: MADER WALK THIS WAY 224B
MADER P IRON SUGAR 7X

DAM: CROWE TARA 35G
MAF CF TARA 272C

- AI BRED to WLB TOP TIER 456G ON MARCH 27. DUE JANUARY 6TH

- A very attractive heifer through her skull, front third, and overall appearance
- Walk this Way has proven himself to produce sound, functional cattle, that are at the forefront of many herds
- Her Baileys One of a Kind dam has turned into a great young cow, as a first calver, she weaned off a bull weighing over 900lbs
- A very unique genetic combination and a phenotype that is sought after in this young prospect
- A red baldie calf out of Top Tier would be icing on the cake



Lot **4**

MADER SIERRA 810J

8 June 2021 • MDR 810J • PG1393918 • BW 82

EPDs

CE	BW	WW	YW	Milk	MC	MWW
7.9	4.3	84.0	122.6	22.4	5.8	64.4

Homo Polled

BGS/BM CAPTAIN SCREAM 63D

MCINTOSH BIG DOG 29B

SIRE: SVS BETTS 808F

DAM: MCINTOSH SIERRA 6F

WFL RED SAGE 506C

LWC MISS RED FORCE 176Y

- AI BRED to WLB TOP TIER 456G ON MARCH 27. DUE JANUARY 6TH

-Absolute POWER is what sums this heifer up as a package

-The extra muscle expression, the softness through her middle third, the added frame and length, and a big foot are just a few of her assets

-We purchased her dam from McIntosh Livestock as their lead off heifer out of Border City a few years back and she has turned into a tremendous female with great udder and a nice dark red colour she passes on

-She carries an early service to Top Tier to top it off

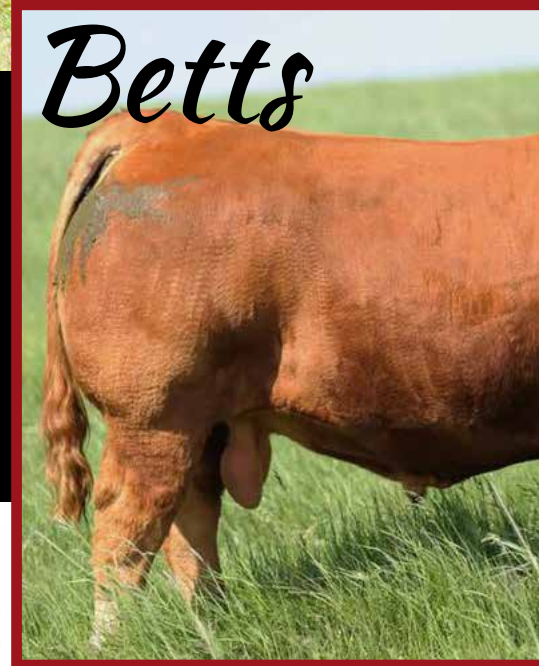


Dam of Lot 4



Betts Daughter

Betts



Lot **5**

MADER LADY 827J

15 June 2021 • MDR 827J • PG1393929 • BW 81

Homo Polled

EPDs

CE	BW	WW	YW	Milk	MC	MWW
8.4	2.7	77.9	112.4	23.4	7.1	62.4

BGS/BM CAPTAIN SCREAM 63D

CDI/PLCC DR. PHIL 145U

SIRE: SVS BETTS 808F

DAM: MADER LADY MIST 132Y

WFL RED SAGE 506C

ERIXON LADY 202S



Dam of Lot 5



Maternal Sister to Lot 5

-BRED TO MADER REBEL YELL 7K ON MAY 14. DUE FEBRUARY 23RD

-Dark cherry red in colour, very balanced in her makeup, a beautiful udder suspension and teat size, and whole lot of performance

-The Betts cattle express so much easy doing ability, and when combined with the "Lady" cow family, we add in a lot of maternal including udder quality, foot quality, and a feminine design with adequate body. Her dam, Lady Mist, has been successfully flushed over the years, creating us many high selling offspring



MADER BITTERSWEET 824J

15 June 2021 • MDR 824J • PG1393927 • BW 82

EPDs

CE	BW	WW	YW	Milk	MC	MWW
7.0	4.2	78.0	117.5	17.9	4.5	56.9

Homo Polled

BGS/BM CAPTAIN SCREAM 63D

WFL TROJAN 63C

SIRE: SVS BETTS 808F

DAM: MADER BITTERSWEET 89E

WFL RED SAGE 506C

C-K ZOOEY 36Y

-BRED TO MADER REBEL YELL 7K ON APRIL 10. DUE JANUARY 20TH

- Certainly a pen favorite for her balanced body type, her athletic design, and her attractiveness and style
- She carries a great udder design like her dam, is very docile, and will make a real matron female
- This female was preg checked more favourable to the next cycle versus her AI date, but mating her to the dark red Rebel bull should really pay off
- She will be easy to find come sale day



MADER PRICELESS 825J

15 June 2021 • MDR 825J • PG1393928 • BW 81

Homo Polled

EPDs

CE	BW	WW	YW	Milk	MC	MWW
8.2	3.9	89.7	136.7	24.2	6.6	69.1

BGS/BM CAPTAIN SCREAM 63D

MADER WALK THIS WAY 224B

SIRE: SVS BETTS 808F

DAM: MADER PRICELESS 107F

WFL RED SAGE 506C

MADER PRICELESS 220C

- AI BRED to WLB TOP TIER 456G ON MARCH 27. DUE JANUARY 6TH

- Here is bigger framed, longer spined typed heifer that is still very proportionate in terms of the substance and volume that she carries
- These extra age heifers are a dream when it comes to calving, with their extra pelvic room, their heavier milking ability, and their ability to maintain body score and breed back early again. Stacking Betts together with Walk This Way has really put the best of both worlds together, combining power with style



Lot 8

MADER PAYTON 70K

12 January 2022 • MDR 70K • PTG1398089 • BW 92

EPDs

CE	BW	WW	YW	Milk	MC	MWW
6.4	5.1	95.4	146.1	21.3	2.7	69.0

Homo Polled

R PLUS VENOM 4006B

NCB COBRA 47Y

SIRE: MRL PLAYMAKER 36G

DAM: SUNNY VALLEY PAYTON 77E

MRL MISS 4335B

SUNNY VALLEY MS 84C

- AI BRED to WLB TOP TIER 456G ON MARCH 25. DUE JANUARY 4TH
- Payton 70K would be another personal favorite
- She is blood red in colour, very extended through her front third, has lots of depth and spring of rib, and is setting up a very nice udder
- The Peyton donor female has been a great cow for us, she had a great show career, her first daughter sold for \$21,000 through FNL, and she continues to raise us the heat
- I believe this female to be donor quality, and calving early to Top Tier should allow a quick ROI



Sire of Lot 8-11



Payton w/ Calf 2019

Payton



Lot 9

MADER PAYTON 124K

22 January 2022 • MDR 124K • PTG1398098 • BW 83

EPDs

CE	BW	WW	YW	Milk	MC	MWW
6.4	4.7	91.0	139.9	21.3	2.7	66.8

Homo Polled



Payton Son



Payton Daughter

-Lot 9 and 11 are almost identical in their phenotype
 -They carry lots of spring of rib, are wide in their chest floor, very feminine fronted, both have ideal spread and length to their teats, and should be pound producers

-BRED TO MADER REBEL YELL 7K ON MAY 10. DUE FEBRUARY 19TH



Lot **10**



Payton Son



Payton w/ Calf 2019

MADER PAYTON 94K

15 January 2022 • MDR 94K • PTG1398093 • BW 82

EPDs

CE	BW	WW	YW	Milk	MC	MWW
6.4	4.8	91.7	140.9	21.3	2.7	67.2

Homo Polled

R PLUS VENOM 4006B

NCB COBRA 47Y

SIRE: MRL PLAYMAKER 36G

DAM: SUNNY VALLEY PAYTON 77E

MRL MISS 4335B

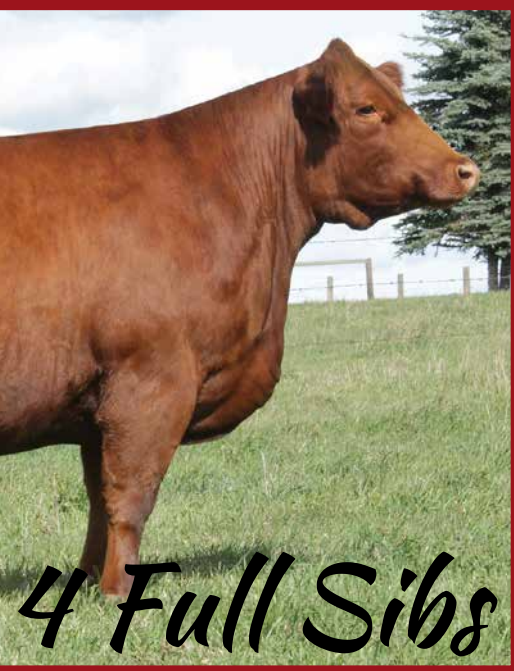
SUNNY VALLEY MS 84C

-BRED TO MADER REBEL YELL 7K ON MAY 10. DUE FEBRUARY 19TH

-Very similar in type and design as the lot 8 female, with a great look about her, very sound from ground up, and a great body type and colour

-This female resembles what her dam looked like at a similar age, and I feel she will make a great producer

-Bred to the Rebel Yell bull for an early Feb calf, he will add more muscle expression and lower rib shape, while not sacrificing the sleek design she upholds



4 Full Sibs



Lot **11**

MADER PAYTON 125K

Homo Polled



Payton Daughter - Jewel



Payton Daughter - Jewel



Payton Daughter - Jewel

22 January 2022 • MDR 125K • PTG1398099 • BW 82

EPDs

CE	BW	WW	YW	Milk	MC	MWW
6.4	4.7	91.0	139.9	21.3	2.7	66.8

-BRED TO MADER REBEL YELL 7K ON MAY 14. DUE FEBRUARY 23RD

-Backed by a donor cow that has proven herself to be a top producer for both sons and daughters

-These females are doubled up on Cobra genetics with Venom being a son, and we have to admit, that any female with Cobra in her on the farm, are some of our very best

-Lot 9 & 11 are bred for mid February to the Rebel Yell sire, who is backed by the \$25,000 Ultra Carey 77H donor



Lot **12**

MADER GWEN 101K

16 January 2022 • MDR 101K • PTG1398094 • BW 79

EPDs

CE	BW	WW	YW	Milk	MC	MWW
6.2	3.7	72.8	109.5	28.5	-0.4	64.9

Homo Polled

LFE BLOCKBUSTER 3011C

SVS BROOKS 669D

SIRE: LFE HALL PASS 851G

DAM: MAVV GWEN 54G

LFE RS COCOA 658C

PARVIEW'S LADY KYRA 264Z

-BRED TO MADER REBEL YELL 7K ON APRIL 20. DUE JANUARY 30TH

- A lead off Hall Pass daughter stemming from a superior SVS Brooks donor female
- She is an embryo calf that expresses a pile of quality such as her capacious body, her near perfect udder attachment, her leg and foot quality, and her overall balance
- Her dam has quickly become one of our front pasture females after purchasing her out of FNL a few years back
- Possibilities are endless with greats in her pedigree such as Blockbuster and Brooks

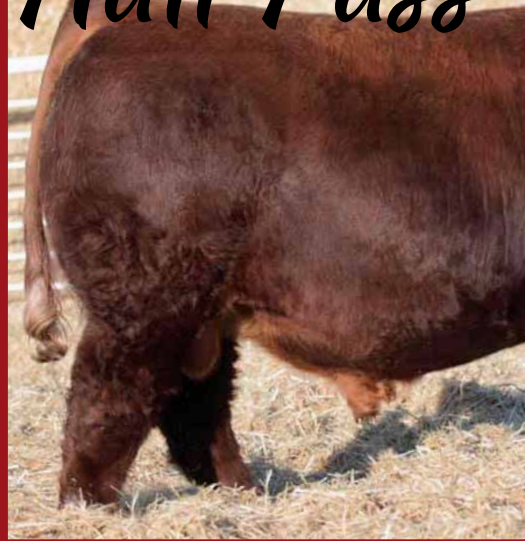


Dam of Lot 12



Maternal Brother of Lot 12

Hall Pass



Lot **13**

MADER LADY 64K

12 January 2022 • MDR 64K • PG1411259 • BW 93

Homo Polled

EPDs

CE	BW	WW	YW	Milk	MC	MWW
3.9	5.2	75.0	114.6	23.9	1.7	61.4

LFE BLOCKBUSTER 3011C

MRC INVESTOR 60B

SIRE: LFE HALL PASS 851G

DAM: ERIXON LADY 121D

LFE RS COCOA 658C

ERIXDON LADY 8A



Dam of Lot 13



Maternal Sister of Lot 13

- AI BRED to WLB TOP TIER 456G ON MARCH 26. DUE JANUARY 5TH

- A natural daughter out of the \$20,000 Erixon Lady 121D donor. We purchased the dam out of Simmsational a few years back as the lead off red bred heifer, the search was for power, and that exactly what she has done for us. Her sons have easily averaged over \$9000 over the years
- This daughter has many of her dams characteristics including extra frame and length, power through that mid section and strength over her top



Lot **14**



Dam of Lot 14



Maternal Brother of Lot 14

MADER TWINKLE 73K

12 January 2022 • MDR 73K • PG1411260 • BW 80

EPDs

CE	BW	WW	YW	Milk	MC	MWW
7.0	3.8	76.7	117.2	20.8	1.2	59.2

Homo Polled

LFE BLOCKBUSTER 3011C

WFL TROJAN 63C

SIRE: LFE HALL PASS 851G

DAM: MADER TWINKLE 88E

LFE RS COCOA 658C

CROSSROAD TWINKLE 594T

- AI BRED to WLB TOP TIER 456G ON APRIL 8. DUE JANUARY 18TH

- An easy heifer to appreciate with her depth of body and flank, her cherry red colour, and her athletic ability
- Very nice udder coming down, very attractive through her skull and neck, and bred way along to Top Tier
- Hall Pass was a \$100,000 high seller for Lewis a few years back and we were fortunate enough to get in on a semen pack
- The bulls were features this past spring, and most envied for their blood red colour and easy fleshing ability
- If she turns out anything like her dam, she will be a front pasture female for years to come



Lot **15**

MADER LADY 71K

12 January 2022 • MDR 71K • PTC1398090 • BW 78

Homo Polled

EPDs

CE	BW	WW	YW	Milk	MC	MWW
8.4	1.9	69.3	105.7	26.8	4.8	61.5

LFE BLOCKBUSTER 3011C

NCB COBRA 47Y

SIRE: LFE HALL PASS 851G

DAM: MADER LADY 50G

LFE RS COCOA 658C

ERIXON LADY 202S

- AI BRED to WLB TOP TIER 456G ON MARCH 26. DUE JANUARY 5TH

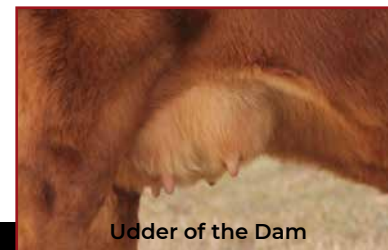
- A female that will be found by many, for her depth of flank and great udder, the capacity she carries all the way through, and her quiet nature
- Her dam, Lady 50G, was the past high seller in Ladies Night, edition 1, to Ultra Livestock and JK Fraser for \$17,000
- Her first year in production, she was National Champion female at CWA, making top 10 in the supreme and her first son sold for \$38,000, lots of future in this female



Maternal Brother of Lot 15

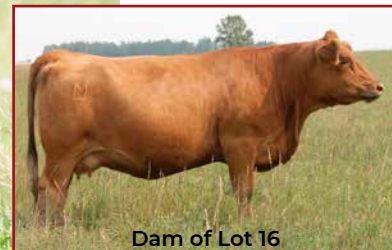


Dam of Lot 15



Udder of the Dam

Lot **16**



Dam of Lot 16



Granddam - 505C

MADER SADIE 131K

25 January 2022 • MDR 131K • PG1411274 • BW 84

Homo Polled

EPDs

CE	BW	WW	YW	Milk	MC	MWW
4.6	4.7	73.9	113.3	18.3	-0.1	55.3

LFE BLOCKBUSTER 3011C

WFL WESTCOTT 24C

SIRE: LFE HALL PASS 851G

DAM: MADER SADIE 71G

LFE RS COCOA 658C

RUST MISS SADIE 505C

-BRED TO MADER REBEL YELL 7K ON APRIL 15. DUE JANUARY 25TH

-A high performance oriented heifer with legends such as Blockbuster, Westcott, and Captain Morgan in her lineage

-Her dam a great uddered, big volumed young cow who has lots of future here. She is out of Rust Sadie 505C donor, a Morgan daughter, had a big influence here, having many progeny as high sellers in both the bull and female sale

Lot **17**



Universal - Maternal Brother



Maternal Sister

MADER HEATHER 133K

25 January 2022 • MDR 133K • PG1411275 • BW 85

Homo Polled

EPDs

CE	BW	WW	YW	Milk	MC	MWW
5.4	3.8	69.9	109.0	25.6	0.9	60.6

LFE BLOCKBUSTER 3011C

MUIRHEADS KOSMO 157R

SIRE: LFE HALL PASS 851G

DAM: MADER HEATHER 158X

LFE RS COCOA 658C

LFE RS DAKOTA COAL 73R

-BRED TO MADER REBEL YELL 7K ON MAY 14. DUE FEBRUARY 23RD

-A maternal brother to this female, Mader Universal, was a past \$19,000 high selling bull for us, and a bull we have been fortunate enough to use a bit in our herd throwing loads of performance. Backed by the Heather 158X cow was very influential, weaning off heavy weights right up until 13 years of age

-This heifer is smooth made, very sound structured, and dropping a nice udder



Lot **18**

MADER SHEILA 814J



Dam of Lot 18



Sire of Lot 18



Dynasty Son



Dynasty Daughter



LFE BS Sheila 82A

9 June 2021 • MDR 814J • BPG1393920 • BW 84

Homo Polled, Homo Black

EPDs						
CE	BW	WW	YW	Milk	MC	MWW
6.3	4.2	83.7	120.4	24.1	4.9	66.0

RF CAPACITY 742E

TNGL GRAND FORTUNE Z467

SIRE: SVS DYNASTY 915G

DAM: MADER SHEILA 54F

WFL RED SAGE 506C

LFE BS SHEILA 82A

-BRED TO MADER KISS THIS 93K ON APRIL 18. DUE JANUARY 28TH

-A feature black with loads of body dimension and mass

-She is so stout through her middle third, has nice extension through her neck, beautiful teats and udder development dropping, and will be a tank of a momma cow

-Her early service to "Kiss This" should be very lucrative, he sold for \$18,000 this spring in our sale, and is backed by the curve bending Proclamation sire, and the Mader Violet 49H female that sold for \$92,000 for half interest

-The Sheila cow needs no introduction, she has proven herself time and time again, and we are pleased her daughters continue to the same

Lot **19**



IPU Black Cinch 95G



LFE Heavy Hitter 352C

MADER OPAL 813J

Homo Polled, Homo Black

9 June 2021 • MDR 813J • BPG1393919 • BW 79

EPDs

CE	BW	WW	YW	Milk	MC	MWW
4.5	5.3	85.1	129.9	24.0	2.5	66.6

SPRINGCREEK LINER 56U

LFE HEAVY HITTER 352C

SIRE: IPU BLACK CINCH 95G

DAM: MADER OPAL 91F

TRI-R MS BLAKE 33B

MADER OPAL 28C

-BRED TO MADER WALK THIS WAY 224B ON MARCH 21. DUE JANUARY 1ST

-The stretch and power put into this package is quite remarkable

-Sired by the \$50,000 IPU Black Cinch sire, and out of a real powerful Heavy Hitter daughter

-The Opals are still among our favorite and best producing cows, maintaining great feet and udders

Lot **20**



CG Black Opal 652S



Maternal Brother of Lot 19

MADER OPAL 828J

Homo Polled, Homo Black

16 June 2021 • MDR 828J • BPG1393930 • BW 85

EPDs

CE	BW	WW	YW	Milk	MC	MWW
6.3	4.7	81.7	119.5	29.4	4.7	70.3

SPRINGCREEK LINER 56U

SS EBONYS INTUITION 802

SIRE: IPU BLACK CINCH 95G

DAM: MADER OPAL 126Z

TRI-R MS BLAKE 33B

CG BLACK OPAL 652S

-BRED TO MADER KISS THIS 93K ON MAY 10. DUE FEBRUARY 19TH

-Another strong Cinch heifer with extra growth and performance. She will make her new owner quick return on investment

-Her Opal dam is a beautiful cow to analyze, and the way the udder is dropping on this girl, I expect she will be the same

-You combine the Opal cow family to Violet family, with her mating to Kiss This, this years high selling heifer bull by Proclamation and the \$92,000 Violet 49H donor

Lot **21**



Dam of 2020 calf at side



Maternal Brother of Lot 21

MADER VEGAS 21K

3 January 2022 • MDR 21K • BPG1403693 • BW 85

Homo Polled, Hetero Black

EPDs						
CE	BW	WW	YW	Milk	MC	MWW
9.2	2.6	75.2	108.8	19.6	2.8	57.2

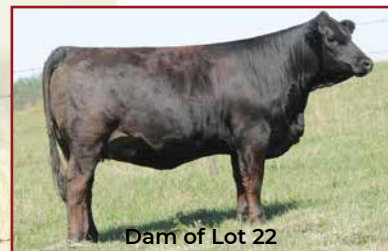
SIRE: TJSC BOONE PICKENS 46C
MADER SON OF ANARCHY 144H
LFE BS SHEILA 82A

DAM: LFE BS LEWIS 322U
MADER KEEPSAKE 31A
ULTRA MS KEEPSAKE 24Y

-BRED TO MADER WALK THIS WAY 224B ON MARCH 21. DUE JANUARY 1ST

- A real sweetheart heifer here with a great disposition and a real nice look to her. She is very sound made, very nice in her lines.
- The \$50,000 Son of Anarchy bull has impressed us so much with his birth to weaning growth on his progeny
- Her dam has been a no miss cow, always bringing in big calves that have extra volume and rib shape like her

Lot **22**



Dam of Lot 22



Sire of Lot 21 & 22

MADER OPAL 6K

1 January 2022 • MDR 6K • BPG1411241 • BW 80

Homo Polled, Homo Black

EPDs						
CE	BW	WW	YW	Milk	MC	MWW
9.3	2.9	87.6	129.5	19.2	4.6	63.0

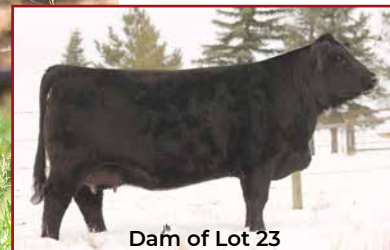
SIRE: TJSC BOONE PICKENS 46C
MADER SON OF ANARCHY 144H
LFE BS SHEILA 82A

DAM: LCDR WITNESS 541C
MADER OPAL 127H
MADER OPAL 217C

-BRED TO MADER KISS THIS 93K ON MAY 19. DUE FEBRUARY 28TH

- Another very well balanced daughter out of Anarchy and a beauty of a Witness daughter
- The udder quality and production is so good on these Opals that we have over 40 daughters and granddaughters in the herd
- This female is nice in her front end, carries ample body capacity, setting up a great udder, and is very true on her skeleton

Lot **23**



Dam of Lot 23



Maternal Sister of Lot 23

MADER FLIRT 142K

28 January 2022 • MDR 142K • BPG1411278 • BW 85

Homo Polled, Hetero Black

EPDs						
CE	BW	WW	YW	Milk	MC	MWW
8.3	3.1	84.2	140.6	20.8	2.7	62.9

SIRE: LFE THE RIDDLER 323B
MADER THE NATIONAL 43E
LFE BS VIOLET 641A

DAM: SVS CAPTAIN MORGAN 11Z
RF CERTAINLY FLIRTIN 525C
RF CERTAINLY FLIRTIN 202Z

-BRED TO MADER KISS THIS 93K ON MAY 4. DUE FEBRUARY 13TH

- It wouldn't be right if we didn't include a Certainly Flirtin 525C relation in the sale, and a good one to boot
- The RF 202Z cow is one of the top producing black Simmental cows, combining that with the Violet 641A cow, only makes us more excited about her
- This female is very attractive in her front third, carries lots of mass and angularity, while maintaining a very good skeletal to her

Lot **24**



Dam of Lot 24



Sire of Lot 23-25

MADER A LIST 159K

4 February 2022 • MDR 159K • BPG1403742 • BW 80

Homo Polled

EPDs						
CE	BW	WW	YW	Milk	MC	MWW
9.2	3.6	89.6	140.7	17.4	7.5	82.2

SIRE: LFE THE RIDDLER 323B
MADER THE NATIONAL 43E
LFE BS VIOLET 641A

DAM: LFE HEAVY HITTER 352C
MADER A LIST 63G
MADER A LIST 214B

-BRED TO MADER KISS THIS 93K ON MAY 20. DUE FEBRUARY 28TH

- Tremendous rib shape, udder quality, foot structure, and that real nice neck and head
- As you can see with her mom pictured, there is a lot of body and easy fleshing ability in this cow family, as her grandam is an absolute tank as well
- The National daughters in the herd are among our favorite young cows, easy keeping, milking heavy, and producing pounds

Lot **25**



Dam of Lot 25



Maternal Brother of Lot 25

MADER CHARM 174K

11 February 2022 • MDR 174K • BPG1411284 • BW 81

Homo Polled, Hetero Black

EPDs						
CE	BW	WW	YW	Milk	MC	MWW
9.9	3.1	86.1	137.0	18.9	7.9	62.0

SIRE: MADER THE NATIONAL 43E

LFE THE RIDDLER 323B
LFE BS VIOLET 641A

DAM: MADER CHARM 508F

LFE HEAVY HITTER 352C
MADER GOODLUCK CHARM 139Y

-BRED TO MADER KISS THIS 93K ON MAY 14. DUE FEBRUARY 23TH

- She has a lot to offer through that rear third and over her top, travels on a nice big foot, and will be low maintenance momma cow
- These National daughters are unique in that they all have so much body and stoutness, yet are all so stylish and attractive through that front end
- Her dam is a hard working young cow, last years bull brought \$8500

Lot **26**



Dam of Lot 26



Sire of Lot 26

MADER YARA 151K

1 February 2022 • MDR 151K • BPRS1411281 • BW 86

Homo Polled, Hetero Black

EPDs						
CE	BW	WW	YW	Milk	MC	MWW
3.0	3.9	92.5	138.0	22.8	-1.7	69.1

SIRE: MADER OZARK 39H

BROOKING FIREBRAND 6068
MADER LIPS LIKE SUGAR 27C

DAM: W2 YARA 030H

R PLUS SWAYZE 7083E
W2 YARA 329F

-BRED TO MADER KISS THIS 93K ON MAY 14. DUE FEBRUARY 23TH The resulting calf will be a 7/8, so a purebred on paper

- A powerful 3/4 blood heifer that checks off a lot of boxes, she is deep in her rib shape, fluid on the move, attractive in her design
- Her dam was purchased through the Border City sale a few years back and has turned into a real highly sought after cow around here
- Ozark was a past high seller in our sale that we were fortunate to use a bit before our good friends needed him

Lot **27**



Dam of Lot 27



Sire of Lot 27

MADER TIMELESS 11K

2 January 2022 • MDR 11K • BPG1441307 • BW 83

Homo Polled, Hetero Black

EPDs						
CE	BW	WW	YW	Milk	MC	MWW
9.1	2.9	90.7	141.5	15.3	7.1	60.6

LFE GOTHAM 819Y

LFE HEAVY HITTER 352C

SIRE: LFE THE RIDDLER 323B

DAM: MADER TIME LAPSE 185G

LFE BS CHARO 23Y

J ANCHOR DEW TIME 6X

-BRED TO MADER KISS THIS 93K ON MAY 20. DUE FEBRUARY 28TH

- I repeat myself often when I say the Riddler females in our herd, are some of our most productive cows, who are easy to appreciate
- Her dam is very capacious, very powerful, and very productive
- This female is smooth made, sound footed, and will make a great brood cow

Lot **28**



Maternal Sister of Lot 28



Sire of Lot 28

MADER BLACKGOLD 119K

21 January 2022 • MDR 119K • BPG1411270 • BW 83

Homo Polled, Homo Black

EPDs						
CE	BW	WW	YW	Milk	MC	MWW
7.1	4.1	88.3	129.7	16.4	5.1	60.6

LFE HEAVY HITTER 352C

LFE THE RIDDLER 323B

SIRE: MADER PEARL HARBOUR 149F

DAM: MADER BLACKGOLD 310D

LFE BS SHEILA 82A

MADER PLD BLACKGOLD 11P

-BRED TO MADER KISS THIS 93K ON MAY 10. DUE FEBRUARY 19TH

- Here is a prime example to comment in lot 27's footnote about having a lot of very productive Riddler daughters working here
- Blackgold 310D has consistently brought in good calves, and the combo to Heavy Hitter just adds to this females future
- She's long spined, sleek in her design, will drop a great udder, and have problem free feet

Lot 29



Sire of Lot 29



Paternal Granddam

MADER LADY 163K

6 February 2022 • MDR 163K • BPG1411283 • BW 85

Homo Polled, Homo Black

EPDs					
CE	BW	WW	YW	Milk	MC MWW
3.0	3.4	85.0	123.3	18.4	0.8 60.9

LCDR WITNESS 541C
 SIRE: MADER TRIUMPH 119H
 CG BLACK OPAL 652S

LFE HEAVY HITTER 352C
 DAM: MADER LADY 612G
 MADER LADY DAISY 123Y

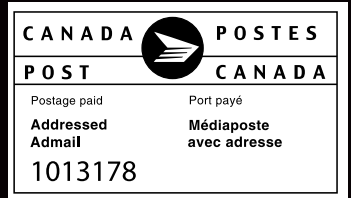
-BRED TO MADER WALK THIS WAY 224B ON APRIL 1. DUE JANUARY 11TH

- A twist in pedigree, incorporating the Lady cow family that helps steer our red program, with the Opal cow family who has been the backbone of our black
- Stacked maternal greatness lay within this pedigree, and we feel a heifer that will only get better as she develops even more
- The udder she is setting down looks flawless, she moves easily on a big foot, and is very broody and powerfully constructed in her bodytype
- Our first daughter out of Triumph to sell sold for \$16,000 at FNL





Request Return To:
Box 1 Site 12 RR2
Carstairs, AB T0M 0N0



Time Sensitive Material



Ladies
NIGHT

BRED FEMALE SALE