

34th Annual

MADER

Ranches

**BULL
POWER** SALE

FRIDAY, FEBRUARY 17th, 2023
1 PM: AT THE RANCH, CARSTAIRS, AB

Welcome 34TH ANNUAL BULL POWER SALE

They say time flies when your having fun! By the time we all finish one project, another one has been started, whether we're calving, breeding, seeding, haying, silaging, combining, or sorting calves for a sale!

Like every year, we are faced with challenges and hard decisions, based on what this crazy world or the weather dictate for us, but with strong morals, a great work ethic, and the determination to keep this agriculture sector a forefront industry, we all band together to push forward! I commend each and every one of you, as your dedication to ride out the waves of this beef industry, hopefully once again can pay its dividends, as the lifestyle it offers us to raise families, work for ourselves, and continue family legacies is unreplaceable! We are strong believers that with a shortage of beef worldwide, and the demand increasing, we should see some outstanding years ahead in this cattle market. Today's breeding decisions on all of our herds will further excel our product, our marketability, and our bottom line, when we see the demand increase to an optimal level.

As I sit down and write this, we also know we have been gifted with tremendous weather through much of the fall, allowing crops to come off, calves to get weaned in a timely manner, and much of the odds and ends list to be completed. We were able to clip bulls throughout December with ease, but with a later calendar and a week cold stint there, it was a challenge to get pictures done and a catalogue built in our normal timeframe. With that said, we are grateful again to get a recent break in weather, allowing us to get the catalogue completed, and have a great run of calving weather as we approach the halfway point.

Our 2023 bull sale offering is amongst the strongest group of bulls we have offered, both through their genetic make-ups, and the physical phenotypes. We continue to source the absolute best sires and dams that we can, to allow us to offer the highest quality of bulls that we can to our customers. This year, you will notice an increase in age advantage bulls, a group we are very proud of. Larger sire groups or multiple flush mates for our customers to choose from, is our optimal goal, to allow you to select for consistency and quality.

The same people you discuss your bull needs with, are the same people that do the calving, feeding, handling, and breeding selections on these bulls. You can trust in confidence, we will be honest and upfront, and can help you sort through them to find a bull(s) that meets your requirements and budget. Our goal is to develop these bulls and grow them out to a maturity level, where they can then go out and breed cows right away, not loosing a bunch of extra fat, and maintaining longevity. All bulls will be semen tested and evaluated prior to the sale by Dr. Waylon Wise.

We want to say "thank you" to all our customers over the past year(s), many of you who are repeat buyers, and some of you who we have just gotten to know! We can't express our gratitude enough for your confidence in our program and product, and we sincerely appreciate doing business with you, but mostly to call you, our friends. We also need to give a huge thank you to all our friends, family and workers who help make things possible for our family and our ranch. As you all know, it takes a village to help raise children, and it seems to take the same village to help run a livestock operation with unknown schedules and never a lack of projects!

We have now raised and sold purebred breeding stock for 49 years, and with that said, we know the importance of good relationships, communication, and what it means to stand behind the product we offer. If you have any problem with something purchased from us, we want to be the first to know about it, and will do our utmost to create a win-win for both parties. Again, this year, we have set a pen of bulls aside for spares, and to ensure if any of our customers have an issue, we have you covered.

The sale is at the ranch, 10 miles west of Carstairs. There will be 90 bulls, purebreds, percentage, age advantage, reds and blacks, and baldies. There will be a good mixture of calving ease bulls for heifers, and performance bulls for cows. Viewing of the bulls is also available anytime prior to sale. We would love to have a chance to meet many of you in person and catch up with others we haven't seen in awhile!

See you February 17th!

Cheers,

Ryley and the whole Mader Crew

THE PEOPLE OF MADER RANCHES



RYLEY & JILL

STELLA & HAWKIN MADER

maderranches@gmail.com

Ryley's Cell: 403.807.8140

Jill's Cell: 403.990.9187

Ryley has been a part of the family operation from a young child and was joined by Jill in 2007. Everyone is hands on in the business activities and will look forward to many years in the cattle industry.

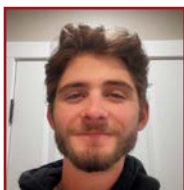


RANDY & RONDA MADER

rrmader13@gmail.com

Randy's Cell: 403.660.1123

Randy & Ronda started Mader Ranches in 1975. They have worked hard in the cattle industry for 47 years and see all aspects of the operation from day-to-day, management & mentorship.



MITCH

Mitch joined the team this year. He manages the feed wagon, mechanics, and assists with some cattle tasks that make him a huge asset to our operation.

WWW.MADERRANCHES.COM

Sale Day Information

SCHEDULE

February 16th 4 PM : Refreshments & Pizza
February 17th 12 Noon : Beef Lunch - Kodiak BBQ
1 PM : SALE TIME
Followed by Hospitality

SALE STAFF

Auctioneer:	Ryan Dorran	403.507.6483
Ringmen:	Mark Stock	403.357.8104
	Rod Mcleod	403.540.7986
	Taylor Richards	306.821.4169

SALE MANAGER



Bohrson Marketing Services Ltd.

Scott Bohrson	403.370.3010
Taylor Richards	306.821.4169
Rob Voice	306.270.6082
Cody Haney	403.845.8806
Jay Sibbald	403.899.2625

www.bohrson.com

ACCOMODATIONS

Ramada - Olds	403.507.8349
Best Western Inn - Olds	403.556.5900
Didsbury Country Inn - Didsbury	403.335.8088
Golden West Motor Inn - Carstairs	403.337.3333

BUYER INCENTIVE

- \$150 taken off bull purchase price if you take them home sale day or within a week of sale day.

PHOTOS & VIDEOS

- Taken in house by Mader Ranches
- Can be viewed online at www.maderranches.com
- Bulls pictures and videos are taken Jan/23

INSPECTION

Cattle may be viewed prior to the sale by arrangement made with Mader Ranches. Come to the bull farm and view bulls as well as their dams prior to February 15th. On February 16th the bulls will be penned at the sale barn and can be viewed there at that time.

TERMS & CONDITIONS PAGE 61

ON OFFER

72 Red & Black Simmental & SimAngus Yearlings
21 Red & Black Simmental & SimAngus Age Advantage

SUPPLEMENTARY INFO

A supplementary sheet will be available on sale day. This will include weights, scrotals and any updated information.

DELIVERY

We offer free delivery to central points in Western Canada. If you are located past a convenient location in Canada, we will split delivery costs 50/50. For US purchases we will split the delivery costs and buyer is responsible for vet & border costs. We will start delivering on March 15th at our convenience, otherwise pick-up will be available at our Ranch. Free feed until delivery. Delivery is between March 15 - April 15th.

DISCLAIMER

While every effort has been taken to ensure that all details are correct, the descriptions contained in this catalogue are often opinion only. We cannot be responsible for the consequences of any actions taken or not taken as a result of these opinions.

HOW TO FIND US?

Directions From Carstairs:

Go North on Main Street (10th Ave) out of town, Road automatically turns west(Twp Rd 303).

Go West 15 kms to Range Road 32.

Turn South. Ranch is on your right.

Directions From Hwy 22:

Go East 11 kms on Twp Rd 303 (Carstairs Blind Line) to Range Road 32.

Turn South. Ranch is on your right.

FIND US ON GOOGLE MAPS - Mader Ranches



Offering \$2,500 in SALE CREDITS
Register to bid sale day and be entered to win 1 of 5 - \$500 credits

Unable to Attend the Sale?

There is nothing better than being at the sale in person. You get the opportunity to see the cattle, catch up with friends and meet new people! We hope you can join us, but if you can't make it we want to make it convenient for you to participate from where ever you may be!

1. GIVE US A CALL

We are all here to help you. We can talk with you about the cattle that interest you, logistics, and if you like we can even offer an opinion. We have our contact numbers listed on Page 2.

2. PHONE BIDDING

An option that works at all times. You can call any of us or a Bohrson Marketing Agent of your choice. We trust and value this team and encourage you to do the same.



Scott Bohrson
Taylor Richards
Rob Voice
Cody Haney
Jay Sibbald

403.370.3010
306.821.4169
306.270.6082
403.845.8806
403.899.2625

www.bohrson.com

3. BID AND VIEW ONLINE

You can participate from almost anywhere with an internet connection. Please feel confident in using DLMS for your online viewing and bidding. If you have any questions, please contact our representative at DLMS, Mark Shologan 780.699.5082

Can't make it to the sale? **Watch & Bid Online.**

With DLMS you can Watch, Listen & Bid on your computer just like you were there with online bidding over the internet

Instructions for Viewing And Bidding At the Sale

Visit www.dlms.ca, Fill out the registration form located under registration and sign-up for your free user account to select a username and password.

BIDDERS - To be approved as a bidder, Log in and click BUYER APPROVAL tab, select the sale you are interested in bidding at and click sign up.

For more information or for help getting approved Call:
Mark Shologan - 780-699-5082 or DLMS Purebred Team 780.991-3025

Direct Livestock Marketing Systems
We're Making the Connection

D | L | M | S
www.dlms.ca

*To find an agent or sale near you today
visit www.dlms.ca*

Purebred Sales • Daily Presort Sales
Direct Off-farm Sales every Thursdays at 10:00 am

Mader Ranches Warranty Program

We are pleased to offer a warranty program that is designed to help get your bull through the most critical first breeding season. Mader Ranches guarantees to sell you a bull that is structurally sound, a bull that has passed a breeding evaluation by a licensed veterinarian.

Should any Mader bull fail to be satisfactory breeder, unable to physically service a cow or heifer, he will be replaced with a bull of equal value. Should this not be possible, an adjustment will be made to reflect the value of the bull in question or a credit will be given towards the purchase of another bull.

Our warranty program offers a warranty in a language you can understand. While under our warranty your bull is covered for injury, sickness or death. We will service you needs with another bull or a credit to next years sale. Should you have any problem with a bull, contact Mader Ranches directly at 403.807.8140. We require your veterinarian to complete a report and email it to Mader Ranches. We will work with you to make sure your cows get serviced and your are satisfied with your purchase. We have back up bulls set aside for customers.

We offer the following which is the buyers responsibility to purchase at time of settlement:

Duration - 6 months Rate - 6%

Coverage – During Breeding Season:

This warranty covers injury, sickness or death. It does not include freezing semen.

In case of loss, Mader Ranches will not be responsible for anything up and above the purchase of the bull.

The program will cover 100% of the purchase price less salvage value when possible.

Employ a licensed veterinarian to treat, diagnose and/or fill out a vet form. If the animal dies, a post mortem will be required.

Notify Ryley Mader immediately by phone 403.807.8140

Mader Ranches is responsible to make settlement of an approved warranty claim with a suitable replacement.

Exclusions to Warranty:

Injury or death due to malicious, willful or intentional acts or mistreatment by you or your employees are fraudulent claims.

One thing that must be kept in mind, however, is that semen tests most accurately represent the status of sperm production on the day of the exam. If there is an injury, illness or any sort of significant stress that occurs subsequent to the exam the effect on the sperm picture could be enough to affect breeding performance. A new environment, a drastic change in feed quality, being placed in a pen with older bulls are just a few examples of stressors. Any failed breeding soundness evaluation within 6 months of the initial presale evaluation should be assessed in conjunction with the original, pre-sale examination including an independent assessment of both semen smears. In most cases, if the bull received a satisfactory classification on the first evaluation, and that classification was correct, then a subsequent questionable (decision deferred) or unsatisfactory classification is not the fault of the breeder.

CREDIT ONLY NO CASH REFUNDS.

Bulls that are not covered by this warranty option at the time of settlement will not be covered by Mader Ranches other than the breed guarantee standards set by the Canadian Simmental Association.

We highly recommend that bulls that remain at the farm until a later date are covered with our warranty program.

Bear in mind, we stress the importance of Mader Ranches Breeding Season Warranty.

IF YOU CHOSE TO LEAVE YOUR BULL AT MADER RANCHES AFTER THE SALE, YOU MUST PURCHASE WARRANTY FROM MADER RANCHES OR A 3RD PARTY.

Breed Average EPD's
Simmental

EPDs								
CE	BW	WW	YW	MCE	Milk	MWW	AP	TI
7.3	3.7	76.0	111.7	3.9	28.3	66.2	111.2	69.9

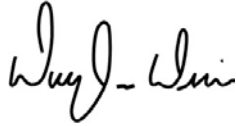
Carcass			
CWT	REA	Fat	Marb
EPD 26.7	0.87	-0.11	-0.05

Cow/Calf Herd Health

Mader Ranches have their entire cow herd on an integrated and comprehensive health and production management program. This program is based on the detailed collection of data on each individual animal at all key health and production points. This information is kept in a secure web-enabled database called Herdtrax™ and is continually monitored and audited by the managing veterinarians at Cow/Calf Health and Management Services (CCHMS).

CCHMS is proud to work with Mader Ranches and if required will provide documentation and verification of all animal health processes and treatments. If there are any questions with respect to the health and production management program at Mader Ranches, please contact myself.

Sincerely,



Waylon Wise



Office: (403)946-4567
Cell: (403)369-8823
Fax: (403)846-5529
drwwise@gmail.com

HERDTRAX™
Cattle Record Management



Waylon ultrasounding cows on summer pasture at Mader Ranches

Bull Preparation

When you focus on building a herd of exceptional females, the resulting bulls not only look the part but they breed it.

Some bulls look fantastic on the day, but it's not good enough to buy a bull on his looks alone. You are buying his potential. Yes, you should trust your eye first, but don't stop there. Study his pedigree, his EPD's, and any related animals. Make sure you look at his performance data, genetic testing and calving ease rating. We provide everything so that you can make an informed choice.

We also do this same homework on the bulls that we select. Talk to any of us! We not only have countless hours of hands on experience with these animals, but we have spent the time travelling, doing homework and visiting with other cattlemen and women. Our customers know that we have put in the effort to ensure the Mader Ranches bulls will go out and breed calves that make them profitable. Our homework is directly linked to your success.

We as a family are committed to the success of our customers. This means we raise and prepare our animals in a manner that promotes fitness and longevity of your new purchase.

The bulls developed on a TMR ration with Bullseye pellet, chopped hay and straw, silage & supplements, minerals and vitamins. They are fed in large groups. They have been professionally developed for real-world commercial conditions. All data and complete performance info provided upon request and on sale day. Please remember that EPD's cannot be compared across breeds.

We have a Complete Herd Health & Vaccination Program with CCHMS - Waylon Wise (See above)
Prior to the sale all bulls have been semen tested, palpated, scrotal measured, and inspected by Dr. Wise.

These bulls are fully guaranteed. Should a bull fail to be a satisfactory breeder, he will be replaced with another bull of equal quality or a credit will be given.

NO REFUNDS. Mader Ranches reserves the right to be the first to know about any problems you might have with your bull.

Mader Calving Ease Ratings

3 ratings are used on the bulls to rate them for calving ease, the more stars, the more we recommend them used on heifers



THE MADER RANCHES DIFFERENCE



POLLED GENETICS

Horns are extra work, welfare and safety issues for cattle and cattlemen. Mader Ranches prides itself on its Polled genetics since 1975



FAMILY OPERATION WITH LONG TIME COMMITMENT

The Mader Family has been in the cattle business for 47 years. This is the 34th Annual Bull Sale and plan on a extensive future with our 2nd and 3rd generation. We work hard to ensure our customers are happy with their investment. We are committed to helping our customers achieve their goals and we back our animals.



HEART OF OUR HERD

We have a large nucleus of foundation females and pride ourselves in the cow families that extend down from that base. These bulls on offer are the top 95 bulls that we have to offer from 300 calving cows. They are the best of the best.



DEPTH OF PEDIGREE

We utilize Embryo Transfer and AI extensively to multiply the consistency in our herd. We find that by reproducing multiple daughters and sons from our donor cows and breed leading sires, we can offer consistency to our customers.



WEIGHTS

These bulls are being fed in order to reach their genetic potential. We really try to encourage fitness and longevity in our bulls. We are feeding our bulls for proper development of their body, feet and legs and reproductive organs.



ACCURATE DATA

We have invested into cattle record keeping and management so that all of our data is as accurate as possible. We have our herd on the HerdTrax program as it integrates well with the Total Herd Enrollment with the Canadian Simmental Association. All data is available.

Picture taking crew



Leptin Testing at **MADER** *Ranches*

Q-select

Genomic testing allows you to identify variations in specific genes that have a large impact on animal performance and overall profitability. Leptin is one of these genes, it is associated with increased fat deposition in beef cattle responsible for regulating energy by suppressing or increasing the intake of nutrients by an animal. TT animals exhibit an increased intake, resulting in a subsequent increase in marbling and fat deposits as the signal to reduce appetite is lost. Whether you are selecting for weight gain, milk production or meat quality leptin plays a role. In conjunction with PMCH the ability to increase rib eye area whilst maintaining and enhancing tenderness can be achieved through bull selection. A TT (Leptin), AA (PMCH) animal has the ability to finish for slaughter approximately 30 days faster with an ADG of >3 lbs. Whilst also producing a higher rate of 'AAA' Canadian grade beef. Milk production is also connected to the leptin gene, cattle with a T allele have been shown to have higher milk production than CC cows, whilst also turning off significantly heavier beef calves.

Knowing what genes you are incorporating into your herd with a Mader Rancha bull is a powerful management decision. Increasing your ability to produce higher quality, quicker finishing animals that will last longer in your herd, producing better calves. The Q-select science has been integrated across feedlots, purebred and commercial cattle settings. These genes provide results.



↑ Weaning weight av. 27lbs
↑ Cow productivity av. 2yrs
Milk production
12th Rib backfat
Marbling & yield grade



↑ Tenderness av. 10%
Marbling
12th Rib backfat



↑ Hot carcass weight av. 10lbs
Rib eye area
Docility



Rib eye area

DNA tests to increase the productivity of your herd.

Find out what you have today!

Contact:

Kirsty McCormack

M: (403) 710-9785

P: (306)-956-2071

kmccormack@quantumgenetix.com



@QuantumGenetix



CALVES COMING IN 2023



RPLUS *Mandate* 1044J

R PLUS YUMA 9087G X MISS R PLUS 4193B

USED HEAVILY IN THE BLACK AI PROGRAM BOTH SPRING AND SUMMER 2022 BREEDING SEASONS



MADER
Son of Anarchy 144H

TJSC BOONE PICKENS 46C X LFE BS SHEILA 82A
USED HEAVILY IN THE HEIFER PEN 2 YEARS IN A ROW

MADER
Walk The Line 92J



MADER WALK THIS WAY 224B X IRCC DARLIN' 613D

USED HEAVILY IN THE RED AI PROGRAM BOTH SPRING AND SUMMER 2022 BREEDING SEASONS

Sisters to the Sale Bulls



SIRE: SVS DYNASTY 915G
Sold to LABATTE SIMMENTALS
at Ladies Night for \$17,000



SIRE: SVS BETTS 808F
Sold to WESTMAN FARMS
at LADIES NIGHT for \$52,000



SIRE: BGS/BM CAPTAIN SCREAM 63D
Sold to JERAMIE HEISTAD
at Ladies Night for \$10,000



SIRE: RF SHAKEDOWN 74H
Sold to Black River Farms
at Friday Night Lights for \$19,500



SIRE: SVS DYNASTY 915G
Sold to LANKIRK FARMS
at Friday Night Lights for \$8,000



SIRE: RF SHAKEDOWN 74H
Sold to FERME GAGNON
at Friday Night Lights for \$16,000



SIRE: MADER PEARL HARBOUR
Sold to TANDEM T FARMS
at Friday Night Lights for \$12,750



SIRE: MADER WALK THIS WAY 224B
Sold to TANDEM T FARMS
at LADIES NIGHT for \$9,000



SIRE: MADER TRIUMPH 119H
Sold to KCH Cattle Co
at FRIDAY NIGHT LIGHTS for \$16,000



SIRE: BGS/BM CAPTAIN SCREAM
Sold to Jensen Simmentals
at Ladies Night for \$7,000



SIRE: SVS BETTS 808F
Sold to CORY CAMPBELL
at LADIES NIGHT for \$9,000



SIRE: LCDR WITNESS 541C
Sold to KCH CATTLE CO
at Ladies Night for \$17,000

References Sires

SVS **BETTS** 808F

4 January 2018 • TLAS 808F • PTG1235797

EPDs									
BW	205 Wt.	365 Wt.	CE	BW	WW	YW	Milk	MCE	MWW
93	945	1468	7.2	4.9	89.2	129.8	22.5	4.8	67.1

Top 10-15% for WW & YW, Top 30% for TI
Homo Polled

SVS CAPTAIN MORGAN 11Z
BGS/BM CAPTAIN SCREAM 63D
RF SCREAM 215Z

R PLUS RELOAD 2006Z
WFL RED SAGE 506C
WFL RED SAGE 1003Y



MADER **WALK THIS WAY** 224B

27 July 2014 • MDR 224B • BPTG1139930

EPDs									
BW	205 Wt.	365 Wt.	CE	BW	WW	YW	Milk	MCE	MWW
84			11.8	0.4	96.0	151.5	29.5	9.6	77.5

Top 1% for YWT, TI & API,
Top 10% for CE, BW, WWT, MCE, MWT & CT
Homo Polled, Hetero Black

LFE VIPER 455U
NCB COBRA 47Y
NCB MISS DREAM 22T

MADER P BLACK IRONMAN 22U
MADER P IRON SUGAR 7X
LFE FAMOUS 632T



LFE **HALL PASS** 851G

29 December 2019 • LFE 851G • PG1326763

EPDs									
BW	205 Wt.	365 Wt.	CE	BW	WW	YW	Milk	MCE	MWW
95	820	1545	4.3	5.8	80.3	122.3	22.6	0.9	62.8

Dark Cherry Red
Homo Polled

LFEISS BLACKADVANCE 426U
LFE BLOCKBUSTER 3011C
LFE RS SHELBY 2120X

LFE VEGAS 3145A
LFE RS COCOA 658C
LFE RS COCOA 107X



RF **SHAKEDOWN** 074H

12 January 2020 • GNR 74H • BPTG1316267

EPDs									
BW	205 Wt.	365 Wt.	CE	BW	WW	YW	Milk	MCE	MWW
106	831	1509	3.0	6.9	108.3	156.8	20.6	1.9	74.8

Top 3% for WWT, YWT, MARB & TI
Homo Polled, Homo Black

NCB COBRA 47Y
NGDB STRUCTURE 34D
NGDB LOUISE 411 B

CCR COWBOY CUT 5048Z
IPU MS. COWBOY CUT 135D
IPU MS. TULA 19B



MADER **PEARL HARBOUR** 149F

8 February 2018 • MDR 149F • BPTG1242628

EPDs									
BW	205 Wt.	365 Wt.	CE	BW	WW	YW	Milk	MCE	MWW
89	897	1417	5.7	2.7	88.3	134.0	14.3	2.0	58.5

Top 3-10% for CW, WW, YW, TI
Homo Polled, Homo Black

MRL DISCOVERY 21A
LFE HEAVY HITTER 352C
LFE BS JULI 641X

LFE THE DARK NIGHT 350U
LFE BS SHEILA 82A
LFE BS SHEILA 136T



MADER **THE NATIONAL** 43E

12 January 2017 • MDR 43E • BPTG1205672

EPDs									
BW	205 Wt.	365 Wt.	CE	BW	WW	YW	Milk	MCE	MWW
80	959		8.3	2.4	89.8	145.7	25.1	7.7	70.0

Top 1-2% for WW, YW, TI, API, CW & REA,
Top 5-30% for MCE, MWWT, Marb, CE & BW
Homo Polled, Hetero Black

LFE GOTHAM 819Y
LFE THE RIDDLER 323B
LFE BS CHARO 23Y

NCB COBRA 47Y
LFE BS VIOLET 641A
LFE BS VIOLET 128Z

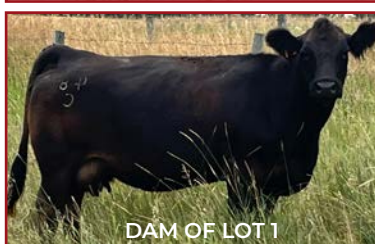




LOT 1



MADER NIGHT SHIFT 63K



-A Shakedown son that expresses ultimate muscle expression, width of top, extension throughout, a very sound foot, and a very balanced design
 -He was recently crowned Legends of the Fall All Breeds Champion bull at Farmfair, Reserve Champion SR Bull Calf, Reserve Champion All Breeds Presidents Choice Bull Calf at Agribition, Champion Int Bull Calf
 -A tremendous spread from birth to weaning starting at 88lbs and having an actual weaning weight of 1030lbs
 -From an EPD standpoint he ranks in the top 1% for WW, YW, and TI, and in the top 3-5% for MWWT, MARB, and API
 -His dam is as hard working of a cow as you can make them... moderate in stature, beautiful udder design, feminine, big ribbed, milks heavy, and stems from the many time proven, Iron Sugar 7X donor
 -A maternal sister to Night Shift was sold in our recent Ladies Night sale, demanding \$17,000 to Labatte Simmentals as a lead off female
 -We plan on AI'ing extensively to this bull in our own program

12 January 2022 • MDR 63K • BPG1398065

Homo Polled, Homo Black

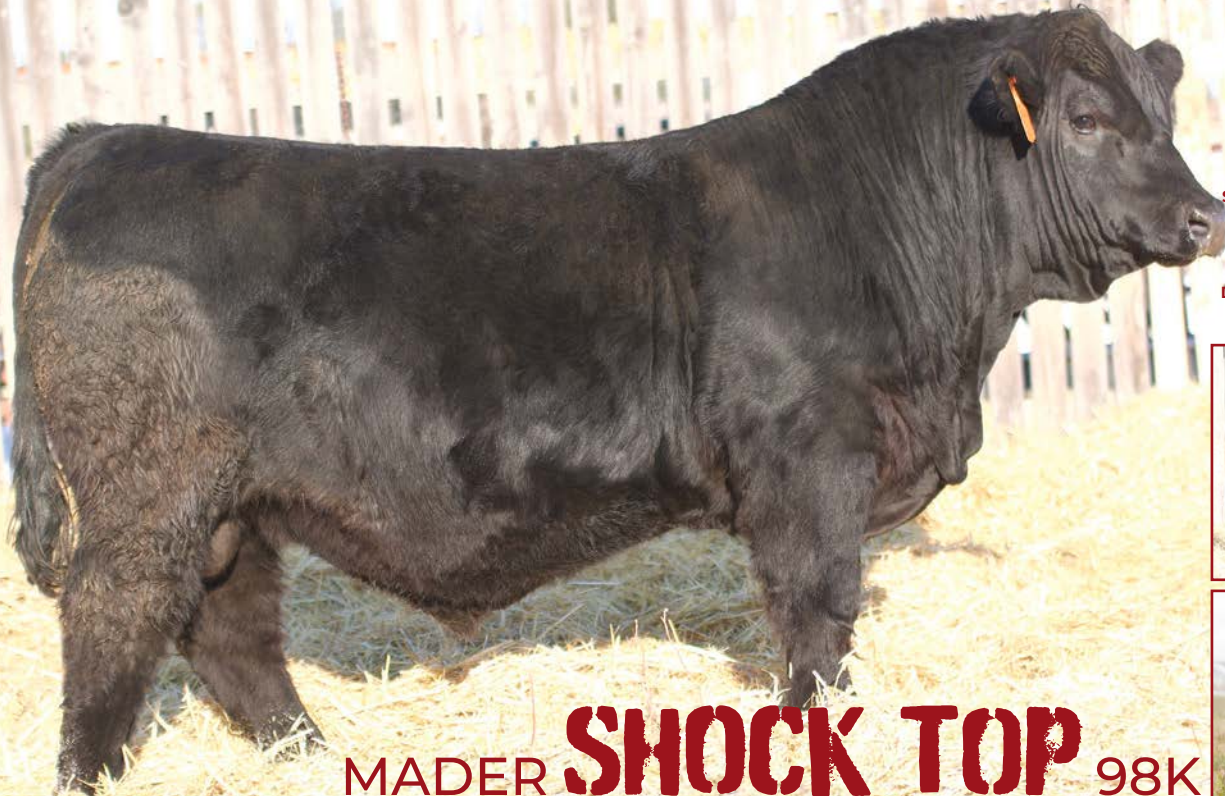
EPD	EPDs										Carcass EPDs		
	CE	BW	WW	YW	Milk	MCE	MWW	API	TI	CWT	REA	Fat	Marb
Breed Rank	65	90	1	1	60	60	4	5	1	10	2	95	3
	6.4	5.8	105.6	153.9	26.5	3.7	79.3	131.63	89.86	38.3	1.18	-0.08	0.17
Leptin Testing	Leptin Testing										CRH4		
	BW	205 Wt.	365 Wt.	ADG	WPDA	Leptin	PMCH	IGF2	CRH4	CT	AA	CC	CG
	88	1049	1483	2.71	4.18								

NGDB STRUCTURE 34D
 SIRE: RF SHAKEDOWN 074H
 IPU MS. COWBOY CUT 135D

WHEATLAND HIGH OCTANE169Y
 DAM: MADER SUGAR CANE 48C
 MADER P IRON SUGAR 7X



2



NGDB STRUCTURE 34D
SIRE: RF SHAKEDOWN 074H
 IPU MS. COWBOY CUT 135D
 SSC SHELL SHOCKED 44B
DAM: RUSGOLD MS SCHOCKEM 3G
 BARLEE GOLDLOCKS



LOT 2



DAM OF LOT 2

MADER SHOCK TOP 98K

15 January 2022 • MDR 98K • BPTG1398416

Homo Polled, Homo Black Pending

	EPDs					Carcass EPDs							
	CE	BW	WW	YW	Milk	MCE	MWW	API	TI	CWT	REA	Fat	Marb
EPD	5.6	3.7	81.6	114.0	21.8	2.0	62.6	120.1	75.1	25.7	0.68	-0.08	0.11
Breed Rank	70	50	30	45	85	80	75	25	20	60	95	95	10

Leptin Testing					CE
BW	205 Wt.	365 Wt.	ADG	WPDA	
83	1034	1456	2.64	4.01	★★★

Leptin Testing				PENDING
Leptin	PMCH	IGF2	CRH4	
				★★★

-This guy was one that we watched develop and get better and better everyday since a young age
 -Bold in his rib, sound structured, good footed, nice skulled, and is a healthy balance between calving ease and performance
 -His dam was purchased as the lead off and high selling black bred heifer from the Border City sale a few years back for \$13,000, and has been flushed successfully
 -The genetic combination of Shakedown crossed onto a Shell Shocked female, offers an outcross pedigree to many

3



NGDB STRUCTURE 34D
SIRE: RF SHAKEDOWN 074H
 IPU MS. COWBOY CUT 135D
 LFE THE RIDDLER 323B
DAM: MADER CAT HOUSE 35D
 DOWNHILL BLACK LADY 12W



MATERNAL GRANDSIRE



MATERNAL BROTHER OF LOT 3

MADER IRON WILL 51K

10 January 2022 • MDR 51K • BPG1403705

Homo Polled, Homo Black

	EPDs					Carcass EPDs							
	CE	BW	WW	YW	Milk	MCE	MWW	API	TI	CWT	REA	Fat	Marb
EPD	4.8	5.4	100.5	151.4	23.8	4.2	74.1	125.0	84.5	37.7	0.86	-0.08	0.08
Breed Rank	80	85	1	1	75	50	20	15	2	15	55	90	10

Leptin Testing					CE
BW	205 Wt.	365 Wt.	ADG	WPDA	
92	887	1445	3.49	4.01	★★★

Leptin Testing				PENDING
Leptin	PMCH	IGF2	CRH4	
				★★★

-A Shakedown son loaded with power and performance, backed by one of my favorite black Riddler cows
 -Dam has great feet, very sound and level udder, and dominates year after year in terms of quality production
 -He boasts an 887lb Adj WW, a 1445 Adj YW, and ranks in the top 1% for WW and YW
 -Many appreciate this bull for his overall length, mass, width of base, and large foot and testicles
 -Easily a crowd favorite for all that have toured the bull pens

4

NGDB STRUCTURE 34D

SIRE: RF SHAKEDOWN 074H
IPU MS. COWBOY CUT 135D

MADER FULL MONEY 145X

DAM: MADER A LIST 214B

MFR ROCKET GIRL 9122W



MATERNAL BROTHER OF LOT 4



LOT 4

MADER GIBSON 69K

12 January 2022 • MDR 69K • BPG1403711

Homo Polled, Homo Black

	EPDs					Carcass EPDs							
	CE	BW	WW	YW	Milk	MCE	MWW	API	TI	CWT	REA	Fat	Marb
EPD	4.2	7.8	109.3	157.5	26.6	3.6	81.3	118.8	86.4	41.2	0.92	-0.09	0.07
Breed Rank	85	100	1	1	55	60	3	25	1	10	40	80	15

	Leptin Testing					CE			
	BW	205 Wt.	365 Wt.	ADG	WPDA	Leptin	PMCH	IGF2	CRH4
	92	1053	1431	2.36	4.06	CT	AT	CC	CG

-This was the heaviest bull at weaning, coming off the cow at 1035lbs
 -He has great extension through that front third, carries lots of spring and depth of rib to him, and is powerful through his hip design and lower quarter
 -His dam is sired by a full brother to our famous Ironsugar 7X female, and is an absolute rig of a cow in terms of power and easy fleshing ability
 -This bull will sire you those growthy progeny, while maintaining large maternal strength
 -Sired by the \$70,000 RF Shakedown sire who has left us with one hell of a good set of sons and daughters

5

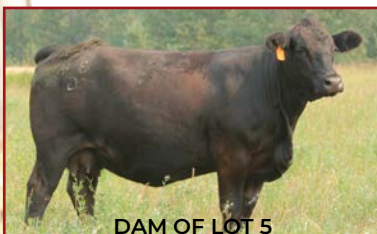
NGDB STRUCTURE 34D

SIRE: RF SHAKEDOWN 074H
IPU MS. COWBOY CUT 135D

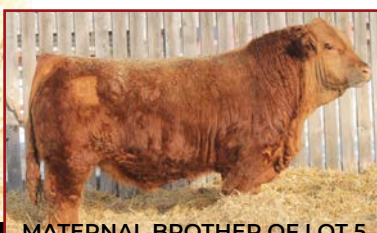
MADER THE NATIONAL 43E

DAM: MADER BLACKGOLD 34G

MADER BLACKGOLD 139A



DAM OF LOT 5



MATERNAL BROTHER OF LOT 5

MADER TEXAS HOLD EM 50K

10 January 2022 • MDR 50K • BPG1403704

Homo Polled, Hetero Black

	EPDs					Carcass EPDs							
	CE	BW	WW	YW	Milk	MCE	MWW	API	TI	CWT	REA	Fat	Marb
EPD	5.0	6.4	105.7	159.1	23.2	3.1	76.1	123.0	85.9	44.8	0.99	-0.07	0.06
Breed Rank	80	95	1	1	80	65	15	20	1	3	20	100	15

	Leptin Testing					CE			
	BW	205 Wt.	365 Wt.	ADG	WPDA	Leptin	PMCH	IGF2	CRH4
	90	955	1557	3.76	4.22	CT	AT	CC	CC

-One of the heaviest yearling bulls in the whole offering, boasting a 1557lb Adj YW, and ranking in the top 1% for WW and YW, like most Shakedown sons
 -If performance and power is what your after, this guy checks off all the boxes as he is large framed, is explosive in terms of thickness and volume in his middle third, is superior in length of body, and very docile
 -His dam is just a 2 year old cow that is beautifully constructed from the ground up, and whose last years son sold for \$10,000 to the Steed brothers, and also a bull we used on our heifers
 -These National daughters are proving to have great feet and udders, and are earning their keep raising big calves across the board

6

NGDB STRUCTURE 34D

SIRE: RF SHAKEDOWN 074H

IPU MS. COWBOY CUT 135D

LFE HEAVY HITTER 352C

DAM: MADER ELSA 89F

MADER ELSA 15B



DAM OF LOT 6



MATERNAL BROTHER OF LOT 6



LOT 6

MADER CONTEMPLATION 59K

11 January 2022 • MDR 59K • BPG1403708

Homo Polled, Homo Black Pending

EPD	EPDs					Carcass EPDs							
	CE	BW	WW	YW	Milk	MCE	MWW	API	TI	CWT	REA	Fat	Marb
Breed Rank	75	75	5	10	100	55	65	30	10	15	60	90	15

-Certainly a pen favorite simply for the softness and capacity he carries in that middle third
 -He is big testicled, has adequate muscle definition, stout topped, and moves out with ease
 -Here is a bull that just puts it all together and is best described as the bull with loads of meat and potatoes
 -His dams first two calves also sold through this sale demanding a lot of attention for their extra rib shape, extra easy doing ability, and their overall balance and eye appeal
 -The dam is very easy to appreciate with a nice blaze face, carries great body capacity, and has a level udder with small teats

Leptin Testing					CE
BW	205 Wt.	365 Wt.	ADG	WPDA	
84	848	1314	2.67	3.53	★★★

MADER FULL CIRCLE 62K

12 January 2022 • MDR 62K • BPG1403709

Polled, Homo Black

EPD	EPDs					Carcass EPDs							
	CE	BW	WW	YW	Milk	MCE	MWW	API	TI	CWT	REA	Fat	Marb
Breed Rank	60	70	5	5	90	50	50	15	5	20	60	100	10

-A maternal brother was a feature last year selling to Wayne Starchinsky
 -A bull that expresses a great haircoat, is very easy fleshing, is very athletic on the move, and stems from a great line of productive cows
 -His dam is a granddaughter of the great Sierra 524S donor, a female leaving her mark in our herd with multiple high end bulls to sell, and many daughters and granddaughters retained in the herd
 -This bull will continue to grow into a herdbull you will love to look at all the time

Leptin Testing					CE
BW	205 Wt.	365 Wt.	ADG	WPDA	
87	821	1336	3.22	3.61	★★★

7

NGDB STRUCTURE 34D

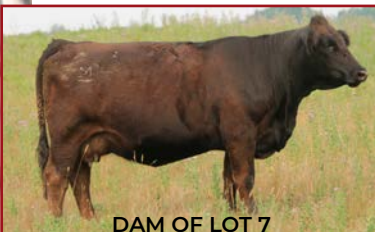
SIRE: RF SHAKEDOWN 074H

IPU MS. COWBOY CUT 135D

MADER THE NATIONAL 43E

DAM: MADER SIERRA 97G

MADER PROMISELAND 19B



DAM OF LOT 7



MATERNAL BROTHER OF LOT 7

8

NGDB STRUCTURE 34D

SIRE: RF SHAKEDOWN 074H
IPU MS. COWBOY CUT 135D

MRL EL TIGRE 52Z

DAM: PERKS NINA 515F

PERKS NINA 215A



DAM OF LOT 8



MATERNAL BROTHER OF LOT 8

MADER SEBASTION 53K

11 January 2022 • MDR 53K • BPG1403707

Homo Polled, Hetero Black

EPD	EPDs					Carcass EPDs							
	CE	BW	WW	YW	Milk	MCE	MWW	API	TI	CWT	REA	Fat	Marb
Breed Rank	3.0	5.9	90.6	132.4	15.8	1.6	61.1	111.1	75.2	29.3	0.91	-0.09	0.02
	90	90	10	15	100	85	80	50	20	40	40	85	25

Leptin Testing					CE			
BW	205 Wt.	365 Wt.	ADG	WPDA	Leptin	PMCH	IGF2	CRH4
91	756	1282	3.29	3.50	CC	AA	CC	CC

- These Shakedown calves are so consistent in their type and kind and this bull represents the excellent width of top, angularity, and dimension we have come to love about them
- This is the dams third calf, and her third sale bull, which speaks true colors to her milking ability and the type and kind that she is
- This guy will add length, thickness, and leave great maternal value
- Maternal brothers have been purchased by Alm Ranch and Sjogren Farms

9

NGDB STRUCTURE 34D

SIRE: RF SHAKEDOWN 074H
IPU MS. COWBOY CUT 135D

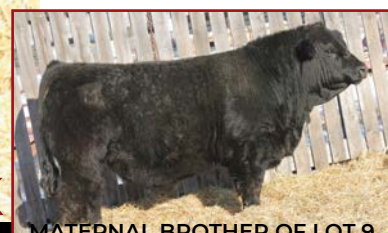
LFE THE RIDDLER 323B

DAM: MADER SHEILA 54E

LFE BS SHEILA 82A



DAM OF LOT 9



MATERNAL BROTHER OF LOT 9

MADER CHARMER 88K

14 January 2022 • MDR 88K • BPG1403716

Homo Polled, Homo Black

EPD	EPDs					Carcass EPDs							
	CE	BW	WW	YW	Milk	MCE	MWW	API	TI	CWT	REA	Fat	Marb
Breed Rank	6.1	4.4	97.0	143.5	18.9	4.1	67.4	124.1	81.9	33.6	0.80	-0.08	0.03
	65	65	2	3	100	50	50	15	3	25	75	95	20

Leptin Testing					CE			
BW	205 Wt.	365 Wt.	ADG	WPDA	Leptin	PMCH	IGF2	CRH4
82	836	1302	2.91	3.63	TT	AT	CC	CC

- His dam is an easy cow to analyze for her great femininity, her easy keeping body mass and width, her high end udder and foot, and her superior genetic makeup
- The Sheila cow family is one of our top black lines around here, and with daughters like this guy's dam, the legacy will continue on
- This bull has lots of extension from front to back, travels with ease, is modest in his birthweight, and with a small head and smooth shoulder, will calve easily

10

NGDB STRUCTURE 34D

SIRE: RF SHAKEDOWN 074H

IPU MS. COWBOY CUT 135D

SPRINGCREEK OLYMPIAN 66A

DAM: MADER BLACKGOLD 407E

MADER BLACKGOLD 9A



DAM OF LOT 10



MATERNAL SISTER OF LOT 10

MADER FRICTION 115K

20 January 2022 • MDR 115K • BPG1403725

Homo Polled, Homo Black

	EPDs					Carcass EPDs							
	CE	BW	WW	YW	Milk	MCE	MWW	API	TI	CWT	REA	Fat	Marb
EPD	4.1	6.4	98.3	139.4	17.9	1.8	67.1	114.8	79.7	33.0	0.84	-0.08	0.04
Breed Rank	85	95	1	5	100	80	50	40	10	25	60	95	20

Leptin Testing					CE			
BW	205 Wt.	365 Wt.	ADG	WPDA	Leptin	PMCH	IGF2	CRH4
92	898	1394	3.10	3.68	CT	AT	CC	CC

-A maternal sister to this bull recently demanded \$17,000 in our Ladies Night sale selling to KCH Cattle as a feature

-This bull is full of red meat, he is heavy muscled, has loads of body mass, is very well balanced, and is so true on his skeleton

-The dam is a big powerful black blaze face cow with a superb udder attachment and teat size, and always brings in a high caliber calf

-Check out the bull below, as his dam is a maternal sister to this bull

11

LCDR WITNESS 541C

SIRE: MADER TRIUMPH 119H

CG BLACK OPAL 652S

WS PROCLAMATION E202

DAM: MADER BLACKGOLD 6H

MADER BLACKGOLD 407E



LOT 11



SIRE OF LOT 11

MADER OLD SPICE 107K

16 January 2022 • MDR 107K • BPG1403722

Homo Polled, Homo Black

	EPDs					Carcass EPDs							
	CE	BW	WW	YW	Milk	MCE	MWW	API	TI	CWT	REA	Fat	Marb
EPD	7.5	3.5	86.7	124.9	23.0	4.4	66.4	125.8	79.2	39.4	1.02	-0.10	0.09
Breed Rank	50	50	15	25	80	45	55	15	10	10	15	70	10

Leptin Testing					CE			
BW	205 Wt.	365 Wt.	ADG	WPDA	Leptin	PMCH	IGF2	CRH4
83	850	1352	3.14	3.56	CT	AT	CT	CC

-A single bull for his sire group, but a bull very worthy of your appraisal

-His sire was kept back to walk with our black heifers this year, as Witness reads tremendous for calving ease, and combined with the maternal greatness of our Opal 652S cow, he was an easy selection

-You combine Witness's calving ease with a Proclamation cow on the bottom side, and this bull should work great on heifers or first calvers

-He is thick throughout, has lots of hair, is smooth over that shoulder, light boned, and small headed

12



TJSC BOONE PICKENS 46C
SIRE: MADER SON OF ANARCHY 144H
 LFE BS SHEILA 82A
 LRX THE GODFATHER 141Z
DAM: MADER OPAL 31C
 CG BLACK OPAL 652S



DAM OF LOT 12



MATERNAL BROTHER OF LOT 12

MADER MONEYBALL 18K

2 January 2022 • MDR 18K • BPG1398062

Homo Polled, Hetero Black

	EPDs					Carcass EPDs							
	CE	BW	WW	YW	Milk	MCE	MWW	API	TI	CWT	REA	Fat	Marb
EPD	9.0	4.0	94.6	142.0	24.2	18	7.15	109.7	76.5	38.6	1.01	-0.10	-0.22
Breed Rank	35	60	3	4	75	80	30	55	15	10	15	60	100

Leptin Testing				
BW	205 Wt.	365 Wt.	ADG	WPDA
84	910	1400	3.06	3.91

Leptin Testing			
Leptin	PMCH	IGF2	CRH4
TT	AA	CC	CC

CE
☆☆

-84lb birthweight, to a 910lb Adj WW, to a 1400lb Adj YW
 -This guy screams performance and power, and expresses extreme muscle expression, width of base, and stoutness over that loin and top
 -His dam is a favorite, a beautifully constructed cow to analyze, but most importantly, a female that has never failed at bringing in one of the biggest, and best calves, year after year
 -The Opal cow family offers well above average foot quality, udder quality, milking ability, and easy fleshing ability
 -A real sale feature here

13



TJSC BOONE PICKENS 46C
SIRE: MADER SON OF ANARCHY 144H
 LFE BS SHEILA 82A
 MADER WALK THIS WAY 224B
DAM: MADER OPAL 195H
 CG BLACK OPAL 652S



LOT 13



PATERNAL GRANDDAM

MADER TELLER 9K

1 January 2022 • MDR 9K • BPG1419669

Homo Polled, Homo Black

	EPDs					Carcass EPDs							
	CE	BW	WW	YW	Milk	MCE	MWW	API	TI	CWT	REA	Fat	Marb
EPD	9.9	2.2	89.1	133.1	25.2	5.0	69.7			32.9	0.93	0.09	-0.09
Breed Rank	25	25	10	10	65	40	35			25	40	75	65

Leptin Testing				
BW	205 Wt.	365 Wt.	ADG	WPDA
78	874	1407	3.33	3.70

Leptin Testing			
Leptin	PMCH	IGF2	CRH4
TT	AT	CC	CC

CE
☆☆☆

-A bull that carries a ton of mass, thickness over his top, muscle definition, and sheer stoutness
 -With that said, he is also born with a 78lb BW, ranks in the top 25% for CE and BW, and is genetically proven to be an easy calver
 -His first calving dam is a special one, sired by the female maker Walk this Way, and backed by the legendary Opal 652S donor
 -The Son of Anarchy calves were a home run here, and talking with other producers who purchased semen packs, they too are thrilled with his calves
 -This bull will calve easy, throwing calves with good vigour and ability to grow

14

TJSC BOONE PICKENS 46C

SIRE: MADER SON OF ANARCHY 144H
LFE BS SHEILA 82A

LFE HEAVY HITTER 352C

DAM: MADER OPAL 62H

MADER BLACK OPAL TY



LOT 14



MATERNAL GRANDDAM

MADER DALLAS 27K

6 January 2022 • MDR 27K • BPG1403696

Homo Polled, Homo Black

	EPDs					Carcass EPDs								
	CE	BW	WW	YW	Milk	MCE	MWW	API	TI	CWT	REA	Fat	Marb	
EPD	8.9	3.4	88.9	134.3	19.1	4.4	63.6	108.1	74.5	36.5	0.95	-0.09	-0.16	
Breed Rank	35	45	10	10	100	45	70	60	25	15	30	85	90	

	Leptin Testing									CE
	BW	205 Wt.	365 Wt.	ADG	WPDA	Leptin	PMCH	IGF2	CRH4	
	79	866	1356	3.06	3.57	TT	AA	CC	CC	☆☆☆

-Big haircoat, explosive hip and top, huge through his spring and depth of rib, and travels on a great foot and leg design

-A bull that is very masculine and mature in his appearance, yet came into the world with just a 79lb BW

-The calves sired by the \$50,000 Son of Anarchy bull, were mostly all unassisted born to first calving heifers, and most of these bulls were 800lbs + at weaning

-He ranks in the top 35% for CE, yet still sits in the top 10% for WW and YW

-First calving dam is an awesome Heavy Hitter daughter expressing a big body type, a very level udder, and a very sound structure

-A pen favorite to us, that will definitely find friends on sale day

15

TJSC BOONE PICKENS 46C

SIRE: MADER SON OF ANARCHY 144H
LFE BS SHEILA 82A

LFE HEAVY HITTER 352C

DAM: MADER LACEY 20H

MADER LACEY 24D



MATERNAL GRANDDAM



SIRE OF LOT 12-15

MADER JAX 4K

1 January 2022 • MDR 4K • BPG1403686

Homo Polled, Homo Black

	EPDs					Carcass EPDs								
	CE	BW	WW	YW	Milk	MCE	MWW	API	TI	CWT	REA	Fat	Marb	
EPD	9.6	2.9	87.8	133.6	19.5	5.2	63.4	110.4	75.1	35.5	0.95	-0.09	-0.14	
Breed Rank	30	35	15	10	95	35	70	55	20	20	30	90	85	

	Leptin Testing									CE
	BW	205 Wt.	365 Wt.	ADG	WPDA	Leptin	PMCH	IGF2	CRH4	
	73	819	1302	3.02	3.42	CT	AT	CT	CC	☆☆☆

-Another Son of Anarchy calf born at a low 73lb birthweight, and weaning off his first calving dam at 820lbs

-Analyze his pedigree on the bottom side, and you will see the Heavy Hitter crossed Riddler combination, that has worked over and over for us

-His dam worked her butt off on her first calf, maintaining a near perfect udder and a great body score

-This bull is soggy, loose hided, and carries a pile of natural thickness and muscle

-He ranks in the top 30% for CE, and with his smooth shoulder we recommend use on heifers or first calvers

16

TJSC BOONE PICKENS 46C

SIRE: MADER SON OF ANARCHY 144H
LFE BS SHEILA 82A

BROOKING FIREBRAND 6068

DAM: MADER TIMELESS 54H

MADER CAT HOUSE 35D



MATERNAL GRANDSIRE



DAM OF LOT 16

MADER TELLER 14K

2 January 2022 • MDR 14K • BPRS1403689 • 3/4 Blood

Homo Polled, Homo Black

	EPDs					Carcass EPDs								
	CE	BW	WW	YW	Milk	MCE	MWW	API	TI	CWT	REA	Fat	Marb	
EPD	9.0	3.0	96.0	145.5	24.1	5.3	72.1	104.1	75.8	37.6	0.82	-0.6	-0.12	
Breed Rank	35	40	2	2	75	35	25	75	20	15	70	100	80	

Leptin Testing									CE
BW	205 Wt.	365 Wt.	ADG	WPDA	Leptin	PMCH	IGF2	CRH4	
84	931	1421	3.06	3.76	CT	AA	CT	CC	☆☆☆

-Here is a bull that is easy to find when touring the bull pen... with his extra stretch, heavy muscle, thickness, and eye appeal
 -Again, raised on a first calf heifer like most Son of Anarchy calves, he boasts a tremendous spread from an 84lb BW, to a 931lb WW, to a 1421lb YW
 -That ranks him in the top 35% for calving ease, and top 2% for WW and YW
 -His dam is flat out good, she is 1/2 blood female stemming from the prolific Firebrand sire, and backed by our favorite Riddler daughter on the farm, the dam of lot 3
 -This bull will calve easy and add nothing but pounds at weaning for his new owner

17

TJSC BOONE PICKENS 46C

SIRE: MADER SON OF ANARCHY 144H
LFE BS SHEILA 82A

WS PROCLAMATION E202

DAM: MADER OPAL 31H

MADER OPAL 83F



MATERNAL GRANDDAM



LOT 17

MADER WARRIOR 26K

5 January 2022 • MDR 26K • BPG1403695

Homo Polled, Homo Black

	EPDs					Carcass EPDs								
	CE	BW	WW	YW	Milk	MCE	MWW	API	TI	CWT	REA	Fat	Marb	
EPD	9.0	2.5	94.7	142.2	23.5	3.8	70.9	124.0	82.7	41.8	0.93	-0.08	-0.02	
Breed Rank	35	30	3	3	75	55	30	15	3	5	35	95	35	

Leptin Testing									CE
BW	205 Wt.	365 Wt.	ADG	WPDA	Leptin	PMCH	IGF2	CRH4	
80	888	1347	2.87	3.56	CT	AT	CC	CC	☆☆☆

-Heifer bull candidate
 -Just an 80lb BW, he is small skulled, light boned, and smooth through that front third
 -With that said, this bull also carries impressive mass and muscle through that lower quarter and over his top
 -Combine the calving ease Son of Anarchy sire, with his first calving dam, who is sired by the curve bending Proclamation sire, and the calves out of this bull should just pop out
 -This bull is angular in his make-up, travels very freely, and will continue to develop into an admirable herdsire



LOT 17

18

TJSC BOONE PICKENS 46C

SIRE: MADER SON OF ANARCHY 144H
LFE BS SHEILA 82A

LFE HEAVY HITTER 352C

DAM: MADER GODDESS 105H
MADER GODDESS 77D

SIRE OF LOT 16-18



MATERNAL GRANDSIRE

MADER **FIREBALL** 116K*Homo Polled, Hetero Black*

20 January 2022 • MDR 116K • BPG1411324

	EPDs					Carcass EPDs							
	CE	BW	WW	YW	Milk	MCE	MWW	API	TI	CWT	REA	Fat	Marb
EPD	5.3	3.0	84.1	125.9	17.4	0.8	59.5	100.8	71.1	31.9	0.94	-0.09	-0.16
Breed Rank	75	40	20	20	100	90	85	85	45	30	30	80	90

	Leptin Testing					CE
	BW	205 Wt.	365 Wt.	ADG	WPDA	
	87	827	1299	2.95	3.42	

Leptin PMCH IGF2 CRH4

CC AA CC CC

🌸🌸🌸🌸🌸

-A very docile, wide topped, long made bull here
 -His first calving dam calved him unassisted, and weaned him off with an Adj WW of 827lbs
 -105H is among many Heavy Hitters we now have milking in the herd, and we love them for their big body type, strong feet, and functional udders

19

R PLUS 5015C

SIRE: R PLUS YUMA 9087G
MISS R PLUS 3007A

ERIXON RELENTLESS 110D

DAM: RF FLIRT 820F
RUST MISS 5304C

SIRE OF LOT 19



LOT 19

MADER **SEDONA** 97K*Homo Polled, Homo Black Pending*

15 January 2022 • MDR 97K • BPTG1398069

	EPDs										Carcass EPDs			
	CE	BW	WW	YW	Milk	MCE	MWW	API	TI	CWT	REA	Fat	Marb	
EPD	6.8	2.2	76.2	118.9	20.1	1.3	58.2	116.8	70.8	26.1	0.84	-0.10	-0.06	
Breed Rank	60	25	55	35	95	85	90	35	45	55	60	80	55	
						Leptin Testing					CE			
	BW	205 Wt.	365 Wt.	ADG	WPDA	Leptin PMCH IGF2 CRH4								
	90	815	1261	2.79	3.49	PENDING								

-Here is an embryo calf mated from the \$160,000 R Plus Yuma sire, and out of a very proven donor female, RF Flirt 820F
 -This bull is constructed very nice, he is smooth and attractive up front, maintains adequate softness and capacity, and a bull you can really appreciate from hook to pin, and how well he sits down on his hind leg
 -He also carries that ideal blaze face, he will add maternal greatness through his genetic makeup, and should sire calves that are typed right for today's marketplace

20

R PLUS 5015C

SIRE: R PLUS YUMA 9087G

MISS R PLUS 3007A

ERIXON RELENTLESS 110D

DAM: RF FLIRT 820F

RUST MISS 5304C



MATERNAL BROTHER OF LOT 42



MATERNAL GRANDSIRE

MADER PRESCOTT 81K

13 January 2022 • MDR 81K • BPTG1398066

Homo Polled, Homo Black Pending

	EPDs					Carcass EPDs							
	CE	BW	WW	YW	Milk	MCE	MWW	API	TI	CWT	REA	Fat	Marb
EPD	6.8	2.8	83.3	129.1	20.1	1.3	61.8	118.4	74.3	33.1	0.94	-0.10	-0.06
Breed Rank	60	35	25	15	95	85	75	30	25	25	30	80	55

Leptin Testing					CE
BW	205 Wt.	365 Wt.	ADG	WPDA	
89	953	1436	3.02	3.98	★

-A big performance oriented bull here that boasts an Adj WW of 953lbs
 -The Yuma progeny are known for their extra dimension and jam, and this bull will help increase weaning weights, while still adding maternal strength from his prolific dam
 -We recently sold a full sister to these brothers this past fall for \$13,000 to Tandem T Farms
 -If pounds is your business, look no further

21

R PLUS 5015C

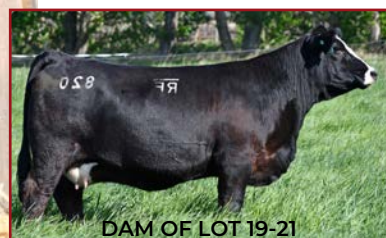
SIRE: R PLUS YUMA 9087G

MISS R PLUS 3007A

ERIXON RELENTLESS 110D

DAM: RF FLIRT 820F

RUST MISS 5304C



DAM OF LOT 19-21



FULL SISTER OF LOT 19-21

MADER KINGMAN 91K

14 January 2022 • MDR 91K • BPTG1398067

Homo Polled, Homo Black Pending

	EPDs					Carcass EPDs							
	CE	BW	WW	YW	Milk	MCE	MWW	API	TI	CWT	REA	Fat	Marb
EPD	6.8	2.8	83.5	129.3	20.1	1.3	61.9	118.5	74.4	32.7	0.93	-0.10	-0.06
Breed Rank	60	35	25	15	95	85	75	30	25	25	35	80	55

Leptin Testing					CE
BW	205 Wt.	365 Wt.	ADG	WPDA	
90	936	1346	2.56	3.75	★

-The third full brother of this trio, and probably the boldest, stoutest made of them
 -You stand behind this bull and he has a lot to offer over that top, and carries great muscling and thickness into that twist and lower quarter
 -Check out the actual performance data on this bull, 89 lb birthweight and a 920lb weaning weight
 -Genetically, these bulls will excel in growth and add maternal strength to their daughters

22

CCR COWBOY CUT 5048Z

SIRE: WS PROCLAMATION E202

WS MISS SUGAR C4

TJSC BOONE PICKENS 46C

DAM: MADER VIOLET 49H

LFE BS VIOLET 641A



SIRE OF LOT 22 & 23



DAM OF LOT 22 & 23

MADER KISS THIS 93K

15 January 2022 • MDR 93K • BPTG1398400

Homo Polled, Homo Black Pending

EPD	EPDs					Carcass EPDs							
	CE	BW	WW	YW	Milk	MCE	MWW	API	TI	CWT	REA	Fat	Marb
Breed Rank	5	10	15	10	40	10	20	1	1	20	80	95	1

-Born 79lbs, weaned off at 893lbs, ranks in the top 5% for CE, top 10% for BW, and top 15% for WW
 -The dam to these two full brothers is a special one, leading off our Ladies Night female sale, selling ½ interest, for \$92,000 to KCH Cattle Co

-She is one of the most ideal females we have ever created and is, and will be a huge part of our operation moving forward

-The dam went undefeated in the show ring as a bred heifer, and as a first calf heifer, recently made the top 5 females at Farmfair Supreme, and top 10 females in the Agribition Supreme
 -This bull is great natured, light boned, big ribbed, and should calve very well

Leptin Testing					CE
BW	205 Wt.	365 Wt.	ADG	WPDA	
79	893	1402	3.18	3.70	☆☆☆

Leptin Testing			
Leptin	PMCH	IGF2	CRH4
PENDING			

23

CCR COWBOY CUT 5048Z

SIRE: WS PROCLAMATION E202

WS MISS SUGAR C4

TJSC BOONE PICKENS 46C

DAM: MADER VIOLET 49H

LFE BS VIOLET 641A



DAM OF LOT 22 & 23



SISTER OF LOT 22 & 23

MADER DECLARATION 114K

20 January 2022 • MDR 114K • BPTG1398420

Homo Polled, Homo Black Pending

EPD	EPDs					Carcass EPDs							
	CE	BW	WW	YW	Milk	MCE	MWW	API	TI	CWT	REA	Fat	Marb
Breed Rank	15	20	2	1	40	20	10	1	1	4	25	90	1

-A full brother to the bull above, and two bulls that are extremely similar in their type and kind
 -With an identical genetic makeup, the same great comments apply to both of these bulls especially when describing their great uddered, strong footed, huge volumed, and attractive dam
 -The sire Proclamation, is an AI sire heavily used for his off the charts calving ease, while still offering a ton of performance, milk, docility, and all-purpose index

-So similar built to his brother above, you will always find one of these bulls licking your hand while touring the bulls, and appreciate them for their wide tops, big nuts, and strength on their feet and legs
 -A maternal sister just sold for \$16,000, and a full sister will be our son's show heifer this upcoming year

Leptin Testing					CE
BW	205 Wt.	365 Wt.	ADG	WPDA	
93	975	1484	3.18	3.94	☆☆☆

Leptin Testing			
Leptin	PMCH	IGF2	CRH4
PENDING			

24

NCB COBRA 47Y

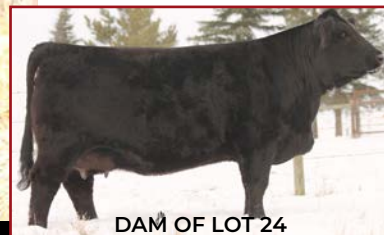
SIRE: MADER WALK THIS WAY 224B
MADER P IRON SUGAR 7X

SVS CAPTAIN MORGAN 11Z

DAM: RF CERTAINLY FLIRTIN 525C
RF CERTAINLY FLIRTIN 202Z



SIRE OF LOT 24



DAM OF LOT 24



LOT 24

MADER ROBIN HOOD 156K

3 February 2022 • MDR 156K • BPTG1398080

Homo Polled, Homo Black Pending

EPD	EPDs					Carcass EPDs							
	CE	BW	WW	YW	Milk	MCE	MWW	API	TI	CWT	REA	Fat	Marb
Breed Rank	35	30	15	5	85	65	55	25	10	15	55	80	30
Leptin Testing													
Leptin PMCH IGF2 CRH4													
PENDING													
CE													
☆☆☆													

-Here is a bull we are very high on, from his superior pedigree, to his great physical attributes, he puts it all together
-Piles of hair, stoutness, muscle definition, an attractive look to him, sound footed, and has the pieces to really make an impact on any herd
-His dam is a daughter of one of the most prolific cows in the industry, RF 202Z, and he is sired by the breed leading Mader Walk This Way
-A modest birthweight with an exceptional growth rate, Adj WW of 914lbs, Adj YW of 1472lbs
-We feel he is the right combination of calving ease and performance, to really sire a group of calves that will top the charts on both pounds, and maternal excellence

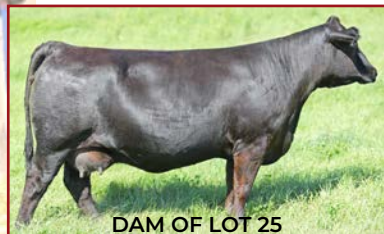
25

NCB COBRA 47Y

SIRE: MADER WALK THIS WAY 224B
MADER P IRON SUGAR 7X

NCB COBRA 47Y

DAM: LFE BS MARY 113B
LFE BS MARY 172Z



DAM OF LOT 25



LOT 25

MADER RUMBLE 135K

26 January 2022 • MDR 135K • BPTG1398076

Homo Polled, Homo Black Pending

EPD	EPDs					Carcass EPDs							
	CE	BW	WW	YW	Milk	MCE	MWW	API	TI	CWT	REA	Fat	Marb
Breed Rank	124	-0.2	76.3	115.9	25.0	9.0	63.2	134.6	78.0	25.4	0.76	-0.10	0.07
Leptin Testing													
Leptin PMCH IGF2 CRH4													
PENDING													
CE													
☆☆☆													

-Another very high caliber Walk This Way son, that also expresses a great hair coat, lots of angularity, a strong foot, and lots of body capacity
-You will note this bull is double bred Cobra, a mission we purposely attempted as the Cobra cattle continue to excel on both females and bulls, with ideal udder and foot structures, and their ability to produce the right kind
-His dam was purchased through the prestigious "Cobra Event," and she entered the donor pen quickly, producing 4 daughters that have sold through our Ladies Night sale, and 3 sons that have been standouts through this very sale
-He ranks in the top 10% for CE, and the top 4% for BW



MATERNAL BROTHER OF LOT 25

26

BGS/BM CAPTAIN SCREAM 63D

SIRE: SVS BETTS 808F

WFL RED SAGE 506C

CG BLACK NUGGET 25N

DAM: CG BLACK OPAL 652S

CG BLACK OPAL 214 M



SIRE OF LOT 26



FULL BROTHER TO LOT 26

MADER PEAK PERFORMANCE

19 January 2022 • MDR 110K • BPTG1398419

Homo Polled, Homo Black Pending

	EPDs					Carcass EPDs							
	CE	BW	WW	YW	Milk	MCE	MWW	API	TI	CWT	REA	Fat	Marb
EPD	6.7	5.1	87.5	124.3	24.7	5.5	68.5	94.9	70.2	302	1.13	-0.12	-0.23
Breed Rank	60	80	15	25	70	30	45	95	50	35	3	30	100

	Leptin Testing					CE
	BW	205 Wt.	365 Wt.	ADG	WPDA	
	86	916	1356	2.75	3.78	★★★

Leptin Testing				PENDING
Leptin	PMCH	IGF2	CRH4	

-This bull is the meat wagon in the pen, expressing so much muscle, top end, and thickness throughout
 -Moderate in his stature, but mighty in his design, all while being very athletic from the ground up
 -The Opal 652S cow comes up several times in any catalogue we build, a cow that will go down in history here as one of the most influential females
 -The udders, feet, and easy fleshing ability in every daughter or granddaughter from the Opal line, are second to none, and the sons have been absolute studs
 -A full brother sold last year to Blueridge Colony as a feature bull

27

RF CAPACITY 742E

SIRE: SVS DYNASTY 915G

WFL RED SAGE 506C

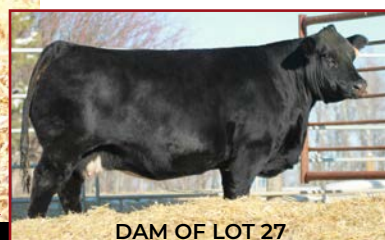
CG BLACK NUGGET 25N

DAM: CG BLACK OPAL 652S

CG BLACK OPAL 214 M



SIRE OF LOT 27



DAM OF LOT 27

MADER SURRENDER 180K

13 February 2022 • MDR 180K • BPTG1398084

Homo Polled, Homo Black Pending

	EPDs					Carcass EPDs							
	CE	BW	WW	YW	Milk	MCE	MWW	API	TI	CWT	REA	Fat	Marb
EPD	5.7	5.0	83.5	117.6	25.3	3.7	67.1	104.9	71.5	31.0	1.00	-0.11	-0.07
Breed Rank	70	75	25	40	65	60	50	70	40	35	20	40	60

	Leptin Testing					CE
	BW	205 Wt.	365 Wt.	ADG	WPDA	
	93	937	1467	3.31	4.05	★★★

Leptin Testing				PENDING
Leptin	PMCH	IGF2	CRH4	

-Another feature son out of the late "Opal 652S" donor
 -Here is a bull that stands out for his width over top, his big pin spread, and the amount of lower shape he carries through that rib and stifle region
 -We have been very impressed in the Dynasty progeny, and the maternal strength you will get when you combine the great Sage 506C and Opal 652S will be very rewarding
 -A power bull with a 937lb Adj WW, and a 1467lb Adj YW

28

NCB COBRA 47Y

SIRE: MADER WALK THIS WAY 224B
MADER P IRON SUGAR 7X

CG BLACK NUGGET 25N

DAM: CG BLACK OPAL 652S

CG BLACK OPAL 214 M



SIRE OF LOT 28



MATERNAL BROTHER OF LOT 28

MADER MIDNIGHT LEGEND 157K

3 February 2022 • MDR 157K • BPTG1398081

Homo Polled, Homo Black Pending

EPD	EPDs					Carcass EPDs							
	CE	BW	WW	YW	Milk	MCE	MWW	API	TI	CWT	REA	Fat	Marb
Breed Rank	9.4	1.7	82.6	122.4	28.3	6.4	69.6	130.5	80.5	30.8	0.87	-0.11	0.11
	30	20	25	30	45	20	35	10	4	35	55	45	10

Leptin Testing					CE	
BW	205 Wt.	365 Wt.	ADG	WPDA	Leptin PMCH	IGF2 CRH4
83	825	1347	3.26	3.72	PENDING	☆☆☆

-Another Walk This Way son that could be utilized in the heifer pen or on young cows, with an 83lb BW, and ranks in the top 30% for CE and 20% for BW
 -When combining the Ironsugar 7X donor with Opal 652S, we feel you really have something special when it comes to retaining daughters in the herd
 -A bull that is very fluid when put in motion, he has extra hair, and extra softness throughout

29

WELSH'S WARSAW 312Z

SIRE: HART STATE OF WAR 056C
HART MISS 102A

R PLUS SWAYZE 7083E

DAM: NUG LONDON 53H

NUG INDIGO 545C



SIRE OF LOT 29



MATERNAL GRANDSIRE

MADER BOULEVARD 67K

12 January 2022 • MDR 67K • BPG1411322

Homo Polled, Homo Black

EPD	EPDs					Carcass EPDs							
	CE	BW	WW	YW	Milk	MCE	MWW	API	TI	CWT	REA	Fat	Marb
Breed Rank	11.9	1.8	90.4	140.0	25.7	5.3	70.9	132.4	81.7	39.1	0.86	-0.09	-0.03
	15	20	10	5	65	35	30	5	3	10	55	85	40

Leptin Testing					CE	
BW	205 Wt.	365 Wt.	ADG	WPDA	Leptin PMCH	IGF2 CRH4
84	796	1311	3.22	3.42	CC	AT CC CC

-Heifer bull candidate
 -84lb BW, ranks in the top 15% for CE and top 20% for BW, is small headed and smooth shouldered
 -These Hart State of War calves all come easy, and we have been very impressed with the growth on first calvers, noted when you see this guy also ranks in the top 10% for WW and 5% for YW
 -His dam was purchased out of the Jenna/Flirt sale as our pick of the bred heifers, and she did not disappoint on her first calf

30

LFE HEAVY HITTER 352C

SIRE: MADER PEARL HARBOUR 149F

LFE BS SHEILA 82A

LFE THE RIDDLER 323B

DAM: MADER BLACKGOLD 312D

MADER BLACKGOLD 82A



SIRE OF LOT 30 - 35



MATERNAL BROTHER OF LOT 30

MADER FRONTIER 149K

31 January 2022 • MDR 149K • BPG1403738

Homo Polled, Homo Black

	EPDs					Carcass EPDs							
	CE	BW	WW	YW	Milk	MCE	MWW	API	TI	CWT	REA	Fat	Marb
EPD	3.9	4.0	89.0	137.8	20.4	0.9	64.9	112.0	76.2	41.2	1.01	-0.09	-0.04
Breed Rank	85	60	10	10	95	90	60	50	15	10	15	80	45

Leptin Testing									CE
BW	205 Wt.	365 Wt.	ADG	WPDA	Leptin	PMCH	IGF2	CRH4	
95	907	1409	3.14	3.92	CT	TT	CC	CC	☆☆

-A performance oriented black bull here that weaned off the cow at 815lbs
 -Big powerful Riddler dam backing this bull, and her last years calf sold through Friday Night Lights sale for \$11,000, and her son the year before sold to Standoff Colony for \$10,000
 -Dam has very nice udder with good teat size, has problem free feet, and seems to milk heavy bringing in big one's year after year

31

LFE HEAVY HITTER 352C

SIRE: MADER PEARL HARBOUR 149F

LFE BS SHEILA 82A

WLB BLAZE ON 365C 361E

DAM: MADER DUSTY ROSE 138G

FGAF DUSTY ROSE 117D



DAM OF LOT 31



MATERNAL BROTHER OF LOT 31

MADER CHOPPER 72K

12 January 2022 • MDR 72K • BPG1403712

Homo Polled, Homo Black

	EPDs					Carcass EPDs							
	CE	BW	WW	YW	Milk	MCE	MWW	API	TI	CWT	REA	Fat	Marb
EPD	6.4	3.9	83.3	124.8	17.6	3.2	59.3	112.5	71.9	38.3	0.92	-0.09	-0.08
Breed Rank	65	55	25	25	100	65	85	45	40	10	40	80	60

Leptin Testing									CE
BW	205 Wt.	365 Wt.	ADG	WPDA	Leptin	PMCH	IGF2	CRH4	
86	863	1329	2.91	3.61	CC	TT	CC	CC	☆☆

-Smooth made bull here with a small head and lighter bone
 -A bull that would work well on some first or second calvers while still maintaining some performance and pounds in his offspring
 -An actual weaning weight of 815lbs, and he ranks in the top 25% for WW and YW
 -The Pearl Harbour sons have been among the last few years and this guy fits right in

32

LFE HEAVY HITTER 352C

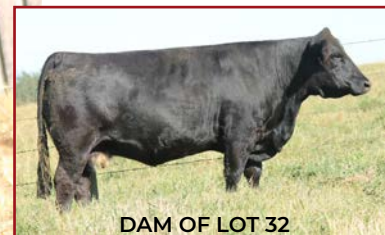
SIRE: MADER PEARL HARBOUR 149F

LFE BS SHEILA 82A

NCB COBRA 47Y

DAM: MCINTOSH CLEOPATRA 21A

IPU 56U MS RED LINER 242X



DAM OF LOT 32



LOT 32



MATERNAL BROTHER OF LOT 32

MADER ROLLING STONE 147K

28 January 2022 • MDR 147K • BPG1403736

Homo Polled, Hetero Black

EPD	EPDs					Carcass EPDs							
	CE	BW	WW	YW	Milk	MCE	MWW	API	TI	CWT	REA	Fat	Marb
Breed Rank	60	40	10	10	85	50	50	20	10	10	20	85	40

Leptin Testing					CE			
BW	205 Wt.	365 Wt.	ADG	WPDA	Leptin	PMCH	IGF2	CRH4
87	950	1446	3.10	4.01	CT	TT	CT	CC

-A pen favorite here with that extended front end and presence, he is massive through his rib shape, stout over his top, and very sound on the move

-His Cobra dam speaks very true when you analyze her production record, including a feature son that recently sold to Klaudt Ranches

-If you want to add hair, length of body, extra thickness, and structural correctness, you must find this bull sale day

-He ranks in the top 10% for WW and YW

33

LFE HEAVY HITTER 352C

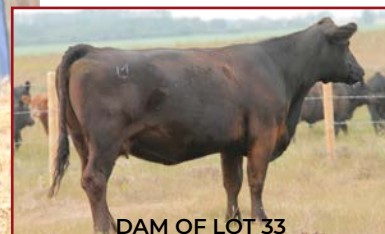
SIRE: MADER PEARL HARBOUR 149F

LFE BS SHEILA 82A

LFE THE RIDDLER 323B

DAM: MADER BLACKGOLD 72F

MADER BLACKGOLD 8B



DAM OF LOT 33



MATERNAL BROTHER OF LOT 33

MADER CRAFTSMAN 100K

16 January 2022 • MDR 100K • BPG1403719

Homo Polled, Homo Black

EPD	EPDs					Carcass EPDs							
	CE	BW	WW	YW	Milk	MCE	MWW	API	TI	CWT	REA	Fat	Marb
Breed Rank	75	65	10	10	100	65	70	45	15	10	25	70	40

Leptin Testing					CE			
BW	205 Wt.	365 Wt.	ADG	WPDA	Leptin	PMCH	IGF2	CRH4
87	882	1434	3.45	3.94	CT	AT	CT	CC

-A real pound producing type of bull here with explosive muscle shape, width of quarter, and stoutness over that top and loin

-A modest birthweight of 87lbs, sprouting into an actual weaning weight of 840lbs

-Loads of maternal offered here as well, when you combine the Sheila 82A donor, onto the Blackgold cow family, offering improved udder and foot quality

-The Riddler females are among our favorite sire groups in the cow herd here, out producing themselves year after year

34

LFE HEAVY HITTER 352C

SIRE: MADER PEARL HARBOUR 149F

LFE BS SHEILA 82A

MR HOC BROKER

DAM: RCR MS KAY 10E

RCR MS KELTIE 3C



LOT 34



FULL SISTER OF LOT 34



FULL SISTER OF LOT 34

MADER FREEDOM 82K

13 January 2022 • MDR 82K • BPG1419720

Homo Polled, Homo Black

	EPDs					Carcass EPDs				
	CE	BW	WW	YW	Milk	MCE	MWW	API	TI	CWT
EPD	6.2	3.1	78.3	116.6	17.8	2.9	56.9			30.1
Breed Rank	65	40	45	40	100	70	95			35

Leptin Testing					CE			
Leptin	PMCH	IGF2	CRH4		CC	AT	CT	CC
BW	205	365	ADG	WPDA				
Wt.	Wt.	Wt.						
83	833	1310	2.64	3.51				

- Stout, masculine, and soggy throughout sum up this bull
- Nice splash of white on his face, very complete and thick in his makeup, very sound on his skeleton
- Dam is a strong black baldie Broker daughter, that milks heavy, and is easy to analyze
- Two most recent maternal sisters were both selected to sell in our Ladies Night female sale, and have been well accepted

35

LFE HEAVY HITTER 352C

SIRE: MADER PEARL HARBOUR 149F

LFE BS SHEILA 82A

WFL WESTCOTT 24C

DAM: KCH I'M A FLIRT 923G

RF CERTAINLY FLIRTIN 525C



PATERNAL GRANDSIRE



SIRE OF LOT 35

MADER PENDELTON 141K

28 January 2022 • MDR 141K • BPG1420454

Homo Polled, Homo Black

	EPDs					Carcass EPDs				
	CE	BW	WW	YW	Milk	MCE	MWW	API	TI	CWT
EPD	4.6	4.4	87.1	133.2	15.1	-0.8	58.6			41.6
Breed Rank	80	65	15	10	100	100	90			5

Leptin Testing					CE			
Leptin	PMCH	IGF2	CRH4		CC	AT	CC	CG
BW	205	365	ADG	WPDA				
Wt.	Wt.	Wt.						
92	887	1353	2.91	3.68				

- A moderate framed beef machine here, with a ton of rib shape and volume
- The influence of Pearl Harbour and Westcott push this bull to be a dominant force as a cow bull, generating extra jam and performance in his offspring
- His dam stems back to the matron donor, RF 525C donor, who is a direct daughter of Captain Morgan and RF 202Z
- A royally bred bull here that is a tick younger in the pen, but stacks up to the big boys in terms of type and kind

36

LFE HEAVY HITTER 352C

SIRE: MADER PEARL HARBOUR 149F

LFE BS SHEILA 82A

BROOKING BANK NOTE 4040

DAM: MADER ENVY 13E

WHEATLAND ENVY 281Z



MATERNAL SISTER OF LOT 36



MATERNAL BROTHER OF LOT 36

MADER THE JUNGLE 153K

3 February 2022 • MDR 153K • BPRS1403740

Homo Polled, Homo Black

EPD	EPDs					Carcass EPDs							
	CE	BW	WW	YW	Milk	MCE	MWW	API	TI	CWT	REA	Fat	Marb
Breed Rank	45	20	75	60	100	40	100	60	80	55	100	100	15

Leptin Testing					CE			
BW	205 Wt.	365 Wt.	ADG	WPDA	Leptin	PMCH	IGF2	CRH4
84	824	1264	2.75	3.52	CT	AT	TT	CG

-A ¾ blood bull

-Influenced by two great families, Sheila 82A and Envy 281Z

-A moderate framed bull offering extra depth of body and softness, yet is still very smooth through his shoulder and small in his skull

-Maybe not your bomb proof heifer bull, but if you had bigger heifers or some first calvers that you're looking to get bred, this bull fits the bill

37

MRL DISCOVERY 21A

SIRE: LFE HEAVY HITTER 352C

LFE BS JULI 641X

HTP SVF IN DEW TIME

DAM: J ANCHOR DEW TIME 6X

J ANCHOR MISS SHREK 2U



DAM OF LOT 37



MATERNAL SISTER OF LOT 37

MADER CANNONBALL 197K

25 February 2022 • MDR 197K • BPG1403756

Homo Polled, Homo Black

EPD	EPDs					Carcass EPDs							
	CE	BW	WW	YW	Milk	MCE	MWW	API	TI	CWT	REA	Fat	Marb
Breed Rank	25	15	60	50	100	30	100	45	35	30	75	95	15

Leptin Testing					CE			
BW	205 Wt.	365 Wt.	ADG	WPDA	Leptin	PMCH	IGF2	CRH4
88	920	1349	2.68	3.65	TT	AT	CC	CC

-Another very smooth made bull with a small head, light bone, and smooth shoulder

-Heavy Hitter was never used as a heifer bull but has averaged 84lbs at birth on his calves to date, and when you cross in the In Dew Time sire on the bottom side, you really kick up the calving ease

-He ranks in the top 25% for CE, and top 15% for BW

-One of the youngest bulls in the sale, however a bull that is very eye appealing as you go through the offering

38

MRL DISCOVERY 21A

SIRE: LFE HEAVY HITTER 352C

LFE BS JULI 641X

BGS/BM CAPTAIN SCREAM 63D

DAM: KCH VIOLET 910G

LFE BS VIOLET 641A



MATERNAL SISTER OF LOT 38



SIRE OF LOT 38

MADER FRIEND ZONE 175K

11 February 2022 • MDR 175K • BPG1403749

Homo Polled, Homo Black

	EPDs					Carcass EPDs							
	CE	BW	WW	YW	Milk	MCE	MWW	API	TI	CWT	REA	Fat	Marb
EPD	5.8	3.3	80.5	124.8	11.1	4.5	51.4	99.42	70.5	37.5	0.86	-0.09	-0.06
Breed Rank	70	45	35	25	100	45	100	90	45	15	55	90	55

Leptin Testing					CE			
BW	205 Wt.	365 Wt.	ADG	WPDA	Leptin	PMCH	IGF2	CRH4
88	795	1307	3.20	3.53	TT	AT	CC	CC

-A maternal sister just sold in our Ladies Night sale for \$9000 to Cory Campbell
 -This bull offers a lot in terms of his dimension and angularity, is stout based, and really very growthy for his age
 -The Heavy Hitter progeny continue to be some of our favorites, whether you're talking about his soggy sons, or his productive daughters
 -The Violet cow family is one of our favorites around the farm, with increased udder and foot quality

39

MRL DISCOVERY 21A

SIRE: LFE HEAVY HITTER 352C

LFE BS JULI 641X

LFE THE RIDDLER 323B

DAM: MADER JUST FRIENDS 22D

WHEATLAND ENVY 281Z



MATERNAL BROTHER OF LOT 39



LOT 39



MATERNAL BROTHER OF LOT 39

MADER GET LUCKY 166K

6 February 2022 • MDR 166K • BPG1403745

Homo Polled, Hetero Black

	EPDs					Carcass EPDs							
	CE	BW	WW	YW	Milk	MCE	MWW	API	TI	CWT	REA	Fat	Marb
EPD	7.0	3.0	77.0	122.6	13.7	4.9	52.2	110.6	71.8	33.0	0.88	-0.09	0.02
Breed Rank	55	40	50	30	100	40	100	55	40	25	50	90	25

Leptin Testing					CE			
BW	205 Wt.	365 Wt.	ADG	WPDA	Leptin	PMCH	IGF2	CRH4
87	882	1359	2.98	3.79	CC	AT	TT	CC

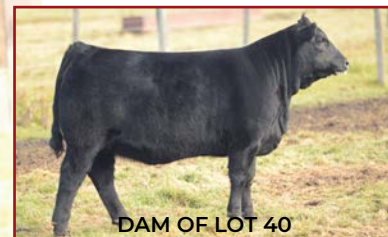
-We have learned to rely on the 22D cow to bring in one of the best every year
 -Her first calf was a standout heifer that was featured in the Cobra event sale, and 3 recent full brothers to this bull, have all sold through this sale from \$7000-12,000 as top bulls
 -This bull is typical of Heavy Hitter crossed with the 22D cow, huge in his pin spread and width of quarter, stout over that top, very quiet in his temperament, and very complete

40

LFE THE RIDDLER 323B

SIRE: MADER THE NATIONAL 43E
LFE BS VIOLET 641A

HF KODIAK 5R

DAM: RIVERSTONE BLACKBIRD 6D
HIGHLAND BLACKBIRD 5X

DAM OF LOT 40



MATERNAL BROTHER OF LOT 40

MADER RIVERSTONE 194K

23 February 2022 • MDR 194K • BPRS1419726 • 1/2 Blood

Homo Polled, Hetero Black

	EPDs					Carcass EPDs				
	CE	BW	WW	YW	Milk	MCE	MWW	API	TI	CWT
EPD	12.5	1.0	79.5	129.6	19.9	7.3	59.6			44.9
Breed Rank	10	10	40	15	95	15	85			2

Leptin Testing					Carcass EPDs				
Leptin	PMCH	IGF2	CRH4		REA	Fat	Marb		
87	987	1475	3.05	4.03	0.62	-0.02	0.14		

CE
☆☆

-Here is a bull you will want to find sale day, and will appreciate him for his overall balance, the great volume he expresses, and the structural correctness he offers
 -The 6D cow is a power female, stemming from the great HF Kodiak sire, making this bull a 1/2 blood
 -The first calf this cow had was a feature Walk This Way son selling to Klautd Ranches for \$13,000, and was also one of my favorite bulls in the pen
 -He ranks in the top 10% of the breed for CE and BW, while still maintaining performance with a 987 Adj WW

41

LFE THE RIDDLER 323B

SIRE: MADER THE NATIONAL 43E
LFE BS VIOLET 641A

MADER FREESTYLE 92B

DAM: MADER PRIDE 165G
ANGUS/ANGUS

MATERNAL BROTHER OF LOT 42



LOT 41

MADER KINGS PRIDE 181K

15 February 2022 • MDR 181K • BPRS1419727 • 3/4 Blood

Homo Polled, Hetero Black

	EPDs					Carcass EPDs				
	CE	BW	WW	YW	Milk	MCE	MWW	API	TI	CWT
EPD	10.7	2.2	82.1	132.6	21.8	6.4	62.8			39.2
Breed Rank	2-	25	30	15	85	20	70			10

Leptin Testing					Carcass EPDs				
Leptin	PMCH	IGF2	CRH4		REA	Fat	Marb		
82	898	1386	3.05	3.73	0.70	-0.06	0.03		

CE
☆☆☆

-He will definitely work in the heifer pen or to lower birthweights
 -Light boned, smooth shouldered, small headed, and just an 82lb BW, ranking him in the top 25% for CE and BW
 -Just a splash of white on his forehead, he travels around the pen with ease, and reminds us a lot of The National with his expressive rib shape

42

LFE THE RIDDLER 323B

SIRE: MADER THE NATIONAL 43E

LFE BS VIOLET 641A

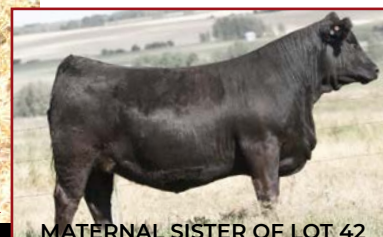
LFE HEAVY HITTER 352C

DAM: MADER SUGAR 515F

MADER SUGAR CRUSH 213B



DAM OF LOT 42



MATERNAL SISTER OF LOT 42

MADER **JUSTIFY** 182K

15 February 2022 • MDR 182K • BPG1403752

Homo Polled, Hetero Black

	EPDs					Carcass EPDs							
	CE	BW	WW	YW	Milk	MCE	MWW	API	TI	CWT	REA	Fat	Marb
EPD	9.1	2.3	86.2	138.3	18.2	7.1	61.3	122.7	78.8	40.2	1.00	-0.07	0.02
Breed Rank	35	25	15	10	100	15	80	20	10	10	20	100	25

Leptin Testing					CE			
BW	205 Wt.	365 Wt.	ADG	WPDA	Leptin	PMCH	IGF2	CRH4
84	827	1304	2.98	3.57	TT	AT	CT	CC

-A stacked pedigree utilizing National and his great Violet 641A dam, and crossing them onto Heavy Hitter and the Ironsugar 7X cow family
 -National stamps his progeny with great presence, so much rib shape and body capacity, a good round made hip, and lots of correctness on their feet and legs
 -This bull again is younger in the pen, but he performs with the big guys, and will continue to mature into a real nice herdbull
 -Would work well on heifers if desired

43

LFE THE RIDDLER 323B

SIRE: MADER THE NATIONAL 43E

LFE BS VIOLET 641A

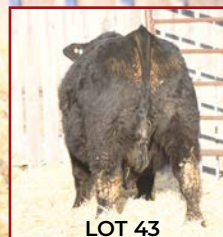
LFE HEAVY HITTER 352C

DAM: MADER KITTY CAT 76G

MADER CAT HOUSE 35D



DAM OF LOT 43



LOT 43



MATERNAL BROTHER OF LOT 43

MADER **DALLAS** 185K

17 February 2022 • MDR 185K • BPG1403753

Homo Polled, Hetero Black

	EPDs					Carcass EPDs							
	CE	BW	WW	YW	Milk	MCE	MWW	API	TI	CWT	REA	Fat	Marb
EPD	8.4	3.2	91.8	147.9	16.8	6.6	62.7	123.9	80.9	46.4	1.05	-0.07	0.01
Breed Rank	40	40	10	2	100	20	70	15	4	2	10	95	25

Leptin Testing					CE			
BW	205 Wt.	365 Wt.	ADG	WPDA	Leptin	PMCH	IGF2	CRH4
86	894	1337	2.77	3.59	CT	AT	CT	CG

-A bull heavily influenced by some of the top bulls we have used... National, Heavy Hitter, Riddler, and Cobra
 -Very attractive in his head and neck design, bold through his forerib muscle pattern, and very sound when set in motion
 -His young dam is another great Heavy Hitter daughter, stemming back to the Cat House 35D female, a favorite Riddler cow, and the dam of Lot 3

44

LFE THE RIDDLER 323B

SIRE: MADER THE NATIONAL 43E

LFE BS VIOLET 641A

WHEATLAND BULL 680S

DAM: MADER BLACKGOLD 139A

MADER P BLACKGOLD 110S



MATERNAL BROTHER OF LOT 44



MATERNAL SISTER OF LOT 44

MADER **NEWSCAST** 202K

9 March 2022 • MDR 202K • BPG1403758

Homo Polled, Homo Black

EPD	EPDs										Carcass EPDs		
	CE	BW	WW	YW	Milk	MCE	MWW	API	TI	CWT	REA	Fat	Marb
Breed Rank	7.2	3.6	82.3	132.9	22.2	3.7	63.4	119.1	73.7	43.7	1.13	-0.08	-0.04
	55	50	30	10	85	60	70	25	25	3	3	95	45

Leptin Testing										CE
BW	205 Wt.	365 Wt.	ADG	WPDA	Leptin	PMCH	IGF2	CRH4		
90	922	1332	2.56	3.55	TT	TT	CC	CC		☆☆

-The youngest bull in the offering being a March 9th born
 -The Blackgold cow family has been very influential, and this guy would be the third consecutive bull to sell from his dam, including last years feature son that sold to Fletcher Cattle Co
 -He is wide based, hairy, has lots to offer over his top, is a very attractive and eye appealing bull, and will add pounds at weaning while maintaining adequate calving ease



Reference Dam

SVF STEEL FORCE S701

SIRE: MR HOC BROKER

JM BF H2S

OLF ODIN U5

DAM: DESTINY ODIN SHEA

DESTINY BUCKEYE SHEA



DAUGHTER OF DARLIN'



SON OF DARLIN'

IRCC **DARLIN'** 613D

16 January 2016 • IRCC 613D • PG1175887

Homo Polled

EPD	EPDs										Carcass EPDs		
	CE	BW	WW	YW	Milk	MCE	MWW	API	TI	CWT	REA	Fat	Marb
Breed Rank	7.3	3.0	87.4	124.8	28.6	3.3	72.3	107.8	76.7	20.2	0.89	-0.09	-0.07
	55	40	15	25	45	65	25	65	15	80	45	75	60

BW	205 Wt.	365 Wt.
82	608	

IRCC Darlin' has wrote her own page in history this year. Selling high dollar sons and daughters for the past couple years, her progeny have dominated the show ring this fall, winning both Champion Simmental Female & Bull along with many division champions. We are just starting to see the effects this donor female will have on the Simmental breed and we are proud to call her ours!

45

SVS BROOKS 669D

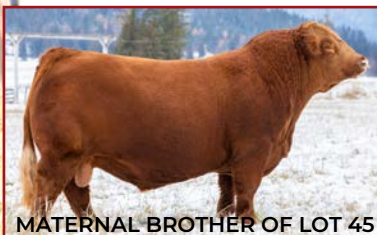
SIRE: SVS TYCOON 841F

SVS RED ANNIE 411B

MR HOC BROKER

DAM: IRCC DARLIN' 613D

DESTINY ODIN SHEA



MATERNAL BROTHER OF LOT 45



MATERNAL BROTHER OF LOT 45



LOT 45

MADER INFLUENCE 104K

16 January 2022 • MDR 104K • PTG1398072

Homo Polled

EPD	EPDs					Carcass EPDs							
	CE	BW	WW	YW	Milk	MCE	MWW	API	TI	CWT	REA	Fat	Marb
Breed Rank	65	50	2	5	35	45	4	60	5	55	25	35	85

Leptin Testing					CE	
Leptin	PMCH	IGF2	CRH4		★	★
82	988	1441	2.83	3.99	PENDING	

-2 highlight sons sired by the well known Tycoon, and the very popular Darlin' 613D donor cow
 -In a few short years, the Darlin' donor has created her own legacy within the breed and continues to carve her own path forward with producing exceptional progeny
 -One maternal brother to these 3 bulls was Mader Walk the Line who sold for \$280,000 to Canadian Sires and KT Ranches in FNL
 -A full sister to Walk the Line then demanded \$60,000, another sister \$30,000 in the same sale
 -These 2 full brothers type so similar, they are very sound on their skeletal, they have added neck extension, are smooth jointed, and are very deep sided, dark red bulls
 -935lb actual weaning weight, and ranking in the top 5% for WW and YW

46

SVS BROOKS 669D

SIRE: SVS TYCOON 841F

SVS RED ANNIE 411B

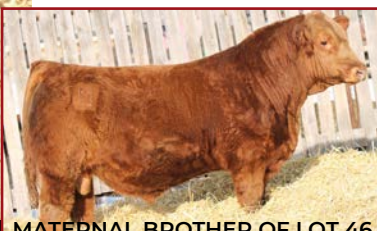
MR HOC BROKER

DAM: IRCC DARLIN' 613D

DESTINY ODIN SHEA



MATERNAL BROTHER OF LOT 46



MATERNAL BROTHER OF LOT 46



LOT 46

MADER MAGNATE 102K

16 January 2022 • MDR 102K • PTG1398417

Homo Polled

EPD	EPDs					Carcass EPDs							
	CE	BW	WW	YW	Milk	MCE	MWW	API	TI	CWT	REA	Fat	Marb
Breed Rank	63	50	1	3	35	45	2	75	10	45	15	30	100

Leptin Testing					CE	
Leptin	PMCH	IGF2	CRH4		★	★
82	980	1420	2.75	3.99	PENDING	

-A pair of brothers that are going to be absolute female makers, passing on their dam's ideal udder structure and teat size, superior foot quality, angularity, great hair type, and functionality
 -A maternal sister, Mader Darlin' 4H, was recently declared Supreme Champion Female at both Stockade Roundup and Farmfair International, and was also a top 10 finalist in the Agribition Supreme
 -2 other maternal sisters were shown as bred heifers this past fall declaring wins such as the Overall Champion Female at the Jr show at both Farmfair and Agribition, and one won the First Lady Classic at Agribition and also made the top 10 in the Supreme
 -There is strength in the blood of these bulls, and we feel either of these two full brothers will be successful breeding pieces for their new owners and design the right type of progeny
 -945lb actual weaning weight, ranking in the top 3% for WW and YW

47

LFE BLOCKBUSTER 3011C

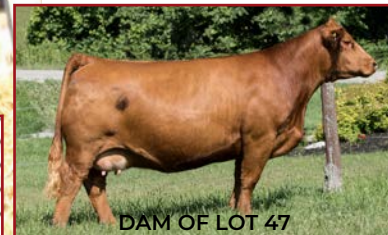
SIRE: LFE HALL PASS 851G

LFE RS COCOA 658C

MR HOC BROKER

DAM: IRCC DARLIN' 613D

DESTINY ODIN SHEA



DAM OF LOT 47



LOT 47



MATERNAL SISTER OF LOT 47

MADER/ERIXON FIRE ME UP 148K

29 January 2022 • MDR 148K • PG1406292

Homo Polled

	EPDs					Carcass EPDs							
	CE	BW	WW	YW	Milk	MCE	MWW	API	TI	CWT	REA	Fat	Marb
EPD	6.5	4.6	86.1	126.8	25.6	2.6	68.7	109.9	73.6	26.5	0.91	-0.10	-0.08
Breed Rank	65	70	15	20	65	75	40	55	30	55	40	65	60

Leptin Testing							
Leptin	PMCH	IGF2	CRH4		CT	AT	CC
82	937	1383	2.79	3.87			

CE
☆☆

-Here is the third Darlin' calf on offer, and he was the natural calf raised on the cow
 -Just about a February born bull, one who offers a pile of natural muscle definition and width over that top
 -Like his brothers and all the siblings produced, we really love the soundness and functionality these Darlin' progeny express
 -A maternal brother, Mader Big Energy, was purchased in our 2022 bull sale, and was successfully shown this fall declaring Champion Simmental bull at both Farmfair and Agribition, making the top standings in both supremes
 -Semen on both Walk The Line and Big Energy just demanded between \$300-500 a dose at the NYR sale, here is your opportunity to purchase one of 3 brothers and write your own success story
 -850lb actual weaning weight, and ranks in top 20% for WW and YW
 CO-OWNED WITH ERIXON SIMMENTALS

48

LFE BLOCKBUSTER 3011C

SIRE: LFE HALL PASS 851G

LFE RS COCOA 658C

RUST RIO GRANDE 7022 ET

DAM: MADER LADY 35G

MADER LADY FEVER 17C



MATERNAL BROTHER OF LOT 48



DAM OF LOT 48

MADER HOME GAME 24K

4 January 2022 • MDR 24K • PG1403694

Homo Polled

	EPDs					Carcass EPDs							
	CE	BW	WW	YW	Milk	MCE	MWW	API	TI	CWT	REA	Fat	Marb
EPD	4.6	5.5	83.7	128.4	20.9	-0.5	62.7			32.9	0.96	-0.10	-0.13
Breed Rank	80	85	25	20	90	95	70			25	25	70	80

Leptin Testing							
Leptin	PMCH	IGF2	CRH4		CC	AT	CC
86	810	1418	3.80	3.79			

CE
☆☆

-A big powerhouse bull that offers so much volume and capacity through that middle third
 -Stand behind this bull, the amount of rib shape, top, and muscle expression is second to none
 -His dam is just as powerful, with a great foot under her, and a good functional udder
 -The combination of Hall Pass put onto the Rio Grande/Godfather pedigree, should be very maternal

49

LFE BLOCKBUSTER 3011C

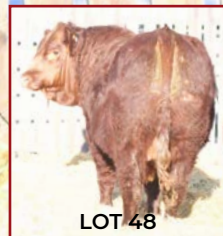
SIRE: LFE HALL PASS 851G

LFE RS COCOA 658C

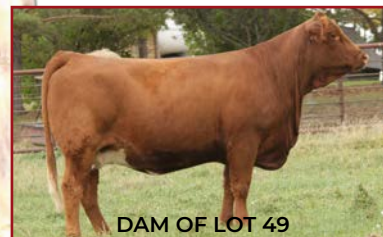
SVS BROOKS 669D

DAM: MAVV GWEN 54G

PARVIEW'S LADY KYRA 264Z



LOT 48



DAM OF LOT 49



MATERNAL GRANDSIRE

MADER FACE OFF 139K

26 January 2022 • MDR 139K • PTG1398077

Homo Polled

EPD	EPDs					Carcass EPDs							
	CE	BW	WW	YW	Milk	MCE	MWW	API	TI	CWT	REA	Fat	Marb
Breed Rank	5.9	5.1	87.4	129.5	28.3	0.5	72.0	114.8	73.7	29.3	0.84	-0.10	-0.09
	70	80	15	15	45	90	25	40	25	40	60	60	65

BW	205 Wt.	365 Wt.	ADG	WPDA
89	999	1521	3.26	4.15

Leptin Testing			
Leptin	PMCH	IGF2	CRH4
PENDING			

CE
☆☆

-A dark cherry red bull that possesses extra length of spine, added boldness, and a great design
 -His dam was purchased out of the Friday Night Lights sale as a feature SVS Brooks daughter, and she entered the donor program the next spring
 -The dark pigment of both the sire and dam shine through on this bull, and we feel his physical quality, and genetic makeup rise him to the top
 -Just about 1000lbs at weaning and boasting a 1521 Adj WW, also ranking in the top 15% of breed for WW and YW

50

LFE BLOCKBUSTER 3011C

SIRE: LFE HALL PASS 851G

LFE RS COCOA 658C

NCB COBRA 47Y

DAM: MADER LADY 50G

ERIXON LADY 202S



DAM OF LOT 50



MATERNAL BROTHER OF LOT 50

MADER FAIR PLAY 40K

8 January 2022 • MDR 40K • PTG1398064

Homo Polled

EPD	EPDs					Carcass EPDs							
	CE	BW	WW	YW	Milk	MCE	MWW	API	TI	CWT	REA	Fat	Marb
Breed Rank	8.5	2.4	76.6	115.6	26.7	5.5	65.0	123.9	71.7	23.6	0.86	-0.09	-0.06
	40	30	50	45	55	30	60	15	40	65	55	70	55

BW	205 Wt.	365 Wt.	ADG	WPDA
84	842	1351	3.18	3.65

Leptin Testing			
Leptin	PMCH	IGF2	CRH4
PENDING			

CE
☆☆

-An embryo bull sired by the \$100,000 LFE Hall Pass sire, and produced from the 2022 National Champion Female at Agribition, Mader Lady 50G
 -Last years maternal brother demanded \$42,000
 -This female offers the well known and high quality udder, foot, and angularity that all the Cobra daughters offer
 -Dark cherry red, added spine, adequate muscle and power, and moves out with ease
 -A very consistent set of EPD'S as he basically ranks in the top 30-50% for all categories

51

LFE BLOCKBUSTER 3011C

SIRE: LFE HALL PASS 851G

LFE RS COCOA 658C

MADER FREQUENCY 117Z

DAM: MADER SIERRA 141D

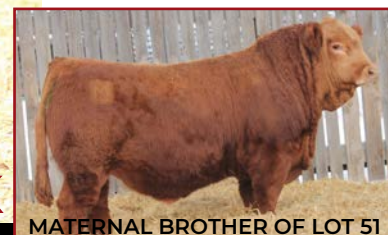
CROSSROAD SIERRA 524S



DAM OF LOT 51



LOT 51



MATERNAL BROTHER OF LOT 51

MADER DEVOTION 39K

8 January 2022 • MDR 39K • PG1403700

Polled

EPD	EPDs					Carcass EPDs							
	CE	BW	WW	YW	Milk	MCE	MWW	API	TI	CWT	REA	Fat	Marb
Breed Rank	7.6	4.4	73.9	111.7	26.2	4.0	63.2	118.8	68.1	24.3	0.85	-0.10	-0.03
	50	65	65	55	60	55	70	25	65	65	60	65	40

Leptin Testing					CE			
BW	205 Wt.	365 Wt.	ADG	WPDA	Leptin	PMCH	IGF2	CRH4
85	850	1408	3.49	3.89	CC	AT	CC	CG

-Blood red in color, soggy in his design, he carries a lot of mass and power throughout
 -A pretty unique pedigree when you combine Blockbuster and Vegas, then you add in the outcross Mutombo and legendary Red by Design
 -The grandam on the bottom side, Sierra 524S, has been a building block for us, creating as many high dollar bulls for us as any, while retaining some terrific daughters
 -A modest 85lb birthweight boasting an impressive 205 day weight of 850lbs

52

LFE BLOCKBUSTER 3011C

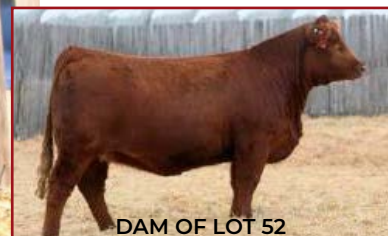
SIRE: LFE HALL PASS 851G

LFE RS COCOA 658C

CCLT ALLIANCE 91C

DAM: MRL MISS 9463G

MRL MISS 7368E



DAM OF LOT 52



MATERNAL BROTHER OF LOT 52

MADER GOOD LIFE 35K

7 January 2022 • MDR 35K • PG1403699

Homo Polled

EPD	EPDs					Carcass EPDs							
	CE	BW	WW	YW	Milk	MCE	MWW	API	TI	CWT	REA	Fat	Marb
Breed Rank	5.8	4.6	89.3	130.5	24.2	1.9	68.9	109.0	75.6	36.4	1.04	-0.11	-0.07
	70	70	10	15	75	80	40	60	20	15	10	55	60

Leptin Testing					CE			
BW	205 Wt.	365 Wt.	ADG	WPDA	Leptin	PMCH	IGF2	CRH4
86	859	1256	2.48	3.43	CT	AT	CC	CC

-These Hall Pass sons are all so consistent in their type and kind, being dark red, moderate and tanky, very sound footed, and easy fleshing
 -His second calving dam has great teat size, a very level udder, and is a feminine made, big bodied cow
 -Ranks in the top 15% for WW and YW
 -Big time haircoat, tidy fronted with a smaller skull, offers lot of width and style

53

LFE BLOCKBUSTER 3011C

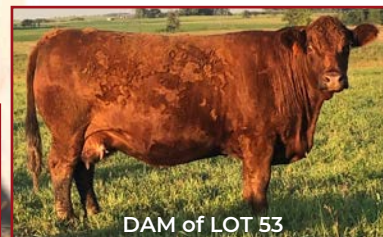
SIRE: LFE HALL PASS 851G

LFE RS COCOA 658C

LRX THE GODFATHER 141Z

DAM: MADER FAT TAMMY 13C

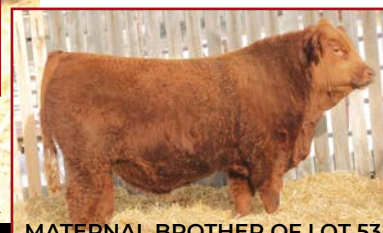
MADER LADY GOLD 131Y



DAM of LOT 53



LOT 53



MATERNAL BROTHER OF LOT 53

MADER HARBOR LIGHTS 34K

7 January 2022 • MDR 34K • PG1403698

Homo Polled

EPD	EPDs					Carcass EPDs							
	CE	BW	WW	YW	Milk	MCE	MWW	API	TI	CWT	REA	Fat	Marb
Breed Rank	80	80	60	50	90	95	90	80	90	60	50	50	85

Leptin Testing					CE			
BW	205 Wt.	365 Wt.	ADG	WPDA	Leptin	PMCH	IGF2	CRH4
89	751	1303	3.45	3.58	CT	AT	CC	CC

-Round, sound and close to the ground

-A beef machine with a table top, piles of dark red hair, and so much depth of rib

-His dam is a tank of a cow with a piles of body capacity and mass, an ideal udder type, and near perfect dark foot

-Hall Pass sired bulls and heifers that were modest at birth, had great weaning weights, are easy keeping type of cattle

54

LFE BLOCKBUSTER 3011C

SIRE: LFE HALL PASS 851G

LFE RS COCOA 658C

WFL WESTCOTT 24C

DAM: WHS FALLON 158F

LRX CHEYENNE 14U



MATERNAL GRANDSIRE



MATERNAL GRANDDAM

MADER FREE FALLIN' 145K

28 January 2022 • MDR 145K • PG1411326

Homo Polled

EPD	EPDs					Carcass EPDs							
	CE	BW	WW	YW	Milk	MCE	MWW	API	TI	CWT	REA	Fat	Marb
Breed Rank	85	80	35	30	85	95	75	80	60	35	30	85	70

Leptin Testing					CE			
BW	205 Wt.	365 Wt.	ADG	WPDA	Leptin	PMCH	IGF2	CRH4
94	866	1448	3.64	3.98	CT	AT	CC	CG

-A power combination crossing Hall Pass onto the pound producing Westcott sire

-This bull is packed full of red meat, he shows a lot of dimension from all angles

-Certainly a bull that should add some jam and power in his offspring based on his genetic makeup, and his loose hide and sogginess

-You will love his dam if you see her in the flesh... so big bodied, a big foot under her, and a superior udder attachment

55

LFE BLOCKBUSTER 3011C

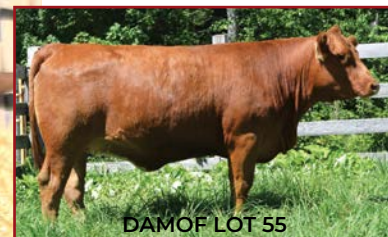
SIRE: LFE HALL PASS 851G

LFE RS COCOA 658C

HIDDEN H SWEET MEAT

DAM: FGAF DUSTY ROSE 117D

LRX DUSTY ROSE 56Z



DAM OF LOT 55



MATERNAL SISTER OF LOT 55

MADER CROSSCUT 45K

10 January 2022 • MDR 45K • PG1403702

Homo Polled

EPD	EPDs					Carcass EPDs							
	CE	BW	WW	YW	Milk	MCE	MWW	API	TI	CWT	REA	Fat	Marb
Breed Rank	6.0	5.1	84.9	126.3	23.0	3.1	65.5	110.35	72.3	35.4	0.96	-0.10	-0.06
	70	80	20	20	80	65	60	55	35	20	25	65	55

Leptin Testing					CE			
BW	205 Wt.	365 Wt.	ADG	WPDA	Leptin	PMCH	IGF2	CRH4
89	862	1401	3.37	3.89	CC	AT	CC	CG

-A broad topped bull with added length of body, frame score, and overall dimension
 -His dam really is as complete of a cow as you can make them from the ground up, and her future is very bright here
 -He has an actual weaning weight of 855lbs, and ranks in top 20% for WW and YW
 -Sired by the \$100,000 LFE Hall Pass sire who there will be limited bulls to sell out of him due to an injury that occurred

56

LFE BLOCKBUSTER 3011C

SIRE: LFE HALL PASS 851G

LFE RS COCOA 658C

TNT GUNNER N208

DAM: MADER P MODERATION 32W

TH RED LASS 11N



MATERNAL BROTHER OF LOT 56



MATERNAL BROTHER OF LOT 56

MADER DETOUR 52K

10 January 2022 • MDR 52K • PG1403706

Homo Polled

EPD	EPDs					Carcass EPDs							
	CE	BW	WW	YW	Milk	MCE	MWW	API	TI	CWT	REA	Fat	Marb
Breed Rank	6.5	3.7	72.1	106.1	25.6	2.8	61.7	108.6	67.3	22.8	0.73	-0.10	-0.02
	65	50	70	70	65	70	80	60	70	70	90	80	35

Leptin Testing					CE			
BW	205 Wt.	365 Wt.	ADG	WPDA	Leptin	PMCH	IGF2	CRH4
90	803	1305	3.14	3.60	CT	TT	CC	CG

-Backed by a 14 year old cow, who just recently calved to her AI date again, and has been a tremendous producer
 -Her last years son sold to McLaughlin Ag Ventures for \$26,000, and that was one of the many feature sons or daughters she has produced
 -This bull patterns a lot like last years son, he is masculine made, big hipped, loose made, with great hair and good disposition
 -790 lb actual weaning weight coming off an aged cow is impressive

57

LFE BLOCKBUSTER 3011C

SIRE: LFE HALL PASS 851G

LFE RS COCOA 658C

ACS RED KNIGHT 715T

DAM: SUN STAR LEXY 8Y

SUN STAR LEXY 19W



MATERNAL BROTHER OF LOT 57



MATERNAL BROTHER OF LOT 57

MADER **HONDA** 117K*Homo Polled*

20 January 2022 • MDR 117K • PG1403727

	EPDs					Carcass EPDs							
	CE	BW	WW	YW	Milk	MCE	MWW	API	TI	CWT	REA	Fat	Marb
EPD	8.6	3.1	66.6	98.5	22.1	3.7	55.4	114.8	63.8	21.8	0.70	-0.11	-0.07
Breed Rank	40	40	90	85	85	60	95	40	90	75	90	45	60

Leptin Testing									CE
BW	205 Wt.	365 Wt.	ADG	WPDA	Leptin	PMCH	IGF2	CRH4	
80	771	1267	3.10	3.49	CT	AT	CC	GG	☆☆

-A moderate framed bull with a lot of forerib, great shape throughout, and a great style about him
 -His 12 year old dam still maintains a great udder and body design, and has registered a calf every year, with 4 bulls that I can remember being highlights for this sale
 -A bull that will calve easy, maybe not your bomb proof heifer bull, but should work great to decrease BW with his smooth build

58

LFE BLOCKBUSTER 3011C

SIRE: LFE HALL PASS 851G

LFE RS COCOA 658C

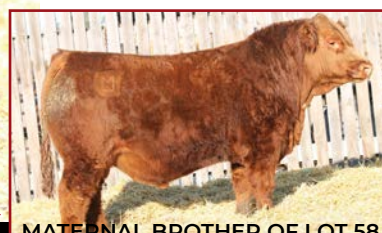
MRL GAME CHANGER 12A

DAM: MADER MERCEDES 204C

IPU MS. MERCEDES 111W



MATERNAL BROTHER OF LOT 58



MATERNAL BROTHER OF LOT 58

MADER **ROLLS ROYCE** 106K*Homo Polled*

16 January 2022 • MDR 106K • PG1403721

	EPDs					Carcass EPDs							
	CE	BW	WW	YW	Milk	MCE	MWW	API	TI	CWT	REA	Fat	Marb
EPD	5.2	4.4	68.8	105.0	24.5	3.2	58.9	109.0	63.4	21.5	0.80	-0.10	-0.07
Breed Rank	75	65	86	70	70	65	90	60	90	75	75	70	60

Leptin Testing									CE
BW	205 Wt.	365 Wt.	ADG	WPDA	Leptin	PMCH	IGF2	CRH4	
89	788	1290	3.14	3.57	CC	TT	CC	CG	☆☆

-Extra frame and added length, backed by a big strong dam that milks heavy
 -He offers a nice pigment of red, is strong footed, and very docile
 -Take advantage of getting one of these Hall Pass sons, which should be very good at passing on great maternal traits

59

WFL WESTCOTT 24C

SIRE: MADER UNIVERSAL 65F
MADER HEATHER 158X

LBCC BUCKSHOT 404B

DAM: LBCC DRAMA QUEEN 607D
GREYLEGE RING OF FAITH



MATERNAL BROTHER OF LOT 59



DAM OF LOT 59

MADER **KINGS COURT** 132K

25 January 2022 • MDR 132K • PG1403732

Homo Polled

	EPDs										Carcass EPDs		
	CE	BW	WW	YW	Milk	MCE	MWW	API	TI	CWT	REA	Fat	Marb
EPD	5.9	4.0	81.0	120.6	26.0	3.7	66.5	115.1	71.5	32.0	0.88	-0.11	-0.07
Breed Rank	70	60	30	30	60	60	55	40	40	30	50	55	60
	BW 205 Wt. 365 Wt. ADG WPDA					Leptin Testing					CE		
						Leptin PMCH IGF2 CRH4							
	90	892	1481	3.68	4.10	CT AT CC CC							

-Here is a beef machine that expresses so much depth and dimension
 -You can't put much more thickness and muscle on a bull, while maintaining functionality and style
 -He boasts an 892 Adj WW, and a 1481 Adj YW
 -His dam has recently produced two back to back daughters that were top end females in our Ladies Night sale, and expressed her great muscle pattern, teat size, and shear power
 -A herd bull we are very proud of, and think he will easily be found in the pen

60

WFL WESTCOTT 24C

SIRE: MADER UNIVERSAL 65F
MADER HEATHER 158X

WFL TROJAN 63C

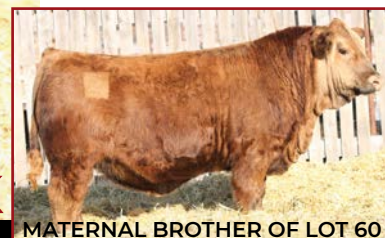
DAM: MADER TRANCE 68E
VIRGINIA MS ZANETA



DAM & MATERNAL BROTHER



LOT 60



MATERNAL BROTHER OF LOT 60

MADER **NORTHBOUND** 83K

22 January 2022 • MDR 83K • PG1403715

Homo Polled

	EPDs					Carcass EPDs								
	CE	BW	WW	YW	Milk	MCE	MWW	API	TI	CWT	REA	Fat	Marb	
EPD	5.7	5.5	97.0	150.6	23.0	0.4	71.5	119.4	81.0	43.8	1.01	-0.08	0.01	
Breed Rank	70	85	2	1	80	95	30	25	4	3	15	95	25	
						Leptin Testing								CE
	BW	205 Wt.	365 Wt.	ADG	WPDA	Leptin PMCH IGF2 CRH4								
	91	921	1404	3.02	3.92	CT AT CT CG								

83K
 -This guy expresses a real mature, masculine appearance, with his broad top, wide chest floor, and attractive style
 -His sire, Universal, was a past high seller for us for \$19,000 to McLaughlin's, and we have been very impressed with the real data performance his calves all have
 -His hard working dam is big barreled, great footed, with a square made udder
 -He pushed down the scale at 900lbs coming off the cow, and ranks in the top 2% for WW and YW

61

WFL WESTCOTT 24C

SIRE: MADER UNIVERSAL 65F
MADER HEATHER 158X

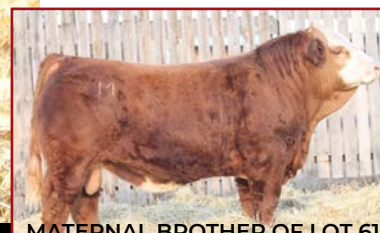
MADER P LADIES MAN 37W

DAM: MADER UNBROKEN 41Y
IPU MS RED RIBEYE 174N

LOT 61



MATERNAL BROTHER OF LOT 61



MATERNAL BROTHER OF LOT 61

MADER PHOENIX 103K

16 January 2022 • MDR 103K • PG1403720

Homo Polled

	EPDs					Carcass EPDs							
	CE	BW	WW	YW	Milk	MCE	MWW	API	TI	CWT	REA	Fat	Marb
EPD	4.2	5.6	96.2	149.5	28.7	1.5	76.8	111.2	78.9	45.0	1.00	-0.10	-0.07
Breed Rank	85	85	2	1	45	85	10	50	10	2	20	75	60

Leptin Testing					CE			
BW	205 Wt.	365 Wt.	ADG	WPDA	Leptin	PMCH	IGF2	CRH4
88	955	1395	2.75	3.90	CC	AT	CC	CC

-A cow bull that is going to add power and pounds
 -His extra length of spine and added frame weigh up, and with his big foot, depth of body, true muscle, and stoutness, will all factor into more weight in his offspring
 -His 12 year old dam has been a real force around here, bringing in one big calf after another, and the daughters we have retained, follow right in her footsteps
 -A maternal sister just sold a daughter for \$52,000 for half interest to Westman Farms in our recent Ladies Night sale

62

WFL WESTCOTT 24C

SIRE: MADER UNIVERSAL 65F
MADER HEATHER 158X

WFL BLINDLINE 28D

DAM: MADER OPAL 545F
MADER OPAL 72D

MATERNAL BROTHER OF LOT 62



MATERNAL BROTHER OF LOT 62

MADER JUSTIFY 17K

2 January 2022 • MDR 17K • PG1403691

Homo Polled

	EPDs					Carcass EPDs							
	CE	BW	WW	YW	Milk	MCE	MWW	API	TI	CWT	REA	Fat	Marb
EPD	3.6	5.4	94.2	143.6	24.9	-0.7	72.0	109.6	76.4	45.7	1.09	-0.09	-0.10
Breed Rank	90	85	4	3	70	100	25	55	15	2	5	90	70

Leptin Testing					CE			
BW	205 Wt.	365 Wt.	ADG	WPDA	Leptin	PMCH	IGF2	CRH4
93	876	1415	3.37	3.82	CC	AA	CC	CG

-Another big strapping Universal son that is very wide over his top, very round in his muscle pattern, and very bold in his rib cage
 -His dam just recently calved here, and has a superior udder with great teat size, and is a great momma cow
 -Look at the performance data on this guy... an 876lb Adj WW, and a 1415lb Adj YW
 -A cow bull that will make you money on steer and heifer calves

63

WFL WESTCOTT 24C

SIRE: MADER UNIVERSAL 65F

MADER HEATHER 158X

WFL TROJAN 63C

DAM: MADER JACKPOT 18E

MADER P JACKPOT 59S



LOT 63



MATERNAL SISTER OF LOT 63



SIRE OF LOT 63

MADER COUNTRY ROAD 121K

21 January 2022 • MDR 121K • PG1403730

Homo Polled

EPD	EPDs					Carcass EPDs							
	CE	BW	WW	YW	Milk	MCE	MWW	API	TI	CWT	REA	Fat	Marb
Breed Rank	5.7	3.6	81.9	128.8	21.2	0.3	62.2	113.3	73.1	37.3	0.87	-0.09	-0.03
	70	50	30	20	90	95	75	45	30	15	55	90	40

Leptin Testing					CE			
BW	205 Wt.	365 Wt.	ADG	WPDA	Leptin	PMCH	IGF2	CRH4
90	832	1347	3.22	3.74	CT	AT	CT	CC

-A bull that really has a neat profile and design to him, he is so deep made, is full through the heart girth and flank region, and is very fluid on the move
 -He carries an ideal blaze, is extensive through his neck, and is very docile
 -His red blaze face dam is a moderate cow with a nice tight udder that must be full of butter fat as she continues to wean off the big ones
 -These Universal bulls are so consistent in their type and kind, and are really performance oriented

64

WFL WESTCOTT 24C

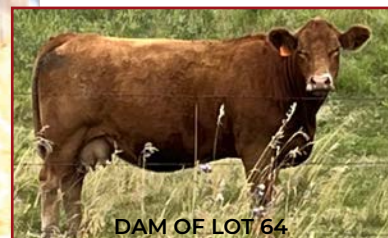
SIRE: MADER UNIVERSAL 65F

MADER HEATHER 158X

WFL DOWNTOWN 26D

DAM: MADER INTENSITY 500F

MADER P INTENSITY 79W



DAM OF LOT 64



MATERNAL SISTER OF LOT 64

MADER WIND RIVER 120K

21 January 2022 • MDR 120K • PG1403729

Homo Polled

EPD	EPDs					Carcass EPDs							
	CE	BW	WW	YW	Milk	MCE	MWW	API	TI	CWT	REA	Fat	Marb
Breed Rank	3.3	6.6	103.3	154.2	30.5	-0.2	82.2	109.5	80.5	53.7	1.20	-0.09	-0.11
	90	95	1	1	35	95	2	55	5	1	85	75	

Leptin Testing					CE			
BW	205 Wt.	365 Wt.	ADG	WPDA	Leptin	PMCH	IGF2	CRH4
97	992	1568	3.60	4.33	CT	AA	CT	CC

-The last time we weighed these bulls, this guy was the heavy weight, and I think that's obvious when you see his 205 day weight at 992lbs, and 365 day weight at 1568lbs
 -The Universal bulls are all in that 90-95lb birthweights and born with a solid look to them, I have obviously put them as 1 star bulls as they are made for cows, but I cant recall having to assist any
 -A bull with added frame, length, sogginess, and shear mass
 -His second calving dam has a bright future, as she has gone 2/2 in terms of quality on her first two progeny
 -He tops the breed for WW and YW ranking in the top 1% for EPDs

65

BGS/BM CAPTAIN SCREAM 63D

SIRE: SVS BETTS 808F

WFL RED SAGE 506C

WFL BLINDLINE 28D

DAM: MADER SIERRA 142F

CROSSROAD SIERRA 524S



LOT 65



LOT 65



MATERNAL BROTHER OF LOT 65

MADER JUDGE 16K

Homo Polled

22 January 2022 • MDR 72K • PG652078

EPD	EPDs					Carcass EPDs							
	CE	BW	WW	YW	Milk	MCE	MWW	API	TI	CWT	REA	Fat	Marb
Breed Rank	7.7	4.9	87.8	131.4	28.1	8.7	72.0	105.8	71.5	29.3	0.94	-0.10	-0.22
	50	75	15	15	50	5	25	70	40	40	30	65	100

Leptin Testing					CE			
BW	205 Wt.	365 Wt.	ADG	WPDA	Leptin	PMCH	IGF2	CRH4
92	899	1401	3.14	3.87	CT	AA	CC	CC

-This big strong bull is absolutely impressive to analyze
 -So much muscle, boldness, thickness, and capacity, all on a skeleton that is very athletic
 -He has a big haircoat, ideal blaze face, and going to be a pound producer
 -Excellent dam behind him too, her first son was also a heavyweight in the pen selling for \$9000 to Fletcher Land and Cattle
 -The Betts progeny continue to impress, and very dominant in the breed
 -This bull is more standoffish in the group, and tends to get more excited when singled out, with that said if you're not looking for a pet and can handle this bull in a more cowboy environment, he will do nothing but make you money

66

MRL RED WHISKEY 101B

SIRE: MRL CROWN ROYAL 32E

MRL MSS 3350A

MADER P BLK RANSOM 23U

DAM: MADER READY TO RUMBA 127Z

TWIN-CHIEF RUMBA 168R



SIRE OF LOT 66



LOT 66



MATERNAL BROTHER OF LOT 66

MADER WHISKEY RIVER 191K

Homo Polled

21 February 2022 • MDR 191K • PG1403754

EPD	EPDs					Carcass EPDs							
	CE	BW	WW	YW	Milk	MCE	MWW	API	TI	CWT	REA	Fat	Marb
Breed Rank	8.9	3.2	72.2	106.1	24.0	6.5	60.1	113.1	69.8	25.5	0.84	-0.11	0.03
	35	40	70	70	75	20	85	45	50	60	60	50	20

Leptin Testing					CE			
BW	205 Wt.	365 Wt.	ADG	WPDA	Leptin	PMCH	IGF2	CRH4
87	955	1359	2.47	3.62	CC	AA	CC	CC

-A heifer bull candidate here, with a blood red color to him, and that million dollar money stripe down his head
 -Crown Royal was successfully used on heifers for 3 years, throwing lighter bone, smaller heads, and vigorous calves that were up sucking right away
 -This bull is long made, has a great temperament, and is very proportionate
 -His 11 year old dam was a solid producing black blaze face female who was just recently retired

67

BGS/BM CAPTAIN SCREAM 63D

SIRE: SVS BETTS 808F

WFL RED SAGE 506C

MRC INVESTOR 60B

DAM: ERIXON LADY 121D

ERIXON LADY 8A



SIRE OF LOT 67 & 68



MATERNAL BROTHER OF LOT 67

MADER CALL OF THE WILD 176K

12 February 2022 • MDR 176K • PTG1398083

Homo Polled

	EPDs					Carcass EPDs					Marb		
	CE	BW	WW	YW	Milk	MCE	MWW	API	TI	CWT		REA	Fat
EPD	6.6	5.4	84.5	127.5	25.2	7.0	67.5	100.8	70.9	28.6	0.86	-0.09	-0.11
Breed Rank	60	85	20	20	65	15	50	85	45	45	55	80	75
					Leptin Testing					CE			
					Leptin PMCH IGF2 CRH4								
					PENDING								
										★			
										★			
										★			
										★			
										★			
										★			
										★			
										★			
										★			
										★			
										★			
										★			
										★			
										★			
										★			
										★			
										★			
										★			
										★			
										★			
										★			
										★			
										★			
										★			
										★			
										★			
										★			
										★			
										★			
										★			
										★			
										★			
										★			
										★			
										★			
										★			
										★			
										★			
										★			
										★			
										★			
										★			
										★			
										★			
										★			
										★			
										★			
										★			
										★			
										★			
										★			
										★			
										★			
										★			
										★			
										★			
										★			
										★			
										★			
										★			
										★			
										★			
										★			
										★			
										★			
										★			
										★			
										★			
										★			
										★			
										★			
										★			
										★			
										★			
										★			
										★			
										★			
										★			
										★			
										★			
										★			
										★			
										★			
										★			
										★			
										★			
										★			
										★			
										★			
										★			
										★			
										★			

-An embryo calf coming from the powerful Betts sire, and an absolute tank of a dam
 -This donor cow has been flushed several times with success to many bulls, a feature son of hers two years back brought \$10,000 to Mashon Ranches, and a daughter sold for \$9000 to Dana Johns
 -This guy shows a lot of round muscle shape, is very wide through his pins, carrying definition down low into his twist and lower quarter
 -Very complete in his makeup, great performance data, expect this guy to leave you with some excellent replacements, while his steer calves weigh down the scale

68

BGS/BM CAPTAIN SCREAM 63D

SIRE: SVS BETTS 808F

WFL RED SAGE 506C

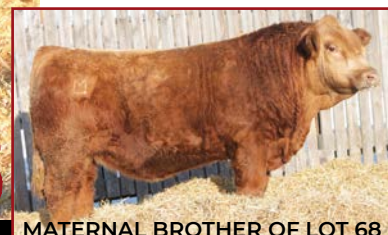
MRC INVESTOR 60B

DAM: ERIXON LADY 121D

ERIXON LADY 8A



DAM OF LOT 67 & 68



MATERNAL BROTHER OF LOT 68

MADER DANCES WITH WOLVES

4 February 2022 • MDR 158K • PTG1398082

Homo Polled

	EPDs					Carcass EPDs					Marb		
	CE	BW	WW	YW	Milk	MCE	MWW	API	TI	CWT		REA	Fat
EPD	6.6	5.6	86.9	130.9	25.2	7.0	68.7	101.3	72.1	31.3	0.90	-0.09	-0.11
Breed Rank	60	85	15	15	65	15	40	85	35	30	45	80	75

Leptin Testing					CE
BW	205 Wt.	365 Wt.	ADG	WPDA	
96	965	1437	2.95	4.01	★

Leptin PMCH IGF2 CRH4
PENDING

-A full brother to the bull above, and very similar built
 -They are very well balanced and proportion their great characteristics throughout their bodies
 -Nice headed, soft in that middle third, lots of width of base
 -Certainly a cow bull here that will sire calves with extra jam, as he himself has an actual weaning weight of 850lbs

69

R PLUS VENOM 4006B

SIRE: MRL PLAYMAKER 36G

MRL MISS 4335B

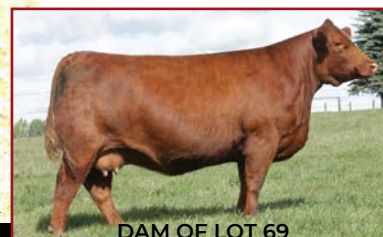
NCB COBRA 47Y

DAM: SUNNY VALLEY PAYTON 77E

SUNNY VALLEY MS 84C



SIRE OF LOT 69



DAM OF LOT 69



LOT 69

MADER PLAYERS CLUB 140K

26 January 2022 • MDR 140K • PTG1398078

Homo Polled

EPD	EPDs					Carcass EPDs							
	CE	BW	WW	YW	Milk	MCE	MWW	API	TI	CWT	REA	Fat	Marb
Breed Rank	6.9	4.8	92.0	140.7	20.9	2.8	66.9	103.3	72.5	35.5	1.05	-0.11	-0.26
Breed Rank	60	75	5	4	90	70	50	80	35	20	10	40	100

Leptin Testing					CE		
BW	205 Wt.	365 Wt.	ADG	WPDA	Leptin	PMCH	IGF2
84	892	1407	3.22	3.91	PENDING		

-An embryo bull double bred to the leading AI sire, NCB Cobra

-His sire was an \$80,000 high selling bull, and his dam was successfully shown standing in the winners circle at every year show she attended, but most impressively producing the right kind

-A maternal sister was recently sold at Friday Night Lights for \$27,000

-We had two full brothers in the sale last year selling to Praeker Ag and L&J Murray Ranches

-Very stout and bold in his makeup, very quiet, and very thick

-Just an 84lb birthweight, excelling in performance ranking in the top 5% for WW and YW, and having an actual weaning weight of 820lbs

70

LFE VEGAS 3145A

SIRE: DMF CAPITAL GAINS 828F

DMF MS TUCKER 112Y

MADER FUGITIVE 35C

DAM: MADER SIERRA 30E

MADER HONEY BEE 16Z



MATERNAL BROTHER OF LOT 70



MATERNAL BROTHER OF LOT 70

MADER NETWORK 126K

22 January 2022 • MDR 126K • PG1403731

Homo Polled

EPD	EPDs					Carcass EPDs							
	CE	BW	WW	YW	Milk	MCE	MWW	API	TI	CWT	REA	Fat	Marb
Breed Rank	5.5	5.0	76.0	111.7	29.1	2.8	67.1	107.1	66.5	30.6	1.00	-0.11	-0.11
Breed Rank	75	75	55	55	40	70	50	65	75	35	20	55	75

Leptin Testing					CE		
BW	205 Wt.	365 Wt.	ADG	WPDA	Leptin	PMCH	IGF2
86	871	1337	2.91	3.67	CT	AA	CC

-Just the one Capital Gains son this year, but he's a good one, and his brothers were very well accepted last year

-The Capital Gains son are heavy muscled, big footed, big nutted, and are easy fleshing like this bull

-His dark red dam has now had 4 consecutive sons in this sale, a testament to her milking ability

-Note that his great grandma is Sierra 524S, a cow that has been flushed multiple times, and has some very productive daughters in the herd

71

CROSSROAD BLACK REBEL 4F

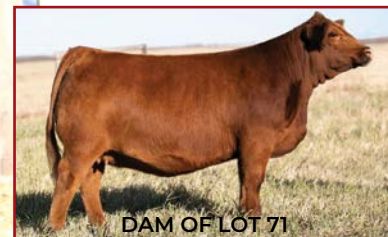
SIRE: BLACK GOLD REBEL 175H

BLACK GOLD MS SODA 111F

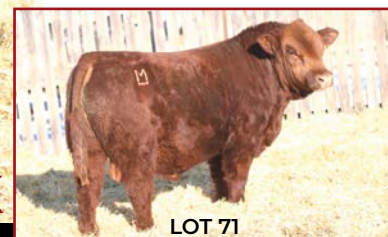
RPLUS RELOAD 2006Z

DAM: ULTRA 30B CAREY 77H

ULTRA MISS CAREY 30B



DAM OF LOT 71



LOT 71

MADER REBEL YELL 7K

22 January 2022 • MDR 7K • PG652078

Homo Polled

EPD	EPDs										Carcass EPDs			
	CE	BW	WW	YW	Milk	MCE	MWW	API	TI	CWT	REA	Fat	Marb	
Breed Rank	-	-	-	-	-	-	-	-	-	-	-	-	-	-
EPD	EPDs										Carcass EPDs			
	CE	BW	WW	YW	Milk	MCE	MWW	API	TI	CWT	REA	Fat	Marb	
Breed Rank	-	-	-	-	-	-	-	-	-	-	-	-	-	-
EPD	EPDs										Carcass EPDs			
	CE	BW	WW	YW	Milk	MCE	MWW	API	TI	CWT	REA	Fat	Marb	
Breed Rank	-	-	-	-	-	-	-	-	-	-	-	-	-	-

- Heifer bull time
- A blood red, smooth made bull, with just an 81 pound BW
- His dam was purchased last fall from Friday Night Lights for \$18,000, and has turned into an exceptional cow
- This bull is moderate in his frame, is very deep ribbed and heavy muscled, and moves like a cat
- His sire was used heavily on heifers last year, and knocked it out of the park, siring small vigorous calves
- Due to a paperwork malfunction, we are unable to have full performance data on him at this time, but will have a supplement sheet come sale day

CE



72

STF CRIMSON TIDE DZ87

SIRE: CMS LOGIC 010H

CMS LUBA 808F

MADER THE NATIONAL 43E

DAM: MADER OPAL 163H

MADER OPAL 91F



SIRE OF LOT 72



MATERNAL GRANDSIRE

MADER HOSTAGE 112K

20 January 2022 • MDR 112K • PG1403724

Homo Polled

EPD	EPDs										Carcass EPDs			
	CE	BW	WW	YW	Milk	MCE	MWW	API	TI	CWT	REA	Fat	Marb	
Breed Rank	8.0	2.0	78.3	114.0	21.6	4.8	60.8	113.4	72.2	29.3	0.76	-0.09	-0.04	
EPD	EPDs										Carcass EPDs			
	CE	BW	WW	YW	Milk	MCE	MWW	API	TI	CWT	REA	Fat	Marb	
Breed Rank	45	25	45	45	90	40	80	45	35	40	85	90	45	
EPD	EPDs										Carcass EPDs			
	CE	BW	WW	YW	Milk	MCE	MWW	API	TI	CWT	REA	Fat	Marb	
Breed Rank	45	25	45	45	90	40	80	45	35	40	85	90	45	

- Heifer bull candidate here with an 82lb BW, and built very smooth
- Sired by CMS Logic, the dark red blaze face bull that is calving well on heifers, and siring moderate framed, thick cattle, that are born small and vigorous
- The dam is a red National daughter that is full of rib and capacity, is beautiful uddered, and just a real nice young cow to have up and coming in the herd

CE



73

BGS/BM CAPTAIN SCREAM 63D

SIRE: SVS BETTS 808F

WFL RED SAGE 506C

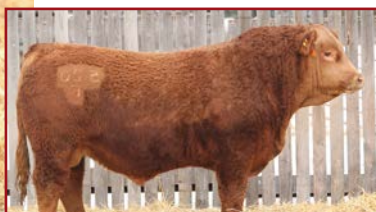
LFE RED CASINO 3036X

DAM: WILLOWDALE URIELA 15B

WILLOWDALE MS RED ACE 4X



MATERNAL BROTHER OF LOT 73



MATERNAL BROTHER OF LOT 73

MADER BRAZEN 819J

11 June 2021 • MDR 819J • PG1393897

Homo Polled

	EPDs					Carcass EPDs							
	CE	BW	WW	YW	Milk	MCE	MWW	API	TI	CWT	REA	Fat	Marb
EPD	8.5	4.7	84.5	126.6	24.7	7.2	67.0	97.9	70.6	31.5	0.86	-0.9	-0.16
Breed Rank	40	70	20	20	70	15	50	90	45	30	55	75	90

	Leptin Testing									CE
	BW	205 Wt.	Jan 5 Wt.	ADG	WPDA	Leptin	PMCH	IGF2	CRH4	
	86	707	1630	2.80	2.85	CC	AA	TT	CC	☆☆

- One of the stoutest, most rugged made bulls in the whole offering
- Thick guy is packed full of red meat and muscle, and is just flat out one hell of a bull
- He travels on a big foot, is big testicled, and has the maturity and masculinity of a true herdbull
- Last years full brother sold to Cappen Cattle Co as a sale feature as well
- These Betts long yearlings continue to impress, and backed by a huge volumed Casino cow who always produces pounds, just adds value to this bull
- He ranks well for CE and for WW and YW

74

BGS/BM CAPTAIN SCREAM 63D

SIRE: SVS BETTS 808F

WFL RED SAGE 506C

CDI/PLCC DR. PHIL 145U

DAM: MADER LADY DAISY 123Y

ERIXON LADY 202S



MATERNAL BROTHER OF LOT 74



MATERNAL BROTHER OF LOT 74

MADER WINDFALL 804J

2 June 2021 • MDR 804J • PG1393892

Homo Polled

	EPDs					Carcass EPDs							
	CE	BW	WW	YW	Milk	MCE	MWW	API	TI	CWT	REA	Fat	Marb
EPD	8.8	3.6	89.4	131.1	23.4	6.5	68.1	110.7	76.1	30.6	0.97	-0.10	-0.12
Breed Rank	35	50	10	15	80	20	45	55	15	35	25	65	80

	Leptin Testing									CE
	BW	205 Wt.	Jan 5 Wt.	ADG	WPDA	Leptin	PMCH	IGF2	CRH4	
	84	705	1755	3.08	3.02	TT	AA	TT	CC	☆☆

- A deep ribbed bull that carries a lot of natural definition and mass, all while travelling around the pen with ease and athleticism
- You couldn't make a much better cow to evaluate than his dam, very square udder with small teats, feminine, very nice in her lines, big volumed, with great feet and legs
- Top 35% for CE and top 15% for both WW and YW
- Power bull

75

BGS/BM CAPTAIN SCREAM 63D

SIRE: SVS BETTS 808F

WFL RED SAGE 506C

KUNTZ SUPER DUTY 4Y

DAM: MADER DEEP SOUTH 17D

MADER SWEET HEAT 152A



MATERNAL BROTHER OF LOT 75



MATERNAL BROTHER OF LOT 75

MADER DOUBLE AGENT 830J

16 June 2021 • MDR 830J • PG1393901

Homo Polled

EPD	EPDs					Carcass EPDs							
	CE	BW	WW	YW	Milk	MCE	MWW	API	TI	CWT	REA	Fat	Marb
Breed Rank	60	70	40	30	90	55	80	95	75	55	60	85	95

Leptin Testing					CE			
BW	205 Wt.	Jan 5 Wt.	ADG	WPDA	Leptin	PMCH	IGF2	CRH4
90	652	1560	2.77	2.74	TT	AA	CT	CC

-A big powerful cow bull here backed by two performance oriented sires, Betts and Super Duty
 -He has a nice red color to him, lots of depth of body, and travels very freely
 -His dam is moderate and milky, and last year raised a full brother that sold to J Bar and Westman Farms for \$10,000
 -Sons will push down the scale and daughters will be desirable to retain

76

BGS/BM CAPTAIN SCREAM 63D

SIRE: SVS BETTS 808F

WFL RED SAGE 506C

MRL GAME CHANGER 12A

DAM: MADER SIERRA 64C

MADER SIERRA 39Z



MATERNAL BROTHER OF LOT 76



MATERNAL GRANDDAM

MADER PRIVILEGE 831J

16 June 2021 • MDR 831J • PG1393902

Polled

EPD	EPDs					Carcass EPDs							
	CE	BW	WW	YW	Milk	MCE	MWW	API	TI	CWT	REA	Fat	Marb
Breed Rank	45	55	35	30	60	5	55	80	60	55	55	65	95

Leptin Testing					CE			
BW	205 Wt.	Jan 5 Wt.	ADG	WPDA	Leptin	PMCH	IGF2	CRH4
83	641	1515	2.67	2.67	CT	AA	CC	CG

-Another powerful Betts son backed by a bigger framed, big bodied momma cow
 -These Betts progeny are so consistent in carrying that extra muscle mass and shape, while still maintaining an attractive look and functionality
 -This bull is wide topped, stout through that loin, and very muscular through his twist and lower quarter

77

LFE THE RIDDLER 323B

SIRE: MADER THE NATIONAL 43E

LFE BS VIOLET 641A

LFE HEAVY HITTER 352C

DAM: MADER OPAL 65G

MADER OPAL 210B



DAM OF LOT 77



SIRE OF LOT 77 & 78

MADER **ESCAPE** 854J

22 July 2021 • MDR 854J • PG1393911

Homo Polled

EPD	EPDs					Carcass EPDs							
	CE	BW	WW	YW	Milk	MCE	MWW	API	TI	CWT	REA	Fat	Marb
Breed Rank	72	4.3	96.6	153.5	18.5	4.2	66.8	118.5	81.0	51.8	1.05	-0.08	-0.04
	55	65	2	1	100	50	50	30	4	1	10	95	45

Leptin Testing					CE			
Leptin	PMCH	IGF2	CRH4		TT	AA	CC	CC
BW	205	Jan 5	ADG	WPDA				
Wt.	Wt.	Wt.						
83	690	1500	2.63	2.82				

-A stacked pedigree in this bull offering a unique twist in pedigree for the red gene pool, being sired by two black parents
 -The National progeny continue to impress with their ability to calve easy and get up and grow rapidly
 -Both National and Heavy Hitter do offer a lot of growth though, and I expect a bull like this to sire smaller, vigorous calves, that weigh up in the fall
 -His first calving dam made it to the summer program as she slipped her calf late summer, and being one of our favorite replacements, was given a second chance in the herd
 -Like all Opal relations, she milks heavy, is easy fleshing, has a great foot, and did a great job on this bull

78

LFE THE RIDDLER 323B

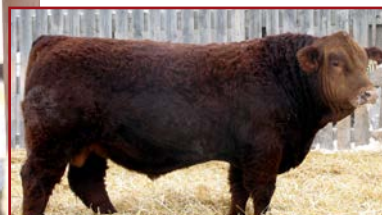
SIRE: MADER THE NATIONAL 43E

LFE BS VIOLET 641A

LRX ROCHFORD 51X

DAM: MADER CLUB MONACO 154A

J ANCHOR MS CLUB KING 12Y



MATERNAL BROTHER OF LOT 42



PATERNAL GRANDSIRE

MADER **SURVIVOR** 846J

18 July 2021 • MDR 846J • PG1393907

Homo Polled

EPD	EPDs					Carcass EPDs							
	CE	BW	WW	YW	Milk	MCE	MWW	API	TI	CWT	REA	Fat	Marb
Breed Rank	9.8	2.6	85.0	140.1	15.7	6.8	58.2	129.7	78.3	40.4	0.90	-0.08	0.03
	25	30	20	5	100	15	90	10	10	10	45	95	20

Leptin Testing					CE			
Leptin	PMCH	IGF2	CRH4		TT	AA	CC	CC
BW	205	Jan 5	ADG	WPDA				
Wt.	Wt.	Wt.						
79	645	1525	2.70	2.85				

-Another calving ease bull sired by National, starting at 79lbs, and ranking in the top 25% for CE, 30% for BW, and having the power to stand top 20% for WW, and 5% for YW
 -A nice darker red color to this bull, backed by a very level uddered, feminine made, shapely bodied dam
 -Utilize an extra age bull like this to cover more cows, maintain body condition better, and be a reliable bull source

79

RF CAPACITY 742E

SIRE: SVS DYNASTY 915G

WFL RED SAGE 506C

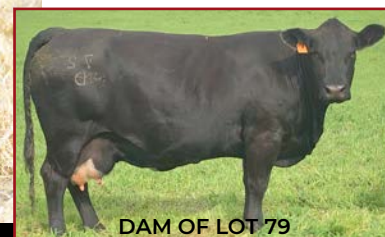
KUNTZ SUPER DUTY 4Y

DAM: MADER OPAL 72D

CG BLACK OPAL 652S



MATERNAL BROTHER OF LOT 79



DAM OF LOT 79

MADER ROYALTY 800J

31 May 2021 • MDR 800J • BPG1393888

Homo Polled, Hetero Black

EPD	EPDs					Carcass EPDs							
	CE	BW	WW	YW	Milk	MCE	MWW	API	TI	CWT	REA	Fat	Marb
Breed Rank	5.2	6.1	94.5	137.2	25.6	1.7	72.9	104.1	76.4	36.9	1.08	-0.11	-0.09
	75	90	3	10	65	85	25	75	15	15	10	50	65

Leptin Testing					CE			
BW	205 Wt.	Jan 5 Wt.	ADG	WPDA	Leptin	PMCH	IGF2	CRH4
86	719	1785	3.10	3.06	CT	AA	CC	CG

-This is a big strapping bull, pushing the scale down as the heavyweight, offering added length and frame
 -The Dynasty progeny have been noted for their mass and rib shape, good feet, and extra maternal excellence added with the great Sage 506C backing him
 -His dam is a favorite, so deep bodied and easy keeping, an impeccable udder, and a sound foot and leg
 -As you will note, it is hard to compare performance data between yearlings and these older bulls, as the management system becomes very different with these extra age bulls sucking on their dams most of the winter months
 -This guy does however rank high for weaning weight and yearling weight real data

80

BGS/BM CAPTAIN SCREAM 63D

SIRE: SVS BETTS 808F

WFL RED SAGE 506C

CG BLACK NUGGET 25N

DAM: CG BLACK OPAL 652S

CG BLACK OPAL 214 M



DAM OF LOT 80



MATERNAL BROTHER OF LOT 80

MADER TAKEDOWN 807J

5 June 2021 • MDR 807J • BPTG1394696

Homo Polled, Hetero Black

EPD	EPDs					Carcass EPDs							
	CE	BW	WW	YW	Milk	MCE	MWW	API	TI	CWT	REA	Fat	Marb
Breed Rank	7.4	4.7	86.6	125.9	24.7	5.9	68.0	108.1	73.6	32.2	0.91	-0.11	-0.09
	50	70	15	20	70	25	45	60	30	30	40	45	65

Leptin Testing					CE			
BW	205 Wt.	Jan 5 Wt.	ADG	WPDA	Leptin	PMCH	IGF2	CRH4
84	756	1655	2.71	2.86	TT	AT	CC	CC

-Another black bull pushing the scale down and offering more physical and genetical power and performance
 -His Opal 652S dam is a legend here, having over 100 calves registered to her name, many of which have been high sellers and standouts
 -This bull can really travel around the pen with ease, he is more standoffish in the group, and tends to be more scared when singled, but if you have the room and the management to handle him, he should do a hell of a job raising calves
 -His full brother sells as lot 26, and his full brother sold last year to Blueridge Colony

81

TNT 90 PROOF Z401

SIRE: WFL WESTCOTT 24C

WFL SWEET LICIOUS 1044X

MADER P BLACK IRONMAN 22U

DAM: MADER P IRON SUGAR 7X

LFE FAMOUS 632T



SIRE OF LOT 81



DAM OF LOT 81

MADER BARSTOOL 829J

16 June 2021 • MDR 829J • BPTG1399474

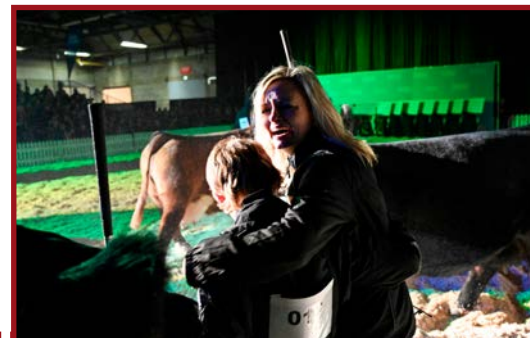
Homo Polled, Hetero Black

	EPDs					Carcass EPDs							
	CE	BW	WW	YW	Milk	MCE	MWW	API	TI	CWT	REA	Fat	Marb
EPD	4.9	4.6	93.1	140.7	25.4	1.6	71.9	111.3	79.3	38.7	1.2	-0.09	-0.01
Breed Rank	80	70	4	4	65	85	25	50	10	10	1	90	35

Leptin Testing								
BW	205 Wt.	Jan 5 Wt.	ADG	WPDA	Leptin	PMCH	IGF2	CRH4
88	645	1660	3.07	2.92	CT	AA	CC	CG

CE
☆☆

-A healthy cross between Westcotts power, and Ironsugars calving ease and eye appeal
-This bull is a beast in terms of his shear sogginess, body mass, width of chest, and muscle throughout
-Ironsugar 7X continues to rise to the top of our program, and as you look through multiple pedigrees, you still see her or her lucrative daughters shining through
-He ranks I the top 4% for WW, YW, and Docility



82

HPF QUANTUM LEAP Z952

SIRE: WLE COPACETIC E02

CMFM JOY 02ZB

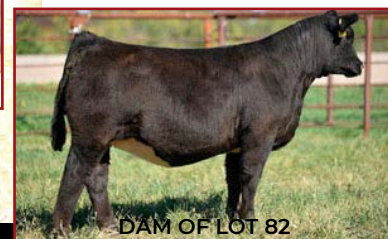
NGDB STRUCTURE 34D

DAM: RUST LINDA 9563G

R&R MISS CUT ABOVE Y127



SIRE OF LOT 82



DAM OF LOT 82



Lot 82

C-D MADER **PRIME** 1331*Homo Polled, Homo Black*

9 September 2021 • BOHR 531J • BPTRS1392602 • 3/4 Blood

EPD	EPDs					Carcass EPDs							
	CE	BW	WW	YW	Milk	MCE	MWW	API	TI	CWT	REA	Fat	Marb
Breed Rank	9.8	2.0	79.7	118.5	21.0	5.7	60.9	115.1	74.5	23.2	0.75	-0.09	0.16
	25	25	35	35	90	30	80	40	25	70	85	70	4

-A very outcross pedigree in this calving ease prospect
 -He ranks in the top 25% for CE and BW, with just a small 78lb birthweight
 -He is small skulled, very extensive in his neck, smooth shouldered and light boned, yet still has adequate substance and hip structure all on a very sound skeleton
 -His full sister recently sold for \$13,000 in Canadian Donors production sale

Leptin Testing					CE
BW	205 Wt.	Jan 5 Wt.	ADG	WPDA	
78	805	1500	3.27	3.18	☆☆☆

PENDING

83

PROFIT

SIRE: TL LEDGER

MISS STAR ABOVE

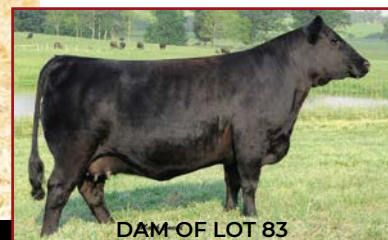
LF DREAM DOCTOR

DAM: SVF ABOVE & BEYOND T87

NLC ABOVE & BEYOND P84



SIRE OF LOT 83



DAM OF LOT 83

C-D MADER **OUTLIER** 1711*Homo Polled, Homo Black*

12 September 2021 • BOHR 511J • BPTRS1392716 • 3/4 Blood

EPD	EPDs					Carcass EPDs							
	CE	BW	WW	YW	Milk	MCE	MWW	API	TI	CWT	REA	Fat	Marb
Breed Rank	11.3	1.5	82.6	126.8	22.1	5.8	63.4	107.1	75.7	29.3	0.89	-0.08	0.10
	15	15	25	20	85	30	70	65	20	40	45	95	10

-Another calving ease sire with a different genetic twist to his pedigree
 -You won't find one much smoother designed in that front third, still carrying some natural shape and softness, and being very athletic from the ground up
 -He ranks in the top 15% for CE and BW, with just an 89lb BW
 -His full sister just recently sold for \$15,000 to LA Ranch, and a full brother last year brought \$7500 to Mike LeBlanc

Leptin Testing					CE
BW	205 Wt.	Jan 5 Wt.	ADG	WPDA	
89	810	1445	3.20	3.07	☆☆☆

PENDING

84

NCB COBRA 47Y

SIRE: MADER WALK THIS WAY 224B
MADER P IRON SUGAR 7X

LFE HEAVY HITTER 352C

DAM: MADER OPAL 29F

CG BLACK OPAL 652S



MATERNAL SISTER OF LOT 84



SIRE OF LOT 84

MADER **NO EXIT** 832J*Homo Polled, Homo Black*

18 June 2021 • MDR 832J • BPG1393903

	EPDs					Carcass EPDs							
	CE	BW	WW	YW	Milk	MCE	MWW	API	TI	CWT	REA	Fat	Marb
EPD	8.3	1.6	83.1	126.9	21.0	6.5	62.6	124.8	80.0	34.8	0.90	-0.10	0.11
Breed Rank	40	20	25	20	90	20	75	15	5	20	45	70	10

	Leptin Testing					CE
	BW	205 Wt.	Jan 5 Wt.	ADG	WPDA	
	86	613	1400	2.44	2.47	☆☆☆

	Leptin Testing				CE
	Leptin	PMCH	IGF2	CRH4	
	CT	AT	CC	CG	☆☆☆

-Another bull we would strongly recommend as a calving ease sire based on his build and his many times proven pedigree that has flat out worked
 -He is very small headed and clean shouldered, carries good width over the top, and is more linear in his makeup
 -Walk This Way sires very modest birthweights, successfully being used on heifers year after year here, and the Opal cow family offers so much maternal excellence

85

LFE THE RIDDLER 323B

SIRE: MADER THE NATIONAL 43E
LFE BS VIOLET 641A

NCB COBRA 47Y

DAM: MADER SUGAR CRUSH 213B
MADER P IRON SUGAR 7X

LOT 85



PATERNAL GRANDSIRE

MADER **AGAINST ALL ODDS** 861J*Homo Polled, Homo Black*

2 August 2021 • MDR 861J • BPG1393913

	EPDs					Carcass EPDs							
	CE	BW	WW	YW	Milk	MCE	MWW	API	TI	CWT	REA	Fat	Marb
EPD	10.5	2.0	86.8	137.5	25.2	8.5	68.6	127.9	80.1	34.8	0.99	-0.07	0.00
Breed Rank	20	25	15	10	65	5	40	10	5	20	20	100	30

	Leptin Testing					CE
	BW	205 Wt.	Jan 5 Wt.	ADG	WPDA	
	81	639	1420	2.53	2.73	☆☆☆

	Leptin Testing				CE
	Leptin	PMCH	IGF2	CRH4	
	TT	AA	CC	CC	☆☆☆

-A stacked pedigree utilizing the Riddler, National, and Violet on the top side, and incorporating in Cobra and Ironsugar on the bottom
 -This bull reminds me a lot of what Walk This Way looked like at sale time a few years back, big eared, proud fronted, so much capacity in the lower rib, a nice stout quarter, with piles of hair
 -Lots of calving ease bred into this bull, and an 81lb BW, and ranking in the top 20% for CE and BW, he should work great in the heifer pen or first calvers, or on cows that you need to bring down the avg BW

86

LFE THE RIDDLER 323B

SIRE: MADER THE NATIONAL 43E
LFE BS VIOLET 641A

MADER PS POWER SURGE 1X

DAM: MADER FRIDAY NIGHT 151D
ANGUS/ANGUS

MATERNAL BROTHER OF LOT 86



LOT 86

MADER SATURDAY NIGHT 839J

26 June 2021 • MDR 839J • BPRS1399476 • 3/4 Blood

Homo Polled, Homo Black

	EPDs					Carcass EPDs							
	CE	BW	WW	YW	Milk	MCE	MWW	API	TI	CWT	REA	Fat	Marb
EPD	8.0	3.1	82.4	137.4	24.0	4.6	65.2	110.2	72.7	41.7	0.90	-0.05	0.07
Breed Rank	45	40	30	10	75	45	60	55	35	5	45	100	15

Leptin Testing									CE
BW	205 Wt.	Jan 5 Wt.	ADG	WPDA	Leptin	PMCH	IGF2	CRH4	
80	619	1465	2.66	2.63	CT	AT	CC	CG	☆☆☆

-He will impress many with how much muscle, top, and middle he really has
 -He is a replica of what the National sire looks like, and if he breeds anything like his daddy, he will make you \$\$\$
 -A big foot underneath him, a good temperament, and just so darn easy to love
 -His dam stems from the performance sire, Powersurge, who left us with daughters that have great ability to milk and wean off the big calves

87

LFE THE RIDDLER 323B

SIRE: MADER THE NATIONAL 43E
LFE BS VIOLET 641A

SS EBONYS INTUITION 802

DAM: MADER OPAL 116Z
CG BLACK OPAL 652S

MATERNAL BROTHER OF LOT 87



LOT 87

MADER VENGEANCE 838J

26 June 2021 • MDR 838J • BPG1393905

Homo Polled, Hetero Black

	EPDs					Carcass EPDs							
	CE	BW	WW	YW	Milk	MCE	MWW	API	TI	CWT	REA	Fat	Marb
EPD	11.3	2.4	84.4	130.6	25.2	7.7	67.4	133.1	78.8	39.5	1.02	-0.08	0.03
Breed Rank	15	30	20	15	65	10	50	4	10	10	15	95	20

Leptin Testing									CE
BW	205 Wt.	Jan 5 Wt.	ADG	WPDA	Leptin	PMCH	IGF2	CRH4	
75	605	1380	2.50	2.47	TT	TT	CC	CC	☆☆☆

-Heifer bull here, with the age advantage to cover more females
 -75lb BW, top 15% for CE and MCE, and top 30% for BW
 -Smooth made from head to tail, very docile, has a big haircoat, and carries The Nationals natural guts
 -Cow is a big bodied Opal daughter who is still raising the good ones at 11 years old

88

LFE THE RIDDLER 323B

SIRE: MADER THE NATIONAL 43E

LFE BS VIOLET 641A

MADER P BLK RANSOM 23U

DAM: MADER BLACK TIDE 143Z

MISS BLACK GOLD 55S



MATERNAL BROTHER OF LOT 88



MATERNAL GRANDSIRE

MADER BACK ALLEY 864J

9 August 2021 • MDR 864J • BPG1393914

Homo Polled, Homo Black

EPD	EPDs					Carcass EPDs							
	CE	BW	WW	YW	Milk	MCE	MWW	API	TI	CWT	REA	Fat	Marb
Breed Rank	9.8	2.0	84.5	135.0	23.3	7.0	65.6	124.1	77.4	40.6	0.90	-0.08	-0.04
	25	25	20	10	80	15	60	15	10	10	45	95	45

Leptin Testing					CE			
BW	205 Wt.	Jan 5 Wt.	ADG	WPDA	Leptin	PMCH	IGF2	CRH4
79	616	1360	2.48	2.65	CT	AA	CC	CC

-Another heifer bull here that is moderate in his frame, but mighty in his volume and muscle definition

-79lb BW, top 25% for CE and BW, yet still in the top 20% for WW, YW, API, and TI

-He too is raised on an 11 year old cow who has been a solid producer over the years

-This bull is more standoffish with others, and seems to want to keep his distance when singled out, if you have the room to give him his space, and not looking for a pet, he won't cause a problem

89

LFE THE RIDDLER 323B

SIRE: MADER THE NATIONAL 43E

LFE BS VIOLET 641A

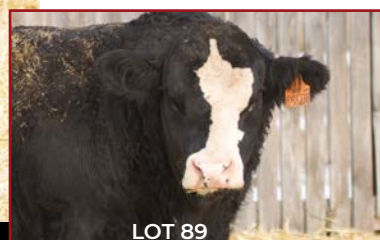
SVS MILWAUKEE 53A

DAM: SVS BLK LIZZY 533C

REMINGTON HSF/HS LIZZY 43



DAM OF LOT 89



LOT 89

MADER CONTRACTOR 848J

22 January 2022 • MDR 848J • BPG1393908

Homo Polled, Hetero Black

EPD	EPDs					Carcass EPDs							
	CE	BW	WW	YW	Milk	MCE	MWW	API	TI	CWT	REA	Fat	Marb
Breed Rank	9.3	3.4	84.4	134.7	24.9	6.9	67.1	122.0	76.2	37.9	1.03	-0.08	-0.03
	30	45	20	10	70	15	50	20	15	15	15	95	40

Leptin Testing					CE			
BW	205 Wt.	Jan 5 Wt.	ADG	WPDA	Leptin	PMCH	IGF2	CRH4
84	613	1485	2.66	2.77	TT	AA	CC	CG

-A black baldie bull that could be used on heifers or cows

-His stats all point towards calving ease, with a low birthweight and EPDs that show him in the top 30% for CE

-He is flat shouldered, light boned, and so smooth in his makeup

-His dam was purchased for \$13,000 as a top bred heifer, and has done a good job producing

90

SPRINGCREEK LINER 56U

SIRE: IPU BLACK CINCH 95G

TRI-R MS BLAKE 33B

LFE THE RIDDLER 323B

DAM: MADER SHEILA 46E

LFE BS SHEILA 82A



SIRE OF LOT 90-93



MATERNAL GRANDDAM

MADER PANAMA 826J

Homo Polled, Homo Black

15 June 2021 • MDR 826J • BPG1393899

	EPDs					Carcass EPDs							
	CE	BW	WW	YW	Milk	MCE	MWW	API	TI	CWT	REA	Fat	Marb
EPD	4.6	5.3	92.9	143.5	25.9	3.7	72.4	113.0	75.4	41.1	0.99	-0.09	-0.13
Breed Rank	80	80	5	3	60	60	25	45	20	10	20	75	80

Leptin Testing									CE
BW	205 Wt.	Jan 5 Wt.	ADG	WPDA	Leptin	PMCH	IGF2	CRH4	
85	611	1460	2.60	2.57	CT	AA	CC	CC	☆☆

-A cow bull with extra width throughout and is very muscular in his type
 -We unfortunately lost his dam this summer, as she was a favorite Sheila daughter that milked heavy and was a front pasture cow you loved to look at
 -This bull is backed by some great genetics that have worked very well in the breed, so utilize his extra size and maturity to cover more cows

91

SPRINGCREEK LINER 56U

SIRE: IPU BLACK CINCH 95G

TRI-R MS BLAKE 33B

LFE HEAVY HITTER 352C

DAM: MADER OPAL 55E

MADER BLACK OPAL 1Y



MATERNAL BROTHER OF LOT 91



LOT 91



SIRE OF LOT 91

MADER LOST CITY 802J

Homo Polled, Homo Black

2 June 2021 • MDR 802J • BPG1393890

	EPDs					Carcass EPDs							
	CE	BW	WW	YW	Milk	MCE	MWW	API	TI	CWT	REA	Fat	Marb
EPD	3.9	5.4	84.7	129.0	22.3	2.9	64.7	105.7	70.5	41.8	0.99	-0.10	-0.10
Breed Rank	85	85	20	15	85	70	65	70	45	5	20	60	70

Leptin Testing									CE
BW	205 Wt.	Jan 5 Wt.	ADG	WPDA	Leptin	PMCH	IGF2	CRH4	
75	549	1545	2.95	2.67	CT	AT	CC	CC	☆☆

-Black baldie bull sired by the \$50,000, IPU Cinch
 -We utilized Cinch in our program to get some Springcreek 56U influence in our blood, and because we were shooting for more blaze face bulls
 -His dam actually raised this bull and his brother from birth to weaning, milking heavy while still upholding a solid body score
 -I admire the dam for her balanced udder, the typical Opal foot she has under her, and her easy fleshing ability

92

SPRINGCREEK LINER 56U

SIRE: IPU BLACK CINCH 95G

TRI-R MS BLAKE 33B

LFE HEAVY HITTER 352C

DAM: MADER BLACKGOLD 60F

MADER BLACKGOLD 139A



DAM OF LOT 92



MATERNAL GRANDSIRE

MADER UNCHARTED 821J

13 June 2021 • MDR 821J • BPG1393898

Homo Polled, Homo Black

	EPDs					Carcass EPDs							
	CE	BW	WW	YW	Milk	MCE	MWW	API	TI	CWT	REA	Fat	Marb
EPD	3.9	5.0	75.2	117.0	22.1	2.8	59.7	104.4	65.5	38.3	1.00	-0.10	-0.10
Breed Rank	85	75	55	40	85	70	85	75	80	10	20	70	70

Leptin Testing									CE
BW	205 Wt.	Jan 5 Wt.	ADG	WPDA	Leptin	PMCH	IGF2	CRH4	
84	639	1545	2.80	2.71	CC	TT	CT	CC	☆☆

-Probably the widest pin, largest stifled bull in the pen, that shows extra width over his top and lots of thickness and depth of body
 -For his power, I admire how he still moves like a cat on a big foot
 -His dam is a typical Heavy Hitter female, big pinned as well, heavy muscled, problem free, and raises the big calves we hope for
 -This bull would tend to be more frightened when singled out, but behaves fine with his pen mates. He will not be your pet, but if you give him his room, he will give you yours

93

SPRINGCREEK LINER 56U

SIRE: IPU BLACK CINCH 95G

TRI-R MS BLAKE 33B

LFE HEAVY HITTER 352C

DAM: MADER OPAL 55E

MADER BLACK OPAL TY



SIRE OF LOT 90-93



MATERNAL GRANDDAM

MADER PROJECT 803J

2 June 2021 • MDR 803J • BPG1393891

Homo Polled, Homo Black

	EPDs					Carcass EPDs							
	CE	BW	WW	YW	Milk	MCE	MWW	API	TI	CWT	REA	Fat	Marb
EPD	3.9	5.4	84.7	129.0	22.3	2.9	64.7	105.6	70.5	41.8	0.99	-0.10	-0.10
Breed Rank	85	85	20	15	85	70	65	70	45	5	20	60	70

Leptin Testing									CE
BW	205 Wt.	Jan 5 Wt.	ADG	WPDA	Leptin	PMCH	IGF2	CRH4	
77	560	1510	2.82	2.61	CT	AT	CC	CC	☆☆

-A long spined bull here with that great chrome face
 -His dam raised both his twin brother and he from birth to weaning, so take note of their lighter weaning weights
 The Cinch progeny have extra frame and performance, and backed by a great Opal daughter, adds good maternal traits

Cattle Shows 2022







Dr. Waylon Wise

1626 Railway Street
Box 288
Crossfield, AB
T0M 0S0

Office: (403)946-4567
Cell: (403)369-8823
Fax: (403)946-5529
drwwise@gmail.com



Office: 403-335-8042
Niall: 403-507-3432
Grant: 403-994-1882

Site 16 Box 18 RR1
Didsbury, AB
T0M 0W0

nrichmondrepairs@gmail.com
www.richmondequipment.ca

Israelson Forage Inc.

Chris Israelson
Box 231
Didsbury, AB
T0M 0W0
403.994.0561

Brittany McAllister

Relationship Manager
ATB Business Banking

Mobile 403-875-1200
bmcallister@atb.com

4962 50 Street
Innisfail, AB T4G 1S7

Brandi-Rae Mandel

Account Officer
Office 587-219-0254
bmandel@atb.com

atb.com

Scott Dickson, CA
DIRECTOR
LIVESTOCK SERVICES

DIRECT 403.356.1250
PH. 403.346.8878
FAX 403.341.5599
TOLL FREE 1.877.500.0779

4922 - 53 St.
Red Deer, AB
T4N 2E9
scott.dickson@mntp.ca
mntp.ca



Member of Praxity, aisa
Global Alliance of Independent Firms



KODIAK BBQ

Tom Jackson
403.638.7321

CASUAL LABOUR INC.

LINDSEY STECYK

403.850.8654

Box 412
Crossfield, AB T0M 0S0

Specializing in Farm
Buildings

lindseystecyk@gmail.com



DAN KEMMERE 403-994-2222
TYSON GARDNER 403-586-1598
TYKEMELECTRIC@GMAIL.COM

RESIDENTIAL COMMERCIAL INDUSTRIAL MAINTENANCE



BULLSEYE

DOUG ROXBURGH
Beef Consultant
Mobile: 403-392-4541
Office: 1-833-210-8100, x228
Email: doug.roxburgh@bullseyefeeds.ca

Dale Schaeffer
President
dale@westernlitho.ca
Direct: 306.546.7430
Cell: 306.537.5664



Bus: 306.525.8796
or 1.877.475.4846
Fax: 306.565.2525
www.westernlitho.ca

300 Dewdney Avenue
Regina, SK S4N 0E8

Davis-Rairdan

P.O. Box 590
Crossfield, Alberta
Canada T0M 0S0
Phone (403)946-4551
Fax (403)946-5093

Website
davis-rairdan.com
email
embryos@davis-rairdan.com



Tanya Van Otterloo

Relationship Manager
Directrice des relations d'affaires

C 403-415-6217 T 403-556-8177 tanya.vanotterloo@fcc-fac.ca
350-6900 46th Street Olds AB T4H 0A2
Customer Service Centre / Centre de service à la clientèle 1-888-332-3301

Thank-you to our 2022 Buyers

Severtson Land & Cattle
Blue Ridge Colony
Craigmyle Colony
Gadsby Farming
Parkland Colony
Plain Lake Colony
Pleasant Valley Colony
Stahlville Colony
Valleyview Ranch
Wolf Creek Colony
Y2 Cattle Co
Ken & Chris Bellamy
Northern Light Simmentals
Bohrson Marketing
Hoegl Farms Ltd
ALM Ranch
Lyle Motley
Danny & Charolette Corbett
Darwin Casebeer
William Predonchuk
Bert's NR Simmentals
Rob Scott
Bar 9 Simmentals
Bignell Cattle Co
Bourhis Ranch Ltd
Brody Slykhuis
Cory Campbell
Rockin' G Ranch
Chris Lepage
Dakota Beazer
Campstool Cattle Co

Dana & Megan Johns
Hunt Legacy Farms
Devin Sengaus
Dodge City Simmentals
Doug Fletcher
Downhill Simmentals
Dunstall Farms
Ferme Christel
Flying V Cattle
Gehl Ranch
GW Murray Ranches Ltd
Hillabide Creek Farm
Les Isaac
Jensen Simmentals
Johnson Farm Simmentals
Kampen Cattle Co.
KCH Cattle Co
Keith Heppler
L & J Murray Ranches
Labatte Simmentals
BarDown Cattle Co
Matthew Rumour
McLaughlin AG Ventures
Mike LeBlanc
Newsome Farms
Peter Coenen
Pracker Ag LTD
Dave Prodonchuk
Rafter 4T Farms
Jon Rairdan
Richard Steed

Rick & Val Leibel
Riversedge Ranch
RJS Land & Cattle Co Inc.
Rob Tindal
Rockport Colony
Rod Polukoshko
Shawn Schick
Sjogren Farms
Steve Black
Darren Stoneman
Sunderman Farm
Tandem T Farms
Tara Rudkowsky
Tracy Toney
Kelsey Vandervalk
Wagner Martens
Wayne & Sharon Starchinsky
Wayne Young
Westman Farms
Heistad Ranch
Johnson Land & Cattle
Maxwell Simmentals
Ferme Gagnon
Black River Farms
KT Ranches
Doll Simmentals
Starland Colony
JK Bar Ranch
Fletcher Cattle Co.

Terms & Conditions

TERMS: The terms of the sale are cash or cheque payable at par. Settlement to be made immediately after the completion of the sale. The right of property shall not pass until after settlement is made. All settlements must be made with the clerk of the sale before any cattle will be released. All monies are in Canadian funds.

BIDS: Every animal entering the sale ring will be sold to the highest bidder.

DISPUTES: In cases of disputes, bidding will be reopened between the parties involved. If no further bid is made, the buyer will be the person from whom the auctioneer accepted the last bid. The auctioneer's decision is final.
ANNOUNCEMENTS: All announcements made from the auction block will take precedence over the printed matter in the catalogue. Buyers are therefore cautioned to pay close attention to any such announcements.

INSURANCE: Will be available sale day. Animals become the property of the buyer as soon as sold. Bulls to be wintered must be insured.

SHIPPING: Assistance will be given in arranging trucking after the sale but no risk is assumed by the Auctioneer or Seller. Expenses incurred are the responsibility of the purchaser. Purchasers are requested to furnish shipping instructions when making settlement. If you need assistance please contact the seller.

CERTIFICATE OF REGISTRY: Registration or recordation papers will be transferred to the new owner if requested at time of payment. Cattle will not be transferred until paid for in full.

SEMEN RESERVE: The seller reserves the right to draw semen on any bull in the sale for in herd use only at the cost of the seller and prior to delivery.

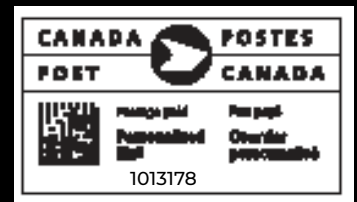
ACCIDENTS: Although every precaution will be taken to protect the safety and comfort of buyers, neither the sale manager, nor the auctioneer assume any responsibility in this matter and disclaim any liability, legal or otherwise, in the event of accident or loss of property.

LIABILITIES: All persons attending the sale do so at their own risk and sellers assume no liability, legal, or otherwise, for any accidents occurring in or about the premises.

EXPORT TESTING: Required health certificates for cattle being exported will be provided.

BREEDING GUARANTEE: All animals are guaranteed to be satisfactory breeders in accordance with the respective breed association bylaws. No guarantee is given a bull's semen will freeze. Any female that is subject to embryo transplant shall cause this guarantee to be null and void. Guarantee does not apply to animals who after the sale are not properly handled and cared for, or injured or sick. They cannot be returned to us if not in a sound, healthy condition. At no time shall the seller's liability exceed the purchased price of the animal.

RIGHTS & OBLIGATIONS: The above terms & conditions of the sale shall constitute a contract between the buyer & seller & be equally binding to both. Resale of animals following purchase in this sale shall constitute a separate transaction & the rights & obligations of the two parties connected thereto are not covered by the terms & conditions of this sale. In the event of default on any part of the terms & conditions covering this sale by either the buyer or the seller, it shall be the responsibility of the buyer or the seller to investigate any action necessary to bring about a fair settlement of any claims arising from this sale and to be responsible for any & all costs involved therein.



Request Return To:
Box 1 Site 12 RR2
Carstairs, AB T0M 0N0

Time Sensitive Material

