

2024 EDITION

MADER

Ranches

Ladies
NIGHT

BRED FEMALE SALE

10.17.2024

On The Ranch - Carstairs, AB

5 PM

WELCOME 2024 EDITION

Similar to the past 4 years of Ladies Night, our cow numbers of around 300 head, are at a point that minimal growth is required and realistic, so when it comes to growing out roughly 80 replacements each winter, we simply pair them up and say one stays, and one sells! We feel within the group of bred heifers, we are offering some of our very top end genetics and phenotypes, mated to some of the best bulls we can get our hands on! Along with the bred heifers, we spend a lot of time and effort within a year, mating embryos that are out of our best females, and the breeds leading AI sires! We wouldn't sell any females or embryos that we would not keep for our own use, and we feel that strengthens our offering! New this year on a small but mighty scale, we have offered 2 elite heifer calves that come from very exciting and proven donor cows, and what better way to showcase these calves, than displaying them as pairs for your appraisal! The use of heavy AI and embryo work throughout our program has allowed us to build a cowherd based around top donors that excel in production, foot and udder quality, and easy fleshing ability. We incorporate sires that have proven themselves within the industry, but we are also not afraid to try something new that has the genetic potential to strengthen the cow!

An October sale has simply works great for our program in terms of our workload and management, and we feel it benefits our customer when it comes to trucking of these live lots well in advance to calving, it allows most of the growth of these females to be done on green grass forage, it gives a more realistic picture of what these females look like in their working clothes, and is more beneficial to their longevity and health. We do not pamper our cowherd, and these females are expected to lay down and give you a live calf, they will thrive off of green grass and stubble, and are genetically bred to be easy fleshing and problem free cattle even within the harshest of winters we can see in this country! These females are included in a total herd health program, receiving the appropriate vaccines such as One Shot BVD, 8 way, and Ivomec. They have all been vaccinated two times with the following already, and our fall vaccinations do not take place until early November on bred females, so this allows you to get them home and onto your own protocols. We use a killed vaccination on bred females, and that is recommended on these sale bred to ensure the safety of the calf they are carrying. All of them have been ultrasounded and the most accurate breeding dates we can offer, are noted within their individual lots.

The cattle market is one of the most exciting sectors in agriculture to be in right now! Calf prices, fat prices, and cull prices are at an all time high, and there should be no reason to be hanging onto any problem or aged cattle this fall! Take your paycheck, and replace them with something new and fresh that will make you money! Although rain was more scarce this year, the reports coming in as a whole, is that the western provinces should still have more expected feed available than previous years, and with the projected cattle market stability, due to a lack of beef numbers in North America, it looks like we could have some great years in this beef market ahead!

We are a family based operation, and the same people you talk to about the cattle, are the same people that do the day to day activities on the farm! We know these cattle well, and would be happy to tour you through the offering and cowherd at anytime that works for you! We stand behind our product, and although we will work hard to gain your business, we will work harder to keep your business!

We hope we can host you, on the ranch, Thursday, October 17th! Cattle are available for viewing anytime that day or the day before, the sale starts at 5pm, and we will have supper, refreshments, and entertainment to follow! We ask that if you are unable to attend the sale that you contact us direct with any inquiries, or contact any of the names listed on our sale marketing team, of Bohrsen Marketing, to assist with any questions or bidding. The sale will be live on DLMS, and to find videos please stay tuned to our website, facebook feed, and on the DLMS website.

We are celebrating 40 years since Randy & Ronda bought the current farm we are located at! Also this night we celebrate the Ladies of our operation, please make sure to bring the Ladies of yours!

Sincerely,

Ryley

THE PEOPLE OF MADER RANCHES



RYLEY & JILL
STELLA & HAWKIN MADER
maderranches@gmail.com

Ryley's Cell: 403.807.8140

Jill's Cell: 403.990.9187

Ryley has been a part of the family operation from a young child and was joined by Jill in 2007. The kids are extremely important in daily tasks. We look forward to many years in the cattle industry.



RANDY & RONDA MADER
rrmader13@gmail.com

Randy's Cell: 403.660.1123

Randy & Ronda started Mader Ranches in 1974. They have worked hard in the cattle industry for 50 years and see all aspects of the operation from day-to-day, management & mentorship.



CONNER JOHNSTONE
Conner's Cell: 403.973.1876

Conner joined the team last summer. He manages the feed wagon, mechanics, and assists with daily cattle tasks and that makes him a huge asset to our operation.

SALE DAY INFORMATION

SCHEDULE

October 16th
October 17th

Viewing All Day
Viewing All Day
5 PM : SALE TIME

Followed by Steak Supper & Live Music

SALE STAFF

Auctioneer:	Ryan Dorran	403.507.6483
Ringmen:	Mark Stock	403.357.8104
	Rod Mcleod	403.540.7986

SALE MANAGEMENT

Bohrson Marketing Services Ltd.

Scott Bohrson	403.370.3010
Taylor Richards	306.821.4169
Darryl Snider	780.385.5561
Cody Haney	403.845.8806
Riley Bohrson	639.213.7777

www.bohrson.com



ACCOMODATIONS

Ramada - Olds	403.507.8349
Best Western Inn - Olds	403.556.5900
Didsbury Country Inn - Didsbury	403.335.8088
Golden West Motor Inn - Carstairs	403.337.3333

INCENTIVES

- **Payment due 1/2 down Sale Day & 1/2 Due Dec 31st.**
To allow customers to sell their own products before full payment is due.
- **5 % Junior Discount - 21 years of age or under**

WATCH, BID & BUY ONLINE

Internet Bidding Available

D | L | M | S
www.dlms.ca

For more information call DLMS:
Mark Shologan 780.699.5082 or
DLMS Purebred Team 780.991.3025

ON OFFER

36	Red & Black Simmental Bred Females
2	Open Heifer Calves
18	Embryos

SUPPLEMENTARY INFO

A supplementary sheet will be available on sale day.
This will include any updated information.

PHOTOS & VIDEOS

- Taken in house by Mader Ranches
- Can be viewed online at www.maderranches.com
- Pictures taken Aug 2024 & videos taken Oct 2024

TERMS & CONDITIONS

Cattle will sell under the standard terms and conditions put forward from the Canadian Simmental Association and from Mader Ranches. These are available upon request.

DISCLAIMER

While every effort has been taken to ensure that all details are correct, the descriptions contained in this catalogue are often opinion only. We cannot be responsible for the consequences of any actions taken or not taken as a result of these opinions.

HOW TO FIND US?

Directions From Carstairs:

Go North on Main Street (10th Ave) out of town, Road automatically turns west(Twp Rd 303).
Go West 15 kms to Range Road 32.
Turn South. Farm is on your right.

Directions From Hwy 22:

Go East 11 kms on Twp Rd 303 (Carstairs Blind Line) to Range Road 32.
Turn South. Farm is on your right.

FIND US ON GOOGLE MAPS - Mader Ranches





2 January 2023 • MDR 11L • PG1449686- • BW 85

EPDs

CE	BW	WW	YW	Milk	MC	MWW
10.0	3.0	106.3	157.1	26.1	6.2	79.3

MADER WALK THIS WAY 224B

SIRE: MADER WALK THE LINE 92J
IRCC DARLIN' 613D

Homo Polled

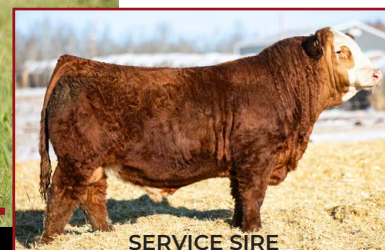
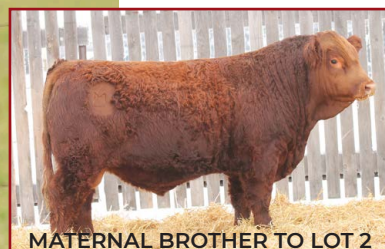
WFL TROJAN 63C

DAM: MADER TRANCE 68E
VIRGINIA MS ZANETA

HAND BRED TO MADER KISS THIS 93K ON JUNE 1ST. DUE MARCH 12TH

-The power red heifer in the offering with endless potential, she is the real deal, and would make a tremendous front pasture cow or donor female
-Many time proven champion with Grand or Reserve honors at many shows such as Olds Spring Classic, High Steaks Junior Beef, Synergy, and the World Show at YCS
-The udder and foot quality to this heifer are superb, she carries loads of rib shape and capacity, all while maintaining an extended and stylish front third
-With showing this female, she unfortunately dumped her first pregnancy due to stress, however we got her bred back for an early March calf to our elite walking herdsire, Kiss This, who combines the curve bending Proclamation with the famous Violet 49H female
OFFERING HALF INTEREST AND NO POSSESSION, OR BUYER HAS OPTION TO DOUBLE THE MONEY AND OWN HER ALL

Lot **2**



MADER TWINKLE 54L

6 January 2023 • MDR 54L • PG1449708 • BW 83

Homo Polled

EPDs						
CE	BW	WW	YW	Milk	MC	MWW
10.9	1.5	89.4	132.0	25.6	8.0	70.3

SIRE: MADER WALK THE LINE 92J
IRCC DARLIN' 613D

MADER WALK THIS WAY 224B

DAM: MADER TWINKLE 58C

MRL GAME CHANGER 12A

CROSSROAD TWINKLE 594T

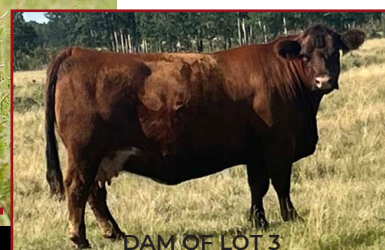
AI BRED TO WBC EASE 6L ON MARCH 20TH. EXPOSED TO MADER REBEL YELL 7K MARCH 26 - JUNE 10 - PREG CHECK SAFE TO AI - DUE JANUARY 1ST

-A personal favorite for a superior phenotype, and a cow family behind her that proves their worth year after year

-Her dam and granddam are some of our leading bull producers in the red section, and this was destined to be the first daughter retained, but we dedicated ourselves to offer the best

-She is fluid in her movement, very attractive, carries lots of rib and top shape, and is setting up a nice udder, she is bred to the new red baldie "Ease" sire, should be very profitable year one

Lot **3**



MADER RASPBERRY 111L

17 January 2023 • MDR 111L • PRS1449728 • BW 86

Homo Polled, 3/4 Blood

EPDs						
CE	BW	WW	YW	Milk	MC	MWW
11.0	2.0	100.2	151.9	24.5	7.5	74.6

SIRE: MADER WALK THE LINE 92J
IRCC DARLIN' 613D

MADER WALK THIS WAY 224B

DAM: MADER RASPBERRY 620G

MADER THE NATIONAL 43E

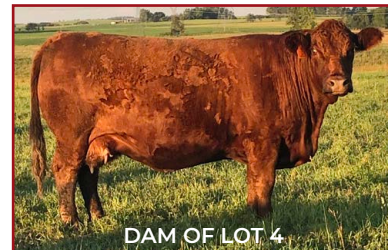
SIMMENTAL/ANGUS

EXPOSED TO MADER REBEL YELL 7K FROM MARCH 26 - JUNE 10. DUE JANUARY 20TH

-A female you really appreciate for her overall power and volume, she has a great udder suspension, lots of bone, good foot quality, broody in her design, yet pretty through her neck and head

-Her National dam is a beast, and full brother to this heifer was one of the highest weaning weight bulls this fall, 111L is a 3/4 blood female, bred to our Jr Herdsire Rebel, and the resulting calf

will be a purebred whether male or female



DAM OF LOT 4



MATERNAL BROTHER

MADER TAMMY 61L

8 January 2023 • MDR 61L • PG1449709 • BW 82

EPDs

CE	BW	WW	YW	Milk	MC	MWW
8.6	4.2	100.5	147.8	22.8	4.1	73.1

Homo Polled

MADER WALK THIS WAY 224B

LRX THE GODFATHER 141Z

SIRE: MADER WALK THE LINE 92J

DAM: MADER FAT TAMMY 13C

IRCC DARLIN' 613D

MADER LADY GOLD 131Y

AI BRED TO WBC EASE 6L ON MARCH 20TH. EXPOSED TO MADER REBEL YELL 7K MARCH 26 - JUNE 10
PREG CHECK SAFE TO AI - DUE JANUARY 1ST

- A dark red daughter of Walk The Line, and crossed onto a many time proven 9 year old Godfather daughter that has sold some great progeny over the years
- Loads of depth and spring of rib in this gal, beautiful udder attachment coming down, just an easy fleshing, easy doing brood cow in the making
- A mating to the calving ease specialist, Ease, an exciting opportunity to see a dark red baldy calf at side
- This female will flat out go out and produce for you



MADER FALLON 68L

8 January 2023 • MDR 68L • PG1449713 • BW 88

Homo Polled,

EPDs

CE	BW	WW	YW	Milk	MC	MWW
7.3	3.1	94.8	140.5	22.1	4.1	69.5

MADER WALK THIS WAY 224B

SIRE: MADER WALK THE LINE 92J

IRCC DARLIN' 613D

WFL WESTCOTT 24C

DAM: WHS FALLON 158F

LRX CHEYENNE 14U

AI BRED TO WBC EASE 6L ON MARCH 22ND. EXPOSED TO MADER REBEL YELL 7K MARCH 26 - JUNE 10 - PREG CHECK SAFE TO AI - DUE JANUARY 3RD

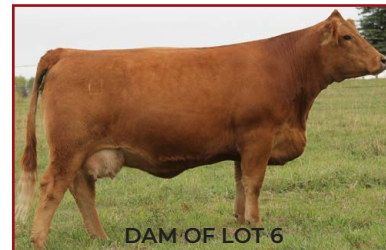
- A female that expresses a lot of depth and dimension to her. Her teet size and udder suspension are going to be second to none, and she is going to be a power machine in production
- The combination of Walk the Line and Westcott, adds power along with style to this girl, and she gains a lot of maternal greatness from the Darlin' 613D cow and the Cheyenne 14U donors
- Another mating to the new and exciting Ease sire, who is predicted to calve easy, and whose progeny should still tip the scales down come weaning



MATERNAL BROTHER



IRCC DARLIN' 613D



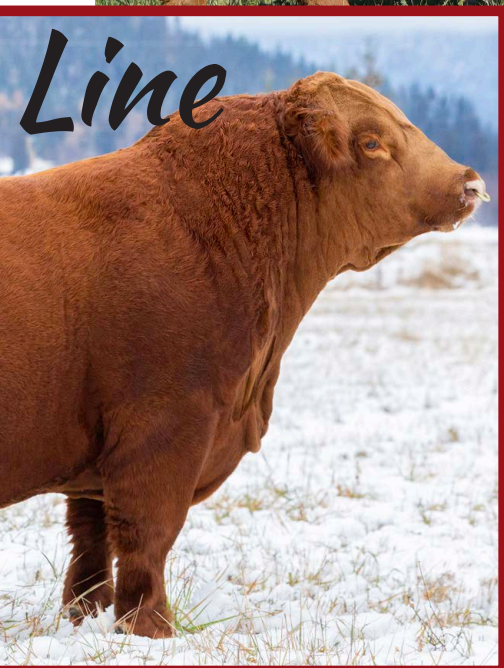
DAM OF LOT 6



MATERNAL SISTER OF LOT 6

Lot 6

MADER LADY 88L



12 January 2023 • MDR 88L • PTC1465545 • BW 82

EPDs

CE	BW	WW	YW	Milk	MC	MWW
11.4	1.0	97.2	142.3	28.2	8.8	76.8

Homo Polled

MADER WALK THIS WAY 224B

NCB COBRA 47Y

SIRE: MADER WALK THE LINE 92J

DAM: MADER LADY 50G

IRCC DARLIN' 613D

ERIXON LADY 202S

**AI BRED TO WBC EASE 6L ON MARCH 20TH. EXPOSED TO MADER REBEL YELL 7K MARCH 26 - JUNE 10
PREG CHECK SAFE TO AI - DUE JANUARY 1ST**

-A full sister sold in last years sale to Downhill Simmentals for \$15,000, and Everett says she and calf are beauties

-Her dam, Lady 50G, is a past high seller in Ladies Night, edition 1, to Ultra Livestock and JK Fraser for \$17,000

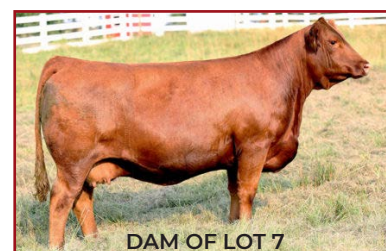
-50G's first year in production, she was National Champion female at CWA, making the top 10 in supreme, and her first son sold for \$38,000

-This female is well balanced from great feet, to a real nice udder, to being very athletic and broody

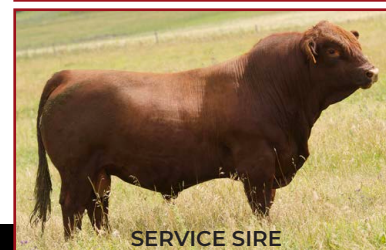


Lot 7

MADER POCAHONTAS 93L



DAM OF LOT 7



SERVICE SIRE

12 January 2023 • MDR 93L • PTC1437611 • BW 83

Homo Polled

EPDs

CE	BW	WW	YW	Milk	MC	MWW
10.2	2.0	97.8	142.5	25.6	7.1	74.5

MADER WALK THIS WAY 224B

SVS BROOKS 669D

SIRE: MADER WALK THE LINE 92J

DAM: IPU 2D POCAHONTAS 15F

IRCC DARLIN' 613D

IPU 105L POCAHONTAS 2D

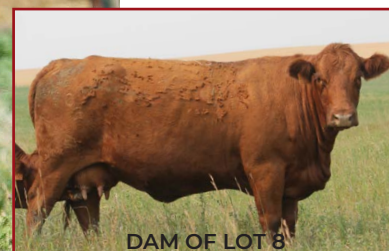
EXPOSED TO MADER REBEL YELL 7K MARCH 26 - JUNE 10 - DUE FEBRUARY 26TH

-This is the first daughter we have sold out of the \$27,000 IPU Pocahontas 15F donor female

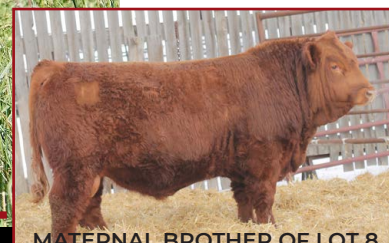
-She has her dams blood red color, is very nice through her skull and front third, and is very sound in her structure

-Service to the blood red Rebel sire, should leave you with a very marketable calf

Lot **8**



DAM OF LOT 8



MATERNAL BROTHER OF LOT 8

MADER SIERRA 37L

3 January 2023 • MDR 37L • PG1449699 • BW 84

Homo Polled

EPDs

CE	BW	WW	YW	Milk	MC	MWW
9.1	3.6	98.4	141.8	28.7	5.9	77.9

MADER WALK THIS WAY 224B

SIRE: MADER WALK THE LINE 92J

IRCC DARLIN' 613D

MADER FUGITIVE 35C

DAM: MADER SIERRA 30E

MADER HONEY BEE 16Z

EXPOSED TO MADER REBEL YELL 7K MARCH 26 - JUNE 10 - DUE FEBRUARY 20TH

-One of the most powerful WTL daughters based on length, scale, and width and depth of body and chest floor

-Very attractive, very quiet, and very broody in her make-up

-Her dam is big, deep ribbed female, who milks heavy and seems to always bring in a good one no matter what mated to, she will be an easy one to find sale day

Lot **9**



MATERNAL SISTER OF LOT 9



MATERNAL SISTER OF LOT 9

MADER MODERATION 42L

3 January 2023 • MDR 42L • PG1449701 • BW 92

Homo Polled

EPDs

CE	BW	WW	YW	Milk	MC	MWW
8.7	1.4	83.5	121.2	24.3	5.8	66.1

MADER WALK THIS WAY 224B

SIRE: MADER WALK THE LINE 92J

IRCC DARLIN' 613D

TNT GUNNER N208

DAM: MADER P MODERATION 32W

TH RED LASS 11N

EXPOSED TO MADER REBEL YELL 7K MARCH 26 - JUNE 10 - DUE FEBRUARY 26TH

-This is the last calf of the now deceased 15 year old, Moderation 32W, her first calf we sold at CWA, many high sellers in between, right up until her latest high seller of \$26,000 in the bull sale

-The maternal strength is in this girls blood, and with the dark red color, the black hoof, the great udder attachment, this girl will out and work

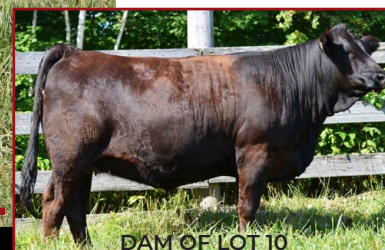
-The plan was to retain her all along, but with her aged dam needing to go to town early, she found her way into the "sale heifer" pen early on as an orphan

-She wont be the most powerful heifer sale day as a bit behind due to early weaning, but i would bet money she will be one of the best cows

Lot **10**



SERVICE SIRE



DAM OF LOT 10

MADER SHEILA 30L

3 January 2023 • MDR 30L • PG1449695 • BW 81

Polled

EPDs						
CE	BW	WW	YW	Milk	MC	MWW
11.3	1.2	88.0	128.5	27.4	5.4	71.4

SIRE: WLB BULL 52E 540G

MAR MAC UTAH WHISKY 52E

WLB 42Z GAILYN 411E

DAM: FGAF SHEILA 120H

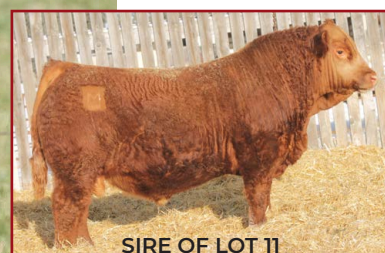
ANCHOR D RAPTOR 392C

BLACK GOLD MS SHEILA 113E

EXPOSED TO MADER REBEL YELL 7K MARCH 26 - JUNE 10 - DUE FEBRUARY 20TH

- A little different pedigreed here, as her sire is a half brother to the popular Top Tier sire, and her dam is a combination of one of the best fleck pedigrees combined with the Sheila 82A cow family
- We purchased her dam from Ferme Gagnon, and man did that young cow milk, weaning this calf off at 835lbs, and breeding back to an early AI service
- Serviced to the dark red Rebel sire, offers another unique pedigree, and should offer an outcross progeny
- She is deep flanked, has so much mid section, near perfect udder coming, and is so structurally sound. When we analyze this heifer, she just screams brood cow, and herdbull producer

Lot **11**



SIRE OF LOT 11



SERVICE SIRE

MADER OPAL 92L

12 January 2023 • MDR 92L • PG1449723 • BW 85

Homo Polled

EPDs						
CE	BW	WW	YW	Milk	MC	MWW
7.2	4.6	100.9	149.0	21.0	4.9	71.5

SIRE: MADER DISPATCH 25J

SVS BETTS 808F

MADER P MODERATION 32W

DAM: MADER OPAL 163H

MADER THE NATIONAL 43E

MADER OPAL 91F

AI BRED TO MADER FOLSOM PRISON 66L ON APRIL 3RD. EXPOSED TO MADER REBEL YELL 7K APRIL 6 - JUNE 10 - PREG CHECK SAFE TO AI - DUE JANUARY 13TH

- Always unique when we can incorporate the "Opal" and "Violet" cow families, into a red package
- We love the rib shape she has, the pin spread she expresses, the soundness from the ground up, and the docility
- Her sire is a past high selling Betts son for \$26,000, and his calves are consistent and impressive
- An early service to the \$52,000 Folsom Prison is exciting



Lot 12

MADER SUGAR 903K



DAM OF LOT 12



NIGHT SHIFT - SHAKEDOWN SON



SUGAR 48C



SHAKEDOWN SON



Shakedown

11 June 2022 • MDR 903K • BPG1445126 • BW 83

Homo Polled, Hetero Black

EPDs						
CE	BW	WW	YW	Milk	MC	MWW
4.9	4.7	90.9	128.1	13.3	4.0	58.8

NGDB STRUCTURE 34D

LFE HEAVY HITTER 352C

SIRE: RF SHAKEDOWN 074H

DAM: MADER SUGAR 96G

IPU MS. COWBOY CUT 135D

MADER SUGAR CANE 48C

AI BRED TO RUST GOOD TIMES ON MARCH 23RD. EXPOSED TO MADER KISS THIS 93K MARCH 26 - JUNE 10 - PREG CHECK SAFE TO AI - DUE JANUARY 4TH.

-A pen favorite to many who have toured, due to her overwhelming body capacity and rib shape
 -She is setting up a dandy udder, is up headed and proud, moves well, and will be a force in any herd she enters
 -Her dam is a maternal sister to the High Selling Mader Night Shift sire, that demanded \$100,000 in our 2023 bull sale
 -The Ironsugar 7X progeny continue to impress us, with their elite production, and willingness to be easy doing, low maintenance cattle
 -Mated early to the outcross Rust Good Times, should offer a different pedigree and compliment the features of this donor prospect



Lot **13**

MADER SHEILA 914K



SHAKEDOWN DAUGHTER



SHAKEDOWN DAUGHTER



SHEILA 82A



DAM OF LOT 13

16 June 2022 • MDR 914K • BPG1445130 • BW 87

Homo Polled, Homo Black

EPDs						
CE	BW	WW	YW	Milk	MC	MWW
5.3	6.1	108.8	150.2	21.7	3.2	76.1

NGDB STRUCTURE 34D
SIRE: RF SHAKEDOWN 074H
IPU MS. COWBOY CUT 135D

TNGL GRAND FORTUNE Z467
DAM: MADER SHEILA 54F
LFE BS SHEILA 82A

AI BRED TO MADER FOLSOM PRISON 66L ON MARCH 24TH. EXPOSED TO MADER KISS THIS MARCH 26 - JUNE 10 - PREG CHECK SAFE TO AI - DUE JANUARY 5TH

-Another absolute powerhouse type of female stemming from some awfully good genetics
-The Shakedown progeny have more than impressed us with their extra grow, mass, and correctness
-On the bottom side of this pedigree, you will note a Grand Fortune daughter, stemming from the great Sheila 82A donor cow
-She is bold in her rib, her udder should be flawless, her foot quality is next level, and she is so powerfully and pretty
-Mated to the Violet 49H son, Kiss This, will combine two of our best cow families



Interstate



2 January 2023 • MDR 14L • BPG1476304 • BW 83

EPDs

CE	BW	WW	YW	Milk	MC	MWW
10.1	2.5	78.5	124.5	22.4	5.2	61.7

Homo Polled, Homo Black

HART INTERSTATE 102E

MR HOC BROKER

SIRE: KWA INTERSTATE 203J

DAM: RCR MS KAY 10E

CROWE BUTTON 20E

RCR MS Keltie 3C

AI BRED TO MADER FOLSOM PRISON 66L ON MARCH 22ND. EXPOSED TO MADER KISS THIS MARCH 26 - JUNE 10 - PREG CHECK SAFE TO AI - DUE JANUARY 3RD

-A very attractive package that moves with ease, has that ideal blaze, and is truly impressive in the flesh
 -Her HOC Broker dam has been a great producer, and this would be her third daughter to sell through this sale, along with a powerhouse bull that demanded \$10,000 in the off year
 -Combine her lineage to the \$52,000 high selling Folsom Prison sire, and you will be looking at a baldy calf with endless potential



14 January 2023 • MDR 97L • PG1449725 • BW 78

Homo Polled, Homo Black

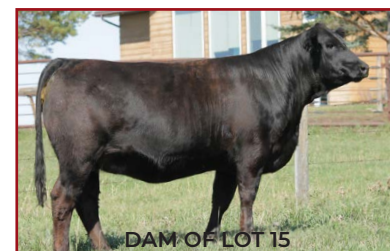
EPDs

CE	BW	WW	YW	Milk	MC	MWW
11.5	2.2	84.0	130.9	21.5	6.4	63.5

HART INTERSTATE 102E

SIRE: KWA INTERSTATE 203J

CROWE BUTTON 20E



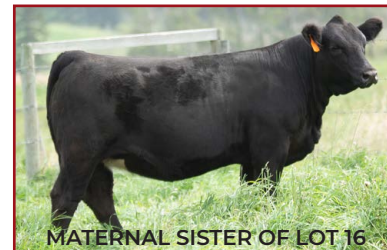
WS PROCLAMATION E202

DAM: MADER BLACKGOLD 6H

MADER BLACKGOLD 407E

EXPOSED TO MADER KISS THIS 93K ON MARCH 26 - JUNE 10 - DUE JANUARY 28TH

-Check out the outcross pedigree on the top side, sired by our recent herdbull purchase of KWA Interstate, for \$23,000
 -Interstates first sons sold this spring and were an impressive bunch, expressing his round muscle shape, his added volume and capacity, and his ability to travel with ease
 -This gals dam is a hard working daughter out of Proclamation, stemming back to the very proven Blackgold cow family.
 -Great teet size and placement, good docility, and one that should go out and make you money



Lot 16 MADER YARA 67L

8 January 2023 • MDR 67L • BPG1449712 • BW 82

EPDs						
CE	BW	WW	YW	Milk	MC	MWW
6.8	2.9	84.9	133.7	20.1	-0.3	62.6

HART INTERSTATE 102E

SIRE: KWA INTERSTATE 203J

CROWE BUTTON 20E

Homo Polled & Black Test Pending

R PLUS SWAYZE 7083E

DAM: W2 YARA 030H

W2 YARA 329F

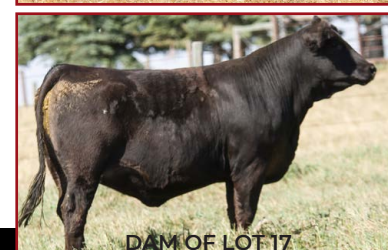
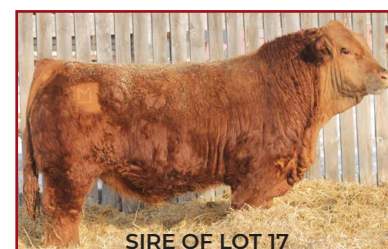
EXPOSED TO MADER KISS THIS 93K ON MARCH 26 - JUNE 10 - DUE JANUARY 23RD

-A moderate set, huge barrelled daughter of Interstate, crossed with an excellent daughter of R Plus Swayze

-This female is setting up to look just like her momma, easy fleshing, feminine made, sound structured

-Cross her the Violet 49H son, Kiss This, and her stoutness combined with his angularity and stretch should be a great combo

-Last years maternal sister sold to Corey Cambell



Lot 17 MADER A List 170L

14 February 2023 • MDR 170L • BPG1449742 • BW 81

Homo Polled, Hetero Black

EPDs						
CE	BW	WW	YW	Milk	MC	MWW
9.3	4.0	89.4	131.9	25.3	7.3	70.0

SIRE: MADER INFINITE 17J

MADER WALK THIS WAY 224B

MADER BLACKGOLD 34G

DAM: MADER A LIST 39J

SVS DYNASTY 915G

MADER A LIST 214B

EXPOSED TO MADER KISS THIS 93K ON MARCH 26 - JUNE 10 - DUE JANUARY 27TH

-One of the younger females in the offering, with one of the best looks, sired by a highlight Walk This Way son crossed onto a very powerful Dynasty first calver

-She is very complete from nose to tail, with lots of volume and rib, she is wide over top, stout in her chest floor, adequate boned onto a great foot

-This heifer will lay down and make you money



Lot **18**

MADER GOLDIE 75L

10 January 2023 • MDR 75L • BPG1476309 • BW 88

EPDs

CE	BW	WW	YW	Milk	MC	MWW
9.8	1.6	75.2	116.4	21.8	4.3	59.3

Homo Polled, Hetero Black

R PLUS YUMA 9087G

SSC SHELL SHOCKED 44B

SIRE: R PLUS MANDATE 1044J

DAM: RUSGOLD MS SCHOCKEM 3G

MISS R PLUS 4193B

BARLEE GOLDOCKS

AI BRED TO MADER THE ROOKIE 204K ON MARCH 23RD. EXPOSED TO MADER KISS THIS MARCH 26 - JUNE 10 - PREG CHECK SAFE TO AI - DUE JANUARY 3RD

- A personal favorite here, as she puts it all together, into an ideal structure
- Feminine, tanky bodied, broad chested, has a real nice leg and foot, is super docile, and will make a great matron cow
- Her dam was a passed high seller from Border City, and she has been successfully flushed with sons averaging around \$11,000
- A well proven pedigree with the \$160,000 Mandate sire on the top side, and the outcross Shell Shocked sire on the bottom
- Mated to our new curve bending herdsire, The Rookie, should provide good calving ease while still maintaining good growth



DAM OF LOT 18



MATERNAL BROTHER OF LOT 18

Mandate



Lot **19**

MADER KEEPSAKE 27L

3 January 2023 • MDR 27L • BPG1449693 • BW 80

Homo Polled, Hetero Black

EPDs

CE	BW	WW	YW	Milk	MC	MWW
8.5	2.8	75.2	113.4	17.3	3.2	54.9

R PLUS YUMA 9087G

LFE BS LEWIS 322U

SIRE: R PLUS MANDATE 1044J

DAM: MADER KEEPSAKE 31A

MISS R PLUS 4193B

ULTRA MS KEEPSAKE 24Y

AI BRED TO MADER THE ROOKIE 204K ON MARCH 24TH. EXPOSED TO MADER KISS THIS MARCH 26 - JUNE 10 - PREG CHECK SAFE TO AI - DUE JANUARY 4TH

- A broody made Mandate daughter onto one of our favorite Stubby daughters. She is very loose hided, expressing lots of power and boldness
- I can see her with a great big bull calf at side down the road, as her dam typically brings in a calf dam near the same size as her in the fall
- Mated to Rookie who was highlighted at the World Sale, where he will offer extra style, hair, and stretch



DAM OF LOT 19 & 2022 CALF



MATERNAL SISTER OF LOT 19



Lot 20

MADER OPAL 4L

1 January 2023 • MDR 4L • BPG1449679 • BW 88

EPDs						
CE	BW	WW	YW	Milk	MC	MWW
7.1	3.3	88.3	135.3	16.8	2.8	61.0

R PLUS YUMA 9087G

SIRE: R PLUS MANDATE 1044J

MISS R PLUS 4193B

Homo Polled, Homo Black

LCDR WITNESS 541C

DAM: MADER OPAL 127H

MADER OPAL 217C

AI BRED TO MADER THE ROOKIE 204K ON APRIL 3RD. EXPOSED TO MADER KISS THIS MARCH 26 - JUNE 10
PREG CHECK SAFE TO AI - DUE JANUARY 13TH

-A female with a lot of future to her, as she expresses many great qualities we seek

-Very stylish fronted, carries good thickness and depth throughout, has a great udder coming down, and is so structurally sound in her skeleton

-She goes back to the great "Opal" cow family on the bottom side, and I get repetitive in saying, they make awesome, problem free cows, that out produce themselves

-Bred to the new and exciting Rookie herd bull who one of the best sons we have produced out of Walk this Way



Lot 21

MADER HONEY 10L

1 January 2023 • MDR 10L • BPG1449685 • BW 81

EPDs						
CE	BW	WW	YW	Milk	MC	MWW
7.8	2.3	77.8	118.7	17.4	4.8	56.3

SIRE: R PLUS MANDATE 1044J

MISS R PLUS 4193B

R PLUS YUMA 9087G

MADER PEARL HARBOUR 149F

DAM: MADER HONEY 67H

MADER IRON HONEY 200C



MATERNAL GRANDDAM



SERVICE SIRE

AI BRED TO MADER THE ROOKIE 204K ON MARCH 23RD. EXPOSED TO MADER KISS THIS MARCH 26 - JUNE 10 - PREG CHECK SAFE TO AI - DUE JANUARY 3RD.

-An easy fleshing daughter out of the \$160,000 Mandate sire

-She expresses lots of length of spine, is sleek in her shoulder and neck extension, and is very fluid in her movement

-Her dam just weaned off one of the heaviest Night Shift sons this fall, and he will be a definite feature come spring



9 January 2023 • MDR 71L • BPG1449714 • BW 84

EPDs

CE	BW	WW	YW	Milk	MC	MWW
9.9	1.7	84.4	130.5	18.2	5.7	60.4

Homo Polled, Homo Black

R PLUS YUMA 9087G

LFE THE RIDDLER 323B

SIRE: R PLUS MANDATE 1044J

DAM: MADER SHEILA 54E

MISS R PLUS 4193B

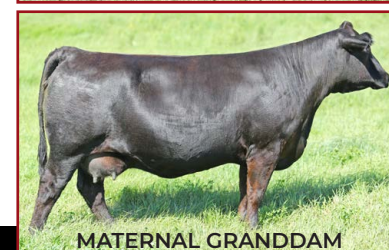
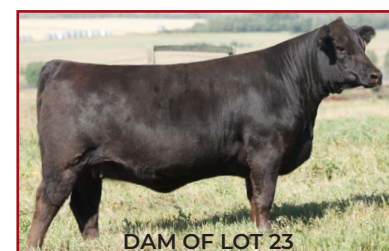
LFE BS SHEILA 82A

EXPOSED TO MADER KISS THIS 93K ON MARCH 26 - JUNE 10 - DUE JANUARY 13TH

-A descendant from the Sheila 82A cow family, and crossed with proven R Plus Mandate herdbull

-This female is setting up the same great udder we see from all the Sheila daughters, she moves well, and will be a hard working girl in production

-Mated to Kiss This, combines the Violet and Sheila cow families



27 January 2023 • MDR 141L • BPG1449735 • BW 79

Homo Polled, Hetero Black

EPDs

CE	BW	WW	YW	Milk	MC	MWW
9.7	2.2	79.4	115.0	15.9	3.6	55.6

TJSC BOONE PICKENS 46C

BGS/BM CAPTAIN SCREAM 63D

SIRE: MADER SON OF ANARCHY 144H

DAM: MADER MARY 93J

LFE BS SHEILA 82A

LFE BS MARY 113B

AI BRED TO MADER FOLSOM PRISON 66L MARCH 24TH. EXPOSED TO MADER KISS THIS MARCH 26 - JUNE 10 - PREG CHECK SAFE TO AI - DUE JANUARY 4TH

-A compact meat machine here that resembles her dams power and substance very well, her dam is a cow that milks heavy, is ideal in her design, and who just weaned off an 826lb bull calf

-The lineage on this heifer is cool, as her grandam was purchased out of the Cobra event quickly becoming a donor, selling two daughters the next year to Perkin Land and Cattle and Silver Lake Farms, and the mother to this heifer selling to Jeramie Heisted the next year

-We have also sold numerous full brothers to this heifers dam, multiple bulls bringing \$9-13,000. She is bred early to the \$52,000 Folsom Prison, a WTL x Violet 49H son



Lot 24

MADER OPAL 6L

1 January 2023 • MDR 6L • BPG1480336 • BW 82

EPDs						
CE	BW	WW	YW	Milk	MC	MWW
8.7	3.0	85.5	126.1	16.5	1.6	59.3

Homo Polled, Homo Black Test Pending

TJSC BOONE PICKENS 46C

LCDR WITNESS 541C

SIRE: MADER SON OF ANARCHY 144H

DAM: MADER OPAL 125H

LFE BS SHEILA 82A

MADER OPAL 217C

AI BRED TO MADER FOLSOM PRISON 66L MARCH 23RD. EXPOSED TO MADER KISS THIS MARCH 26 - JUNE 10 - PREG CHECK SAFE TO AI - DUE JANUARY 3RD

- A very feminine, well balanced daughter sired by the \$50,000 Son of Anarchy herdsire
- The SOA progeny are born small and vigorous and get up and grow
- Her dam is a beauty "Opal" daughter, who carries that flawless udder and foot design of all in the family
- Should be a quick ROI with her mated to Folsom Prison, he offers extra style, hair, and loads of structural soundness



Lot 25

MADER OPAL 919K

20 June 2022 • MDR 919K • BPG1445131 • BW 77

Homo Polled, Homo Black



EPDs						
CE	BW	WW	YW	Milk	MC	MWW
11.1	1.8	75.2	107.5	22.9	4.7	60.5

TJSC BOONE PICKENS 46C

SS EBONYS INTUITION 802

SIRE: MADER SON OF ANARCHY 144H

DAM: MADER OPAL 116Z

LFE BS SHEILA 82A

CG BLACK OPAL 652S

EXPOSED TO MADER KISS THIS 93K ON MARCH 26 - JUNE 10 - DUE FEBRUARY 26TH

- An extra age SOA daughter here, also stemming from the prolific "Opal" cow family, much like her sister above, she has a great foot, great teet placement, and is powerful in her makeup
- These extra age females will milk heavy, maintain body condition, and breed back early
- Kiss This offers great calving ease, and we were blown away with some of the weaning weights of his sons coming off first calves this fall

Lot **26**



SIRE OF LOT 26 & 27



SERVICE SIRE

MADER LADY 9L

1 January 2023 • MDR 9L • PG1449684 • BW 82

Homo Polled

EPDs						
CE	BW	WW	YW	Milk	MC	MWW
11.6	2.1	87.4	118.9	25.0	5.1	68.7

SIRE: WLB TOP TIER 456G
WLB 47Y FAE 343E

MAR MAC UTAH WHISKY 52E

MADER LIEUTENANT 50E

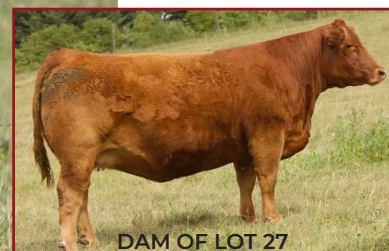
DAM: MADER LADY 7J

MADER LADY DAISY 547F

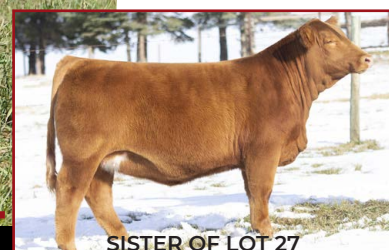
AI BRED TO MADER FOLSOM PRISON 66L ON MARCH 19TH. EXPOSED TO MADER REBEL YELL 7K ON MARCH 26 - JUNE 10 - PREG CHECK SAFE TO AI - DUE DECEMBER 31ST

-A feature Top Tier daughter crossed with a descendant of the "Lady" cow family, we love the softness to this female, she is easy keeping, dropping a great udder, and just screams powerhouse
-Her grandams last years calf was sold to KCH Cattle where she has been lighting up a storm in the show ring for them, and this years full sister is destined to sell at Friday Night Lights
-We mated this stout girl to Folsom Prison, so either a red or black calf, it should be very intriguing

Lot **27**



DAM OF LOT 27



SISTER OF LOT 27

MADER JEWEL 122L

21 January 2023 • MDR 122L • PG1480333 • BW 80

Homo Polled

EPDs						
CE	BW	WW	YW	Milk	MC	MWW
12.6	1.6	80.1	110.8	22.6	5.6	62.7

SIRE: WLB TOP TIER 456G
WLB 47Y FAE 343E

MAR MAC UTAH WHISKY 52E

SVS BETTS 808F

DAM: CITYVIEW MISS JEWEL 66J

SUNNY VALLEY PAYTON 77E

EXPOSED TO MADER REBEL YELL 7K ON MARCH 26 - JUNE 10 - DUE FEBRUARY 26TH

-This is the first natural calf out of our well known donor, Jewel 66J, who was purchased through FNL for \$25,000

-Jewel stems back to the great SVS Peyton donor cow, also combining the power of SVS Betts on the top side, cross that power with the calving ease Top Tier sire, you get this compact, red blaze, easy fleshing bred female. Two of her ET sisters were featured last fall at FNL selling to Cobb Cattle and TC Tara Simmentals for \$13k and \$18k

Lot **28**



SIRE OF LOT 28 & 29



SVS BETTS

MADER COVER GIRL 128L

23 January 2023 • MDR 128L • PG1449732 • BW 88

Homo Polled

EPDs						
CE	BW	WW	YW	Milk	MC	MWW
7.8	3.5	71.6	106.1	20.8	4.6	56.6

SIRE: LFE VEGAS 3145A
DMF CAPITAL GAINS 828F
DMF MS TUCKER 112Y

DAM: SVS BETTS 808F
MADER COVER GIRL 2H
MADER COVER GIRL 130Z

EXPOSED TO MADER REBEL YELL 7K ON MARCH 26 - JUNE 10 - DUE FEBRUARY 16TH

- The dam of this female is one of our absolute favorite Betts daughters, and red cows on the farm
- The dam is powerfully constructed from her broad muzzle, capacious mid section, huge foot, and ability to milk, a maternal brother will be a feature red WTL son in this springs bull sale
- This bred heifer is easy to love, feminine made, great hip shape, wide topped, and a great udder setting up

Lot **29**



SERVICE SIRE



LOT 29

MADER CROWN 942K

5 July 2022 • MDR 942K • PG1445138 • BW 84

Homo Polled

EPDs						
CE	BW	WW	YW	Milk	MC	MWW
7.9	3.9	77.5	119.0	24.3	4.2	63.1

SIRE: LFE VEGAS 3145A
DMF CAPITAL GAINS 828F
DMF MS TUCKER 112Y

DAM: CDI AUTHORITY 77X
DHS MS AUTHORITY 18F
KWA MS MOUNTAIN 93D

EXPOSED TO MADER REBEL YELL 7K ON MARCH 26 - JUNE 10 - DUE FEBRUARY 28TH

- A big bodied, broody made long yearling out of the the Capital Gains sire who has left us with some great calf crops
- His dam was purchased from Downhill Simmentals as a bred heifer, and I don't know that we own a deeper ribbed cow on the farm, hence the capacity within this girl
- If power is your game, look no further, this girl will be a weapon down the road in production



MADER SIERRA 176L

Lot **30**

21 February 2023 • MDR 176L • PG1449745 • BW 81

EPDs

CE	BW	WW	YW	Milk	MC	MWW
8.2	2.6	77.0	108.3	24.1	5.9	62.6

Homo Polled Test Pening

STF CRIMSON TIDE DZ87

MADER CHIEF OF STAFF 99F

SIRE: CMS LOGIC 010H

DAM: MADER SIERRA 747H

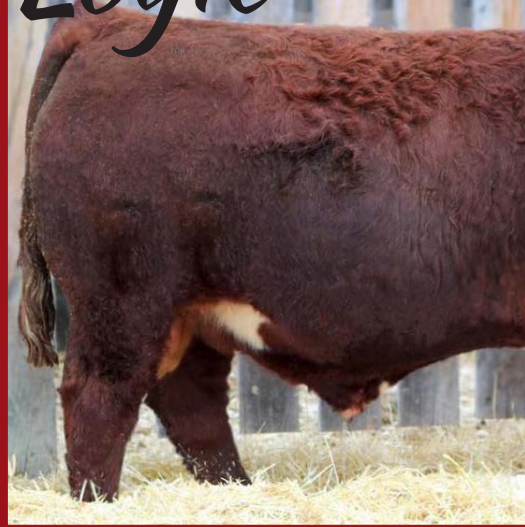
CMS LUBA 808F

MADER SIERRA 39Z

AI BRED TO MADER FOLSOM PRISON 66L ON MARCH 19TH. EXPOSED TO MADER REBEL YELL 7K ON MARCH 26 - JUNE 10
PREG CHECK SAFE TO AI - DUE DECEMBER 31ST

- A very balanced individual who is dark red and has that money stripe
- Just out of a first calf heifer, she was born small and vigorous, and grew into an impressive gal
- Her dam combines WFL Westcott along with one of our best producing red genotypes, the Sierra 524S donor
- Super udder coming down, bred early to Folsom Prison, will you get a red baldy or a black baldy?

Logic



MADER COVER GIRL 158L

Lot **31**

4 February 2023 • MDR 158L • PG1449737 • BW 82

Homo Polled

EPDs

CE	BW	WW	YW	Milk	MC	MWW
9.4	2.2	72.9	102.0	22.2	6.5	58.7

STF CRIMSON TIDE DZ87

SIRE: CMS LOGIC 010H

DAM: MADER COVER GIRL 35J

CMS LUBA 808F

SVS BETTS 808F

MADER COVER GIRL 130Z



AI BRED TO WBC EASE 6L ON APRIL 5TH. EXPOSED TO MADER REBEL YELL 7K ON MARCH 26 - JUNE 10 - PREG CHECK SAFE TO AI - DUE JANUARY 15TH

- Another real honest and impressive Logic daughter crossed onto the power of a Betts female, Logic offers an outcross pedigree with Crimson Tide in his pedigree
- We really like how she is put together, very attractive, has lots of heart girth and flank, and is very sound made
- Bred early to the new and exciting Ease sire, very strong chance you should see a nice red blaze calf



Lot **32**

MADER SIERRA 23L

2 January 2023 • MDR 23L • PG1449690 • BW 81

EPDs						
CE	BW	WW	YW	Milk	MC	MWW
8.9	2.5	76.8	108.5	2.52	5.9	63.6

STF CRIMSON TIDE DZ87

SIRE: CMS LOGIC 010H

CMS LUBA 808F

Homo Polled

MADER WAR SHIP 108F

DAM: MADER SIERRA 153J

MADER SIERRA 142F

AI BRED TO MADER FOLSOM PRISON 66L ON MARCH 20TH. EXPOSED TO MADER REBEL YELL 7K ON MARCH 26 - JUNE 10 PREG CHECK SAFE TO AI - DUE JANAUARY 1ST

-Here is a granddaughter to the Sierra 524S cow that we talk about multiple times, and express how much of an impact she has had through embryo and natural progeny and they have done nothing but make \$ for us

-A female that is very stout made, has lots of spring of rib to her, setting down a real nice udder, and one who we except will produce pounds

-She is bred early to the \$52,000 Folsom Prison bull who was crowned multiple banner wins in the showing, but mostly one that should calve easy and really have some get up and go in his progeny



Lot **33**

MADER LADY 17L

2 January 2023 • MDR 17L • PG1449689 • BW 79

Homo Polled

EPDs						
CE	BW	WW	YW	Milk	MC	MWW
9.8	0.1	68.9	98.4	19.9	7.3	54.4

SIRE: CMS LOGIC 010H

STF CRIMSON TIDE DZ87

CMS LUBA 808F

MADER WALK THIS WAY 224B

DAM: MADER LADY 6J

MADER LADY 38G



DAM OF LOT 33



SERVICE SIRE

EXPOSED TO MADER REBEL YELL 7K ON MARCH 26 - JUNE 10 - DUE FEBRUARY 16TH

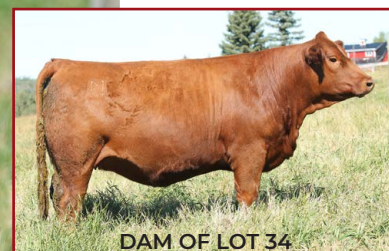
-A calving ease package here coming out of a first calving Walk this Way cow, and CMS Logic who walked with our red heifers

-The dam to this female is a beauty, such great udder quality, a strong foot, very easy doing, and one who has a rip of a calf on her this year

-This heifer is moderate in her stature just like her dam, but once she gets into production, you will discover her ability to milk and bring in a calf in the top ratio of pounds of calf to cow size

-She is blood red in color along with her service sire, so resulting calf should be dark and good

Lot **34**



DAM OF LOT 34



SIRE OF LOT 34

MADER CANDACE 931K

29 June 2022 • MDR 931K • PG1445133 • BW 88

Homo Polled

EPDs						
CE	BW	WW	YW	Milk	MC	MWW
4.5	4.1	78.3	116.9	21.0	1.6	60.2

SIRE: LFE BLOCKBUSTER 3011C
LFE HALL PASS 851G
LFE RS COCOA 658C

DAM: MADER LIEUTENANT 50E
MADER CANDACE 19G
MADER CANDACE 303D

AI BRED TO WBC EASE 6L ON MARCH 20TH. EXPOSED TO MADER REBEL YELL 7K ON MARCH 26 - JUNE 10 - PREG CHECK SAFE TO THE AI - DUE JANUARY 1ST

-We admire this heifer for her cleanliness up front, her massive barrel and rib shape, her clean lines, and her functionality, her dam is a big strong cow who just weaned off a 900lb bull calf
-The \$100,000 Hall Pass progeny were very well accepted in last years sale for their consistency for many characteristics, and they were the high selling average sire group
-She is bred early to Ease, expect big things to come of this matron, if one is going to stand alone on the back page, we always say it better be a good one

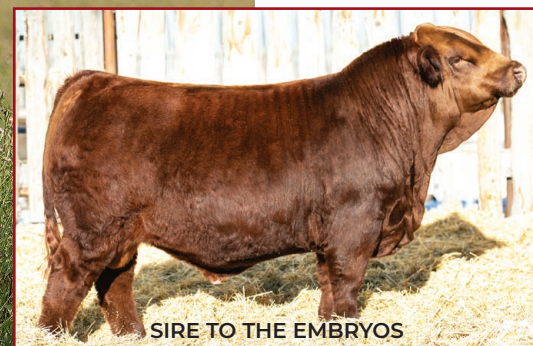
Embryos



Lot **35**



DAUGHTER



SIRE TO THE EMBRYOS

MADER SCANDALOUS 71C

21 January 2015 • MDR 71C • PG1148738 • BW 77

Homo Polled

EPDs						
CE	BW	WW	YW	Milk	MC	MWW
7.2	2.6	68.6	101.0	20.1	5.7	54.4

Resulting
Pedigree

SIRE: MRL P.R. MAN 229H
ULTRA/HVAL TOMMY GUNN 32L
ULTRA MISS COTTONBALL 43C

DAM: MRL GAME CHANGER 12A
MADER SCANDALOUS 71C
MADER UNBROKEN 41Y

- SELLING 3 EMBRYOS

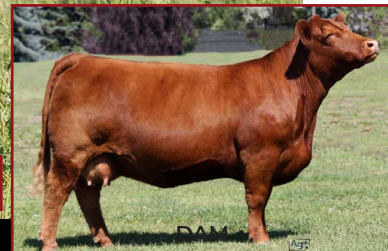
-Dam of the \$52,000 Cherry 56J donor, and also dam of the first Walk The Line daughter to sell in the Family Matters sale for \$21,000 to Lewis Farms
-This cow is all power, milking heavy, has a great big foot design, and raises them right
-Her mating to the \$140,000 Ultra Tommy Gun should be a homerun, and you can expect some dark red baldy calves running around



Lot **36**



DAM



DAM

MADER CHERRY 139M

22 January 2024 • MDR 139M • PG1476818 • BW 85

Homo Polled

EPDs						
CE	BW	WW	YW	Milk	MC	MWW
8.5	3.8	86.2	132.6	23.0	4.5	66.1

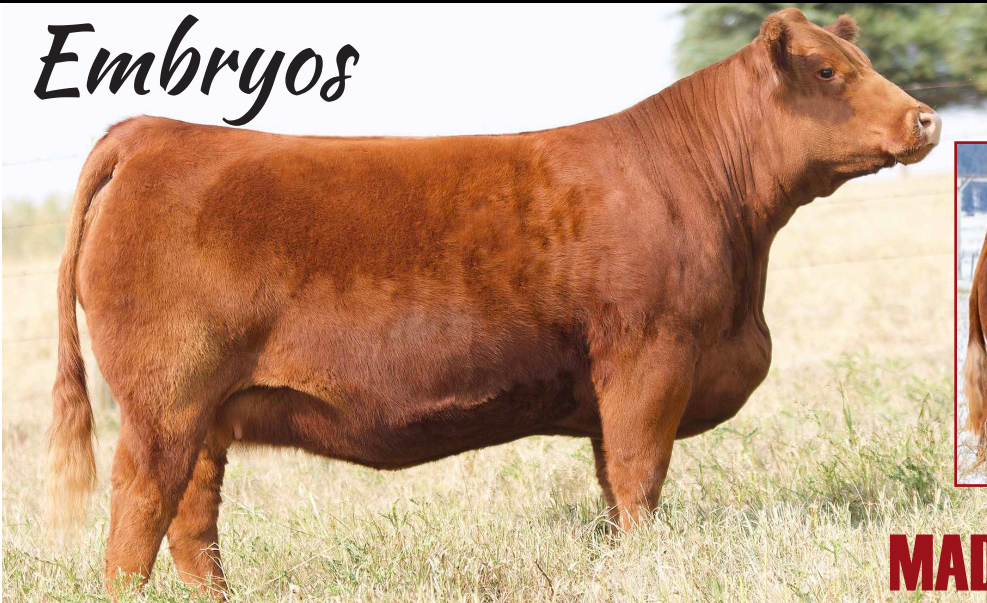
SIRE: KWA LAW MAKER 59C
WRC GREAT GATSBY 3321 ET
WRC CERTAINLY FLIRTIN 18E

DAM: SVS BETTS 808F
MADER CHERRY 56J
MADER SCANDALOUS 71C

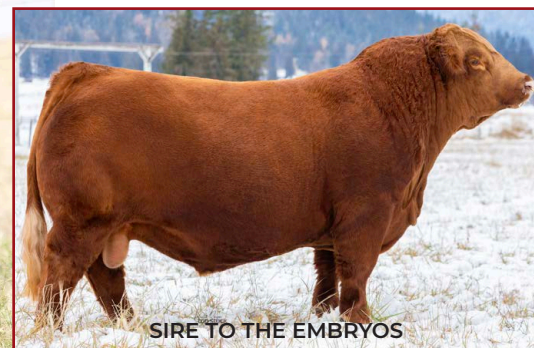
OPEN

-When you have a dam and granddam like this one does, you know she is destined for greatness, a proven pedigree, a superior design, a great haircoat, and that stunning profile
-Her dam is just starting to leave her mark here with over 10 progeny to be hitting the ground this next spring, we anxiously await her impact
-Her sire offers a different twist to the Betts pedigree, combining Lawmaker, Captain Morgan, and the great RF 202Z donor
-Whether looking for a show prospect, or a donor in the making have a look at Cherry 139M

Embryos



Lot **37**



SIRE TO THE EMBRYOS

MADER CHERRY 56J

10 January 2021 • MDR 56J • PG1356613 • BW 81

Homo Polled

EPDs						
CE	BW	WW	YW	Milk	MC	MWW
7.6	3.7	82.2	118.2	21.9	6.6	63.0

Resulting Pedigree

SIRE: MADER WALK THIS WAY 224B
MADER WALK THE LINE 92J
IRCC DARLIN' 613D

DAM: SVS BETTS 808F
MADER CHERRY 56J
MADER SCANDALOUS 71C

SELLING 3 EMBRYOS

-This female was the feature and high selling female for \$52,000 for half interest, to Westman Farms in 2022 Ladies Night
-We wanted to feature a daughter and an embryo opportunity together, to share her greatness, the guess work is done, the cow family is proven, the progeny excel, and the future is bright
-Her mating to Walk The Line has already proven to be a success, as a full sibling to these embryos was heifer calf champion at the competitive Synergy show in Olds



Lot **38**



SIRE OF LOT 38



NATIONAL DAUGHTER

MADER DARLIN' 46M

5 January 2024 • MDR 46M • BPG1476220 • BW 78

Homo Polled, Hetero Black

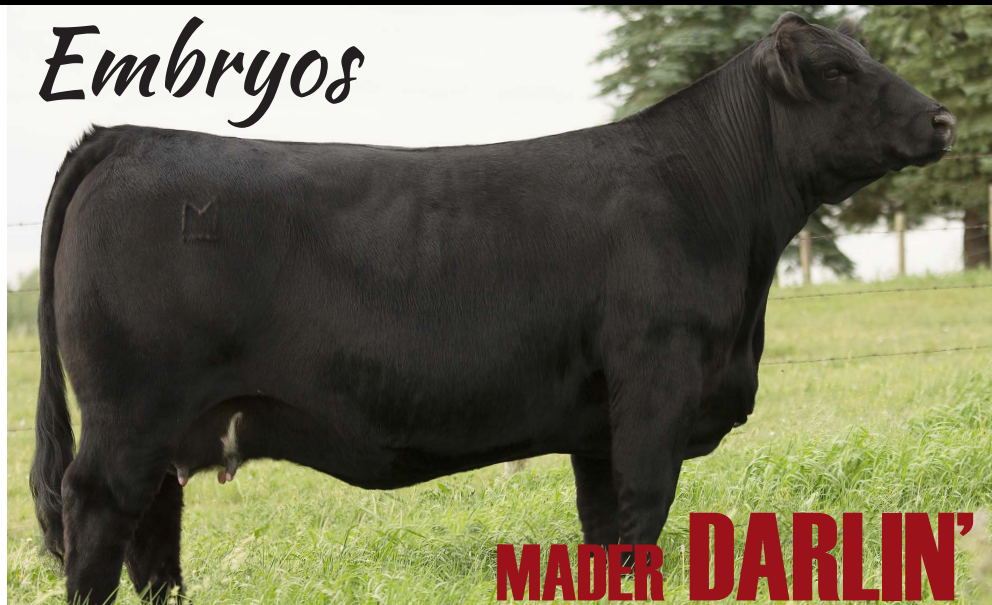
EPDs						
CE	BW	WW	YW	Milk	MC	MWW
12.1	2.0	97.5	152.4	22.7	8.4	71.5

SIRE: LFE THE RIDDLER 323B
MADER THE NATIONAL 43E
LFE BS VIOLET 641A

DAM: MADER WALK THIS WAY 224B
MADER DARLIN' 128K
IRCC DARLIN' 613D

OPEN

A special individual combining some of the breeds best, with National on the top side, the Violet 641A influence, and Walk the Line's full sister on the bottom side you have a stacked pedigree
-This calf is attractive, carries lots of mass, depth and dimension, she was shown successfully this summer at her dams side, Reserve 2 Year Old Pair at the World Simmental show in Olds
-She would make a great jr project as very docile, but mostly we think she will be a great asset to anyone's breeding program



Embryos

MADER DARLIN' 128K

23 January 2022 • MDR 128K • BPTG1398422 • BW 89

Homo Polled, Hetero Black

EPDs						
CE	BW	WW	YW	Milk	MC	MWW
10.5	2.7	102.7	150.5	28.0	7.9	79.4

Resulting Pedigree

SIRE: LFE TURNOUT 3099G
LFE BURNOUT 336L
LFE BS FIRSTBASE 668E

DAM: MADER WALK THIS WAY 224B
MADER DARLIN' 128K
IRCC DARLIN' 613D

SELLING 3 EMBRYOS

-Darlin 128K was featured at the Family Matters sale, where she demanded \$25,000 to LA Land and Cattle
-There is no question what the Darlin cow family has proven over the last few years, and with this cow being a full sister to the \$280,000 Walk the Line, leaves the opportunities pretty endless
-Darlin 128K has that great front end of her dam, a near perfect udder, same great leg and foot underher, and can obviously produce when you analyze her calf selling above
-Her mating to the \$90,000 LFE Burnout bull from this past spring, should get you pretty dam excited

Lot **39**



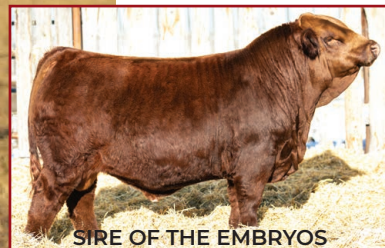
FULL BROTHER TO 128K



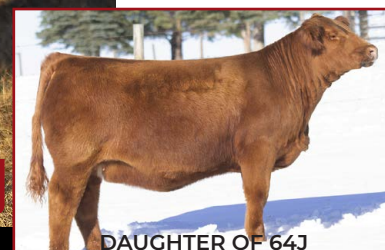
SIRE TO THE EMBRYOS

Embryos

Lot **40**



SIRE OF THE EMBRYOS



DAUGHTER OF 64J

16 January 2021 • WF 64J • PGT1354572 • BW 90

Homo Polled

EPDs						
CE	BW	WW	YW	Milk	MC	MWW
5.6	4.0	84.5	125.4	18.9	-0.8	61.2

Resulting
Pedigree

SIRE: MRL P.R. MAN 229H
ULTRA/HVAL TOMMY GUNN 32L
ULTRA MISS COTTONBALL 43C

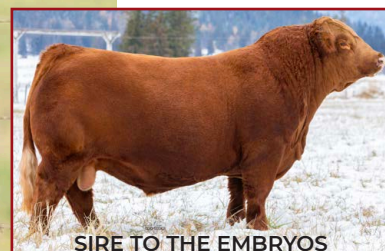
DAM: RF PATRIOT 762E
WF CREAM SODA 64J
RF CREAM SODA 520C

SELLING 3 EMBRYOS

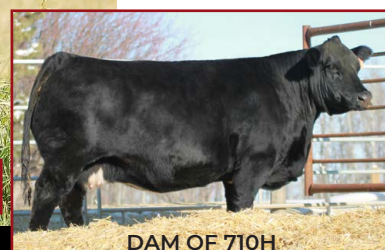
-A \$25,000 donor purchased through FNL a few years back, and an opportunity for us to add a "Red Soda" to the donor lineup
-This female has not disappointed, with her first calf selling to Havencrest through FNL, and 6 full siblings on the ground this year that are Dynamite out of Walk The Line
-We love her body capacity, her udder structure, her femininity, and the power she can produce. Crossed to the \$140,000 Tommy Gun, will result in \$\$ for the successful bidder

Embryos

Lot **41**



SIRE TO THE EMBRYOS



DAM OF 710H

10 June 2020 • MDR 710H • BPTG1432538 • BW 89

Homo Polled, Hetero Black

EPDs						
CE	BW	WW	YW	Milk	MC	MWW
6.7	4.4	88.2	129.2	24.7	4.8	68.8

Resulting
Pedigree

SIRE: MADER WALK THIS WAY 224B
MADER WALK THE LINE 92J
IRCC DARLIN' 613D

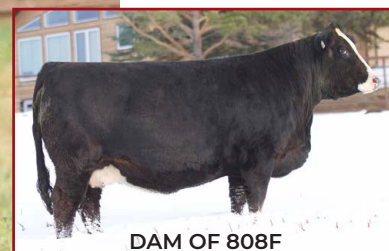
DAM: SVS BETTS 808F
MADER OPAL 710H
CG BLACK OPAL 652S

SELLING 3 EMBRYOS

-Great donors don't come around everyday and when they do, it seems like you can never get enough influence into your herd fast enough
-We have preached about how great the old "Opal 652S" cow has worked for us over the years, and it seemed right that once she was deceased, that we keep the best daughter out of her
-Opal 710H is that selected one, and we knew with the combination of the proven Betts bull, this would be a success
-Her first daughter is a rip and at the top of the replacement pen, and this mating to WTL should be very rewarding, as we anxiously await full sibs hitting the ground as well

Embryos

Lot 42



DAM OF 808F



SIRE TO THE EMBRYOS

6 June 2021 • MDR 808J • BPG1399401 • BW 83

Homo Polled, Homo Black

EPDs						
CE	BW	WW	YW	Milk	MC	MWW
6.5	4.3	84.8	120.4	24.1	4.8	66.5

Resulting
Pedigree

S A V BISMARCK 5682

SVS DYNASTY 915G

SIRE: BROOKING RADVILLE 2208

DAM: MADER LINNE 808F

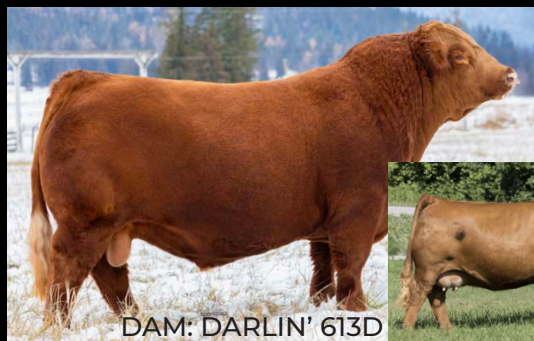
BROOKING BEAUTY 333

FGAF BLACK LINNE 013F

SELLING 3 EMBRYOS

-Linnie 808J has been a standout since a young age, and she has grown into the beautiful cow we always dreamed of. Tidy through that front third, an absolute tank through the middle, an udder to die for, and a foot and structure that is real ideal. The Cobra influenced cows in our herd are the top end, and combined with Dynasty's mass to the equation, you get this masterpiece -In the search for a bull to mate her too, we thought how cool would it be to have some 1/2 blood baldy babies running around. Brooking Radville was the choice, being a maternal brother to well known Brooking Mercury, that will add maternal, presence, and functionality

MORE ELITE MADER SIREs



DAM: DARLIN' 613D



MADER WALK THE LINE 92J

NCB COBRA 47Y

17 January 2021 • PTG1358996

SIRE: MADER WALK THIS WAY 224B

Homo Polled

MADER P IRON SUGAR 7X

MR HOC BROKER

DAM: IRCC DARLIN' 613D

DESTINY ODIN SHEA

EPDs						
CE	BW	WW	YW	Milk	MCE	MWW
11.1	1.5	101.2	145.7	29.9	7.9	80.5
% RK	20	15	1	2	40	10

Sold to KT Ranches & Canadian Sire at Friday Night Lights 2021 for \$280,000. One of the most widely used Red Simmental sires born right here at Mader Ranches.



DAM: MADER SHEILA 151H



MADER THE ROOKIE 204K

NCB COBRA 47Y

26 March 2022 • BPG1403759

SIRE: MADER WALK THIS WAY 224B

Homo Polled

MADER P IRON SUGAR 7X

TJSC BOONE PICKENS 46C

DAM: MADER SHEILA 151H

LFE BS SHEILA 82A

EPDs						
CE	BW	WW	YW	Milk	MCE	MWW
11.1	1.6	87.7	132.6	23.7	7.3	67.6
% RK	20	2015	15	60	15	35

Rookie is a new Herdsire around here that we are very proud of, his dam was show very succesfully alongside of Violet 49H and was a half sister to her as well. Rookie will be our new "Walk This Way"

GREAT BULLS ARE BACKED BY ELITE COWS



DAM: VIOLET 49H

MADER KISS THIS 93K

CCR COWBOY CUT 5048Z

SIRE: WS PROCLAMATION E202

WS MISS SUGAR C4

TJSC BOONE PICKENS 46C

DAM: MADER VIOLET 49H

LFE BS VIOLET 641A

15 January 2022 • BPTG1398400

Homo Polled, Homo Black

EPDs

	CE	BW	WW	YW	Milk	MCE	MWW
	14.0	0.3	87.6	134.1	28.5	9.2	72.3
% RK	4	10	15	10	45	3	25

A service to "Kiss This" should be very lucrative, he sold for \$18,000 this spring in our sale, and is backed by the curve bending Proclamation sire, and the Mader Violet 49H female that sold for \$92,000 for half interest



DAM: VIOLET 49H

MADER FOLSOM PRISON 66L

MADER WALK THIS WAY 224B

SIRE: MADER WALK THE LINE 92J

IRCC DARLIN' 613D

TJSC BOONE PICKENS 46C

DAM: MADER VIOLET 49H

LFE BS VIOLET 641A

8 January 2023 • BPTG1436842

Homo Polled, Hetero Black

EPDs

	CE	BW	WW	YW	Milk	MCE	MWW
	12.7	0.2	83.9	126.9	25.5	8.3	67.5
% RK	10	10	25	20	50	10	35

Born and raised at Mader Ranches and a high seller in 2023 to W Sunrise & Canadian Sires. He was the first calf from the Walk The Line X Violet combination and what a result!



DAM: SHEILA 82A

MADER SON OF ANARCHY 144H

REMINGTON LOCK N LOAD 54U

SIRE: TJSC BOONE PICKENS 46C

TJSC KNOCKOUT 121Y

LFE THE DARK NIGHT 350U

DAM: LFE BS SHEILA 82A

LFE BS SHEILA 136T

6 February 2020 • BPTG1318606

Homo Polled, Homo Black

EPDs

	CE	BW	WW	YW	Milk	MCE	MWW
	8.0	3.7	91.9	140.6	16.9	2.3	62.9
% RK	40	50	4	3	100	75	70

A \$50,000 high seller in our 2020 Bull Sale, going to Harvie Crest and Mader Ranches will walk him in our summer program



DAM: ULTRA CAREY 77H

MADER REBEL YELL 7K

CROSSROAD BLACK REBEL 4F

SIRE: BLACK GOLD REBEL 175H

BLACK GOLD MS SODA 111F

R PLUS RELOAD 2006Z

DAM: ULTRA 30B CAREY 77H

ULTRA MISS CAREY 30B

1 January 2022 • PG1424351

Homo Polled

EPDs

	CE	BW	WW	YW	Milk	MCE	MWW
	9.0	3.4	76.0	114.1	19.8	5.2	57.8
% RK	35	45	55	45	95	35	90

This service sire is cherry red, big hipped, very sound, and is backed by a tremendous Reload daughter that we purchased from Ultra Livestock for \$25,000 at Friday Night Lights 2021.



DAM: RED PARK 851H

WBC EASE 6L

CDI VEGAS 26X

SIRE: KWA SLIDER 196H

CROWE GOLDIE 3F

WHL GOLD KEY 1619D

DAM: BLAIR'S RED PARK 851H

BLAIR'S BAR D PARK 802G

6 January 2023 • PG1434114

Homo Polled

EPDs

	CE	BW	WW	YW	Milk	MCE	MWW
	17.4	-1.7	76.8	115.1	26.5	26.5	9.1
% RK	1	1	55	45	45	4	50

Ease was used on the red heifers this year as an outcross option. We are excited to offer a red baldie service sire with a great genetic background.



Request Return To:
Box 1 Site 12 RR2
Carstairs, AB T0M 0N0



Time Sensitive Material

Ladies
NIGHT

BRED FEMALE SALE