

30th Anniversary

MADER
Ranches

Bull Power
SALE

FRIDAY, FEBRUARY 15TH, 2019
1 PM : AT THE RANCH, CARSTAIRS, AB

WELCOME 30TH ANNIVERSARY EDITION

We want to start by saying “thank you” to all our customers over the past year(s), many of you who are repeat buyers, and some of you who we have just gotten to know! We can't express enough our gratitude for your confidence in our program and product, and we sincerely appreciate doing business with you, but mostly to call you our friends. The cattle business is as tight of an industry as they come, and one of which we all work hard daily, to not only make ends meet on our own or to reach our own goals, but one to which we all work together to better the beef market place in Canada and worldwide! We also need to give a huge thank you to all our friends, family and workers who help make things possible for our family and our ranch. As you all know, it takes a village to help raise children, and it seems to take the same village to help run a livestock operation with unknown schedules and never a lack of projects!

The offering of the bulls runs deep this year. We feel by utilizing embryo transplant, and using select sires on a mass scale, we have brought one of the most consistent set of bulls for your appraisal as ever. Many of the sires used are proven herd bulls or AI sires.... This allows us the advantage versus using all new AI bulls, as we can offer our customers advice on their bull choice(s), based on real life data and experiences from a previous calf crop. The same people you discuss your bull needs with, are the same people that do the calving, feeding, handling, and breeding selections on these bulls. You can trust in confidence, we will be honest and upfront, and can help you sort through them to find a bull(s) that meets your requirements and budget. Our goal is to develop these bulls and grow them out to a maturity level, where they can then go out and breed cows right away, not losing a bunch of extra fat, and maintaining longevity. All bulls will be semen tested and evaluated prior to the sale by Dr. Waylon Wise.

Our cowherd consists of about 300 cows, with the majority of them calving in Jan and Feb, and about 70 that calve on grass in June and July. This allows us to offer yearling bulls and extra age bulls to meet the needs of our clientele. We cull hard on feet and legs, temperament, and udder quality in the herd. We are always trying to source new genetics, so we can constantly offer new bloodlines and improve the herd and the bulls we offer.

We have now raised and sold purebred breeding stock for 45 years, and with that said, we know the importance of good relationships, communication, and what it means to stand behind the product we offer. If you have any problem with something purchased from us, we want to be the first to know about it, and will do our utmost to create a win-win for both parties. Again this year, we have set a pen of bulls aside for spares, and to ensure if any of our customers have an issue, we have you covered.

The sale is at the ranch, 10 miles west of Carstairs. There will be 88 bulls, purebreds, SimAngus, extra age. There will be a good mixture of calving ease bulls for heifers, and performance bulls for cows. Viewing, refreshments, and Valentines's pizza are offered the night before, and stick around after the sale for hospitality and visiting. We would love to have a chance to meet many of you in person and catch up with others we haven't seen in awhile!

THE PEOPLE OF MADER RANCHES



RYLEY & JILL STELLA & HAWKIN MADER

maderranches@gmail.com

Ryley's Cell: 403.807.8140

Jill's Cell: 403.990.9187

Ryley has been a part of the family operation from a young child and was joined by Jill in 2007. Everyone is hands on in the business activities and will look forward to many years in the cattle industry.



RANDY & RONDA MADER

rrmader13@gmail.com

Randy's Cell: 403.660.1123

Randy & Ronda started Mader Ranches in 1975. They have worked hard in the cattle industry for 45 years and see all aspects of the operation from day-to-day, management & mentorship.



TUFFY KIRKWOOD

Tuffy joined the team in 2016. He manages the feed wagon, mechanics, welding and many tasks that make him our jack of all trades. He is a true family member and huge asset to our operation.

WWW.MADERRANCHES.COM

SALE DAY INFORMATION

SCHEDULE

February 14th 5 PM : Refreshments & Pizza
February 15th 12 Noon : Beef Lunch - Kodiak BBQ
1 PM : SALE TIME
Followed by Hospitality

SALE STAFF

Auctioneer: Ryan Dorran 403.507.6483
Ringmen: Mark Stock 403.357.8104
Rod Mcleod 403.540.7986
Taylor Richards 306.821.4169

SALE CONSULTANT

Bohrson Marketing Services Ltd.

Scott Bohrsen 403.370.3010
Darryl Snider 780.385.5561
Taylor Richards 306.821.4169
Matt Criddle 306.539.6934

www.bohrson.com

ACCOMODATIONS

Ramada - Olds 403.507.8349
Best Western Inn - Olds 403.556.5900
Didsbury Country Inn - Didsbury 403.335.8088
Golden West Motor Inn - Carstairs 403.337.3333

INSURANCE

Stockman's Insurance - Cassie Dorran - 403.507.5953
Bulls returning to seller MUST be insured,
Mader Ranches is not liable for injury or mortality if left
at the ranch.

BUYER INCENTIVE

• \$150 taken off bull purchase price if you take them
home sale day.

PHOTOS & VIDEOS

- Taken in house by Mader Ranches
- Can be viewed online at www.maderranches.com
- Bulls pictures taken Dec /18 and videos taken Jan 30/19

INSPECTION

Cattle may be viewed prior to the sale by arrangement
made with Mader Ranches. Come to the bull farm and
view bulls as well as their dams prior to February 13th.
On February 14th the bulls will be penned at the sale
barn and can be viewed there at that time.

TERMS & CONDITIONS

PAGE 59

ON OFFER

62 Red & Black Simmental Yearlings
16 Red & Black Extra Age Simmentals

SUPPLEMENTARY INFO

A supplementary sheet will be available on sale day.
This will include weights, scrotals and any updated
information.

DELIVERY

We offer free delivery to central points in Western
Canada. If you are located past a convenient location
in Canada, we will split delivery costs 50/50. For
US purchases we will split the delivery costs and
buyer is responsible for vet & border costs. We will
start delivering on March 15th at our convenience,
otherwise pick-up will be available at our Ranch.
Free feed until delivery. Delivery is between March 15
- April 15th.

DISCLAIMER

While every effort has been taken to ensure that
all details are correct, the descriptions contained
in this catalogue are often opinion only. We cannot
be responsible for the consequences of any actions
taken or not taken as a result of these opinions.

HOW TO FIND US?

Directions From Carstairs:

Go North on Main Street (10th Ave) out of town, Road
automatically turns west(Twp Rd 303).
Go West 15 kms to Range Road 32.
Turn South. Farm is on your right.

Directions From Hwy 22:

Go East 11 kms on Twp Rd 303 (Carstairs Blind Line) to
Range Road 32.
Turn South. Farm is on your right.

FIND US ON GOOGLE MAPS - Mader Ranches



Offering \$2,500 in SALE CREDITS

Register to bid sale day and be entered to win 1 of 5- \$500 credits

UNABLE TO ATTEND THE SALE?

There is nothing better than being at the sale in person. You get the opportunity to see the cattle, catch up with friends and meet new people! We hope you can join us, but if you can't make it we want to make it convenient for you to participate from where ever you may be!

1. GIVE US A CALL

We are all here to help you. We can talk with you about the cattle that interest you, logistics, and if you like we can even offer an opinion. We have our contact numbers listed on Page 2.

2. PHONE BIDDING

An option that works at all times. You can call any of us or a Bohrson Marketing Agent of your choice. We trust and value this team and encourage you to do the same.



Scott Bohrson 403.370.3010
Taylor Richards 306.821.4169
Matt Criddle 306.539.6934
www.bohrson.com

3. BID AND VIEW ONLINE

You can participate from almost anywhere with an internet connection. Please feel confident in using DLMS for your online viewing and bidding. If you have any questions, please contact our representative at DLMS, Whitney Bosovich at 780-991-3025 or whitney@dlms.ca

Can't make it to the sale? **Watch & Bid Online.**

With DLMS you can Watch, Listen & Bid on your computer just like you were there with online bidding over the internet

Instructions for Viewing And Bidding At the Sale

Visit www.dlms.ca, Fill out the registration form located under registration and sign-up for your free user account to select a username and password.

BIDDERS - To be approved as a bidder, Log in and click BUYER APPROVAL tab, select the sale you are interested in bidding at and click sign up.

**For more information or for help getting approved Call:
Whitney Bosovich 780.991-3025 or Mark Shologan - 780-699-5082**

Direct Livestock Marketing Systems
We're Making the Connection



*To find an agent or sale near you today
visit www.dlms.ca*

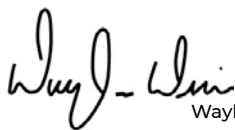
**Purebred Sales • Daily Presort Sales
Direct Off-farm Sales every Thursdays at 10:00 am**

COW\CALF HEALTH & MANAGEMENT

Mader Ranches have their entire cow herd on an integrated and comprehensive health and production management program. This program is based on the detailed collection of data on each individual animal at all key health and production points. This information is kept in a secure web-enabled database called Herdtrax™ and is continually monitored and audited by the managing veterinarians at Cow/Calf Health and Management Services (CCHMS).

CCHMS is proud to work with Mader Ranches and if required will provide documentation and verification of all animal health processes and treatments. If there are any questions with respect to the health and production management program at Mader Ranches, please contact myself.

Sincerely,



Waylon Wise



Office: (403)946-4567
Cell: (403)369-9823
Fax: (403)946-5529
drwwise@gmail.com

HERDTRAX™
Cattle Record Management



Waylon ultrasounding cows on summer pasture at Mader Ranches

BULL PREPARATION

When you focus on building a herd of exceptional females, the resulting bulls not only look the part but they breed it.

Some bulls look fantastic on the day, but it's not good enough to buy a bull on his looks alone. You are buying his potential. Yes, you should trust your eye first, but don't stop there. Study his pedigree, his EPD's, and any related animals. Make sure you look at his performance data, genetic testing and calving ease rating. We provide everything so that you can make an informed choice.

We also do this same homework on the bulls that we select. Talk to any of us! We not only have countless of hours of hands on experience with these animals, but we have spent the time travelling, doing homework and visiting with other cattlemen and women. Our customers know that we have put in the effort to ensure the Mader Ranches bulls will go out and breed calves that make them profitable. Our homework is directly linked to your success.

We as a family are committed to the success of our customers. This means we raise and prepare our animals in a manner that promotes fitness and longevity of your new purchase.

The bulls developed on a TMR ration with Masterfeed pellet, chopped hay and straw, silage & supplements, minerals and vitamins. They are fed in large groups. They have been professionally developed for real-world commercial conditions. All data and complete performance info provided upon request and on sale day. Please remember that EPD's cannot be compared across breeds. We have a Complete Herd Health & Vaccination Program with CCHMS - Waylon Wise (See above) Prior to the sale all bulls have been semen tested, palpated, scrotal measured, and inspected by Dr. Wise.

These bulls are fully guaranteed. Should a bull fail to be a satisfactory breeder, he will be replaced with another bull of equal quality or a credit will be given.

NO REFUNDS. Mader Ranches reserves the right to be the first to know about any problems you might have with your bull.

EPD'S & WHAT THEY MEAN?

We have described in general how EPDs are calculated. All EPD values are comparative. This means that they represent bigger/smaller, less/more types of relationships. We do not know exactly what the resulting progeny will be.

CE–Calving Ease – The ease with which a bull's calves are born to first calf heifers. A first calf heifer is defined as a female calving for the first time at 33 months of age or less. EPDs are reported as deviations in the percent unassisted births. When comparing calving ease EPDs of two sires, the larger EPD indicates a higher percent of unassisted births for calves sired by this bull.

BWT– Birth Weight – Calf weight at birth adjusted to a mature dam equivalent. Expected progeny performance is reported in pounds. The EPD value predicts the difference in average birth weight of a bull's calves, compared to calves of all other bulls evaluated. When comparing the birth weight EPDs of two sires, the larger EPD indicates a heavier average birth weight for calves sired by this bull.

WWT– Weaning Weight – Calf weight taken between 160 and 250 days of age and adjusted to 205 days of age and a mature dam equivalent. Expected progeny performance is reported in pounds. The EPD value predicts the difference in average 205-day weight of an animal's calves compared to calves of all other animals evaluated. When comparing the weaning weight EPDs of two sires, the larger EPD indicates a heavier average weaning weight for calves sired by this bull.

YWT– Yearling Weight – Weight taken between 330 and 440 days of age and adjusted to 365 days of age and a mature dam equivalent. Expected progeny performance is reported in pounds. The EPD value predicts the difference in average 365-day weight of an animal's progeny, compared to the progeny of all other animals evaluated. When comparing the yearling weight EPDs of two sires, the larger EPD indicates a heavier average yearling weight for calves sired by this bull.

MCE– Maternal Calving Ease – The ease with which a sire's daughters calve as first calf heifers. A first calf heifer is defined as a female calving for the first time at 33 months of age or less. Expected progeny differences are reported as deviations in the percent unassisted births. When comparing the maternal calving ease EPDs of two sires, the larger EPD indicates a higher percentage of unassisted births for calves born to this sire's daughters.

MWWT– Maternal Weaning Weight – The weaning weight of an animal's daughters' calves. Expected progeny performance is reported in pounds. The EPD value predicts the difference in average 205-day weight of an animal's daughters' calves compared to calves from daughters of all other animals evaluated. The evaluation reflects both the maternal ability of an animal's daughters and the growth potential of their calves. When comparing maternal weaning weight EPDs of two sires, the larger maternal weaning weight EPD indicates heavier weights due to daughters' ability to produce heavier calves.

MILK– Maternal Milk – The maternal ability of an animal's daughters. Expected progeny performance is reported in pounds of calf weaning weight. The EPD value predicts the difference (due to maternal ability) in average 205-day weight of an animal's daughters calves, compared to calves of daughters of all other evaluated animals. When comparing the maternal milk EPDs of two sires, the larger maternal milk EPD indicates heavier average weaning weights due to the daughters' greater maternal ability.

CW– Carcass Weight – The hot carcass weight of a bull's progeny. Expected progeny performance is reported in pounds and adjusted to a slaughter age of 475 days. The EPD predicts the difference in average carcass weight of a bull's progeny, compared to progeny of all other bulls evaluated. A positive value indicates heavier than average carcass weights, while a negative value (-) indicates lighter than average carcass weights.

REA –Rib Eye Area – The area of the rib muscle of a bull's progeny. Expected progeny performance is reported in inchess and adjusted to a slaughter age of 475 days. The EPD predicts the difference in average rib eye size of a bull's progeny, compared to progeny of all other bulls evaluated. A positive value indicates bigger than average rib-eye size, while a negative value (-) indicates smaller than average rib-eye size.

FAT - Fat Thickness – The external fat thickness of a bull's progeny. Expected progeny performance is reported in inches and is adjusted to a slaughter age of 475 days. The EPD predicts the difference in external fat thickness of a bull's progeny, compared to the progeny of all other bulls evaluated. A positive value indicates thicker than average fat cover compared to the progeny of other bulls evaluated, while a negative (-) value indicates less external fat cover.

MARB EPD– Marbling Score – A subjective evaluation of the amount and distribution of intramuscular fat. Degree of marbling is evaluated in the rib-eye muscle between the 12 th and 13 th rib and is a major factor in determining USDA quality grade. Marbling scores range from 1 (devoid) to 10 (abundant) Expected progeny performance is reported in tenths of a marbling score and adjusted to slaughter age of 475 days. The EPD value predicts the difference in average marbling score of an animal's progeny compared to progeny of all other evaluated bulls. A positive value indicates higher than average marbling scores, while a negative value (-) indicates lower than average scores.

BREED AVERAGE EPDS

Simmental

EPDs						
CE	BW	WW	YW	Milk	MCE	MWW
6.3	3.7	67.5	97.7	7.3	24.4	58.1

Carcass				
CWT	REA	Fat	Marb	
EPD	33.3	0.61	-0.06	-0.06

MADER CALVING EASE RATINGS

3 ratings are used on the bulls to rate them for calving ease, the more stars, the more we recommend them used on heifers



WHAT IS LEPTIN TESTING?

Leptin is a hormone secreted by fat cells that essentially tells the brain when to stop eating. There are more than 20 mutations of the gene in cattle, and all can create subtly different effects. The fully mutated version in the single gene test of the leptin gene (genotype TT) has been associated with better back fat growth, higher milk production, and improved feed efficiency.

Leptin::

:: Leptin TTs have an overall increased rate of fat accumulation compared to leptin CC.

For Leptin TTs, this mainly results in:

- Increased weaning weight
- Increased cow productive life due to increased body condition score
- Increased milk production
- Increased 12th rib backfat
- Impacts yield grade & marbling (quality grade)

PMCH::

PMCH AAs have an overall increased fat deposition compared to PMCH TT.

For PMCH AAs, this mainly results in:

- Increased tenderness
- Increased marbling fat
- Increased 12th rib backfat

IGF2::

IGF2 CCs have an overall increased lean growth compared to IGF2 TTs.

For IGF2 CCs, this mainly results in:

- Increased rib eye area

CRH4::

CRH GGs have an overall increased carcass yield compared to CRH CCs.

For CRH GGs, this mainly results in:

- Increased hot carcass weight
- Increased rib eye area

EXAMPLE:

Carcass EPDs				Leptin Testing	
CWT	REA	Fat	Marb	Leptin	PMCH
33.3	0.61	-.062	-0.06	TT	AA
30	1	100	100		

WHY DO WE LEPTIN TEST?

While the scientific debate over leptin isn't settled, we want to offer our customers another reason to choose Mader Ranches herdsire.

We test our bulls for other traits that Quantum Genetix has identified, such as rib-eye area (IGF2), tenderness (PMCH), stress (CrH4). The leptin program was being introduced to the feedlots through Quantum Genetix as a means of selecting cattle for slaughter based on their DNA and condition score.

Testing and breeding for leptin will be beneficial in the seedstock industry since the positive bulls can then only pass on the leptin mutation to their offspring.

We are also impressed with the research linking leptin to improved milk production. The thought of having a DNA marker that is proven to increase ADG (average daily gain) and milk production in cattle could only be a positive addition to our program.

We are expanding our testing every year, with hopes to continue to purchase bulls with the Leptin test of TT and additional positive testing. Our knowledge grows every year and we hope that if you have any questions regarding the testing or the results, please contact us or Cody at Quantum Genetix.

We have been Homo Polled/Black Testing for over 40 years and find it imperative that our herd sires be Homo Polled so that we can continue to offer that option to our customers. We also Homo Black test for those customers that are only wanting black genetics or those who would like them to throw both colors.

EXTRA AGE BULLS LEPTIN & HOMO POLLED & BLACK TEST RESULTS WILL BE AVAILABLE SALE DAY.

For more info please feel free to contact:

Cody Garrett | Sales Representative
Quantum Genetix | Quantum Biosciences
P 306.956.2071
F 306.956.2066
C 306.951.7977
Cody@quantumgenetix.com
Genomics Simplified

**ALL BULLS TESTED
FOR LEPTIN, PMCH,
IGF2 & CRH4**

**ALL BULLS ARE
HOMO POLLED
& BLACK TESTED**



THE MADER RANCHES DIFFERENCE



POLLED GENETICS

Horns are extra work, welfare and safety issues for cattle and cattlemen. Mader Ranches prides itself on its Polled genetics since 1975



FAMILY OPERATION WITH LONG TIME COMMITMENT

The Mader Family has been in the cattle business for 45 years. This is the 30th Annual Bull Sale and plan on a extensive future with our 2nd and 3rd generation We work hard to ensure our customers are happy with their investment. We are committed to helping our customers achicve their goals and back our animals.



HEART OF OUR HERD

We have a large nucleus of foundation females and pride ourselves in the cow families that extend down from that base. These bulls on offer are the top 88 bulls that we have to offer from 300 calving cows. They are the best of the best.



DEPTH OF PEDIGREE

We utilize Embryo Transfer and AI extensively to mutiply the consistency in our herd. We find that by reproducing mutiple daughters and sons from our donor cows and breed leading sires, we can offer consistency to our customers.



WEIGHTS

These bulls are being fed in order to reach their genetic potential. We really try to encourage fitness and longevity in our bulls. We are feeding our bulls for proper development of their body, feet and legs and reproductive organs. All printed weights are accurate.



ACCURATE DATA

We have invested into cattle record keeping and management so that all of our data is as accurate as possible. We have our herd on the HerdTrax program as it intergrates well with the Total Herd Enrollment with the Canadian Simmental Association. All data is available.

2019 NEW SIRES



Mader Lieutenant 50E
Mader Walk This Way X Combustible



Mader The National 43E
LFE The Riddler X NCB Cobra



MRL Crown Royal 32E
MRL Red Whisky X MRL Integrity

SISTERS TO THE SALE BULLS



SIRE: WFL WESTCOTT
Sold to Rancier Farms
at Friday Night Lights for \$20,000



SIRE: LFE THE RIDDLER
Sold to Ferme Gagnon
at Friday Night Lights for \$20,000



SIRE: MADER/RUST/CS CRUZ
Sold to Lewis Farms
at Agribition for \$13,500



SIRE: LFE THE RIDDLER
Sold to KCH Cattle
at Friday Night Lights for \$6,500



SIRE: WS STEPPING STONE
Sold to Arley Bohrson
at Friday Night Lights for \$9,000



SIRE: LFE THE RIDDLER
Sold to Percyview Farms
at Friday Night Lights for \$6,500



SIRE: BROOKING BANK NOTE
Sold to Labatte Simmentals
at Sim Power for \$7,000



SIRE: MRL GAME CHANGER
Sold to W2 Land & Cattle
at Sim Power for \$7,000



SIRE: LFE COMMISSIONER
Sold to Indian River Cattle Co
at Cobra Event for \$7,500



SIRE: MADER FUGITIVE
Sold to W2 Land & Cattle
at Sim Power for \$7,250



SIRE: KUNTZ SHERIFF
Sold to Triple R Simmentals
at Sim Power for \$6,750



SIRE: MADER WALK THIS WAY
Sold to Double Bar D Farms
at Sim Power for \$6,000

Reference Sire

MRL INTEGRITY 76Y

SIRE: MRL DISCOVERY 21A

TSN MS EDITION 55W

LFE BS LEWIS 322U

DAM: LFE BS JULI 641X

LFE RS JULI 84W



HEAVY HITTER

LFE ^{jm} HEAVY HITTER 352C

6 January 2015 • LFE 352C • BPG1147936

Homo Polled, Hetero Black

	BW	205 Wt.	365 Wt.	ADG	WPDA	EPDs						MCE	MWW
						CE	BW	WW	YW	Milk			
97	777	1443	4.16	-		3.9	3.2	76.3	120.5	16.5		3.2	54.7

Carcass EPDs				Leptin Testing			
CWT	REA	Fat	Marb	Leptin	PMCH	IGF2	CRH4
EPD	30.1	0.74	-0.12	-0.12	-	-	-
Breed Rank	20	65	70	50			

- Purchased in 2016 for \$25,500
- Owned with Severtson Land & Cattle
- The Heavy Hitter calves were our strongest on both the male and female side of things, and in his first calf crop 14 bulls and heifers averaged \$10,500 with having a very consistent 803 lbs weaning weight average with the birthweights averaging 83 lbs
- We love this guy and you can see why!

Lot 1

MRL DISCOVERY 21A

SIRE: LFE HEAVY HITTER 352C

LFE BS JULI 641X

LFE THE DARK NIGHT 350U

DAM: LFE BS SHEILA 82A

LFE BS SHEILA 136T



Dam & Mat Sister for Lot 1-3



Maternal Brother of Lot 1-3

MADER PEARL HARBOUR 149F

8 February 2018 • MDR 149F • BPTG1242628

Homo Polled, Homo Black

	BW	205 Wt.	365 Wt.	ADG	WPDA	EPDs						MCE	MWW
						CE	BW	WW	YW	Milk			
89	897	1417	3.25	3.92		5.7	3.4	76.3	117.3	21.7		3.4	59.9

Carcass EPDs				Leptin Testing			
CWT	REA	Fat	Marb	Leptin	PMCH	IGF2	CRH4
EPD	23.0	0.66	-0.11	-0.18	CC	AT	CT
Breed Rank	70	85	90	80			

CE
☆☆

- A lead off Heavy Hitter son with so much eye appeal, body mass, softness, and functionality
- Stemming from the breed leading Sheila donor female, adds huge maternal strength
- Pearl Harbour is heavy haired, has that extra extension, and is so true on his feet and legs
- A herd bull we plan to utilize in our program to push us to the next level
- 3 full brothers to lead off the catalogue that will be analyzed and rated differently from 1-3 from many respected cattlemen, due to their consistency, quality, and uniformity

RETAINED OWNERSHIP OPTION - CALL US TO DISCUSS

Lot
2

MRL DISCOVERY 21A

SIRE: LFE HEAVY HITTER 352C

LFE BS JULI 641X

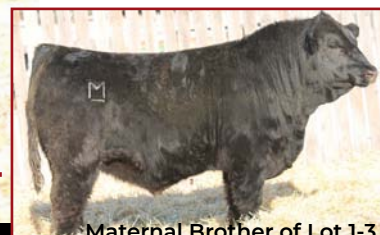
LFE THE DARK NIGHT 350U

DAM: LFE BS SHEILA 82A

LFE BS SHEILA 136T



LFE BS SHEILA 82A



Maternal Brother of Lot 1-3

MADER TOUR OF DUTY 123F

29 January 2018 • MDR 123F • BPTG1242632

Homo Polled, Hetero Black

EPDs											
BW	205 Wt.	365 Wt.	ADG	WPDA	CE	BW	WW	YW	Milk	MCE	MWW
86	849	1374	3.28	3.82	2.9	3.5	79.5	120.9	14.6	1.6	54.4
Carcass EPDs				Leptin Testing				CE			
CWT	REA	Fat	Marb	Leptin	PMCH	IGF2	CRH4	TT	AT	CT	CC
EPD	27.4	0.66	-0.10	-0.21	TT	AT	CT	CC	☆☆		
Breed Rank	40	85	95	90							

-Typing very similar with lot 1, this guy carries that same lower stifle muscle, is deep ribbed, and is extremely balanced throughout
 -Sheila 82A is responsible for raising some of our very best daughters going into the herd, her embryos are very marketable worldwide, and this her second set of sons to highlight our black bull pen
 -Heavy Hitter continues to produce our very best calves with so much width of base, muscle, and guts
 -Tour Of Duty will make many friends come sale day, and will turn into that easy fleshing, easy to love herd bull
 -A feature maternal brother to these bulls sold last year for \$11,000 to Ferme Christel

Lot
3

MRL DISCOVERY 21A

SIRE: LFE HEAVY HITTER 352C

LFE BS JULI 641X

LFE THE DARK NIGHT 350U

DAM: LFE BS SHEILA 82A

LFE BS SHEILA 136T



Maternal Sister of Lot 1-3



Maternal Brother of Lot 1-3

MADER/RUST/CS THE GENERAL 128F

31 January 2018 • MDR 128F • BPG1251367

Homo Polled, Homo Black

EPDs											
BW	205 Wt.	365 Wt.	ADG	WPDA	CE	BW	WW	YW	Milk	MCE	MWW
81	846	1360	3.21	3.76	5.8	2.5	75.6	117.0	19.6	3.4	57.4
Carcass EPDs					Leptin Testing				CE		
	CWT	REA	Fat	Marb	Leptin	PMCH	IGF2	CRH4			
EPD	24.4	0.64	-0.10	-0.20	CC	AT	CT	CC	☆☆		
Breed	60	90	95	85							

-Maybe the deepest ribbed brother of the 3, with that real loose hide and extra jam
 -This was the natural calf of Sheila 82A, which just goes to show how well she can milk and work in the real world outside of being an elite donor female
 -Note the modest birthweights in these brothers, excellent weaning performance, and how they are competing very well in the pen for being the end of January bulls
 -The General daughters will be the type you NEED to keep, and his bulls or steers will exemplify his terrific body mass, length of spine, and style



Lot 4

MRL DISCOVERY 21A
SIRE: LFE HEAVY HITTER 352C
 LFE BS JULI 641X
 WHEATLAND HIGH OCTANE169Y
DAM: MADER SUGAR CANE 48C
 MADER P IRON SUGAR 7X



Dam of Lot 4



Maternal Brother of Lot 4

MADER DELIVERY 109F

24 January 2018 • MDR 109F • BPG1249557

Homo Polled, Homo Black

-Here is a moderate framed meat wagon that has had that herd bull look from a young age
 -He exemplifies so many of the same traits his sire possesses, with extra hair, heel, masculinity and shape
 -Stemming from one of our most dominant cow lines, the Iron Sugars continue to excel in the herd due to perfect udders, feet, skeletons, and correctness
 -This was the bull that stood out to many cattlemen this summer for his extra growth and completeness
 - Check out his 926 lb Adj weaning weight
 - A maternal brother by blood sold to Klautd Ranches last year for \$7750 and another maternal grandson to Denny Golden for \$9000

EPDs											
BW	205 Wt.	365 Wt.	ADG	WPDA	CE	BW	WW	YW	Milk	MCE	MWW
81	926	1411	3.03	3.86	6.3	3.0	79.2	122.8	21.0	3.5	60.6
Carcass EPDs				Leptin Testing				CE			
CWT	REA	Fat	Marb	Leptin	PMCH	IGF2	CRH4	TT	TT	CT	CC
EPD	24.5	0.95	-0.11	-0.12	TT	TT	CT	CC	☆☆		
Breed Rank	60	10	95	50							



Lot 5

MRL DISCOVERY 21A
SIRE: LFE HEAVY HITTER 352C
 LFE BS JULI 641X
 MADER FULL MONEY 145X
DAM: MADER A LIST 214B
 MFR ROCKET GIRL 9122W



Maternal Brother of Lot 5



Mader Full Money 145X

MADER LOCOMOTIVE 34F

12 January 2018 • MDR 34F • BPG1249525

Homo Polled, Hetero Black

-Note the resemblance and relation to lots 4 and 5, the maternal sire to lot 5, is a full brother to lot 4's maternal grandam, the famous Iron Sugar 7X cow
 -Very similar in type and kind to the bull above, this bull has so much lower rib shape, extra muscle definition, and that wide pin spread Heavy Hitter gives to every calf
 -His dam is a very feminine, long fronted, big barreled female, with an outstanding udder
 -An 863 lb Adj weaning weight
 -Maternal brother last year sold to Carl Stacy of Washington

EPDs											
BW	205 Wt.	365 Wt.	ADG	WPDA	CE	BW	WW	YW	Milk	MCE	MWW
94	863	1407	3.40	3.81	3.6	5.1	79.6	120.8	19.1	3.0	58.9
Carcass EPDs				Leptin Testing				CE			
CWT	REA	Fat	Marb	Leptin	PMCH	IGF2	CRH4	CT	AT	CT	CC
EPD	30.5	0.78	-0.13	-0.16	CT	AT	CT	CC	☆☆		
Breed Rank	25	50	50	70							

Lot 6

MRL DISCOVERY 21A
SIRE: LFE HEAVY HITTER 352C
LFE BS JULI 641X
NCB COBRA 47Y
DAM: LFE BS VIOLET 641A
LFE BS VIOLET 128Z



Maternal Brother of Lot 6



Maternal Brother of Lot 6

MADER/RUST/CS INTENT 71F

18 January 2018 • MDR 71F • BPG1251364

Homo Polled, Hetero Black

EPDs											
BW	205 Wt.	365 Wt.	ADG	WPDA	CE	BW	WW	YW	Milk	MCE	MWW
82	834	1312	2.99	3.63	7.5	2.0	72.9	114.5	24.1	5.8	60.6
Carcass EPDs				Leptin Testing				CE			
CWT	REA	Fat	Marb	Leptin	PMCH	IGF2	CRH4	TT	AT	CT	CG
EPD	33.5	0.79	-0.12	-0.14	TT	AT	CT	CG	☆☆		
Breed Rank	15	50	80	60							

-Another pen favourite here for his extra neck extension, width over the top, width of chest floor, and overall eye appeal and style
-Stemming from another top donor female, Violet 641A, who is a known NCB Cobra daughter
-His dam Violet 641A, was shown very successfully being named Champion multiple times, and standing in them within the top 5 and top 10 of all the breeds in the Supremes at both Farmfair and Agribition with her son Cruz at side
-Cruz, sire of lots 34-37, sold two years ago through this sale for \$30,000 to KT Ranches, and last year Violet produced a Riddler son who sold for \$15,500 to Don Kathol, and another full brother, The National, who was retained in the herd

Lot 7

MRL DISCOVERY 21A
SIRE: LFE HEAVY HITTER 352C
LFE BS JULI 641X
SAND RANCH HAND
DAM: J ANCHOR MS RANCHHAND 16W
J ANCHOR DREAMIN LILY 29S



Maternal Sister of Lot 7



Maternal Sister of Lot 7

MADER FORT KNOX 21F

8 January 2018 • MDR 21F • BPG1249521

Homo Polled, Homo Black

EPDs											
BW	205 Wt.	365 Wt.	ADG	WPDA	CE	BW	WW	YW	Milk	MCE	MWW
89	841	1307	2.91	3.64	7.1	2.0	70.5	107.4	21.3	5.4	56.6
Carcass EPDs					Leptin Testing					CE	
	CWT	REA	Fat	Marb	Leptin	PMCH	IGF2	CRH4			
EPD	25.8	0.83	-0.13	-0.13	CC	TT	CT	CC	☆☆		
Breed	50	35	45	55							

-An 841 lb Adj weaning weight, expresses the real-life performance and growth this bull exemplifies
-He carries a great hair coat, is stout throughout, and has so much width and mass over the top
-His Ranch Hand dam has been a real solid producer, with a great udder suspension and teat size, and always brings in a big calf

Lot 8

MRL DISCOVERY 21A

SIRE: LFE HEAVY HITTER 352C

LFE BS JULI 641X

LFE BS LEWIS 322U

DAM: MADER BLACK OPAL 137A

MADER BLACK OPAL 1Y



CG Black Opal 652S



Sister to the dam of Lot 8

MADER THUNDER 35F

12 January 2018 • MDR 35F • BPG1249526

Homo Polled, Hetero Black

EPDs											
BW	205 Wt.	365 Wt.	ADG	WPDA	CE	BW	WW	YW	Milk	MCE	MWW
87	837	1309	2.95	3.62	5.0	3.8	75.8	114.5	19.3	1.3	57.2
Carcass EPDs				Leptin Testing				CE			
CWT	REA	Fat	Marb	Leptin	PMCH	IGF2	CRH4	CT	AT	CC	CC
EPD	28.4	0.76	-0.11	-0.16	CT	AT	CC	CC	☆☆		
Breed Rank	35	60	90	70							

-Thunder is a descendant from one of our older but very productive and most lucrative cows on the ranch, Opal 652S
 -He inherits a lot of guts and softness from his Stubby dam, who is huge middled and a great cow to analyze
 -He was one of those real early maturing calves who showed lots of masculinity, performance, and promise from a young age
 -These Heavy Hitter bulls are just full of meat and potatoes and we can't express how well we feel they will work in the commercial cattle industry

Lot 9

MRL DISCOVERY 21A

SIRE: LFE HEAVY HITTER 352C

LFE BS JULI 641X

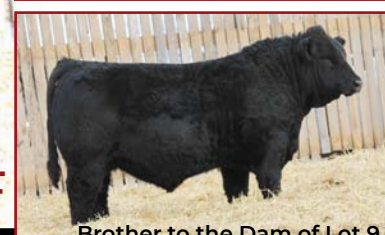
TNT TOP CUT P274

DAM: MADER TOP FLIGHT 125Y

CG BLACK OPAL 652S



Maternal Brother to Lot 9



Brother to the Dam of Lot 9

MADER VOODOO 147F

7 February 2018 • MDR 147F • BPG1249576

Homo Polled, Hetero Black

EPDs											
BW	205 Wt.	365 Wt.	ADG	WPDA	CE	BW	WW	YW	Milk	MCE	MWW
84	894	1355	2.88	3.75	5.4	3.6	81.3	125.4	20.8	4.5	61.5
Carcass EPDs				Leptin Testing				CE			
CWT	REA	Fat	Marb	Leptin	PMCH	IGF2	CRH4	CT	AT	CT	CC
EPD	38.1	0.94	-0.12	-0.18	CT	AT	CT	CC	☆☆		
Breed Rank	5	10	65	80							

-A bull that is so loose hided and soggy in his design
 -You will love the thickness, depth of rib, and muscle expression that he carries
 -Much like the bull above, you will note the great Opal 652S cow in his pedigree who adds tremendous udder and foot quality to all her daughters
 -We have over 15 natural daughters to Opal 652S in the herd currently who are doing a whale of a job, and are now starting to add in granddaughters
 -Many top bulls over the past 3-4 years have either been direct sons of Opal 652S, or out of daughters

Lot 10

MRL DISCOVERY 21A

SIRE: LFE HEAVY HITTER 352C

LFE BS JULI 641X

MADER HEAVY DOSE 29Y

DAM: MADER REUNION 133B

ANGUS/ANGUS



Mader Heavy Dose 29Y



Brother to the Dam of Lot 10

MADER REUNION 88F

21 January 2018 • MDR 88F • BPG1242638 • 3/4 SimAngus

Homo Polled, Hetero Black

EPDs										
BW	205 Wt.	365 Wt.	ADG	WPDA	CE	BW	WW	YW	Milk	MCE
89	812	1369	3.48	3.76	2.3	4.1	71.4	106.6	20.2	-0.1

Carcass EPDs				Leptin Testing				CE
CWT	REA	Fat	Marb	Leptin	PMCH	IGF2	CRH4	
EPD	34.1	0.66	-0.11	-0.10	CC	AT	CT	
Breed Rank	15	85	85	40				☆☆

-A very powerful 3/4 SimAngus bull with a nice white star
 -Full of natural thickness, extra foot size and hair
 -This has been a pasture favorite with his early maturity, structural correctness, and extra mass
 -His young dam is a registered 1/2 blood who milks very hard and has yet to fail us on her quality or size of calf she brings in
 -Utilize the hybrid vigour in the bull on a set of angus cross cows that you would like to see some more punch in their progeny

Lot 11

MRL DISCOVERY 21A

SIRE: LFE HEAVY HITTER 352C

LFE BS JULI 641X

R PLUS HARD ROCK 145X

DAM: MADER ANGEL BABY 146A

MADER BROKEN ANGEL 86Y



Full Brother of Lot 11



Mader Angel Baby 146A

MADER STAR STRUCK 87F

21 January 2018 • MDR 87F • BPG1259097

Homo Polled, Homo Black

EPDs										
BW	205 Wt.	365 Wt.	ADG	WPDA	CE	BW	WW	YW	Milk	MCE
82	754	1245	3.07	3.42	4.4	3.2	72.7	115.0	19.4	2.8

Carcass EPDs				Leptin Testing				CE
CWT	REA	Fat	Marb	Leptin	PMCH	IGF2	CRH4	
EPD	31.5	0.88	-0.12	-0.10	CT	TT	CT	
Breed Rank	20	25	65	40				☆☆

-A maternally stacked bull in the pen, stemming from one of the farm favorite black baldie cows, Angel Baby 146A
 -A full brother sold last year to Starland Colony for \$10,500
 -The dam has a superb udder structure, is feminine and big barrelled, and does a stand-up job year after year
 -Take note of his low birthweight and just about an 800 lb Adj weaning weight

Lot 12

MRL DISCOVERY 21A

SIRE: LFE HEAVY HITTER 352C

LFE BS JULI 641X

MADER P BLK RANSOM 23U

DAM: MADER READY TO RUMBA 127Z

TWIN-CHIEF RUMBA 168R



Maternal Sister of Lot 12



Mader P BLK Ransom 23U

MADER SINISTER 101F

Homo Polled, Hetero Black

23 January 2018 • MDR 101F • BPG1249553

	EPDs				Carcass EPDs				Leptin Testing				CE
	BW	205 Wt.	365 Wt.	ADG	WPDA	CE	BW	WW	YW	Milk	MCE	MWW	
	89	878	1428	3.44	3.97	5.4	3.6	74.4	117.1	20.0	4.2	57.2	
EPD	Carcass EPDs				Leptin Testing								CE
	CWT	REA	Fat	Marb	Leptin	PMCH	IGF2	CRH4	CC	AT	CC	CC	
Breed Rank	40	60	65	45									☆☆☆

-One of the longest made bulls on offer with lots of lower rib shape
 -He stems from a nice black baldie cow, who is a Ransom daughter, all notorious for their good foot quality and milking ability
 -These Heavy Hitter progeny are like peas in a pod, and one of the greatest attributes is how mild mannered and docile they are
 -Look for this guy to add stretch and pounds to his calves

Lot 13

LFE COMMISSIONER 811Z

SIRE: MADER THUNDER CAT 18D

MADER P IRON SUGAR 7X

R PLUS HARD ROCK 145X

DAM: MADER GODDESS 28A

PRAIRIE SKY BLK SUE 34U



Maternal Brother of Lot 13



Mader Thunder Cat 18D

MADER DURANGO 4F

Homo Polled, Hetero Black

1 January 2018 • MDR 4F • BPG1249515

	EPDs				Carcass EPDs				Leptin Testing				CE
	BW	205 Wt.	365 Wt.	ADG	WPDA	CE	BW	WW	YW	Milk	MCE	MWW	
	85	768	1318	3.44	3.62	6.4	3.3	67.4	104.9	23.1	4.1	56.8	
EPD	Carcass EPDs				Leptin Testing								CE
	CWT	REA	Fat	Marb	Leptin	PMCH	IGF2	CRH4	TT	AT	CC	CC	
Breed Rank	55	40	85	55									☆☆☆

-The sire to this bull was a lead off black bull a few years back and sold for \$13,500 to Owen Martin of ON, and we retained in herd semen to use
 -This guy is heavy haired, very athletic on the move, and combines loads of maternal strength with Iron Sugar on his top side and a very milky, good producing dam
 -I feel this bull will calve easy and add extra grow to his calves

Lot 14

LFE GOTHAM 819Y

SIRE: LFE THE RIDDLER 323B

LFE BS CHARO 23Y

MADER DICTATOR 27Z

DAM: MADER BLACKGOLD 80B

MADER P BLACKGOLD 110S



Full Sister of Lot 14 & 15



Maternal Brother of Lot 14 & 15

MADER ELEVATION 46F

14 January 2018 • MDR 46F • BPTG1246748

Homo Polled, Homo Black

EPDs											
BW	205 Wt.	365 Wt.	ADG	WPDA	CE	BW	WW	YW	Milk	MCE	MWW
89	873	1404	3.32	3.88	2.6	4.0	85.4	127.1	23.6	1.6	66.3
Carcass EPDs				Leptin Testing				CE			
CWT	REA	Fat	Marb	Leptin	PMCH	IGF2	CRH4	TT	AT	CC	CC
EPD	34.6	0.99	-0.11	-0.17	TT	AT	CC	CC	☆☆	☆☆	☆☆
Breed Rank	15	5	90	75							

-A real big, stout, easy fleshing bull with a lot of flank and heart girth
 -This guy hit that early maturity, early summer, and hasn't looked back since
 -The Riddler progeny have worked excellent in our program and for many customers, and as you analyze what the full siblings in this flush have done, you will note a sister to these bulls sold for \$35,000 at Friday Night Lights, and two more sisters that sold this year at Friday Night Lights for \$6500 each
 -We plan to retain the other daughters in the herd to maintain the great Blackgold cow family who has worked so well here

Lot 15

LFE GOTHAM 819Y

SIRE: LFE THE RIDDLER 323B

LFE BS CHARO 23Y

MADER DICTATOR 27Z

DAM: MADER BLACKGOLD 80B

MADER P BLACKGOLD 110S



Full Sister of Lot 14 & 15



Full Sister of Lot 14 & 15

MADER TRIBUTE 30F

11 January 2018 • MDR 30F • BPTG1242620

Homo Polled, Homo Black

EPDs											
BW	205 Wt.	365 Wt.	ADG	WPDA	CE	BW	WW	YW	Milk	MCE	MWW
89	822	1347	3.28	3.70	2.7	4.3	87.6	131.1	22.1	1.9	65.9
Carcass EPDs				Leptin Testing				CE			
CWT	REA	Fat	Marb	Leptin	PMCH	IGF2	CRH4	TT	TT	CC	CC
EPD	32.0	0.89	-0.12	-0.11	TT	TT	CC	CC	☆☆	☆☆	☆☆
Breed Rank	20	20	75	45							

-A maternal brother to these full brothers sold last year for \$9500 to Parkland Colony
 -The dam to these bulls has a tremendous udder structure with nice small teats, is very feminine in her design, and milks like a darn
 -Check out the modest birthweights on these Riddler sons, and look at the growth numbers when it comes to EPDs and weaning weights- Nice spread
 -Two brothers that are very mild tempered, carry lots of lower stifle and twist, and will work well in the real world

Reference Sire

HART ALL IN W382

SIRE: SPRINGCREEK ALL IN 155Y

SPRINGCREEK BLK TESS 73T

RCC/TCF LINE DRIVE M181

DAM: SPRINGCREEK LINNE 33R

SPRINGCREEK JOSIE 58N



LINNE 33R



OLYMPIAN

SPRINGCREEK OLYMPIAN 66A

17 January 2013 • MBJ 66A • BPG774968

Homo Polled, Homo Black

EPDs												
BW	205 Wt.	365 Wt.	ADG	WPDA	CE	BW	WW	YW	Milk	MCE	MWW	
108	930	1549	-	-	4.6	5.8	82.7	110.8	19.3	2.1	60.7	
Carcass EPDs					Leptin Testing							
	CWT	REA	Fat	Marb	Leptin	PMCH	IGF2	CRH4				
EPD	24.1	0.75	-0.12	-0.13	-	-	-	-				
Breed Rank	60	65	80	55								

SPRING CREEK OLYMPIAN 66A was the feature and high selling bull from Spring Creek Simmentals and has escalated into a true breeding bull. OLYMPIAN is the power black-baldie bull that the breed has been looking for and combines all the tools to be a future great one. His outcross pedigree is proven and goes back to some of the most proven and strong maternal bloodlines in the business. We were excited to purchase walking rights on this big guy in 2017 and this is his first big group for the bull sale!

Lot 16

SPRINGCREEK ALL IN 155Y

SIRE: SPRINGCREEK OLYMPIAN 66A

SPRINGCREEK LINNE 33R

NCB COBRA 47Y

DAM: MCINTOSH CLEOPATRA 21A

IPU 56U MS RED LINER 242X



Lot 16



Maternal Brother to Lot 16

MADER STAND ALONE 140F

4 February 2018 • MDR 140F • BPG1249572

Homo Polled, Homo Black

										EPDs					
BW	205 Wt.	365 Wt.	ADG	WPDA	CE	BW	WW	YW	Milk	MCE	MWW				
90	908	1422	3.21	3.94	6.5	4.6	83.5	121.3	22.1	4.1	63.9				
Carcass EPDs					Leptin Testing										
	CWT	REA	Fat	Marb	Leptin	PMCH	IGF2	CRH4							
EPD	26.6	0.80	-0.12	-0.13	CT	AT	CC	CC							
Breed	45	45	85	55											
										CE		☆☆			

CE
☆☆

-You will really like the power, length, and stoutness in this black baldie bull
-These Cobra dams are some of our favorite cows nowadays, and this guys dam produced a \$9500 bull last year selling to Klautd Ranches
-The Olympian sons are very consistent in their type and kind, with heavy hair, lots of top, adequate bone, and structurally put together nicely
- Excellent growth with a 908 lb weaning weight, and ranking in the top 5 and 10% of the breed for WW and YW



Lot
17

SPRINGCREEK ALL IN 155Y
SIRE: SPRINGCREEK OLYMPIAN 66A
SPRINGCREEK LINNE 33R
LFE BS LEWIS 322U
DAM: MADER PROMISELAND 19B
CROSSROAD SIERRA 524S



Lot 17



Maternal Sister of Lot 17

MADER FLAGSTONE 94F

22 January 2018 • MDR 94F • BPG1249549

Homo Polled, Homo Black

EPDs											
BW	205 Wt.	365 Wt.	ADG	WPDA	CE	BW	WW	YW	Milk	MCE	MWW
84	854	1326	2.95	3.67	7.1	4.0	74.7	101.9	19.5	2.9	56.9
Carcass EPDs				Leptin Testing				CE			
CWT	REA	Fat	Marb	Leptin	PMCH	IGF2	CRH4	TT	AA	CC	CC
EPD	23.7	0.79	-0.12	-0.11	TT	AA	CC	CC			
Breed Rank	65	50	75	45							

-Flagstone is very complete in his make-up with extra thickness, depth of rib, and softness
-His dam and lot 18's dam are full sisters making these two bulls full brothers by blood
-He brings that attractive baldie face which many of the Olympian progeny have, and stems from a terrific uddered, feminine, moderate framed dam
-He too, boasts a big weaning weight of 854 lbs like many of the Olympians
-Performance, chrome, maternally stacked



Lot
18

SPRINGCREEK ALL IN 155Y
SIRE: SPRINGCREEK OLYMPIAN 66A
SPRINGCREEK LINNE 33R
LFE BS LEWIS 322U
DAM: MADER MARDI GRAS 35A
CROSSROAD SIERRA 524S



Maternal Brother of Lot 18



Crossroad Sierra 524S

MADER RECHARGE 104F

23 January 2018 • MDR 104F • BPG1249555

Polled, Homo Black

EPDs											
BW	205 Wt.	365 Wt.	ADG	WPDA	CE	BW	WW	YW	Milk	MCE	MWW
88	834	1359	3.28	3.78	6.8	4.4	73.6	100.5	19.7	3.0	56.5
Carcass EPDs				Leptin Testing				CE			
CWT	REA	Fat	Marb	Leptin	PMCH	IGF2	CRH4	CT	AA	CC	CC
EPD	23.7	0.79	-0.12	-0.11	CT	AA	CC	CC			
Breed Rank	65	50	75	45							

-Extremely loose hided, soft made, and carries a lot of extra dimension
-This bull inherits his extra rib shape and volume from his very capacious dam
-I can just imagine a pen of steers sired by this bull... chromed up with extra pounds
-It will be splitting hairs between these top end baldie Olympian sons come sale day

Lot 19

SPRINGCREEK ALL IN 155Y

SIRE: SPRINGCREEK OLYMPIAN 66A
SPRINGCREEK LINNE 33R

MADER P BLACK IRONMAN 22U

DAM: MADER P IRON HONEY 31X
LFE FAMOUS 632T



Maternal Sister of Lot 19



Maternal Sister of Lot 19

MADER STRANGER 143F

6 February 2018 • MDR 143F • BPG1249574

Homo Polled, Hetero Black

EPDs												
BW	205 Wt.	365 Wt.	ADG	WPDA	CE	BW	WW	YW	Milk	MCE	MWW	
87	935	1449	3.21	3.96	3.7	5.7	81.5	116.2	20.3	1.5	61.1	
Carcass EPDs				Leptin Testing				CE				
CWT	REA	Fat	Marb	Leptin	PMCH	IGF2	CRH4	CC	AT	CC	CC	
EPD	26.9	0.84	-0.12	-0.21	CC	AT	CC	CC				
Breed Rank	45	35	75	90								

-Check out the 935 lb WW and 1450 lb YW
-This bull is one of the top performance bulls in the whole offering
-He is long bodied, has loads of forerib and muscle definition, while maintaining an attractive head and front end
-His dam is none other than a full sister to our famous Mader Iron Sugar 7X female
-Much like Iron Sugar, her track record reads true with highlights such as a \$15,000 son to Rockport colony, a \$22,000 bred heifer to Lewis Farms, and a \$15,500 heifer calf to Rusylvia Cattle Co

Lot 20

SPRINGCREEK ALL IN 155Y

SIRE: SPRINGCREEK OLYMPIAN 66A
SPRINGCREEK LINNE 33R

MRC WALL STREET 183Z

DAM: MRC MISS UNSPOKEN 114C
TWIN CHIEF UNSPOKEN 112U



Olympian as a yearling



MRC Wall Street 183Z

MADER LIGHTNING 177F

6 February 2018 • MDR 177F • BPG 1265189

Homo Polled, Homo Black

EPDs												
BW	205 Wt.	365 Wt.	ADG	WPDA	CE	BW	WW	YW	Milk	MCE	MWW	
81	866	1321	2.72	3.51	3.6	5.3	82.1	115.0	21.1	1.1	62.2	
Carcass EPDs				Leptin Testing				CE				
CWT	REA	Fat	Marb	Leptin	PMCH	IGF2	CRH4	CT	AA	CC	CC	
EPD	25.3	0.73	-0.123	-0.15	CT	AA	CC	CC				
Breed Rank	55	70	60	65								

-A real attractive package with so much gut and softness
-He has a very attractive and unique blaze, travels very free, and is very smooth through shoulder and small headed
-Utilize this guy to add some color, volume, and great hair



Lot
21

SPRINGCREEK ALL IN 155Y
SIRE: SPRINGCREEK OLYMPIAN 66A
SPRINGCREEK LINNE 33R
WHEATLAND STOUT 930W
DAM: MADER CRAVE 6B
LRX CHEYENNE 14U



Wheatland Stout 930W



LRX Cheyenne 14U

MADER HIGH GROUND 75F

19 January 2018 • MDR 75F • BPG1249541

Homo Polled, Hetero Black

EPDs											
BW	205 Wt.	365 Wt.	ADG	WPDA	CE	BW	WW	YW	Milk	MCE	MWW
80	748	1260	3.20	3.45	7.0	3.3	63.8	90.9	18.8	3.1	50.7
Carcass EPDs					Leptin Testing					CE	
	CWT	REA	Fat	Marb	Leptin	PMCH	IGF2	CRH4			
EPD	23.0	0.74	-0.12	-0.12	CT	AA	CC	CG		☆☆	
Breed Rank	70	65	70	50							

-High Ground is a moderate meat machine
-He is very proportionate in his thickness, muscle pattern, and length of spine compared to his skeletal
-I feel he will really continue to mature into a bull you will love to analyze as he is so easy fleshing
-His dam stems from two breed greats, the Stout progeny always carried extra muscle, and the Cheyenne progeny are proving to have her great udder attachment and milking ability



Lot
22

SPRINGCREEK ALL IN 155Y
SIRE: SPRINGCREEK OLYMPIAN 66A
SPRINGCREEK LINNE 33R
WHEATLAND BULL 680S
DAM: J ANCHOR MS 680S 41Y
J ANCHOR MISS POWERLN 20U



Maternal Brother of Lot 22



Maternal Brother of Lot 22

MADER DEFENDER 126F

31 January 2018 • MDR 126F • BPG1249565

Homo Polled, Homo Black

EPDs												
BW	205 Wt.	365 Wt.	ADG	WPDA	CE	BW	WW	YW	Milk	MCE	MWW	
86	799	1324	3.28	3.67	3.7	5.2	74.7	110.7	19.2	0.8	56.6	
Carcass EPDs					Leptin Testing					CE		
	CWT	REA	Fat	Marb	Leptin	PMCH	IGF2	CRH4				
EPD	28.9	0.98	-0.11	-0.10	TT	AA	CT	CG				
Breed Rank	35	10	90	40								

-A real solid bull with Olympians muscle expression and has lots of width over the top
-His dam continuously raises a top end calf with some strong sons selling through this sale
-We love the low birthweight to high weaning weight spread on these Olympian calves

Lot
23

SPRINGCREEK ALL IN 155Y

SIRE: SPRINGCREEK OLYMPIAN 66A

SPRINGCREEK LINNE 33R

WHEATLAND BULL 468P

DAM: DOWNHILL BLACK LADY 12W

BDM BARBIE DOLL 301T



Maternal Brother of Lot 23




Downhill Black Lady 12W

MADER DENSITY 78F

19 January 2018 • MDR 78F • BPG1249543

Polled, Homo Black

EPDs											
BW	205 Wt.	365 Wt.	ADG	WPDA	CE	BW	WW	YW	Milk	MCE	MWW
92	926	1510	3.65	4.18	5.5	4.6	81.5	117.0	22.5	2.9	63.3
Carcass EPDs					Leptin Testing				CE 		
	CWT	REA	Fat	Marb	Leptin	PMCH	IGF2	CRH4			
EPD	25.0	0.73	-0.12	-0.11	CT	AT	CT	CG			
Breed Rank	55	70	85	45							

-Big performance-oriented bull here
-He boasts a 926 lb Adj WW, is very long spined, and carries a lot of volume and capacity throughout
-His dam, the 12W female, is a never miss cow, including her highlight son in last years sale selling to Campstool Cattle Co. for \$8750
-This guy will add pounds to his calf crop and enhance the maternal strength in his daughters

Lot
24

SPRINGCREEK ALL IN 155Y

SIRE: SPRINGCREEK OLYMPIAN 66A

SPRINGCREEK LINNE 33R

MADER P BLACKENFORCER108S

DAM: MADER P BLACKSTAR 74W

MADER P BLKSTAR 2R



Maternal Brother of Lot 24



Maternal Brother of Lot 24

MADER PUNISHER 135F

2 February 2018 • MDR 135F • BPG1249570

Homo Polled, Homo Black

EPDs											
BW	205 Wt.	365 Wt.	ADG	WPDA	CE	BW	WW	YW	Milk	MCE	MWW
94	939	1441	3.14	3.97	4.4	5.5	77.0	102.8	26.0	3.2	64.5
Carcass EPDs					Leptin Testing					CE	
	CWT	REA	Fat	Marb	Leptin	PMCH	IGF2	CRH4			
EPD	27.1	0.75	-0.12	-0.14	CT	AA	CC	CC			
Breed Rank	45	65	60	60							

-Similar to his brother above, this guy is super long made, and massive in his design
-He too comes from a never miss dam and grandam that are responsible for many top bulls through this very sale
-Two maternal brothers pictured sold for \$9250 to Par 3 Simmentals, and \$8500 to John Kostecky of ND
-These two bulls would really add some stretch and power to a moderate set of cows

Lot 25

SPRINGCREEK ALL IN 155Y

SIRE: SPRINGCREEK OLYMPIAN 66A
SPRINGCREEK LINNE 33R

MADER P BLK RANSOM 23U

DAM: MADER BLACK TIDE 143Z

MISS BLACK GOLD 55S



Paternal Brother Of Lot 25



Paternal Brother Of Lot 25

MADER JUNGLE 118F

Homo Polled, Hetero Black

28 January 2018 • MDR 118F • BPG1249561

BW	205 Wt.	365 Wt.	ADG	WPDA	CE	BW	WW	YW	Milk	MCE	MWW
84	822	1254	2.70	3.52	7.2	3.5	73.5	106.1	21.1	4.5	57.9

EPD	Carcass EPDs				Leptin Testing				CE
	CWT	REA	Fat	Marb	Leptin	PMCH	IGF2	CRH4	
26.1	0.74	-0.12	-0.15	CC	AA	CC	CC	CC	☆☆
Breed Rank	50	65	75	65					

- His picture speaks very true to this bull
- Compact, masculine, big middled, and very balanced
- Dam has nice teat size and udder suspension, and very good feet and legs

Lot 26

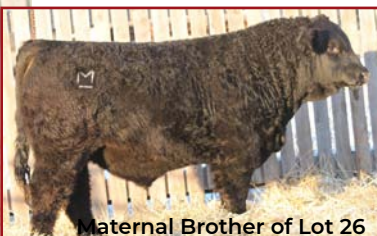
SPRINGCREEK ALL IN 155Y

SIRE: SPRINGCREEK OLYMPIAN 66A
SPRINGCREEK LINNE 33R

MADER P BLK RANSOM 23U

DAM: MADER JOAN JET 111Z

MADER PLD BLACKAT 013P



Maternal Brother of Lot 26



Paternal Sister of Lot 26

MADER STORM 115F

Homo Polled, Homo Black

27 January 2018 • MDR 115F • BPG1249560

BW	205 Wt.	365 Wt.	ADG	WPDA	CE	BW	WW	YW	Milk	MCE	MWW
102	871	1369	3.11	3.83	4.6	5.7	76.8	110.1	20.4	2.6	58.8

EPD	Carcass EPDs				Leptin Testing				CE
	CWT	REA	Fat	Marb	Leptin	PMCH	IGF2	CRH4	
21.9	0.79	-0.12	-0.17	CT	AA	CC	CC	CC	☆☆
Breed Rank	75	50	70	75					

- Another stretchy, muscular, nice lined son of Olympian
- Dam has very nice udder attachment and carries her condition well year round
- Storm has a lot of depth of body, functionality, and that true herdbull look
- Last years son sold to 43 Ranch Ltd



Reference Sire

LFE VIPER 455U
SIRE: NCB COBRA 47Y
 NCB MISS DREAM 22T
 MADER P BLACK IRONMAN 22U
DAM: MADER P IRON SUGAR 7X
 LFE FAMOUS 632T



IRON SUGAR 7X



NCB COBRA

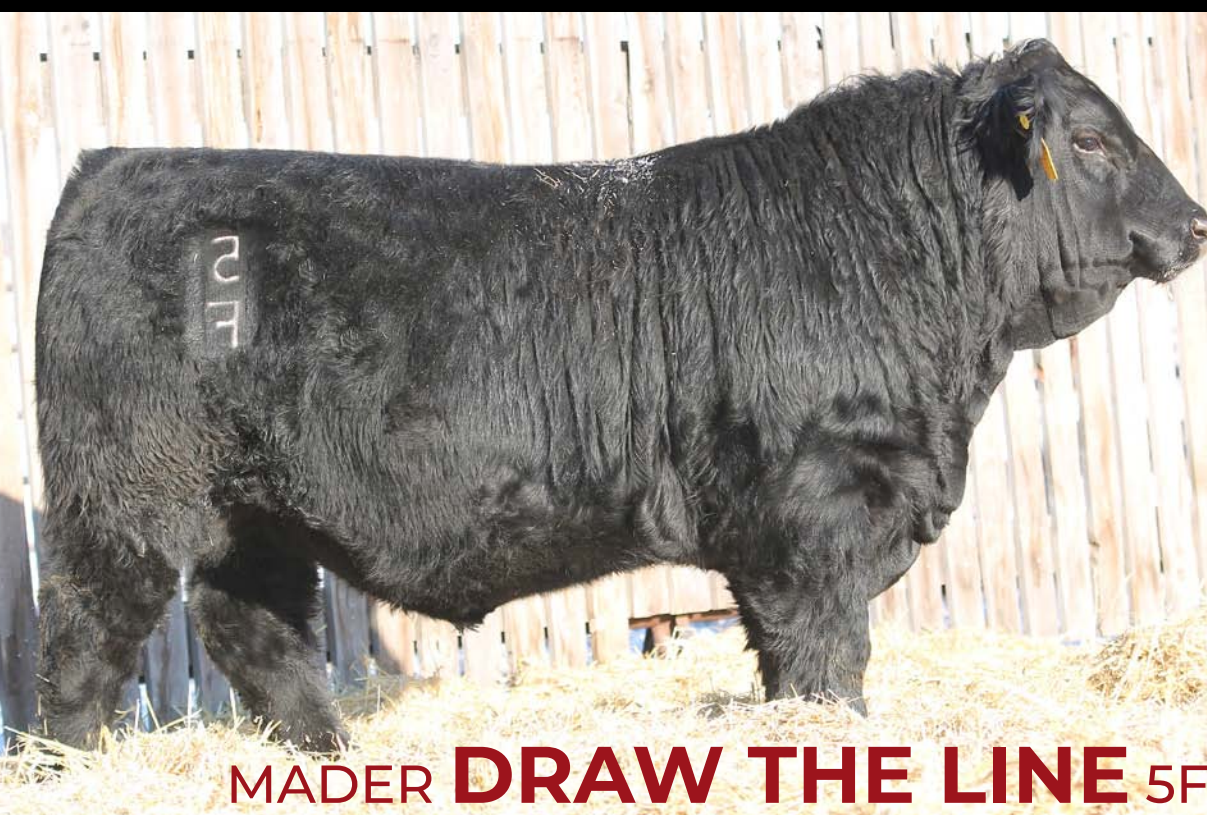
MADER WALK THIS WAY 224B

27 July 2014 • MDR 224B • BPTG1139930

Homo Polled, Hetero Black

	EPDs									
	BW	205 Wt.	365 Wt.	ADG	WPDA	CE	BW	WW	YW	Milk
	84	802	1585	6.50	3.03	8.5	1.6	81.4	124.1	27.1
								6.1	67.8	
	Carcass EPDs				Leptin Testing					
	CWT	REA	Fat	Marb	Leptin	PMCH	IGF2	CRH4	TT	AA
EPD	25.1	0.74	-0.12	-0.28	TT	AT	-	-		
Breed Rank	55	65	75	100						

-This bull was sold to Sunny Valley Simmentals for \$22,000 out of our 2016 sale.
 -We are really proud to have raised him as he comes from one of our best donor females and the famous Cobra bull, who Bohrsen Marketing created a whole sale around his genetics.
 -He has calved excellent, adding hair, stoutness and maternal strengths
 -He has style, substance and is creating beautiful udders as well and meat and muscle



Lot 27

NCB COBRA 47Y
SIRE: MADER WALK THIS WAY 224B
 MADER P IRON SUGAR 7X
 HF KODIAK 5R
DAM: RIVERSTONE BLACKBIRD 6D
 HIGHLAND BLACKBIRD 5X



Riverstone Blackbird 6D



HF Kodiak 5R

MADER DRAW THE LINE 5F

2 January 2018 • MDR 5F • BPRS1250250 • 1/2 SimAngus

Homo Polled, Homo Black

	EPDs									
	BW	205 Wt.	365 Wt.	ADG	WPDA	CE	BW	WW	YW	Milk
	80	847	1437	3.69	3.75	11.2	1.2	73.7	112.9	21.5
								6.4	58.4	
	Carcass EPDs				Leptin Testing					
	CWT	REA	Fat	Marb	Leptin	PMCH	IGF2	CRH4	TT	AA
EPD	27.4	0.43	-0.04	0.10	TT	AA	CC	CC		
Breed Rank	40	100	100	3						

CE
☆☆

-A real feature bull here with loads of stoutness, muscle definition, depth of rib and dimension
 -He is a 1/2 SimAngus bull sired by our \$22,000 high seller a few years back to Sunny Valley Simmentals, and out of a first calving HF Kodiak daughter, who is a brood cow in the making
 -These Kodiak cattle have superb mass and power, and combined with Walk This Ways calving ease, style, and haircoat, you get this special individual
 -Note the Iron Sugar cow on the top side of this pedigree, emphasizing on udder quality and structural correctness

Lot 28

NCB COBRA 47Y

SIRE: MADER WALK THIS WAY 224B
MADER P IRON SUGAR 7X

LFE THE RIDDLER 323B

DAM: MADER LACEY 24D
IPU MS RED LACEY 177S



LFE The Riddler



WalkThis Way Daughter

MADER LIVIN ON THE EDGE 8F

3 January 2018 • MDR 8F • BPG1249518

Polled, Hetero Black

EPDs											
BW	205 Wt.	365 Wt.	ADG	WPDA	CE	BW	WW	YW	Milk	MCE	MWW
79	886	1363	2.99	3.61	7.4	2.6	86.6	129.6	26.2	6.2	69.5
Carcass EPDs				Leptin Testing				CE			
CWT	REA	Fat	Marb	Leptin	PMCH	IGF2	CRH4	TT	AA	CC	CG
EPD	28.7	0.80	-0.12	-0.19	TT	AT	CC	CG	☆☆☆		
Breed Rank	35	45	75	80							

-A special combination when you combine some breed greats such as Cobra, Iron Sugar, and Riddler
-Walk This Way is leaving his mark on the breed, as he just sired the high selling female at Friday Night Lights for \$76,000 for Sunny Valley Simmentals this past fall
-This guy has lots of hair, hip shape, and has that extra extension throughout
-Low birthweight out of a first calf heifer

Lot 29

NCB COBRA 47Y

SIRE: MADER WALK THIS WAY 224B
MADER P IRON SUGAR 7X

MADER SECRET SERVICE 78B

DAM: MADER OPAL 144D
MADER OPAL 124Z



Mader Opal 144D



Mader Secret Service

MADER REVOLVER 48F

14 January 2018 • MDR 48F • BPG1251363

Homo Polled, Homo Black

EPDs											
BW	205 Wt.	365 Wt.	ADG	WPDA	CE	BW	WW	YW	Milk	MCE	MWW
80	839	1364	3.28	3.58	8.9	2.9	78.1	117.0	24.3	6.0	63.4
Carcass EPDs				Leptin Testing				CE			
CWT	REA	Fat	Marb	Leptin	PMCH	IGF2	CRH4	TT	AA	CC	CG
EPD	29.2	0.79	-0.11	-0.15	TT	AA	CC	CG	☆☆☆		
Breed Rank	30	50	90	65							

-Stemming from a first calving daughter who is a descendant of our great Opal 652S female, stacks this bulls pedigree up
-You will notice the influence of Opal 652S throughout this catalogue, and combining her with Iron Sugar donor cow, allows you access to two of our very best cow families
-He is moderate in stature, carries piles of volume, is very correct, and has that small head and smooth shoulder telling us he should calve very easy
-This bulls is a TT for Leptin, AA for PMCH and CC for IGF2 which makes him very close to being a "Super Bull"

Lot
30

NCB COBRA 47Y

SIRE: MADER WALK THIS WAY 224B
MADER P IRON SUGAR 7X

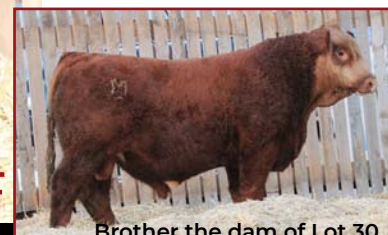
MRL GAME CHANGER 12A

DAM: MADER MERCEDES 204C

IPU MS. MERCEDES 111W



MRL Game Changer 12A



Brother the dam of Lot 30

MADER **BRIGADE** 77F

19 January 2018 • MDR 77F • BPG1249542

Homo Polled, Hetero Black

EPDs											
BW	205 Wt.	365 Wt.	ADG	WPDA	CE	BW	WW	YW	Milk	MCE	MWW
86	820	1332	3.20	3.61	6.8	3.8	77.5	117.0	23.2	6.1	62.0
Carcass EPDs					Leptin Testing				CE		
	CWT	REA	Fat	Marb	Leptin	PMCH	IGF2	CRH4			
EPD	28.3	0.78	-0.12	-0.21	CT	AT	CT	CC			
Breed Rank	35	50	65	90							

-Another Walk This Way son out of a first calf heifer just goes to show how well he calved for us
-Note that all the Walk This Way and Cruz sons are out of first calf heifers, some are "C's" but those are first calving summer heifers
-This bull has been a favorite all summer long with his depth of flank, easy fleshing ability, width over his top, and overall eye appeal and balance
-His dam did a bang up job on him, calving unassisted at 86 lbs, and weaning him off at 820 lbs

Lot
31

NCB COBRA 47Y

SIRE: MADER WALK THIS WAY 224B
MADER P IRON SUGAR 7X

LRX THE GODFATHER 141Z

DAM: MADER LADY SPICE 46D

MADER LADY GOLD 131Y



Mader Lady Gold 131Y



Brother to the dam of Lot 31

MADER **COME TOGETHER** 3F

1 January 2018 • MDR 3F • BPG1249514

Homo Polled, Hetro Black

EPDs												
BW	205 Wt.	365 Wt.	ADG	WPDA	CE	BW	WW	YW	Milk	MCE	MWW	
80	845	1357	3.20	3.56	4.6	3.0	84.3	128.4	20.8	-0.2	63.0	
Carcass EPDs					Leptin Testing					CE		
	CWT	REA	Fat	Marb	Leptin	PMCH	IGF2	CRH4				☆☆☆
EPD	26.5	0.81	-0.122	-0.25	CT	AT	CC	CG				
Breed	45	40	65	95								

-Another stacked pedigree combining Walk This Way's enhanced genotype, with a Godfather crossed Lady Gold 131Y daughter
-For about 3 years running, our top red bulls were Godfather crossed Lady Gold's, going into many progressive herds such as one son to Lawnview Simmentals, one son to Percyview Simmentals and 3 sons into Pleasant Valley Colony averaging \$15,800
-This bull is attractive through his skull and front end, is deep sided, and carries adequate muscle shape



MADER LOCKDOWN 67F

17 January 2018 • MDR 67F • BPG1249538

Homo Polled, Hetero Black

EPDs											
BW	205 Wt.	365 Wt.	ADG	WPDA	CE	BW	WW	YW	Milk	MCE	MWW
86	824	1283	2.87	3.49	6.5	3.8	81.7	122.7	20.6	4.6	61.5
Carcass EPDs				Leptin Testing				CE			
CWT	REA	Fat	Marb	Leptin	PMCH	IGF2	CRH4	TT	AA	CC	CC
EPD	27.0	0.87	-0.12	-0.23	TT	AA	CC	CC	☆☆		
Breed Rank	45	25	65	95							

-Lockdown is very athletic on the move, sound in his design, and really exemplifies what a herd bull should look like
 -We absolutely love the volume his first calving dam expresses, and her udder suspension, teat spread and size is impeccable
 -Not shown on his short pedigree, but Honey Pot 107A is a daughter of Iron Honey 31X, a full sister to Iron Sugar 7X, and also the dam to lot 19
 -This bulls is a TT for Leptin, AA for PMCH and CC for IGF2 which makes him very close to being a "Super Bull"

Lot
32

NCB COBRA 47Y

SIRE: MADER WALK THIS WAY 224B
MADER P IRON SUGAR 7X

MADER PREDATOR 131A

DAM: MADER IRON HONEY 200C
MADER HONEY POT 107A



Mader Honey Pot 107A



Mader Predator 131A



MADER HIDEAWAY 111F

25 January 2018 • MDR 111F • BPG1249558

Homo Polled, Hetero Black

EPDs											
BW	205 Wt.	365 Wt.	ADG	WPDA	CE	BW	WW	YW	Milk	MCE	MWW
83	823	1401	3.61	3.68	8.0	3.1	76.6	116.8	20.3	4.0	58.6
Carcass EPDs				Leptin Testing				CE			
CWT	REA	Fat	Marb	Leptin	PMCH	IGF2	CRH4	TT	TT	CC	CC
EPD	26.0	0.77	-0.12	-0.21	TT	TT	CC	CC	☆☆☆		
Breed Rank	50	55	80	90							

-This bull is ranked very high on our calving ease candidates as his pedigree speaks true to it
 -Walk This Way has successfully been calved easily on heifers for two years now, and Wide Track on his maternal side has proven to have great calving ease tool
 -This bull is so clean shouldered, small headed, and sleek in his design, you can "Hideaway" in the house while his calves are born

Lot
33

NCB COBRA 47Y

SIRE: MADER WALK THIS WAY 224B
MADER P IRON SUGAR 7X

W/C WIDE TRACK 694Y

DAM: DOUBLE BAR D XCITE 709C
SWC SVF XCITE 902X



Double Bar D Xcite 709C



W/C Wide Track



MADER HONOR 24F

10 January 2018 • MDR 24F • BPG1258980

Homo Polled, Homo Black

EPDs												
BW	205 Wt.	365 Wt.	ADG	WPDA	CE	BW	WW	YW	Milk	MCE	MWW	
87	815	1353	3.36	3.54	7.7	3.3	84.3	130.1	25.0	6.5	67.2	
Carcass EPDs					Leptin Testing				CE			
	CWT	REA	Fat	Marb	Leptin	PMCH	IGF2	CRH4				
EPD	38.0	0.80	-0.11	-0.04	CT	AT	CT	CG				☆☆☆
Breed Rank	5	45	90	20								

-A calving ease sire out of a first calving Riddler daughter
 -Every one of these Cruz calves was born unassisted, and up in almost under 10 minutes
 -Cruz was our \$33,000 high selling bull two years back where he created a lot of attention
 -Cruz and his dam Violet 641A, dam of lot 6 and 39-41, were successfully shown as a Champion Simmental pair and contenders in both the Farmfair and Agribition supreme shows
 -Honor's dam is the epitome of what the Riddler daughters are becoming, with a great udder, powerful body type and a great milking ability



Mader/Rust/CS Cruz



Downhill Black Lady 12W



MADER IRON FIST 112F

26 January 2018 • MDR 112F • PG1250254

Homo Polled, Homo Black

EPDs													
BW	205 Wt.	365 Wt.	ADG	WPDA	CE	BW	WW	YW	Milk	MCE	MWW		
79	828	1313	3.03	3.46	8.0	2.5	80.7	124.2	23.9	6.4	64.3		
Carcass EPDs					Leptin Testing					CE			
					Leptin	PMCH	IGF2	CRH4					
EPD	CWT	REA	Fat	Marb	TT	AA	CC	CC					
Breed Rank	4	25	85	35									

-A ¾ brother to the bull above with the same great attributes
 -Small skulled, smooth shouldered, stout topped, with an excellent structural correctness
 -Another favorite young Riddler female who stems from the Honey Pot 31X line, who is a full sister to Iron Sugar 7X
 -Two of his dam's sisters have been sold at Friday Night Lights, one for \$23,000 to Lewis Farms, one for \$15,500 to Rusylvia Cattle Co, and a brother to Rockport Colony for \$15,500
 -This bulls is a TT for Leptin, AA for PMCH and CC for IGF2 which makes him very close to being a "Super Bull"



LFE The Riddler



Mat sister to the dam of Lot 35

Lot
34

LFE BOUNTY 3118Z

SIRE: MADER/CS/RUST CRUZ 3D
 LFE BS VIOLET 641A

LFE THE RIDDLER 323B

DAM: MADER CAT HOUSE 35D
 DOWNHILL BLACK LADY 12W

Lot
35

LFE BOUNTY 3118Z

SIRE: MADER/CS/RUST CRUZ 3D
 LFE BS VIOLET 641A

LFE THE RIDDLER 323B

DAM: MADER IRON HONEY 37D
 MADER P IRON HONEY 31X



Lot
36

LFE BOUNTY 3118Z
SIRE: MADER/CS/RUST CRUZ 3D
LFE BS VIOLET 641A
LFE BS LEWIS 322U
DAM: MADER BLACKGOLD 208C
MADER P BLACKGOLD 110S



MADER **MILLENNIUM** 19F

8 January 2018 • MDR 19F • BPG1249520

Homo Polled, Homo Black

EPDs											
BW	205 Wt.	365 Wt.	ADG	WPDA	CE	BW	WW	YW	Milk	MCE	MWW
81	833	1331	3.11	3.61	8.1	3.1	78.5	116.1	21.0	3.6	60.3
Carcass EPDs					Leptin Testing				CE		
	CWT	REA	Fat	Marb	Leptin	PMCH	IGF2	CRH4			
EPD	34.8	0.76	-0.11	-0.08	TT	AT	CT	CC			
Breed Rank	10	60	90	30							

-Lot 36 and 37 are full brothers by blood, as you will notice their dams are full sibling embryo daughters of the legendary Stubby and Blackgold 110S cow family
-Millennium is long bodied, has extra extension through that front third, and carries a lot of muscle expression
-The combination of Cruz and Stubby set these brothers up to be prime candidates for the heifer pen or to lower birth weight
-Check out his 833 lb Adj weaning weight



Lot
37

LFE BOUNTY 3118Z
SIRE: MADER/CS/RUST CRUZ 3D
LFE BS VIOLET 641A
LFE BS LEWIS 322U
DAM: MADER BLACKGOLD 206C
MADER P BLACKGOLD 110S



MADER **FULL SPEED** 121F

29 January 2018 • MDR 121F • BPG1249563

Homo Polled, Homo Black

EPDs											
BW	205 Wt.	365 Wt.	ADG	WPDA	CE	BW	WW	YW	Milk	MCE	MWW
79	747	1272	3.28	3.43	8.3	2.7	70.5	104.5	20.9	3.7	56.2
Carcass EPDs					Leptin Testing				CE		
EPD	CWT	REA	Fat	Marb	Leptin	PMCH	IGF2	CRH4	☆☆☆		
Breed Rank	34.8	0.76	-0.11	-0.08	TT	AA	CC	CC			
	10	60	90	30							

-Small skulled, smooth through that front third, hairy, and has some rib shape and eye appeal
-This prospect will calve easy and also add some very maternal traits from his genotype such as good udders and feet, correctness, and longevity
-Many of his dams full siblings have been sold through public auction such as a heifer calf to Rust Mountain View Ranch for \$13,000 and a brother to V7 Ranch for \$9500
-This bulls is a TT for Leptin, AA for PMCH and CC for IGF2 which makes him very close to being a "Super Bull"

Lot
38

W/C LOCK DOWN 206Z

SIRE: WS STEPPING STONE B44

WS MS UPGRADE Z15

LFE THE DARK NIGHT 350U

DAM: LFE BS SHEILA 82A

LFE BS SHEILA 136T



LFE BS Sheila 82A



WS Stepping Stone

MADER LONGEVITY 23F

9 January 2018 • MDR 23F • BPTRS1242619 • 7/8 SimAngus

Homo Polled, Homo Black

-Longevity brings a little different twist to our gene pool, being sired by the new and exciting WS Stepping Stone, and crossed with our proven donor female, Sheila 82A
-Stepping Stone seems to calve easy and his daughters in production are proving to milk well
-We recently highlighted a full sister to this bull in Friday Night Lights for \$9000 to Arley Bohrsen
-This 7/8 SimAngus bull starts at an 80 lb birthweight, weans off at 834 lbs, and boasts a yearling weight of 1463 lbs, an impressive spread

	EPDs											
	BW	205 Wt.	365 Wt.	ADG	WPDA	CE	BW	WW	YW	Milk	MCE	MWW
80	834	1463	3.93	4.02	8.2	1.1	71.4	109.1	28.5	3.6	64.2	
Carcass EPDs				Leptin Testing				CE				
	CWT	REA	Fat	Marb	Leptin	PMCH	IGF2	CRH4	TT	AT	CT	CC
EPD	30.1	0.54	-0.07	0.09								
Breed Rank	25	100	100	4								

Lot
39

3D BLK FULL THROTTLE 483X

SIRE: LFE COMMISSIONER 811Z

LFE BS LASS 189X

NCB COBRA 47Y

DAM: LFE BS VIOLET 641A

LFE BS VIOLET 128Z



LFE Commissioner



Maternal Brother of Lot 39-41

MADER DOUBLE DOWN 57F

16 January 2018 • MDR 57F • BPTG1242633

Homo Polled, Homo Black

-Maternally stacked bull here being out of one of our feature donor cows, Violet 641A
-The Cobra females are just building steam in the industry, proving to be great uddered, feminine and capacious, and bringing in the top calves
-This bull was raised on a first calf recipient cow, so he may not quite show the same performance data as his brothers, but we feel he will continue to develop into the true herd sire he is destined to be as time continues

	EPDs											
	BW	205 Wt.	365 Wt.	ADG	WPDA	CE	BW	WW	YW	Milk	MCE	MWW
80	768	1253	3.03	3.45	10.2	2.4	71.0	113.2	23.2	6.5	58.7	
Carcass EPDs				Leptin Testing				CE				
	CWT	REA	Fat	Marb	Leptin	PMCH	IGF2	CRH4	TT	AA	CC	CC
EPD	37.8	0.93	-0.10	-0.21								
Breed Rank	5	15	95	90								



MADER CONSTITUTION 52F

15 January 2018 • MDR 52F • BPTG1242623

Homo Polled, Homo Black

EPDs											
BW	205 Wt.	365 Wt.	ADG	WPDA	CE	BW	WW	YW	Milk	MCE	MWW
81	769	1353	3.65	3.69	11.6	0.6	67.8	99.2	20.6	8.5	54.5
Carcass EPDs						Leptin Testing			CE		
CWT	REA	Fat	Marb	Leptin	PMCH	IGF2	CRH4	CT	AT	CC	CG
EPD	22.2	0.76	-0.12	-0.24	CT	AT	CC	CG	☆☆☆		
Breed Rank	75	50	75	95							

-A striking blaze face son out of the well known AI sire, RF Merchant, and backed by the powerhouse donor Violet 641A
 -Violet passes on her huge rib shape, her big strong foot, and her unique neck extension to all her progeny
 -Note that LFE Violet 641A's first son named "Cruz," was our lead off bull two years ago selling for \$30,000 to KT Ranches
 -Constitution is very mild mannered, very straight in his lines, and very angular in his design
 -Starting at an 81 lb BW, is small skulled and smooth fronted, we feel this bull could be utilized in the heifer pen or to lower birthweights in your cowherd

Lot
40

MR HOC BROKER

SIRE: RF MERCHANT 481B

TLG FLIRTIN WITH YOU

NCB COBRA 47Y

DAM: LFE BS VIOLET 641A

LFE BS VIOLET 128Z



RF Merchant 481B



Maternal Brother of Lot 39-41



MADER SPECIAL DELIVERY 31F

12 January 2018 • MDR 31F • PTG1242621

Homo Polled

EPDs											
BW	205 Wt.	365 Wt.	ADG	WPDA	CE	BW	WW	YW	Milk	MCE	MWW
81	847	1404	3.48	3.85	9.4	1.1	71.1	105.2	22.8	7.1	58.4
Carcass EPDs					Leptin Testing				CE		
	CWT	REA	Fat	Marb	Leptin	PMCH	IGF2	CRH4	☆☆☆		
EPD	31.7	0.80	-0.12	-0.19	CT	AA	CC	GG			
Breed Rank	20	45	80	80							

-A feature red bull out of two black parents, giving him a unique pedigree to the red Simmental gene pool
 -Much like his full brother above, he is small headed, very smooth through that shoulder, and is an extra rib longer than many other bulls
 -We love his dark red color, his docility, his athletic ability, and his pedigree
 -Note the cow power in this bull when you combine TLG Flirtin With You 16S with LFE Violet 641A
 -Calving ease EPD in the top 25% of breed, birthweight in top 15%, low birthweight of 81 lbs and boasts a 847 lb weaning weight

Lot
41

MR HOC BROKER

SIRE: RF MERCHANT 481B

TLG FLIRTIN WITH YOU

NCB COBRA 47Y

DAM: LFE BS VIOLET 641A

LFE BS VIOLET 128Z



LFE BS Violet 641A



Maternal Brother of Lot 39-41



WFL WESTCOTT 24C

27 January 2015 • WFL 24C • PTG1142050

Homo Polled

EPDs											
BW	205 Wt.	365 Wt.	ADG	WPDA	CE	BW	WW	YW	Milk	MCE	MWW
90	1140	-	-	-	2.7	6.3	96.0	142.9	21.3	1.6	69.3

Carcass EPDs				Leptin Testing			
CWT	REA	Fat	Marb	Leptin	PMCH	IGF2	CRH4
EPD	19.6	0.87	-0.12	-0.07	-	-	-
Breed Rank	85	25	80	25			

The \$165,000 phenom that has taken the entire breed by storm as every progressive breeder that used him will compliment his consistency and power he throws into every calf. He is the exceptional breeding sire we all strive to find and he checks off every box to be a great one and leave a positive impact on the breed. WESTCOTT does it all by adding power, hair, dimension and overall completeness in a sound, strong footed package. We were excited to acquire a semen package on this great bull, many of our very best red cows got bred to this legend!

Reference Sire

DCR MR MOON SHINE X102

SIRE: TNT 90 PROOF Z401

TNT MISS S17

R PLUS REDGE 8018U

DAM: WFL SWEET LICIOUS 1044X

WFL RED LICIOUS



WFL SWEET LICIOUS



TNT 90 PROOF



MADER OVERLOAD 105F

24 January 2018 • MDR 105F • BPTG1242639

Homo Polled, Hetero Black

EPDs											
BW	205 Wt.	365 Wt.	ADG	WPDA	CE	BW	WW	YW	Milk	MCE	MWW
100	947	1576	3.93	4.28	8.3	4.8	85.7	128.8	16.0	4.5	58.9

Carcass EPDs				Leptin Testing			
CWT	REA	Fat	Marb	Leptin	PMCH	IGF2	CRH4
EPD	29.8	0.92	-0.12	-0.17	CC	AA	CC
Breed Rank	30	15	70	75			



-Overload is a powerhouse black Westcott son, backed from an extremely proven cow family
 -RF Certainly Flirtin 525C was a \$20,000 purchase at Friday Night Lights a few years back and she entered our donor program immediately
 -She stems from one of the breed's greats, RF Certainly Flirtin 202Z, and at the most recent Friday Night Lights sale, we sold a \$20,000 full sister to this bull to Rancier Farms
 -You have to admire his length of body, his stout top, and how he carries his muscling so true through his lower stifle and twist
 -A sale feature who should turn some heads

Lot 42

TNT 90 PROOF Z401

SIRE: WFL WESTCOTT 24C

WFL SWEET LICIOUS 1044X

SVS CAPTAIN MORGAN 11Z

DAM: RF CERTAINLY FLIRTIN 525C

RF CERTAINLY FLIRTIN 202Z



Full sister to Lot 42



RF Certainly Flirtin 525C



Lot
43

TNT 90 PROOF Z401

SIRE: WFL WESTCOTT 24C

WFL SWEET LICIOUS 1044X

MUIRHEADS KOSMO 157R

DAM: MADER HEATHER 158X

LFE RS DAKOTA COAL 73R



Maternal Sister of Lot 43



Reserve Champion Simmental Pen

MADER UNIVERSAL 65F

17 January 2018 • MDR 65F • PG1249536

Homo Polled

EPDs										
BW	205 Wt.	365 Wt.	ADG	WPDA	CE	BW	WW	YW	Milk	MCE
91	917	1467	3.44	4.09	4.0	4.7	83.4	124.3	23.6	1.7

	Carcass EPDs				Leptin Testing				CE ★
	CWT	REA	Fat	Marb	Leptin	PMCH	IGF2	CRH4	
EPD	22.6	0.72	-0.12	0.05	CC	AA	CC	CG	
Breed Ranks	70	70	70	20					

-Universal was a stand out bull all summer alongside his big volumed, beautiful uddered dam
 -You talk about a bull with some dimension, softness, width and base, this guy sums it up
 -The Westcott sons had a very early growth curve and were fast maturing calves
 -The Heather cow is responsible for many feature progeny including a \$12,000 son a few years back to Big Rock Simmentals, and most recently a \$9000 daughter to Sunny Valley Simmentals
 -He ranks in top 4% of breed for weaning weight and yearling weight EPD's, and you will note his 917 lb weaning weight, and almost 1500 lb yearling weight

RETAINED OWNERSHIP OPTION - CALL US TO DISCUSS



Lot
44

TNT 90 PROOF Z401

SIRE: WFL WESTCOTT 24C

WFL SWEET LICIOUS 1044X

MADER P LADIES MAN 37W

DAM: MADER UNBROKEN 41Y

IPU MS RED RIBEYE 174N



Maternal Brother of Lot 44



Mader Unbroken 41Y

MADER BATTLESHIP 100F

23 January 2018 • MDR 100F • PG1249552

Homo Polled

EPDs										
BW	205 Wt.	365 Wt.	ADG	WPDA	CE	BW	WW	YW	Milk	MCE
94	973	1432	2.87	4.04	2.9	5.4	90.4	139.3	25.3	3.2

	Carcass EPDs				Leptin Testing				CE ★
	CWT	REA	Fat	Marb	Leptin	PMCH	IGF2	CRH4	
EPD	26.1	0.86	-0.13	-0.12	CC	AT	CC	CG	
Breed Rank	50	25	60	50					

-If your looking for that red baldie bull to add performance, stretch, and docility, then Battleship is your bull
 -His dam consistently weans off one of the big guys, with top by a son selling to Sawley Ranches previously
 -The dam is big barreled, great little udder with small teats, great big foot underneath her, and that desired red color
 -The Westcott progeny rank very high in both weaning and yearling when analyzing EPDS, and the truth is in their performance data as you will see this guy at a 973 lb weaning and a 1432 yearling
 -Lots 43-45 were featured as a pen of three bulls we exhibited at Agribition this past fall, declaring Reserve Champion Simmental Pen



MADER UPROAR 73F

18 January 2018 • MDR 73F • PTG1242636

Homo Polled

	BW	205 Wt.	365 Wt.	ADG	WPDA	CE	BW	WW	YW	Milk	MCE	MWW
82	947	1445	3.11	4.04	6.7	3.3	78.9	118.4	23.4	4.5	62.9	

EPDs

-Uproar is as deep sided and flanked as you make them
 -He is nice boned, has a lot of depth through his twist and stifle, and travels well on a good solid dark foot
 -The dam to lots 45-48 has a tremendous track record, being flushed successfully several times to multiple sires, always knocking it out of the park
 -A 947 lb Adj weaning weight, a great cow family behind him, and all the physical attributes we desire in a beef bull

Carcass EPDs

Leptin Testing

CE



EPD	Breed Rank	CWT	REA	Fat	Marb	Leptin	PMCH	IGF2	CRH4
95	85	40	30						



Crossroad Twinkle 594T



Maternal Brother to Lot 45-48

Lot 46

TNT 90 PROOF Z401

SIRE: WFL WESTCOTT 24C

WFL SWEET LICIOUS 1044X

WHEATLAND'S INFERNO 325N

DAM: CROSSROAD TWINKLE 594T

CROSSROAD ROSEMARY 394R



MADER HEAD HUNTER 113F

27 January 2018 • MDR 113F • PTG1242625

Homo Polled

	BW	205 Wt.	365 Wt.	ADG	WPDA	CE	BW	WW	YW	Milk	MCE	MWW
82	807	1397	3.69	3.85	9.1	3.2	77.5	116.8	25.9	6.0	64.7	

EPDs

-Long spined, well mannered, and lots to offer over his top
 -Note the moderate birthweights on these 4 full brothers and then check out how well they weaned off
 -A maternal brother to these guys is pictured beside lot 46, and was a feature Godfather son selling a few years back to Nickel Farms for \$12,000

Carcass EPDs

Leptin Testing

CE



EPD	Breed Rank	CWT	REA	Fat	Marb	Leptin	PMCH	IGF2	CRH4
80	65	50	25						



Maternal Brother to Lot 45-48



Maternal Sister to Lot 45-48



Lot
47

ITNT 90 PROOF Z401

SIRE: WFL WESTCOTT 24C

WFL SWEET LICIOUS 1044X

WHEATLAND'S INFERNO 325N

DAM: CROSSROAD TWINKLE 594T

CROSSROAD ROSEMARY 394R



Maternal Brother to Lot 45-48



Maternal Sister to Lot 45-48

MADER **WAR SHIP** 108F

24 January 2018 • MDR 108F • PTC1242626

Homo Polled

EPDs											
BW	205 Wt.	365 Wt.	ADG	WPDA	CE	BW	WW	YW	Milk	MCE	MWW
83	829	1301	2.95	3.62	9.1	3.2	77.5	116.8	25.9	6.0	64.7
Carcass EPDs				Leptin Testing				CE			
CWT	REA	Fat	Marb	Leptin	PMCH	IGF2	CRH4	CC	AA	CC	GG
EPD	20.9	0.74	-0.13	-0.06	CC	AA	CC	GG	☆☆	☆☆	☆☆
Breed Rank	80	65	50	25							

-In my mind, maybe the stoutest topped brother with the most rib capacity
 -Loads of hair, style, and is very athletic on his feet and legs
 -Note that lot 47 and 48 were raised on first calving recipients compared to their brothers lot 45 and 46 who were raised on mature cows
 -Warship will mature into a bull you will love to show your friends, as I expect he will maintain his easy fleshing ability and rather large muscle definition



Lot
48

TNT 90 PROOF Z401

SIRE: WFL WESTCOTT 24C

WFL SWEET LICIOUS 1044X

WHEATLAND'S INFERNO 325N

DAM: CROSSROAD TWINKLE 594T

CROSSROAD ROSEMARY 394R



Maternal Brother to Lot 45-48



Maternal Sister to Lot 45-48

MADER **SINNER** 154F

11 February 2018 • MDR 154F • PTC1242630

Homo Polled

EPDs											
BW	205 Wt.	365 Wt.	ADG	WPDA	CE	BW	WW	YW	Milk	MCE	MWW
80	812	1308	3.10	3.60	9.1	3.2	77.5	116.8	25.9	6.0	64.7
Carcass EPDs				Leptin Testing				CE			
CWT	REA	Fat	Marb	Leptin	PMCH	IGF2	CRH4	CC	AA	CC	GG
EPD	20.9	0.74	-0.13	-0.06	CC	AA	CC	GG	☆☆	☆☆	☆☆
Breed Rank	80	65	50	25							

-The youngest of the brothers being a mid February bull, but he upholds their reputation of having a lot of balance, a lot of guts, and a lot of presence
 -Analyze the maternal progeny pictured on this page, and you will see the value behind the cow family these bulls come from
 -At 11 years of age this year, she still rocks a perfect udder suspension, has more barrel than most cows on the ranch, and still weans off a big calf



MADER DIVIDEND 45F

14 January 2018 • MDR 45F • PG1249529

Homo Polled

EPDs											
BW	205 Wt.	365 Wt.	ADG	WPDA	CE	BW	WW	YW	Milk	MCE	MWW
79	838	1382	3.40	3.83	8.6	2.5	77.8	113.0	20.8	4.6	59.7
Carcass EPDs					Leptin Testing				CE		
	CWT	REA	Fat	Marb	Leptin	PMCH	IGF2	CRH4			
EPD	20.6	0.73	-0.13	-0.11	CT	AA	CC	GG			
Breed Rank	80	70	50	45							

-Dividend is super long in his make-up, and demonstrates a lot of masculinity, thickness, and width of base
 -The Lexy 8Y cow is put together as well as you can make them, with her great udder attachment, her easy fleshing ability, and her near perfect feet
 -We just calved out her first retained daughter who is flawless in udder and body type, and had a feature bred that sold for \$8000 to Westhill Ranches in SimPower Sale
 -This big boy will really add some pounds to his offspring

Lot
49

TNT 90 PROOF Z401

SIRE: WFL WESTCOTT 24C

WFL SWEET LICIOUS 1044X

ACS RED KNIGHT 715T

DAM: SUN STAR LEXY 8Y

SUN STAR LEXY 19W



Maternal Sister of Lot 49



Maternal Sister of Lot 49



MADER HITMAN 53F

15 January 2018 • MDR 53F • PG1249533

Homo Polled

EPDs											
BW	205 Wt.	365 Wt.	ADG	WPDA	CE	BW	WW	YW	Milk	MCE	MWW
85	790	1340	3.44	3.69	8.2	2.7	67.8	101.7	26.7	3.9	60.6
Carcass EPDs					Leptin Testing				CE		
EPD	CWT	REA	Fat	Marb	Leptin	PMCH	IGF2	CRH4	CT	AA	CC
Breed Rank	23.6	0.80	-0.12	-0.06							
	65	45	70	25							

-Dark red in color, very straight in his lines, and very well dispositioned
 -The Natalie 113T cow passes down her great udder type and femininity to her daughters, and her great foot quality, and attractiveness to her sons
 -Most recently two daughters have sold through the SimPower sale to KT Ranches and Chestermere Farms

Lot
50

TNT 90 PROOF Z401

SIRE: WFL WESTCOTT 24C

WFL SWEET LICIOUS 1044X

MUIRHEADS KOSMO 157R

DAM: MADER P NATALIE 113T

CROSSROAD NATORI 17N



Maternal Sister of Lot 50



Maternal Sister of Lot 50



Lot
51

TNT 90 PROOF Z401

SIRE: WFL WESTCOTT 24C

WFL SWEET LICIOUS 1044X

MADER P BLK RANSOM 23U

DAM: MADER COVER GIRL 130Z

JHSN BLK COVER 426U



Maternal Brother of Lot 51



Maternal Sister of Lot 51

MADER LINE OF FIRE 124F

30 January 2018 • MDR 124F • PG1249564

Homo Polled

EPDs											
BW	205 Wt.	365 Wt.	ADG	WPDA	CE	BW	WW	YW	Milk	MCE	MWW
81	831	1441	3.81	3.98	7.0	3.1	73.6	109.3	22.5	4.7	59.3
Carcass EPDs				Leptin Testing				CE			
CWT	REA	Fat	Marb	Leptin	PMCH	IGF2	CRH4	CC	AA	CC	CG
EPD	20.3	0.76	-0.12	-0.06	CC	AA	CC	CG	☆☆		
Breed Rank	85	60	85	25							

-A favourite in the pen and of the Westcott's as he resembles a lot of the great characteristics his \$160,000 sire exemplifies
 -He is round in his muscle shape, very loose made through the middle third, has a big foot, and a real attractive skull
 -His dam stems back to Ransom, who has left us with some very productive daughters who all have very functional feet and udders
 -A feature Godfather son of the dam sold a few years back to Y2 Cattle Company with another son selling to Lucasia Ranch last year



Lot
52

TNT 90 PROOF Z401

SIRE: WFL WESTCOTT 24C

WFL SWEET LICIOUS 1044X

WLB RED 462P 375T

DAM: CMS CABARET 167Y

KTF PINK RIBBON 11T



Maternal Brother of Lot 52



Maternal Sister of Lot 52

MADER PENDULUM 37F

13 January 2018 • MDR 37F • PG1249527

Homo Polled

EPDs											
BW	205 Wt.	365 Wt.	ADG	WPDA	CE	BW	WW	YW	Milk	MCE	MWW
81	809	1334	3.28	3.70	7.1	3.9	73.0	108.8	22.2	5.0	58.7
Carcass EPDs					Leptin Testing					CE	
	CWT	REA	Fat	Marb	Leptin	PMCH	IGF2	CRH4			
EPD	21.9	0.78	-0.12	-0.05	CC	AT	CC	GG			
Breed	75	50	70	20							

-The Cabaret 167Y cow continues to raise us the good ones with sons working for the Fletcher family of Airdrie and the Fretz family of Torrington, and a superb daughter working in the herd
 -Pendulum is beef bull, with so much chest floor, width and base throughout, and muscle expression
 -This guy has a bit of stage fright, and tends to stay to the back of the group, but with his superior quality and tendency to want to stay away from you, we figured he would work in the right operation, and produce some darn good offspring

Lot
53

DCR MR MOON SHINE X102

SIRE: TNT 90 PROOF Z401

TNT MISS S17

MRL GAME CHANGER 12A

DAM: MADER JULIET 210C

MADER BITTERSWEET 50A



Mader Bittersweet 50A



TNT 90 Proof Z401



MADER CONQUEST 66F

17 January 2018 • MDR 66F • PG1249537

Polled

	EPDs									
	BW	205 Wt.	365 Wt.	ADG	WPDA	CE	BW	WW	YW	Milk
	78	918	1462	3.40	3.98	9.1	2.8	83.0	125.7	25.8
								5.6	67.3	
	Carcass EPDs				Leptin Testing				CE	
	CWT	REA	Fat	Marb	Leptin	PMCH	IGF2	CRH4	CT	CG
EPD	38.7	1.08	-0.12	-0.09	CT	AA	CT	CG	☆☆☆	
Breed Rank	4	1	85	35						

-A true performance bull who brings a lot to the table
 -He was born unassisted out of first calving heifer at 78 lbs, and she milked like a darn weaning him off at a 918 lb Adj weaning weight
 -Small skulled and very smooth fronted, line this herd bull up to be a great calving ease sire
 -He inherits the depth of body and rib shape from his dam, and also tracks very true on his feet and legs
 -TNT 90 Proof is the sire to the \$160,000 WFL Westcott bull

Lot
54

DCR MR MOON SHINE X102

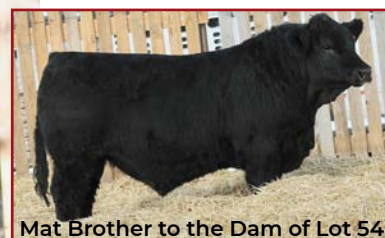
SIRE: TNT 90 PROOF Z401

TNT MISS S17

MAF R HORIZON 7Y

DAM: MADER STOP N STARE 11D

MISS G701 HR/RR U14



Mat Brother to the Dam of Lot 54



MAF R Horizon 7Y



MADER DELIVERY 106F

24 January 2018 • MDR 106F • PG1249556

Homo Polled

	EPDs									
	BW	205 Wt.	365 Wt.	ADG	WPDA	CE	BW	WW	YW	Milk
	84	896	1421	3.28	3.76	8.5	4.0	85.9	124.1	20.7
								5.9	63.7	
	Carcass EPDs				Leptin Testing				CE	
	CWT	REA	Fat	Marb	Leptin	PMCH	IGF2	CRH4	CT	CC
EPD	36.9	1.04	-0.12	-0.12	CT	AA	CC	CC	☆☆☆	
Breed Rank	10	2	75	50						

-You take 90 Proofs calving ease ability and attractiveness, and combine it with MAF Horizons power and mass, and you get a real tidy package in this individual
 -He has expressed a great muscle pattern from a young age, has a great haircoat, and will calve well adding lots of maternal and punch to his calves
 -His first calving dam was one of our absolute favorite heifer calves the year she was weaned and continues to mature into a great brood cow like her mother

Reference Sire

SPRINGCREEK LOTTO 52Y
SIRE: IPU 403P RED LOTTO 198A
NUG PASHMENIA 403P
R PLUS REDGE 8018U
DAM: WFL SWEET LICIOUS 1044X
WFL RED LICIOUS



WFL SWEET LICIOUS



IPU 198A



WFL BLINDLINE 28D

31 January 2016 • MDR 28D • PG1169025

Homo Polled

EPDs									
BW	205 Wt.	365 Wt.	ADG	WPDA	CE	BW	WW	YW	Milk
95	843	1405	-	-	6.1	4.5	73.2	105.0	26.3
								6.0	62.9
Carcass EPDs									
CWT	REA	Fat	Marb	Leptin	PMCH	IGF2	CRH4		
EPD	23.4	0.77	-0.14	-0.39	-	-	-	-	-
Breed Rank	65	55	35	100					

-Acquired this sire from the Westway Farms operation in 2017 and we are really pleased at how he has turned out!
-Out of the same dam as the \$165,000 WFL Westcott bull, so you can see the power and the consistency in those genetics
- Blindline brought an extra frame score back into some of our smaller cows but still maintained the movement and structure that is important to us and our customers



MADER SLINGBACK 68F

17 January 2018 • MDR 68F • PG1249539

Polled

EPDs									
BW	205 Wt.	365 Wt.	ADG	WPDA	CE	BW	WW	YW	Milk
87	839	1311	2.95	3.57	5.9	4.2	72.4	104.4	22.7
								4.7	58.9
Carcass EPDs									
CWT	REA	Fat	Marb	Leptin	PMCH	IGF2	CRH4		
EPD	20.6	0.68	-0.12	-0.19	CT	AA	CC	CG	
Breed Rank	80	85	65	80					

CE
☆☆

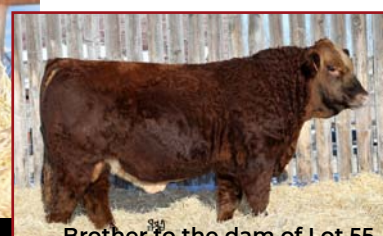
-Here is the lead off son of our junior herd sire, WFL Blindline
-Note that Blindline stems from the same great Sweet Licious 1044X cow, that the \$160,000 WFL Westcott came from the year before
-I love the natural shape this bull has, as he is wide over those hooks, round in his muscle, and carries a lot of easy doing ability
-He comes from an honest, hard working young cow, that I expect will continue to out produce herself year after year

Lot 55

IPU 403P RED LOTTO 198A
SIRE: WFL BLINDLINE 28D
WFL SWEET LICIOUS 1044X
MADER DICTATOR 27Z
DAM: MADER COVER GIRL 234B
JHSN BLK COVER 426U



Mader Dictator 27Z



Brother to the dam of Lot 55



Lot
56

IPU 403P RED LOTTO 198A
SIRE: WFL BLINDLINE 28D
WFL SWEET LICIOUS 1044X
LRX THE GODFATHER 141Z
DAM: MADER LADY CRUSH 20C
MADER LADY GOLD 131Y



Mader Lady Gold 131Y



Brother to the dam of Lot 56

MADER CRAFTSMAN 64F

17 January 2018 • MDR 64F • BPG1249535

Homo Polled

EPDs											
BW	205 Wt.	365 Wt.	ADG	WPDA	CE	BW	WW	YW	Milk	MCE	MWW
85	850	1407	3.48	3.81	4.8	4.1	76.9	114.4	22.1	0.0	60.6
Carcass EPDs				Leptin Testing				CE			
CWT	REA	Fat	Marb	Leptin	PMCH	IGF2	CRH4	CC	AT	CC	CG
EPD	25.7	0.83	-0.13	-0.31	CC	AT	CC	CG			
Breed Rank	50	35	45	100							

-A dark cherry red bull with piles of depth and dimension about him
-He's soft middled, bold and mature, and thick quartered
-Lots 56-59 are full brothers by blood as you will notice all 4 dams are full flush mates
-There is power in this cow family as the Lady Gold 131Y cow has produced many top sons through this sale including 1 bull going to Percyview Farms, 3 sons going to Pleasant Valley Colony, and one son being our lead off and high seller for \$35,000 to Lawnview Simmentals



Lot
57

IPU 403P RED LOTTO 198A
SIRE: WFL BLINDLINE 28D
WFL SWEET LICIOUS 1044X
LRX THE GODFATHER 141Z
DAM: MADER LADY FEVER 17C
MADER LADY GOLD 131Y



LRX Godfather 141Z



Brother to the dam of Lot 57

MADER UPRISING 28F

11 January 2018 • MDR 28F • PG1249524

Homo Polled

EPDs												
BW	205 Wt.	365 Wt.	ADG	WPDA	CE	BW	WW	YW	Milk	MCE	MWW	
84	904	1467	3.52	3.98	6.1	4.1	82.1	122.2	20.5	2.6	61.6	
Carcass EPDs					Leptin Testing					CE		
EPD	CWT	REA	Fat	Marb	Leptin	PMCH	IGF2	CRH4	CC	AA	CC	CG
Breed Rank	25.7	0.83	-0.13	-0.31	CC	AA	CC	CG				
	50	35	45	100								

-One of the bigger framed and performing bulls in the red pen this year
-He is blood red in color, has a ton of rib shape and middle third, and a big foot underneath him
-His dam is quickly becoming a favorite with her great udder suspension, great skeleton, and ability to milk heavy and wean some of the biggest calves

Lot 58

IPU 403P RED LOTTO 198A

SIRE: WFL BLINDLINE 28D

WFL SWEET LICIOUS 1044X

LRX THE GODFATHER 141Z

DAM: MADER FAT AMY 34C

MADER LADY GOLD 131Y



Mader Fat Amy 34C



Maternal Sister of Lot 58

MADER STRATEGY 41F

13 January 2018 • MDR 41F • PG1249528

Homo Polled

EPDs											
BW	205 Wt.	365 Wt.	ADG	WPDA	CE	BW	WW	YW	Milk	MCE	MWW
89	800	1363	3.52	3.66	5.2	4.9	78.0	116.1	20.9	2.0	59.9
Carcass EPDs					Leptin Testing				CE		
	CWT	REA	Fat	Marb	Leptin	PMCH	IGF2	CRH4	☆☆		
EPD	25.7	0.83	-0.13	-0.31	CC	AA	CC	CG			
Breed	50	35	45	100							

-This guy stems from a \$12,000 dam that sold at Friday Night Lights
 -She is as big middle as you can make them, and milks heavy
 -Strategy is long spined, has a great haircoat, and loads up muscle expression
 -The Lady Gold 131Y is well known for raising calves with extra performance, and these 4 full sibling daughters are doing the same thing as you can tell in their sons

Lot 59

IPU 403P RED LOTTO 198A

SIRE: WFL BLINDLINE 28D

WFL SWEET LICIOUS 1044X

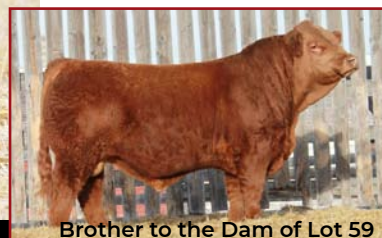
LRX THE GODFATHER 141Z

DAM: MADER FAT TAMMY 13C

MADER LADY GOLD 131Y



Mader Fat Tammy 13C



Brother to the Dam of Lot 59

MADER REVIVAL 63F

16 January 2018 • MDR 63F • PG1249534

Homo Polled

EPDs											
BW	205 Wt.	365 Wt.	ADG	WPDA	CE	BW	WW	YW	Milk	MCE	MWW
84	789	1261	2.95	3.42	6.1	4.1	73.5	109.6	22.3	2.8	59.1
Carcass EPDs					Leptin Testing				CE		
EPD	CWT	REA	Fat	Marb	Leptin	PMCH	IGF2	CRH4	☆☆		
Breed	25.7	0.83	-0.13	-0.31	CC	AA	CC	CG			
	50	35	45	100							

-The more moderate framed brother of the four, but is soft in his design, has ample width of top and muscle, and has that deep red color to him
 -His dam is really easy on the eyes, always carrying a great body score no matter what the conditions, and creating progeny that follow in her easy fleshing footsteps
 -Modest birthweight of 84 lbs, smooth build, I think this bull could really work well on some first or second calvers

Lot 60

IPU 403P RED LOTTO 198A

SIRE: WFL BLINDLINE 28D

WFL SWEET LICIOUS 1044X

MADER DICTATOR 27Z

DAM: MADER ADDICTION 200B

MADER HELENA 47Z



Maternal Brother of Lot 60



Mader Dictator 27Z

MADER HOUSE OF CARDS 134F

2 February 2018 • MDR 134F • PG1249569

Homo Polled

EPDs												
BW	205 Wt.	365 Wt.	ADG	WPDA	CE	BW	WW	YW	Milk	MCE	MWW	
85	820	1334	3.21	3.66	4.6	4.1	71.2	103.2	25.0	3.8	60.6	
Carcass EPDs					Leptin Testing					CE		
	CWT	REA	Fat	Marb	Leptin	PMCH	IGF2	CRH4				
EPD	23.7	0.74	-0.13	-0.22	CT	AA	CT	CG				☆☆
Breed Rank	65	65	50	90								

-A favorite Blindline son with his extra body capacity, his boldness, and his structural correctness
 -His dam has become a true matron cow, with this just being her second calf, and last year's son selling to Habberfield Cattle Co
 -An early February bull with a nice spread between a low birthweight and a solid 820 lb Adj weaning weight
 -Maternally stacked when you combine Blindline's dam, Sweet Licious, with Dictator's dam, Opal 652S, and the Helena 47Z cow has produced some dandy's

Lot 61

IPU 403P RED LOTTO 198A

SIRE: WFL BLINDLINE 28D

WFL SWEET LICIOUS 1044X

MRL GAME CHANGER 12A

DAM: MADER SCANDALOUS 71C

MADER UNBROKEN 41Y



Lot 61



MRL Game Changer 12A

MADER PLATINUM 96F

22 January 2018 • MDR 96F • PG1249550

Homo Polled

EPDs												
BW	205 Wt.	365 Wt.	ADG	WPDA	CE	BW	WW	YW	Milk	MCE	MWW	
84	779	1277	3.11	3.45	6.1	3.1	64.6	98.4	27.1	6.3	59.4	
Carcass EPDs					Leptin Testing					CE		
	CWT	REA	Fat	Marb	Leptin	PMCH	IGF2	CRH4				
EPD	29.3	0.80	-0.13	-0.29	CC	AT	CC	CG				☆☆
Breed Rank	30	45	50	100								

-A solid put together red blaze face bull who is a descendant from multiple generations of baldie females on the bottom side of pedigree
 -Note that Platinum's grandam is the dam to lot 44, and that this cow family is very productive
 -His second calving dam has a picture perfect udder, very feminine in her make-up, and expected to follow her dam's footsteps
 -This guy is long made with lots of width over the top



Lot
62

IPU 403P RED LOTTO 198A
SIRE: WFL BLINDLINE 28D
WFL SWEET LICIOUS 1044X
TNT GUNNER N208
DAM: MADER P MODERATION 32W
TH RED LASS 11N



Maternal Brother of Lot 62



Maternal Sister of Lot 62

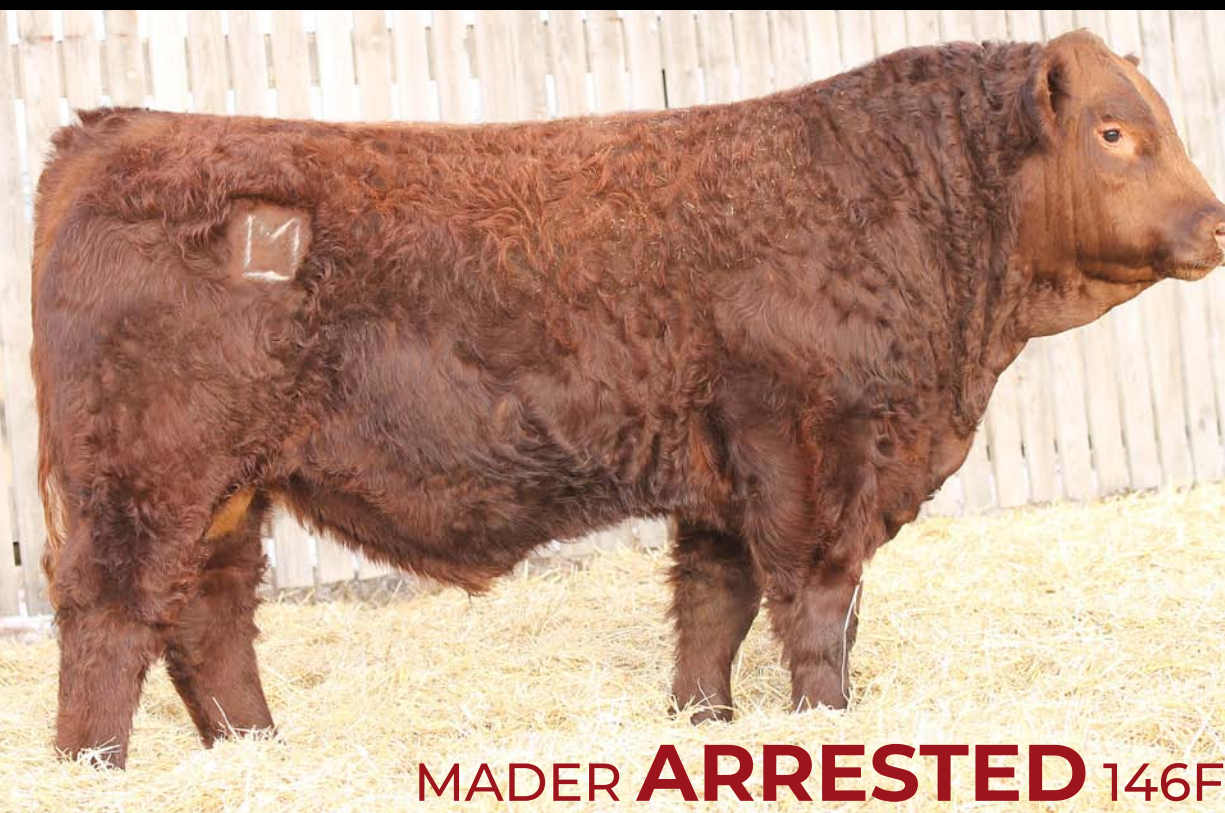
MADER **BIG PICTURE** 137F

2 February 2018 • MDR 137F • PG1249571

Homo Polled

EPDs											
BW	205 Wt.	365 Wt.	ADG	WPDA	CE	BW	WW	YW	Milk	MCE	MWW
92	904	1290	2.41	3.56	7.2	3.9	71.8	102.4	23.9	5.3	59.8
Carcass EPDs					Leptin Testing						
	CWT	REA	Fat	Marb	Leptin	PMCH	IGF2	CRH4	CE		
EPD	19.7	0.70	-0.12	-0.21	CT	AT	CC	CG	☆☆		
Breed Rank	85	80	65	90							

-You will like the dark cherry red colour to this herd bull, following the same colour of his dam and grandam
-The cow's last year's son sold to Hannah Simmentals, and the year before that her daughter sold at Agribition sale for \$10,500 to Diamond M Simmentals
-The grandam has been a very influential donor, producing many top sons for Stoneman Farms, and multiple sons for Bignell Cattle Co, with another full brother this year selling as lot 83
-This bull expresses a lot of natural rib shape, maturity, and thickness



Lot
63

IPU 403P RED LOTTO 198A
SIRE: WFL BLINDLINE 28D
WFL SWEET LICIOUS 1044X
WHEATLAND'S INFERNO 325N
DAM: CROSSROAD TWINKLE 594T
CROSSROAD ROSEMARY 394R



Maternal Brother of Lot 63



Maternal Brother of Lot 63

MADER **ARRESTED** 146F

7 February 2018 • MDR 146F • PG1249575

Homo Polled

EPDs											
BW	205 Wt.	365 Wt.	ADG	WPDA	CE	BW	WW	YW	Milk	MCE	MWW
85	810	1376	3.54	3.80	10.9	2.0	61.4	91.4	28.1	8.3	58.8
Carcass EPDs					Leptin Testing				CE		
	CWT	REA	Fat	Marb	Leptin	PMCH	IGF2	CRH4	☆☆		
EPD	22.8	0.69	-0.14	-0.22	CC	AA	CC	GG			
Breed	70	80	35	90							

-This is the natural calf coming off of the donor female, Twinkle 594T, also the dam to lots 45-48
-Dark red in colour, stacked with his dam's udder and foot quality, and long spined
-He is put together nicely with a smooth front end, a broad top, and a real nice foot under him
-Note he is just an early February born bull raised on an 11 year old cow, and will continue to grow and mature into a real valuable herd sire

Lot 64

IPU 403P RED LOTTO 198A

SIRE: WFL BLINDLINE 28D

WFL SWEET LICIOUS 1044X

COME AS U R RED ROCKET

DAM: RUST MISS 527C

HOOKS MIKA 141M



Come As U R Red Rocket



Brother to the dam of Lot 64

MADER BULLETPROOF 84F

20 January 2018 • MDR 84F • PG1249544

Homo Polled

EPDs											
BW	205 Wt.	365 Wt.	ADG	WPDA	CE	BW	WW	YW	Milk	MCE	MWW
98	897	1395	3.11	3.81	4.2	5.7	83.0	120.3	24.8	3.2	66.3

Carcass EPDs					Leptin Testing				CE 		
CWT	REA	Fat	Marb	Leptin	PMCH	IGF2	CRH4				
25.1	0.92	-0.14	-0.26	CT	AA	CT	CG				
Breed Rank	55	15	40	100							

-One of the longest made bulls in the pen, exemplifying one of his dam's great traits
 -This bull is very stout over that top and loin area, and carries a lot of muscle definition through that back third
 -Very good in his temperament, just about a 900 lb Adj weaning weight
 -Second calving dam is a big strong, Red Rocket daughter, Rockets admired for the extra growth and punch they pass down to their progeny

Lot 65

IPU 403P RED LOTTO 198A

SIRE: WFL BLINDLINE 28D

WFL SWEET LICIOUS 1044X

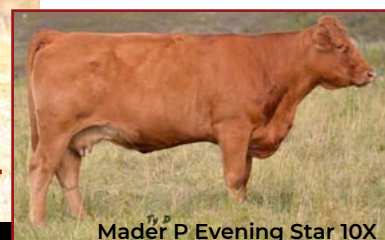
MADER PROTOCOL 46A

DAM: MADER COYOTE UGLY 74C

MADER P EVENING STAR 10X



Mader Protocol 46A



Mader P Evening Star 10X

MADER ROAD TRIP 153F

10 February 2018 • MDR 153F • PG1249578

Homo Polled

EPDs											
BW	205 Wt.	365 Wt.	ADG	WPDA	CE	BW	WW	YW	Milk	MCE	MWW
89	909	1352	2.77	3.66	7.0	4.1	74.9	107.7	26.4	5.0	63.9

EPD	Carcass EPDs				Leptin Testing				CE
	CWT	REA	Fat	Marb	Leptin	PMCH	IGF2	CRH4	
Breed Rank	22.6	0.75	-0.13	-0.24	CT	AT	CC	CG	★
	70	65	50	95					

-A middle of February bull with a 909 lb Adj weaning weight
 -These Blindline calves were of some of the biggest sire group at weaning time and should really carry that forward in their own offspring
 -Loose hided, soft sided, and stretch are some words that sum up this guy
 -Grandam has been very influential in always weaning off a calf of almost ½ to ¾ her bodyweight



MADER MAVERICK 27F

11 January 2018 • MDR 27F • PG1249523

Homo Polled

EPDs											
BW	205 Wt.	365 Wt.	ADG	WPDA	CE	BW	WW	YW	Milk	MCE	MWW
71	811	1336	3.28	3.55	4.7	3.8	78.4	120.5	18.2	0.3	57.4
Carcass EPDs					Leptin Testing				CE		
	CWT	REA	Fat	Marb	Leptin	PMCH	IGF2	CRH4			
EPD	30.2	0.81	-0.12	-0.16	TT	AT	CC	CC			
Breed	25	40	65	70							

-Two unique pedigreed full brothers by blood
 -Both stemming from two black parents combining great genetics such as Heavy Hitter, Godfather, and the Opal 6525 donor cow
 -These Opal daughters are so much like the old girl herself, as the teat size is perfect, the udder suspension is remarkable, and the foot quality is untouchable
 -Maverick has a nice red colour, is moderate and stout made, and carries that wide pin spread and muscle power that Heavy Hitter throws in every calf

Lot
66

MRL DISCOVERY 21A

SIRE: LFE HEAVY HITTER 352C

LFE BS JULI 641X

LRX THE GODFATHER 141Z

DAM: MADER OPAL 32C

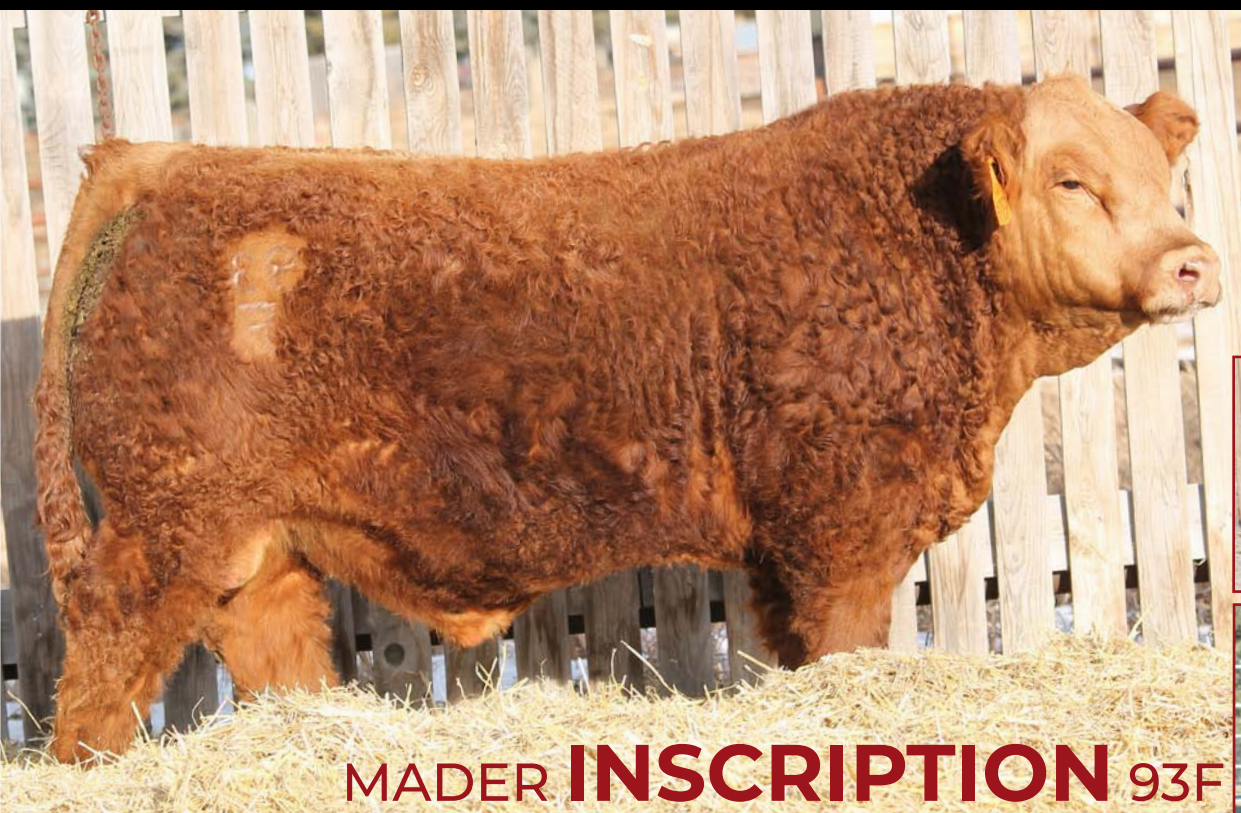
CG BLACK OPAL 652S



Sire of Lot 66 & 67



Brother to the dam of Lot 66



MADER INSCRIPTION 93F

22 January 2018 • MDR 93F • PG1249548

Homo Polled

EPDs											
BW	205 Wt.	365 Wt.	ADG	WPDA	CE	BW	WW	YW	Milk	MCE	MWW
82	756	1294	3.36	3.48	5.4	3.4	71.9	111.6	19.5	1.4	55.5
Carcass EPDs					Leptin Testing				CE		
CWT	REA	Fat	Marb	Leptin	PMCH	IGF2	CRH4				
EPD	30.2	0.81	-0.12	-0.16	CT	AT	CT	CC	☆☆		
Breed Rank	25	40	65	70							

-A loose hided, soggy made bull on a moderate frame
 -These Godfather cross Opal daughters are not big in stature, but are mighty in their production and milking ability
 -You will want to retain the daughters from these two brothers as they will add udder quality, foot quality, and add just sheer physical attributes we are targeting in the beef sector

Lot
67

MRL DISCOVERY 21A

SIRE: LFE HEAVY HITTER 352C

LFE BS JULI 641X

LRX THE GODFATHER 141Z

DAM: MADER OPAL 31C

CG BLACK OPAL 652S



Brother to the dam of Lot 67



CG Black Opal 652S



Lot
68

NCB COBRA 47Y

SIRE: MADER WALK THIS WAY 224B

MADER P IRON SUGAR 7X

MADER IM A GANGSTER 20B

DAM: MADER HOT DAMN 26D

IPU MS. HOT IRON 161Z



Paternal Brother of Lot 68



Mader Walk This Way

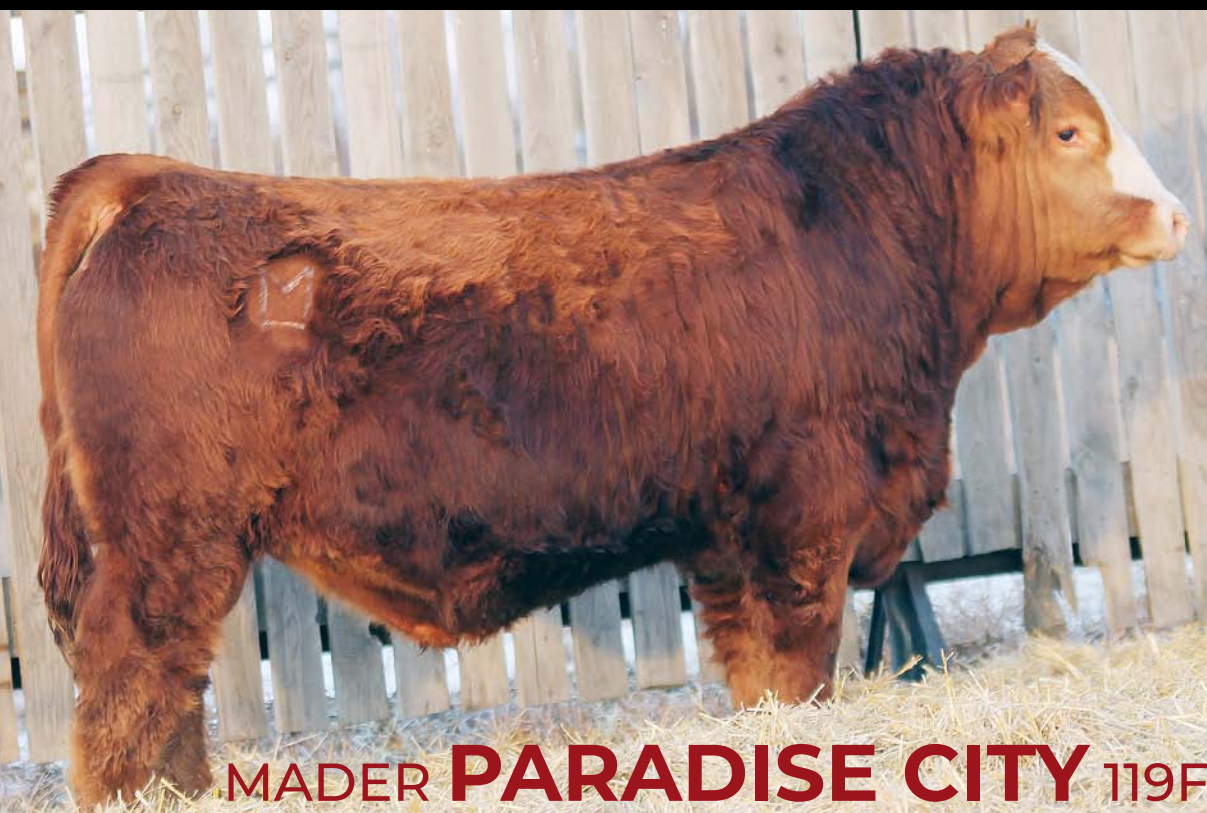
MADER JADED 6F

2 January 2018 • MDR 6F • PG1249516

Homo Polled

	EPDs									
	BW	205 Wt.	365 Wt.	ADG	WPDA	CE	BW	WW	YW	Milk
	82	861	1451	3.69	3.80	3.0	4.3	86.4	130.2	21.5
										-0.8
										64.7
	Carcass EPDs				Leptin Testing				CE	
	CWT	REA	Fat	Marb	Leptin	PMCH	IGF2	CRH4	CT	AT
EPD	30.3	0.79	-0.12	-0.29	CT	AT	CC	CC	☆☆	☆☆
Breed Rank	25	50	75	100						

- Here is a beef machine
- This bull is so massive in his body type, rugged in his design, and stout made
- He is royally bred when you analyze his pedigree with great Walk This Way sire on the top side combining with a Gangster daughter out of the Hot Iron 161Z donor female
- Walk this Way calved very well on heifers and they have the ability to really grow and mature quickly
- Look to this bull to really pass on his feed efficiency and enhanced growth ability



Lot
69

NCB COBRA 47Y

SIRE: MADER WALK THIS WAY 224B

MADER P IRON SUGAR 7X

LRX THE GODFATHER 141Z

DAM: MADER JACKPOT 9D

MADER P JACKPOT 59S



Mader P Jackpot 59S



LRX The Godfather 141Z

MADER PARADISE CITY 119F

29 January 2018 • MDR 119F • PG1249562

Homo Polled

	EPDs									
	BW	205 Wt.	365 Wt.	ADG	WPDA	CE	BW	WW	YW	Milk
	78	884	1356	2.96	3.59	9.3	2.2	80.6	124.3	23.4
										5.4
										63.7
	Carcass EPDs				Leptin Testing				CE	
	CWT	REA	Fat	Marb	Leptin	PMCH	IGF2	CRH4	TT	AT
EPD	25.1	0.66	-0.13	-0.24	TT	AT	CT	CG	☆☆☆	☆☆☆
Breed Rank	55	85	55	95						

- Stemming from a first calf heifer who goes back to one of the farm favourites, Jackpot 59S
- A female responsible for producing many top bulls and females that have been marketed in the top percentile for quality and dollars
- He has that nice money stripe down his face, is very athletic in his movement, and carries a lot of capacity
- This bull does have the tendency to hang to the back of the group as a bit shy, but with his quality and maternal strength, we feel he can really excel in the right operation and will calve easy

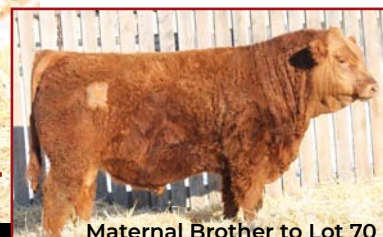


Lot
70

LRX THE GODFATHER 141Z
SIRE: MADER FREESTYLE 92B
MADER GOODLUCK CHARM 135
KOP CROSBY 137W
DAM: WHS MISS HANNAH 69B
LAZY BAR B LABEL 109U



Mader Freestyle 92B



Maternal Brother to Lot 70

MADER **BIG DADDY** 130F

1 February 2018 • MDR 130F • PG1249568

Homo Polled

	EPDs									
	BW	205 Wt.	365 Wt.	ADG	WPDA	CE	BW	WW	YW	Milk
	91	861	1269	2.55	3.49	6.4	4.7	73.1	112.2	23.1
									4.0	59.7
	Carcass EPDs				Leptin Testing				CE	
	CWT	REA	Fat	Marb	Leptin	PMCH	IGF2	CRH4		
EPD	24.4	0.68	-0.12	-0.24	CT	AA	CT	CG	☆☆	
Breed Rank	60	85	80	95						

-The Hannah 69B cow is among our favourite females to analyze, passing that down to her daughters we have retained
-This guy is extra long made, smooth throughout, and should really pass on a great haircoat and look to his progeny
-He has white star on his forehead and is dark red in colour
-Maternal Brother last year sold to Bignell Cattle Co.



Lot
71

LRX THE GODFATHER 141Z
SIRE: MADER FREESTYLE 92B
MADER GOODLUCK CHARM 135
R PLUS HARD ROCK 145X
DAM: MADER BLACKGOLD 3B
MADER P BLACKGOLD 110S



Mader Blackgold 110S



Paternal Brother of Lot 71

MADER **DARE DEVIL** 127F

31 January 2018 • MDR 127F • PG1249566

Homo Polled

	EPDs									
	BW	205 Wt.	365 Wt.	ADG	WPDA	CE	BW	WW	YW	Milk
	84	862	1323	2.88	3.64	6.2	3.9	72.9	114.5	20.2
									1.7	56.7
	Carcass EPDs				Leptin Testing				CE	
	CWT	REA	Fat	Marb	Leptin	PMCH	IGF2	CRH4		
EPD	26.3	0.70	-0.12	-0.22	CT	AA	CC	CC	☆☆	
Breed Rank	50	80	75	90						

-A smooth made son of Freestyle, who characterizes the same depth of rib, muscle shape, and large foot as his sire
-His dam is a daughter of our great Blackgold 110S donor cow, who is responsible for maybe as much \$\$\$ value in progeny as any other cow on the farm
-He is very moderate in his birthweight, and posts a great weaning weight of 862 lbs

Lot
72

KWA FLYF RED MOUNTAIN 16Z

SIRE: HARVIE RED SUMMIT 54B

HARVIE DAKOTA ROSE 11Z

LBCC BUCKSHOT 404B

DAM: LBCC DRAMA QUEEN 607D

GREYLEGGE RING OF FAITH



MADER LAST CALL 141F

4 February 2018 • MDR 141F • PG1251369

Homo Polled

		EPDs											
BW	205	365	ADG	WPDA	CE	BW	WW	YW	Milk	MCE	MWW		
94	849	1387	3.36	3.65	9.4	3.6	78.9	117.7	22.6	6.4	62.1		

-An early February bull that has the quality that your looking for
-He resembles in real life, exactly what he looks like in his picture
-He is a soft made, loose hided, soggy individual
-Summit is well known in the breed for his great calving ease
-His first calving dam, is the epidemy of what we are shooting for our young cows to look like, with her quality udder, big pin spread, and overall body capacity and condition

Carcass EPDs				Leptin Testing				CE	
CWT	REA	Fat	Marb	Leptin	PMCH	IGF2	CRH4	CT	AA
EPD	37.5	0.80	-0.12	-0.10	CT	AA	CC	CC	☆☆
Breed Rank	10	45	60	40					



Harvie Red Summit



LBCC Drama Queen 607D



Reference Sire

SHS ENTICER PIB

SIRE: HARVIE JDF WALLBANGER 111X

JDF PEPSI 61U

CG BLACK NUGGET 25N

DAM: CG BLACK OPAL 652S

CG BLACK OPAL 214 M



WALLBANGER



BLACK OPAL 652S

MADER DAMAGE CONTROL 206B

6 July 2014 • MDR 206B • BPTG1139924

Homo Polled, Hetero Black

		EPDs											
BW	205	365	ADG	WPDA	CE	BW	WW	YW	Milk	MCE	MWW		
83	731	1600	6.42	3.05	7.1	4.3	87.3	131.4	16.9	1.7	60.6		

- An awesome breeding bull that starts with low birthweights then has impressive YW EPD's
-Another son that we are very proud to have raised
-Damage Control, is pedigreed very strong being out of the well known Wallbanger sire, and our foundation black donor cow, Opal 652S

Carcass EPDs				Leptin Testing					
CWT	REA	Fat	Marb	Leptin	PMCH	IGF2	CRH4	CT	AT
EPD	48.3	0.76	-0.12	-0.24	CT	AT	-	-	-
Breed Rank	1	60	70	95					



Lot
73

HARVIE JDF WALLBANGER111X

SIRE: MADER DAMAGE CONTROL 206B

CG BLACK OPAL 652S

MCQUANTOCK 5148R(B ANGUS

DAM: 44U

26M (B ANGUS)



Brother to the Sire of Lot 73



Sister to the Sire of Lot 73

MADER ECLIPSE 174E

27 April 2017 • MDR 174E • BPRS1241941 • 1/2 Sim Angus

Tests Pending

EPDs											
BW	205 Wt.	Jan 1 Wt.	ADG	WPDA	CE	BW	WW	YW	Milk	MCE	MWW
86	729	1720	3.45	2.76	8.2	2.9	75.2	112.0	19.1	3.2	56.7
Carcass EPDs					Leptin Testing				CE		
	CWT	REA	Fat	Marb	Leptin	PMCH	IGF2	CRH4			
EPD	36.8	0.69	-0.10	-0.09							
Breed	10	80	95	35							

-Here is an extra age 1/2 blood SimAngus bull that will cover another 10 cows for a guy and utilize his maturity to be more aggressive of a breeder off the get go
-Very smooth made through his shoulder and hip shape, tells me that this guy could be utilized on heifers or young stock if desired and calve easy
-The sire Damage Control, is pedigreed very strong being out of the well known Wallbanger sire, and our foundation black donor cow, Opal 652S



Lot
74

HARVIE JDF WALLBANGER111X

SIRE: MADER DAMAGE CONTROL 206B

CG BLACK OPAL 652S

MCQUANTOCK 5148R (B ANGUS

DAM: 62U

16N(SIMMENTAL)



Lot 74



Maternal Brother of Lot 74

MADER AFFIRMED 173E

13 April 2017 • MDR 173E • BPRS1241939 • 3/4 Sim Angus

Tests Pending

EPDs											
BW	205 Wt.	Jan 1 Wt.	ADG	WPDA	CE	BW	WW	YW	Milk	MCE	MWW
86	725	1780	4.75	2.83	8.2	2.9	75.2	112.0	19.1	3.2	56.7
Carcass EPDs					Leptin Testing				CE 		
	CWT	REA	Fat	Marb	Leptin	PMCH	IGF2	CRH4			
EPD	36.8	0.69	-0.10	-0.09							
Breed Rank	10	80	95	35							

-A big powerful, growthy, blaze face, 3/4 blood bull who will add performance
-He is a coarser boned bull and has the maturity and frame score to work well on any size of cow his first breeding season
-His maternal brother was a real sale feature two years back selling to Sunshine Colony
-The dam is a strong bodied, capacious cow with a sound udder and feet



MADER HARD BARGAIN 171E

12 April 2017 • MDR 171E • PRS1241935 • 1/2 Sim Angus

Tests Pending

BW	205 Wt.	Jan 1 Wt.	ADG	WPDA	CE	BW	WW	YW	Milk	MCE	MWW
88	701	1885	4.50	3.00	8.2	2.9	75.2	112.0	19.1	3.2	56.7

EPD	Carcass EPDs				Leptin Testing				CE
	CWT	REA	Fat	Marb	Leptin	PMCH	IGF2	CRH4	
36.8	0.69	-0.10	-0.09						☆☆
Breed Rank	10	80	95	35					

-This big stretchy 1/2 blood bull will add length and pounds to his offspring
 -He excels in his foot size, his athletic ability, and his muscle expression
 -I would be comfortable letting these April/May born bulls out with 25-35 cows
 -They will be a full two years old by the time many commercial cowboys are turning out bulls, and they will have the maturity to hold their condition well

Lot
75

HARVIE JDF WALLBANGER111X

SIRE: MADER DAMAGE CONTROL 206B

CG BLACK OPAL 652S

BLACK ANGUS

DAM: 38T

26M(B ANGUS)



Full Brother to Damage Control



Sister to the sire of Lot 75



MADER SILENCE 172E

22 January 2017 • MDR 172E • BPRS1241938 • 3/4 Sim Angus

Tests Pending

BW	205 Wt.	Jan 1 Wt.	ADG	WPDA	CE	BW	WW	YW	Milk	MCE	MWW
84	724	1800	4.62	2.86	8.2	2.9	75.2	112.0	19.1	3.2	56.7

EPD	Carcass EPDs				Leptin Testing				CE
	CWT	REA	Fat	Marb	Leptin	PMCH	IGF2	CRH4	
36.8	0.69	-0.10	-0.09						☆☆
Breed Rank	10	80	95	35					

-These next two paternal brothers are well put together bulls
 -They are very proportionate in their body type, show good length, frame, and depth of rib
 -A modest 84 lb birthweight on this guy, and a nice bone size and smooth shoulder
 -A maternal brother last year sold to John Kostecky in ND
 -This guy is a 3/4 blood SimAngus

Lot
76

HARVIE JDF WALLBANGER111X

SIRE: MADER DAMAGE CONTROL 206B

CG BLACK OPAL 652S

MCQUANTOCK 5148R(B ANGUS)

DAM: 26Y

11S(SIMMENTAL)



Maternal Brother of Lot 76



Brother of the sire of Lot 76



Lot 77

HARVIE JDF WALLBANGER111X

SIRE: MADER DAMAGE CONTROL 206B
CG BLACK OPAL 652S

ANGUS

DAM: 19A

ANGUS



Paternal Brother of Lot 77



Brother of the sire of Lot 77

MADER DEMO DERBY 170E

12 April 2017 • MDR 170E • PRS1241932 • 1/2 Sim Angus

Tests Pending

EPDs											
BW	205 Wt.	Jan 1 Wt.	ADG	WPDA	CE	BW	WW	YW	Milk	MCE	MWW
82	716	1730	4.19	2.75	8.2	2.9	75.2	112.0	19.1	3.2	56.7
Carcass EPDs				Leptin Testing				CE			
CWT	REA	Fat	Marb	Leptin	PMCH	IGF2	CRH4				
EPD	36.8	0.69	-0.10	-0.09							
Breed Rank	10	80	95	35							

-Derby is a 1/2 blood SimAngus bull that is very balanced, free moving, and nice in his skeletal
-He is admired by many in the pen for his good nature, his overall power and smoothness, and his ability to travel
-The influence of Wallbanger and Opal 652S in these bull's pedigree, should be very influential maternally, as Opal decedents inherit her great udder and foot quality
-This guy will be easy to find sale day



Lot 78

MRL DISCOVERY 21A

SIRE: LFE HEAVY HITTER 352C
LFE BS JULI 641X

R PLUS BLACKOUT

DAM: TRI-R MS BLACK TESLA 21Y
TRI-R TESLA 36T



Maternal Sister of Lot 78



LFE Heavy Hitter

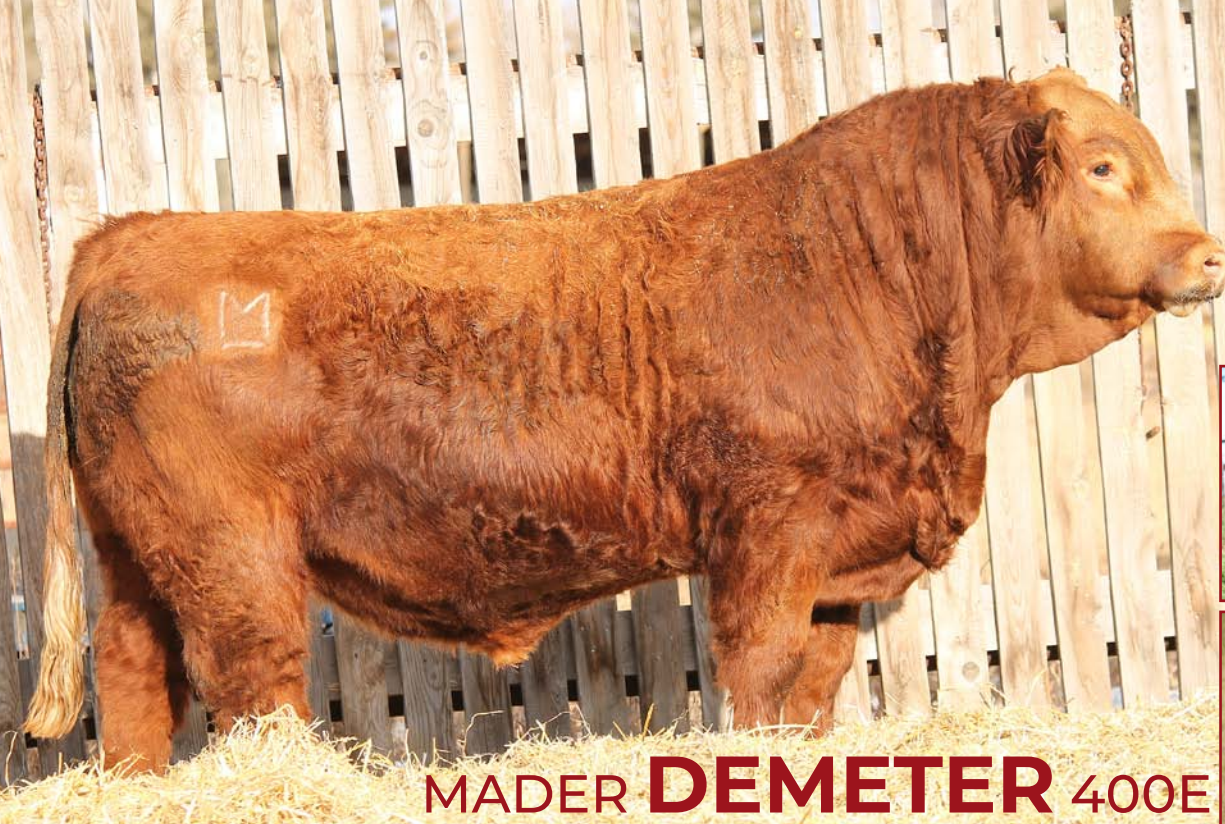
MADER ONE WAY 406E

14 June 2017 • MDR 406E • BPG1242134

Tests Pending

EPDs											
BW	205 Wt.	Jan 1 Wt.	ADG	WPDA	CE	BW	WW	YW	Milk	MCE	MWW
88	776	1725	4.50	3.04	4.0	3.9	74.8	117.6	20.7	2.7	58.1
Carcass EPDs				Leptin Testing				CE			
CWT	REA	Fat	Marb	Leptin	PMCH	IGF2	CRH4				
EPD	30.5	0.67	-0.13	-0.11							
Breed Rank	25	85	50	45							

-This would be the big stout power bull of the long yearlings
-A striking blaze face, huge topped, and thick quarter, are just a few of his features
-His dam is a real attractive female with a good functional udder and feet, and a lot of volume
-As noted from the yearling sector, these Heavy Hitter calves have a pile of natural spring and depth of rib to them



MADER DEMETER 400E

9 June 2017 • MDR 400E • PG1242130

Tests Pending

EPDs											
BW	205 Wt.	Jan 1 Wt.	ADG	WPDA	CE	BW	WW	YW	Milk	MCE	MWW
82	725	1525	4.32	2.68	7.2	2.9	71.0	107.7	19.2	1.2	54.7

Carcass EPDs

Leptin Testing

CE



EPD	25.3	0.72	-0.12	-0.12
Breed Rank	55	70	80	50

-Two full brothers here next that pattern very much alike
 -Demeter carries a lot of lower quarter, is wide topped, and very good on his feet and legs
 -Sired by our \$33,000 Trojan herd sire, leaves these bulls with low birthweights, small heads, and the calving ease advantage
 -Not huge in stature, but these brothers will cover more ground and hold their shape well due to their age

Lot
79

MUIRHEADS LIGHTS OUT 4Y

SIRE: WFL TROJAN 63C

WFL MS HINSDALE 1009X

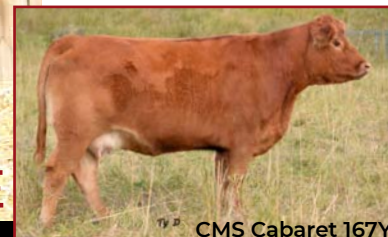
LRX THE GODFATHER 141Z

DAM: MADER CABERET 74B

CMS CABERET 167Y



WFL Trojan 63C



CMS Cabaret 167Y



MADER ZUES 401E

9 June 2017 • MDR 401E • PG1242131

Tests Pending

EPDs											
BW	205 Wt.	Jan 1 Wt.	ADG	WPDA	CE	BW	WW	YW	Milk	MCE	MWW
78	714	1450	4.32	2.55	7.2	2.9	71.0	107.7	19.2	1.2	54.7

Carcass EPDs

Leptin Testing

CE



EPD	25.3	0.72	-0.12	-0.12
Breed Rank	55	70	80	50

-The dam to these bulls is a hard working, heavy milking, thick made female
 -Her fertility is excellent, breeding back early every year, and always raises the right style and kind for today's market place
 -This guy is also great footed and very structurally sound in his kind
 -Both brothers are very docile and will make great additions to any herd with their calving ease

Lot
80

MUIRHEADS LIGHTS OUT 4Y

SIRE: WFL TROJAN 63C

WFL MS HINSDALE 1009X

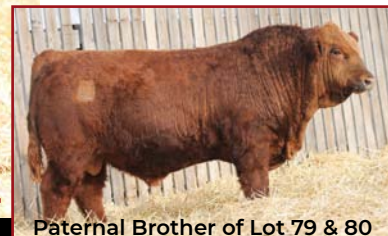
LRX THE GODFATHER 141Z

DAM: MADER CABERET 74B

CMS CABERET 167Y



Dam of Lot 79 & 80



Paternal Brother of Lot 79 & 80



MADER DAY BREAK 402E

10 June 2017 • MDR 402E • PG1242132

Tests Pending

EPDs											
BW	205 Wt.	Jan 1 Wt.	ADG	WPDA	CE	BW	WW	YW	Milk	MCE	MWW
85	739	1605	3.51	2.83	5.6	3.3	68.6	101.0	20.8	0.6	55.1
Carcass EPDs					Leptin Testing				CE		
	CWT	REA	Fat	Marb	Leptin	PMCH	IGF2	CRH4			
EPD	24.3	0.71	-0.11	-0.09							
Breed	60	75	90	35							

- A bull that probably carries as much rib shape and middle to him as any bull in the pen
- He is heavy haired, with that dark red colour
- His dam always out produces herself, including a \$16,000 bred heifer selling as her last calf to KT Ranches

Lot
81

MUIRHEADS LIGHTS OUT 4Y

SIRE: WFL TROJAN 63C

WFL MS HINSDALE 1009X

JRM TALLADEGA KNIGHT 61T

DAM: MADER P POCAHONTAS 140W

IPU RED POCAHONTAS 111N



Mader Pocahontas 140W



Maternal Sister of Lot 81



MADER HOMETOWN 423E

3 July 2017 • MDR 423E • PG1242138

Tests Pending

EPDs											
BW	205 Wt.	Jan 1 Wt.	ADG	WPDA	CE	BW	WW	YW	Milk	MCE	MWW
80	795	1450	4.07	2.64	7.8	2.2	68.2	96.7	20.3	3.7	54.4
Carcass EPDs					Leptin Testing					CE	
CWT		REA	Fat	Marb	Leptin	PMCH	IGF2	CRH4			
EPD	25.9	0.84	-0.12	-0.08							
Breed Rank	50	35	75	30							

- Another Trojan son who will calve very easy and could be used on heifers
- Very smooth through that front third, small headed, a low 80 lb birthweight
- He is dark red, heavy haired, and stems from a very correct momma cow
- We admire his angularity and his muscle definition

Lot
82

MUIRHEADS LIGHTS OUT 4Y

SIRE: WFL TROJAN 63C

WFL MS HINSDALE 1009X

ANKONIAN COLOSSAL S064

DAM: HILLS QUEEN B

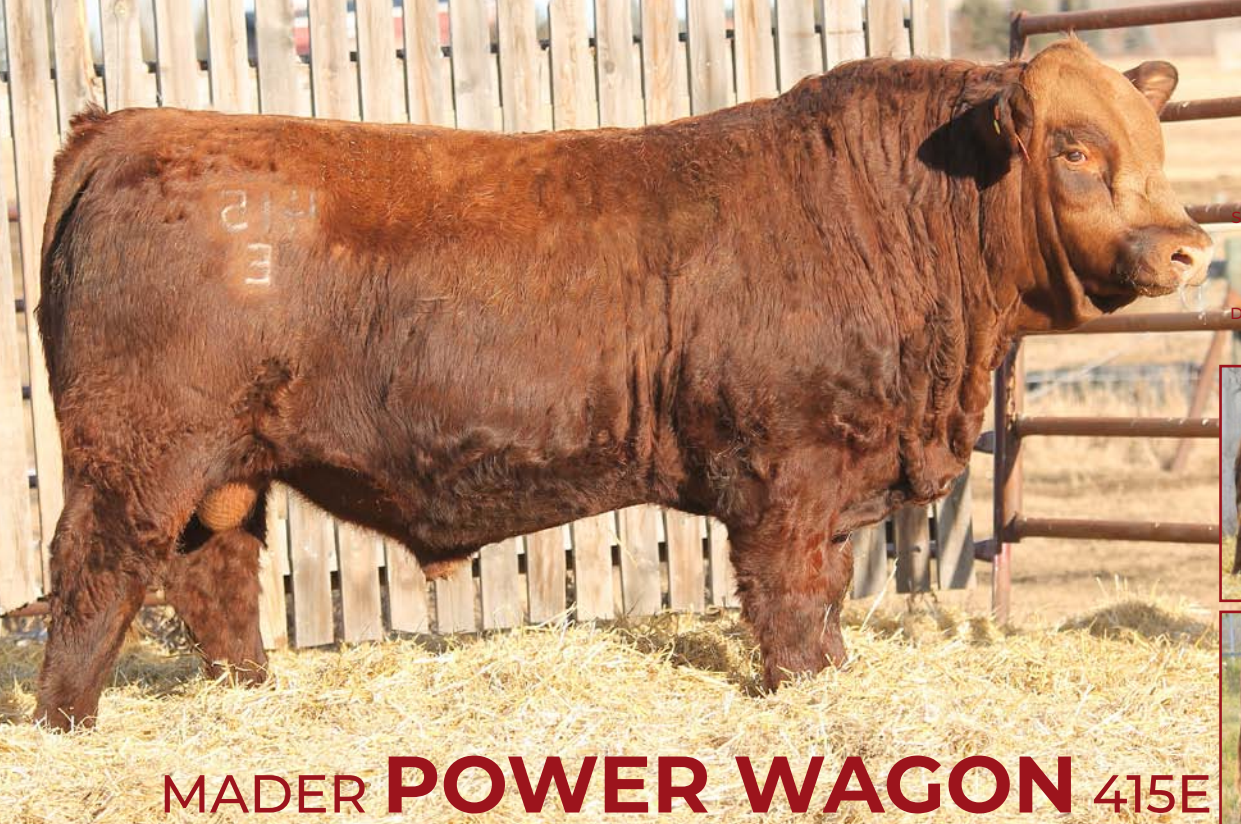
CONRAY WAHINE



Hills Queen B



Maternal Sister of Lot 82



MADER POWER WAGON 415E

23 June 2017 • MDR 415E • PT1236700

Homo Polled

EPDs											
BW	205 Wt.	Jan 1 Wt.	ADG	WPDA	CE	BW	WW	YW	Milk	MCE	MWW
89	774	1685	5.12	2.95	4.5	4.1	74.5	115.1	16.9	-1.2	54.2
Carcass EPDs					Leptin Testing				CE		
	CWT	REA	Fat	Marb	Leptin	PMCH	IGF2	CRH4			
EPD	35.9	0.78	-0.11	0.07							
Breed	10	50	85	5							

-Here is a full brother to 3 feature bulls we sold in the 2017 bull sale, one going to the Stoneman's for \$12,500, and the other two selling to our many time repeat customers, Bignell Cattle Co
 -The Super Duty calves have been standouts for their extra growth, size, and power
 -The Lass 11N cow has left her mark in our herd, with some top producing daughters that milk heavy and bring in the big calves
 -He is blood red in colour and has loads of lower rib mass, muscle and thickness

Lot
83

NCB RED SUSPECT 30S

SIRE: KUNTZ SUPER DUTY 4Y

MISS R PLUS 7037T

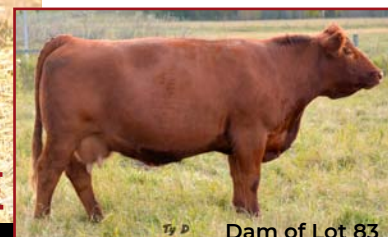
LRS RED REALITY 33J

DAM: TH RED LASS 11N

BSF MS INFORMER 19J



Sire of Lot 83



Dam of Lot 83



MADER OUTLAW 418E

25 June 2017 • MDR 418E • PTG1236701

Homo Polled

EPDs											
BW	205 Wt.	Jan 1 Wt.	ADG	WPDA	CE	BW	WW	YW	Milk	MCE	MWW
83	721	1400	3.76	2.55	13.8	-0.3	70.1	105.3	27.9	6.5	63.0
Carcass EPDs					Leptin Testing				CE		
	CWT	REA	Fat	Marb	Leptin	PMCH	IGF2	CRH4			
EPD	37.9	0.67	-0.11	0.02							
Breed	5	85	85	10							

-This would really be one of the best calving ease options of many of the red bulls offered throughout the catalogue
 -His sire, Kuntz Sherriff has been used on heifers in numerous herds across Canada, proving to be bomb proof
 -He also offers some great maternal genetics being out of our donor female, Lady Gold 131Y, a cow who is now responsible for having about 8 daughters retained in the herd, and many high selling bulls through this very ring
 -He is so smooth over his shoulder, has a very small skull, and is light boned, all while still maintains a nice easy fleshing body type and hair

Lot
84

KUNTZ MARSHALL 12Y

SIRE: KUNTZ SHERIFF 8A

PEACOCK'S LI'L NETTIE 23Y

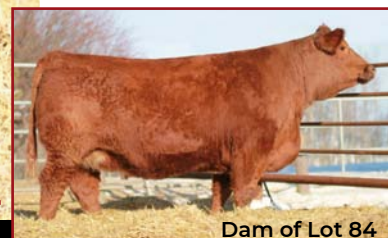
CDI/PLCC DR. PHIL 145U

DAM: MADER LADY GOLD 131Y

ERIXON LADY 202S



Sire of Lot 84



Dam of Lot 84

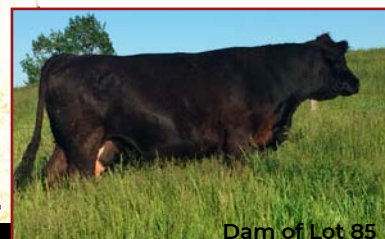


Lot
85

SPRINGCREEK ALL IN 155Y
SIRE: SPRINGCREEK OLYMPIAN 66A
SPRINGCREEK LINNE 33R
SSS-SCF CHUCKWAGON 008J
DAM: MADER P BLKSTAR 2R
ULTRA POWER MISSCOOPER55



Sire of Lot 85-87



Dam of Lot 85

MADER **HADES** 410E

21 June 2017 • MDR 410E • BPG1242135

Tests Pending

EPDs											
BW	205 Wt.	Jan 1 Wt.	ADG	WPDA	CE	BW	WW	YW	Milk	MCE	MWW
88	783	1635	3.45	2.97	4.8	5.1	75.4	102.6	23.3	3.2	61.0
Carcass EPDs					Leptin Testing				CE		
	CWT	REA	Fat	Marb	Leptin	PMCH	IGF2	CRH4			
EPD	24.3	0.67	-0.13	-0.11							
Breed	60	85	45	45							

-Here is a long made, deep side, athletic son of the Springcreek Olympian herd sire
-He gets his boldness and mass from his daddy, but he also maintains his dam's great structure and agility
-The 2R female comes up numerous times throughout the cowherd as she has been very influential in our retaining of heifers, and every calf she has ever had, has been a registered saleable calf
-Last year's son sold to Kerry Molzan for \$6500



Lot
86

SPRINGCREEK ALL IN 155Y
SIRE: SPRINGCREEK OLYMPIAN 66A
SPRINGCREEK LINNE 33R
WHEATLAND BULL 680S
DAM: MADER BLACKGOLD 82A
MADER P BLACKGOLD 110S



Dam of Lot 86



Maternal Grandsire of Lot 86

MADER **POSIDEN** 422E

3 July 2017 • MDR 422E • BPG1242137

Homo Polled

EPDs											
BW	205 Wt.	Jan 1 Wt.	ADG	WPDA	CE	BW	WW	YW	Milk	MCE	MWW
88	807	1625	3.58	2.95	2.7	6.1	79.8	116.4	20.8	-0.2	60.7
Carcass EPDs					Leptin Testing				CE		
	CWT	REA	Fat	Marb	Leptin	PMCH	IGF2	CRH4			
EPD	32.1	0.87	-0.11	-0.15							
Breed Rank	20	25	90	65							

-A big middled bull here with lots of hair and growth
-His dam is a daughter of our legendary Blackgold 110S donor female and the powerful Wheatland 680S
-He has the frame score to reach larger cows if need be, and will cover more numbers to reduce your need for more bulls

Lot
87

SPRINGCREEK ALL IN 155Y

SIRE: SPRINGCREEK OLYMPIAN 66A

SPRINGCREEK LINNE 33R

MADER FULL MONEY 145X

DAM: JNB BLACK APHRODITE 13A

JENS BLACK TREASURE 21T



Dam of Lot 87



Mader Full Money 145X

MADER DENVER 432E

5 August 2017 • MDR 432E • BPG1242141

Tests Pending

										EPDs						
BW	205 Wt.	Jan 1 Wt.	ADG	WPDA	CE	BW	WW	YW	Milk	MCE	MWW					
82	795	1420	3.70	2.77	5.0	5.3	78.0	106.7	18.6	2.6	57.6					
Carcass EPDs					Leptin Testing								CE			
CWT		REA	Fat	Marb	Leptin	PMCH	IGF2	CRH4						☆☆		
EPD	28.6	0.90	-0.13	-0.18												
Breed Rank	35	20	40	80												

-Really a balanced made, moderate framed, beefy type of bull here
-He travels very well, and is correct in his make-up
-His dam is a favourite, as she always looks good no matter the conditions, has a beautiful udder, great feet, and very feminine through the front, and tanky through the middle third

Lot
88

NCB COBRA 47Y

SIRE: MADER WALK THIS WAY 224B

MADER P IRON SUGAR 7X

FBF1 COMBUSTIBLE

DAM: MADER SUGAR SUGAR 56C

MADER P IRON SUGAR 7X



Sire of Lot 88



Dam of Lot 88

MADER DEEP BLUE 405E

13 June 2017 • MDR 405E • BPG1242133

Homo Polled

						EPDs						
BW	205 Wt.	Jan 1 Wt.	ADG	WPDA		CE	BW	WW	YW	Milk	MCE	MWW
78	704	1500	3.88	2.64		9.1	2.9	78.9	121.8	22.0	6.1	61.5
						Carcass EPDs				Leptin Testing		
						CWT	REA	Fat	Marb	Leptin PMCH IGF2 CRH4		
EPD	26.5	0.86	-0.11	-0.30								
Breed Rank	45	25	90	100								
						CE			☆☆☆			

-A unique pedigreed bull here doubling up on the influence of the Iron Sugar 7X donor female
-Besides her great maternal attributes, notice the calving ease in the sires of his pedigree including Cobra and Combustible
-Low 78 lb birthweight, light boned, and smooth over that shoulder



Dr. Waylon Wise

1626 Railway Street
Box 288
Crossfield, AB
T0M 0S0



Office: (403)946-4567
Cell: (403)369-8823
Fax: (403)946-5529
drwwise@gmail.com



Office: 403-335-8042
Niall: 403-507-3432
Grant: 403-994-1662

Site 16 Box 18 RR1
Didsbury, AB
T0M 0W0

nrichmondrepairs@gmail.com
www.richmondequipment.ca

Masterfeeds On Your Farm *80 Years Strong*
Doug Roxburgh
Beef Nutrition Service and Sales Representative
(403) 896-5222
droxburgh@masterfeeds.com
At *80 Years* old,...We're not getting any smaller.

Brittany Long, Relationship Manager
Business & Agriculture

Office 403-337-7054 PO Box 1180
Mobile 403-875-1200 103 - 10th ave N
blong@atb.com Carstairs, AB
T0M 0N0

atb.com

ATB Business & Agriculture

Scott Dickson, CA
DIRECTOR
LIVESTOCK SERVICES

DIRECT 403.356.1250
PH. 403.346.8878
FAX 403.341.5599
TOLL FREE 1.877.500.0779

4922 - 53 St.
Red Deer, AB
T4N 2E9
scott.dickson@mnp.ca
mnp.ca



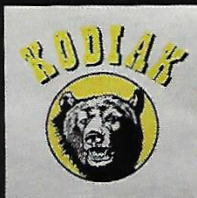
Member of Praxity, a150L
Global Alliance of Independent Firms



Kodiak BBQ Caterers Ltd

Tom Jackson 403-638-7321
Jess Nylund 403-598-1366
Deli 403-638-8068

kodiakbbq@gmail.com
www.kodiakbbq.com



Catering Special Events Large and Small

WE CAPTURE REAL EMOTION.

*Photographing moments in the present, so you
can re-visit this very special place in time again.*

Lifestyle Sessions and Weddings



CASSIE DORRAN | 403.507.5953
cassie@routeloutephotography.com
routeloutephotography.com



Co-operative Limited

P.O. Box 413
Carstairs, Alberta T0M 0N0
WWW.UFA.NET

JIM & DAPHNE WALROTH

Petroleum Agents
Roberts Fuel Supplies Ltd.

DIRECT (403) 337-3452
CELL (403) 510-9897
FAX (403) 337-3517
RES (403) 337-3582

Dale Schaeffer
President
dale@westernlitho.ca
Direct: 306.546.7430
Cell: 306.537.5664



Bus: 306.525.8796
or 1.877.475.4846
Fax: 306.565.2525
www.westernlitho.ca

300 Dewdney Avenue
Regina, SK S4N 0E8

Davis-Rairdan

P.O. Box 590
Crossfield, Alberta
Canada T0M 0S0
Phone (403)946-4551
Fax (403)946-5093

Website
davis-rairdan.com
email
embryos@davis-rairdan.com

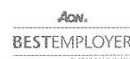


Clint Buckler
Relationship Manager
clint.buckler@fcc.ca
fcc.ca

Toll free:
1-800-387-3232

350-6900 46th Street
Olds AB T4H 0A2
T: 403-556-8177
F: 403-556-2490
C: 403-415-5479

Customer Service Centre:
1-888-332-3301



Canada

THANK YOU 2018 BUYERS



THANK YOU 2018 BUYERS

Anchor B Cattle Co.	Eckhard Kammrath	Melissa Duque	Sun Star Simmentals
Arley Bohrsen	Ferme Christel	McPherson Cattle Co.	City View Simmentals
B&D Simmentals	Foat Farms	NA Bar Land & Cattle	Velian Farms
Bar RK Simmental	Gerrad Wauters	Norbert Luken	Pearson Simmentals
Berry Creek Colony	Habberfield Cattle Co	Parkland Colony	Terry Kuiper
Bignell Cattle Co	Hannah Simmentals	Percyview Simmentals	Willowdale Simmentals
Bill & Cindy Sandilands	Indian River Cattle Co	Plain Lake Colony	Bar CI Livestock
Black River Simmentals	Jacobson Vet Services	Poole Farm	Twin Oak Livestock
Blushrose Simmental Farm	Jamin Severson	Pracker Ag LTD	Alistar Keller & Jen Impey
BS Ranch	Jeremy Liesemer	Prairie Sky Holdings	Kent Malcomson
Campstool Cattle Co	John Kostelecky	Rancier Farms	Coolibah
Carl Stacy	Jon Rairdan	Richard Steed	Davis Rairdan Embryos
Chessor Farms	Judy Lucas	Rob Tindal	Horner Cattle Co
Cory Campbell	Justin Johner	Rockport Colony	Boss Lake Genetics
Crisis Cattle Co	KCH Cattle Co	Sande Cattle Co.	Ruzicka Farms
Crocus Simmentals	Ken & Chris Bellamy	Stahlville Colony	W2 Land & Cattle
Darwin Casebeer	Kerry Molzan	Starland Colony	West Hill Ranch
David & Lisa Reinhardt	KT Ranches	Sunny Valley Simmentals	Chestermere Stock Farm
Dean Volk	Kevin Fletcher	Tracy Toney	Delichte Simmentals
Denny Golden	KFC Farms Ltd	Triple R Simmentals	Oakview Simmentals
Diane & Brian Campbell	Klaudt Ranches	Vaughn Gibbons	
Don Farquaharson	Lennox Farms Ltd	Walker Enterprises	
Doug Fletcher	Lorne Derkachenko	Willerton Simmentals	
Downhill Simmentals	Lyndon Creek Ranch	Wolf Creek Colony	
Dwayne Bushak	MacPherson Cattle Co	East Poplar Simmentals	
Dwayne Nicolay	Mayton Farms	Elite Cattle Co	

TERMS & CONDITIONS

TERMS: The terms of the sale are cash or cheque payable at par. Settlement to be made immediately after the completion of the sale. The right of property shall not pass until after settlement is made. All settlements must be made with the clerk of the sale before any cattle will be released. All monies are in Canadian funds.

BIDS: Every animal entering the sale ring will be sold to the highest bidder.

DISPUTES: In cases of disputes, bidding will be reopened between the parties involved. If no further bid is made, the buyer will be the person from whom the auctioneer accepted the last bid. The auctioneer's decision is final.

ANNOUNCEMENTS: All announcements made from the auction block will take precedence over the printed matter in the catalogue. Buyers are therefore cautioned to pay close attention to any such announcements.

INSURANCE: Will be available sale day. Animals become the property of the buyer as soon as sold. Bulls to be wintered must be insured.

SHIPPING: Assistance will be given in arranging trucking after the sale but no risk is assumed by the Auctioneer or Seller. Expenses incurred are the responsibility of the purchaser. Purchasers are requested to furnish shipping instructions when making settlement. If you need assistance please contact the seller.

CERTIFICATE OF REGISTRY: Registration or recordation papers will be transferred to the new owner if requested at time of payment. Cattle will not be transferred until paid for in full.

SEMEN RESERVE: The seller reserves the right to draw semen on any bull in the sale for in herd use only at the cost of the seller and prior to delivery.

ACCIDENTS: Although every precaution will be taken to protect the safety and comfort of buyers, neither the sale manager, nor the auctioneer assume any responsibility in this matter and disclaim any liability, legal or otherwise, in the event of accident or loss of property.

LIABILITIES: All persons attending the sale do so at their own risk and sellers assume no liability, legal, or otherwise, for any accidents occurring in or about the premises.

EXPORT TESTING: Required health certificates for cattle being exported will be provided.

BREEDING GUARANTEE: All animals are guaranteed to be satisfactory breeders in accordance with the respective breed association bylaws. No guarantee is given a bull's semen will freeze. Any female that is subject to embryo transplant shall cause this guarantee to be null and void. Guarantee does not apply to animals who after the sale are not properly handled and cared for, or injured or sick. They cannot be returned to us if not in a sound, healthy condition. At no time shall the seller's liability exceed the purchased price of the animal.

RIGHTS & OBLIGATIONS: The above terms & conditions of the sale shall constitute a contract between the buyer & seller & be equally binding to both. Resale of animals following purchase in this sale shall constitute a separate transaction & the rights & obligations of the two parties connected thereto are not covered by the terms & conditions of this sale. In the event of default on any part of the terms & conditions covering this sale by either the buyer or the seller, it shall be the responsibility of the buyer or the seller to investigate any action necessary to bring about a fair settlement of any claims arising from this sale and to be responsible for any & all costs involved therein.



Request Return To:
Box 1 Site 12 RR2
Carstairs, AB T0M 0N0



Time Sensitive Material



1-877-254-8755

cochrane.dodge.com

**SEE YOU AT
THE SALE!**

